

**A molecular phylogeny of the long-horned bees in the genus
Melissodes Latreille (Hymenoptera: Apidae: Eucerinae)**

Karen W. Wright^{a,b,*}, Kelly B. Miller^a and Hojun Song^b

^aDepartment of Biology, University of New Mexico, Albuquerque, NM, USA

^bDepartment of Entomology, Texas A&M University, College Station, TX, USA.

*Corresponding author, e-mail: kwright@tamu.edu

Supplementary material

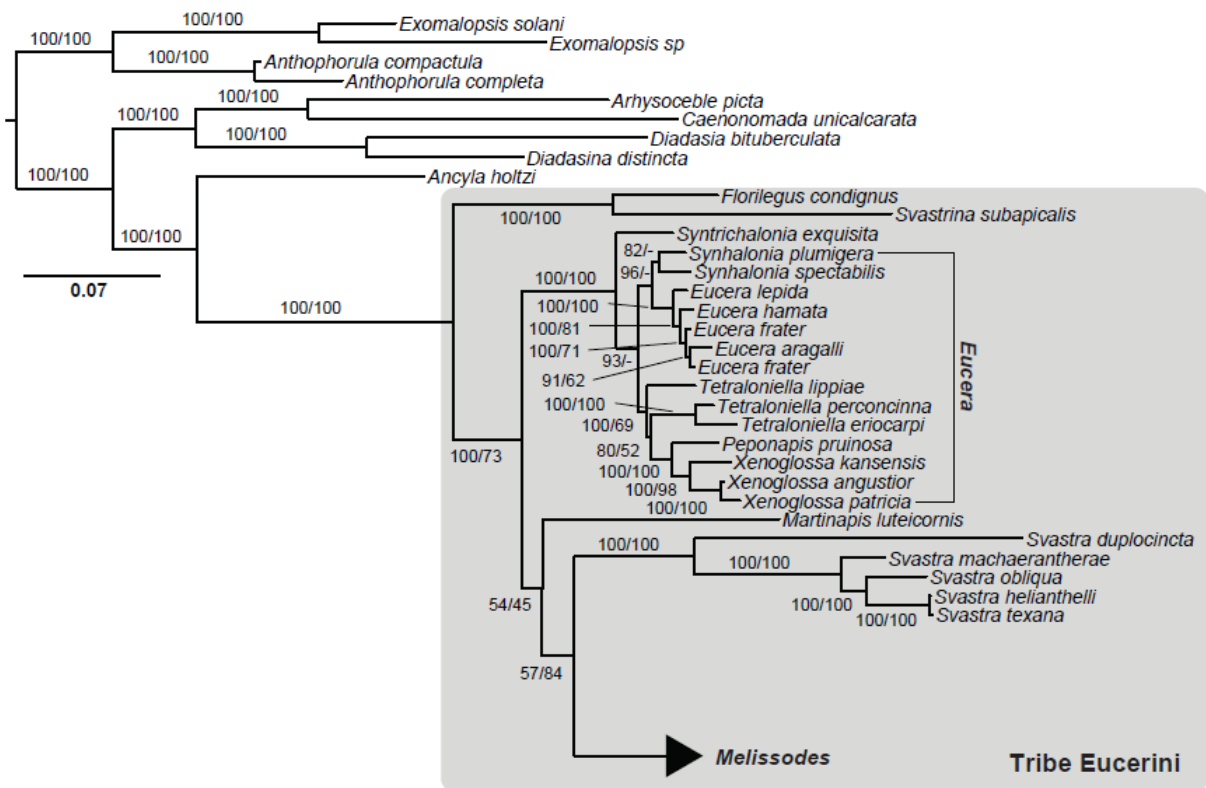


Fig. 1. Bayesian outgroups tree.

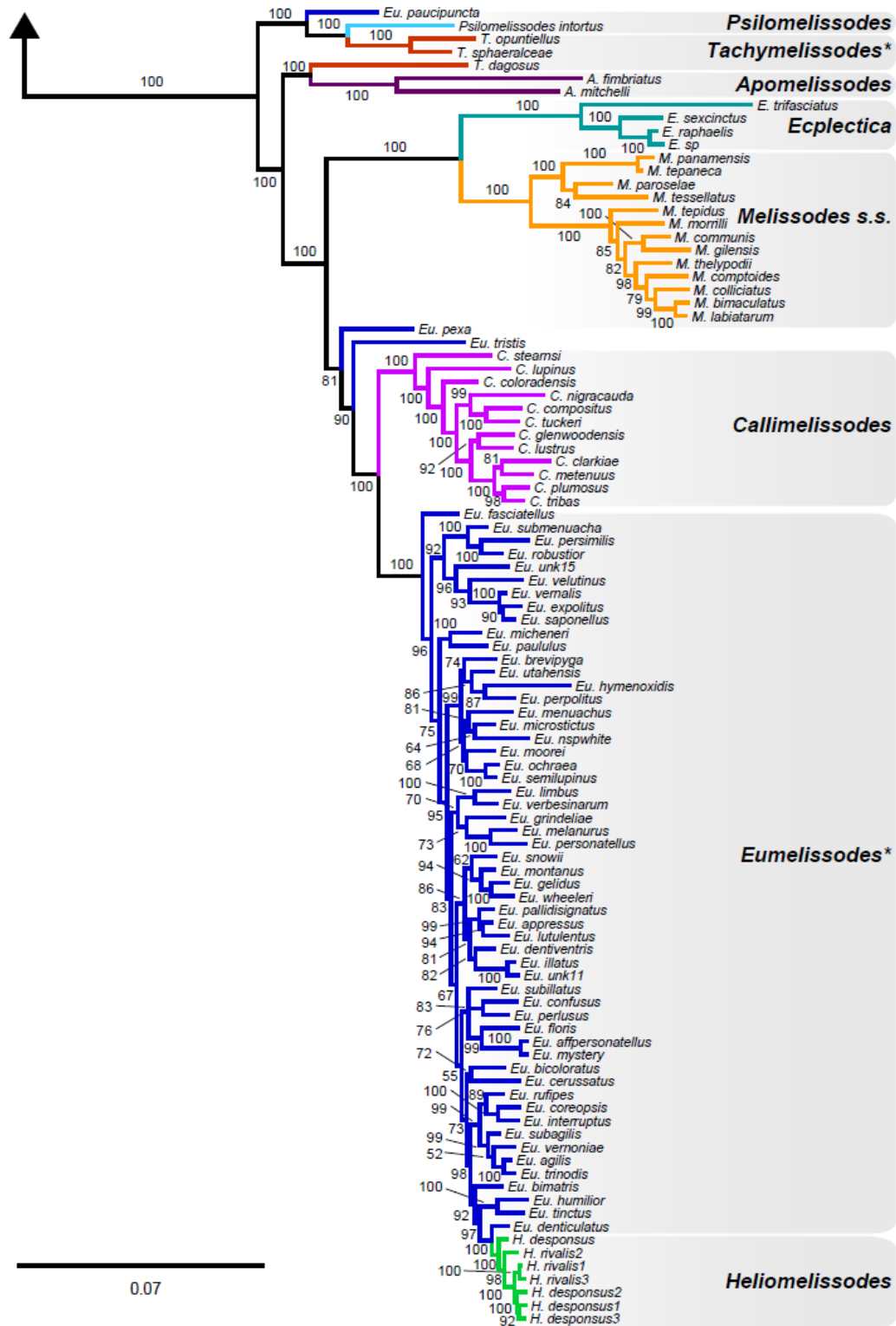


Fig. 2. Bayesian ingroup tree.