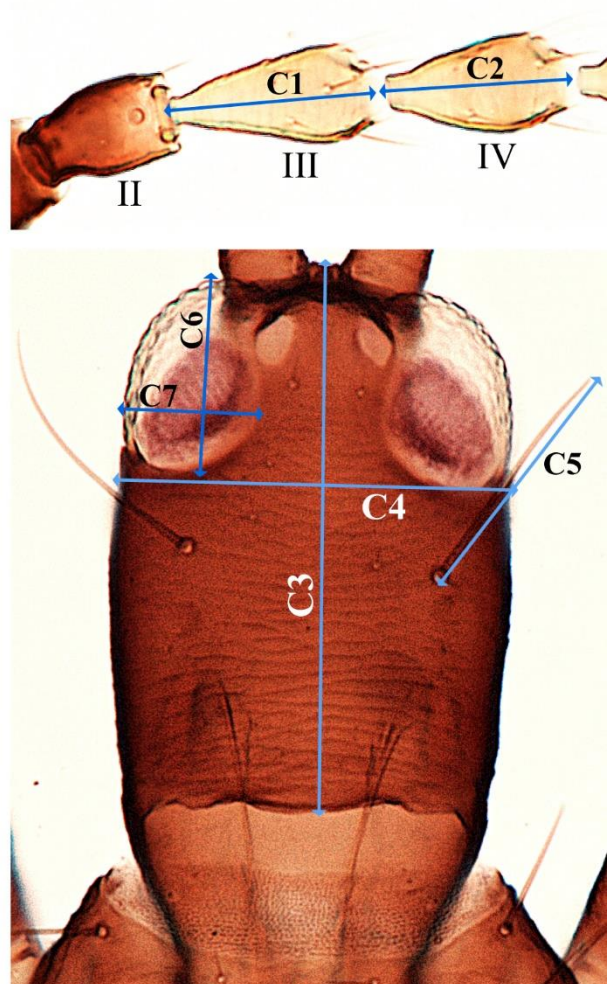
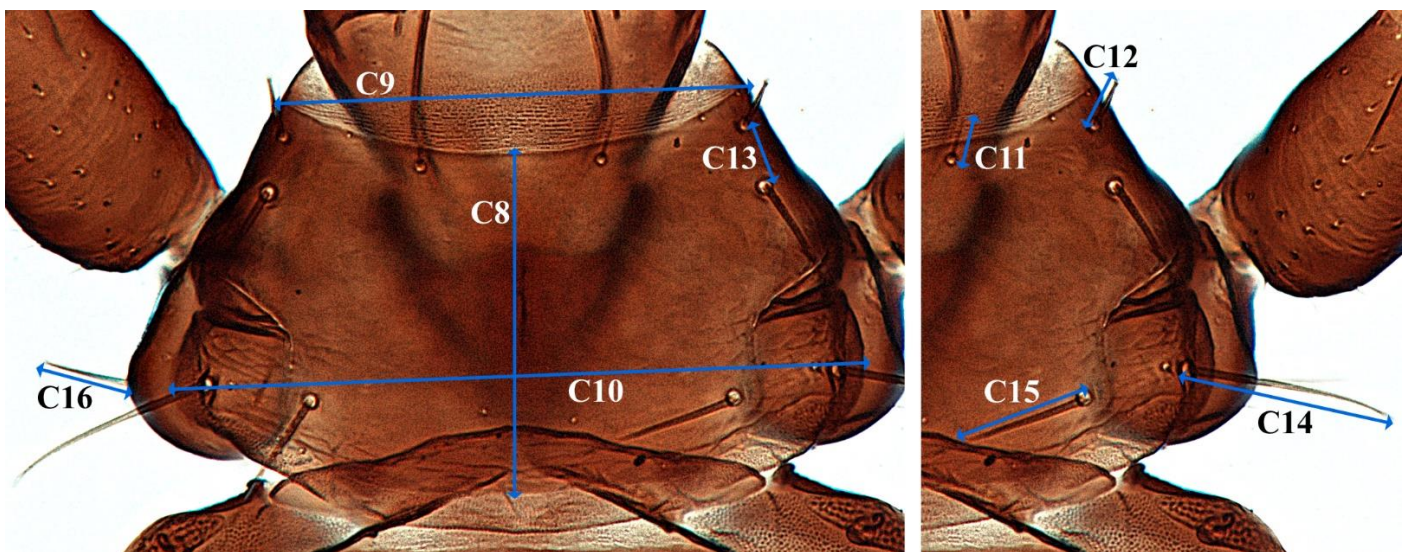


Continuous Characters (Matrices D1Con and D2Con)

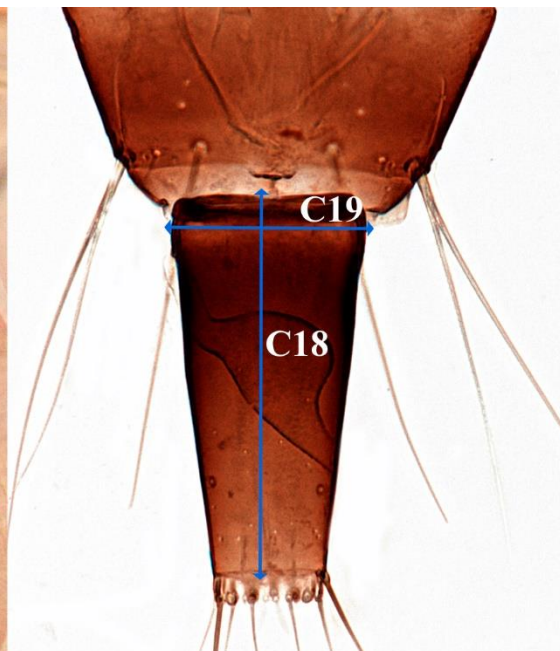
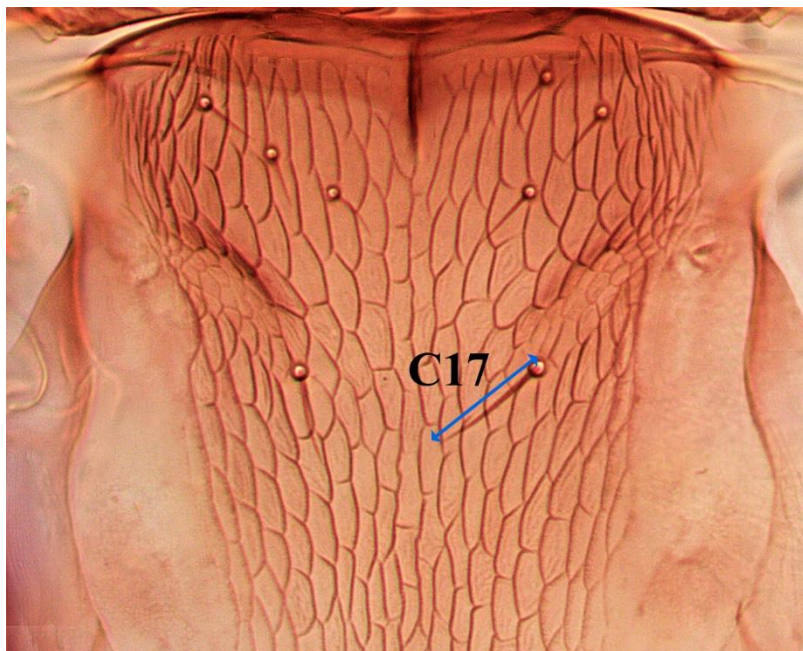
	Character:	Description
C0	Body, distended length:	Measured from tip of interantennal projection to tip of tube, not including the anal membranous ring.
C1	Antenna, segment III, length:	Measured from base of segment to apex, not including membranous area.
C2	Antenna, segment IV, length:	Measured from base of segment to apex, not including membranous area.
C3	Head, dorsal length:	Measured from tip of interantennal projection to posterior dorsal margin of head capsule. Projections or craspeda on the posterior margin were not included in this measure.
C4	Head, width behind eyes:	Measured right behind compound eyes, not including projections or tubercles that may occur on genae.
C5	Head, postocular setae, length:	The PO seta that is the least curved or inclined was measured, from its base to its apex, including expanded or capitate tips if present. Basal pore was not included in the measure.
C6	Head, compound eyes, dorsal length:	Measured from anterior margin of compound eye to the apex of the curved posterior margin.
C7	Head, compound eyes, dorsal width:	Measured near the posterior area of the eye, including any curves/invagination the eye might have towards the ocellar area.



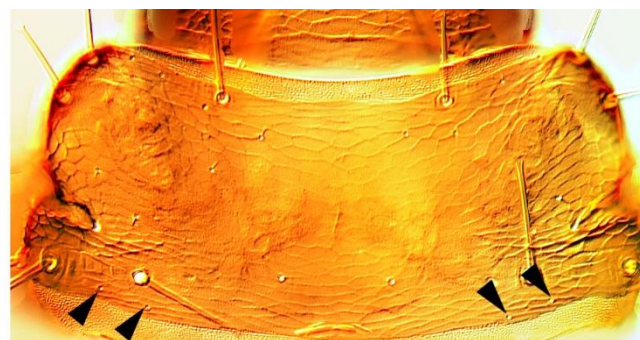
C8	Pronotum, median length:	Measured at the median line of pronotum, from the anterior margin to the posterior margin of the pronotal sclerite. Membranous areas were not included in the measure.
C9	Pronotum, apical width:	Measured from one anterior angle of pronotum to the other. Basal pores of setae or tubercles were not included.
C10	Pronotum, width across epimeral setae:	Measured at the level of epimeral setae, from the lateral margin of pronotum to the other, not including the basal pores of EP setae. The margins of fore coxae were not included.
C11	Pronotum, anteromarginal setae length:	The least curved or inclined am seta was measured, from its base to its apex, including expanded or capitate tips if present. Basal pore was not included in the measure.
C12	Pronotum, anteroangular setae length:	The least curved or inclined aa seta was measured, from its base to its apex, including expanded or capitate tips if present. Basal pore was not included in the measure.
C13	Pronotum, distance between basal pores of anteroangular and midlateral setae:	The shortest distance between the external margin of the basal pore of aa seta and the external margin of basal pore of ml seta, on the same side of pronotum, was measured.
C14	Pronotum, external epimeral setae length:	The least curved or inclined ep seta was measured, from its base to its apex, including expanded or capitate tips if present. Basal pore was not included in the measure. If two pairs of long epimeral setae are present, the most external pair was be measured.
C15	Pronotum, posteroangular setae length:	The least curved or inclined pa seta was measured, from its base to its apex, including expanded or capitate tips if present. Basal pore was not included in the measure.
C16	Pronotum, coxal setae length:	The least curved or inclined cx seta was measured, from its base to its apex, including expanded or capitate tips if present. Basal pore was not included in the measure.



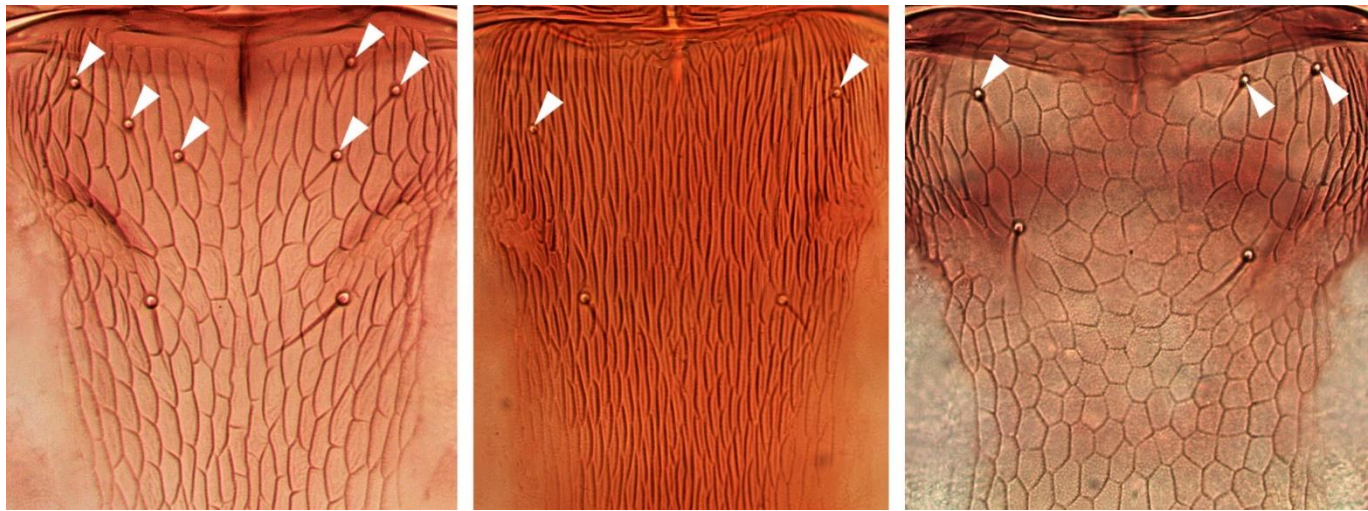
C17	Metanotum, major median setae length:	The least curved or inclined seta was measured, from its base to its apex, including expanded or capitate tips if present. Basal pore was not included in the measure.
C18	Abdomen, tube, dorsal length:	Measured from the basal margin to the apical margin of tube, not including the membranous anal area.
C19	Abdomen, tube, basal width:	Measured at the widest part of basal area.



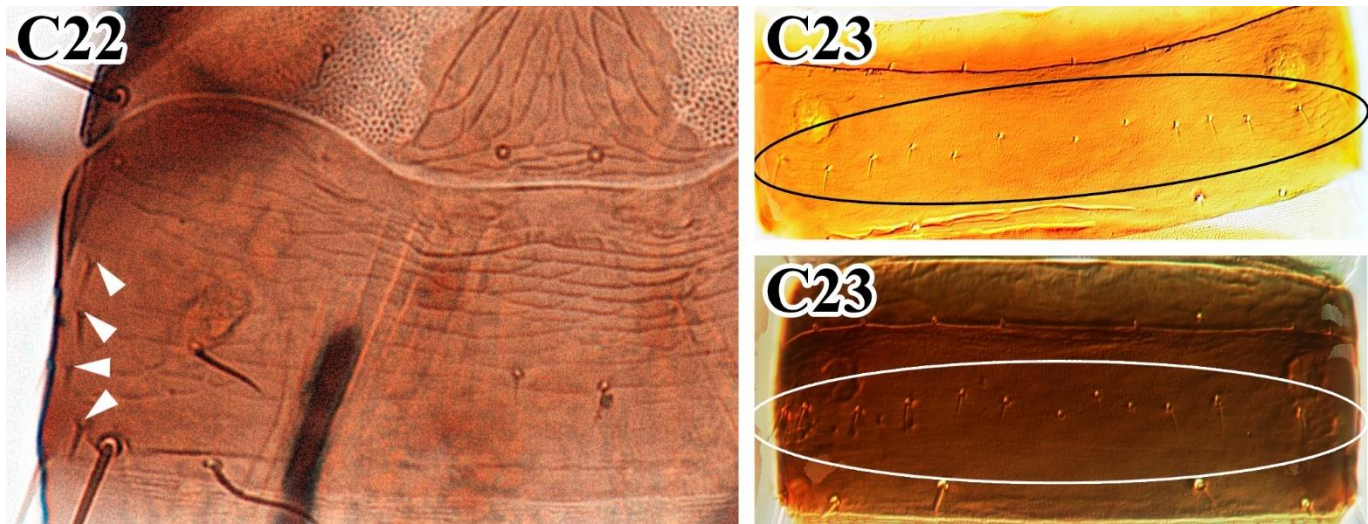
C20	Pronotum, minor posteromarginal setae, number:	All minor setae occurring at the posterior margin of pronotum, including epimeral area, were counted. Discal setae, the major epimeral, posteroangular or posteromedian setae were not considered here.
-----	--	---



C21	Metanotum, discal setae, number:	All setae between the anterior margin of metanotum and the major pair of median metanotal setae were counted individually, not paired. The three minute pairs of setae at the anterior angles of metanotum, and the major median setae, were not included in this counting.
-----	----------------------------------	---



C22	Tergite II, lateral setae, number:	All setae occurring between the lateral margin of tergite and the wing-retaining setae were considered, except those setae on the posterior margin of tergite or sinuous/curved setae.
C23	Sternite III, discal and lateral setae, number:	All setae occurring on discal area and laterally on the sternite were counted. Marginal setae were not included.



C24	Fore wings, duplicated cilia, number:	All duplicated cilia from the fore wing are counted. Both fore wings of the specimen were considered separately. This measure was considered as a range from the smallest amount of duplicated cilia observed to the largest amount observed.
-----	---------------------------------------	---



Discrete Characters

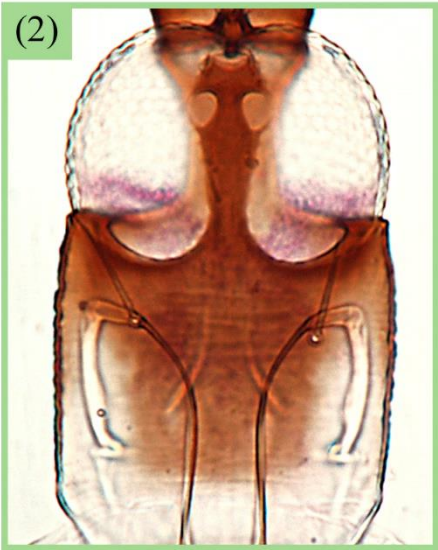
D1	D2	D1Con	D2Con	Character:
C0	C0	C25	C25	Head, colour: (0) light-coloured/yellow; (1) brown; (2) bicoloured.

Head, colour:

(0) light-coloured/yellow

(1) brown

(2) bicoloured



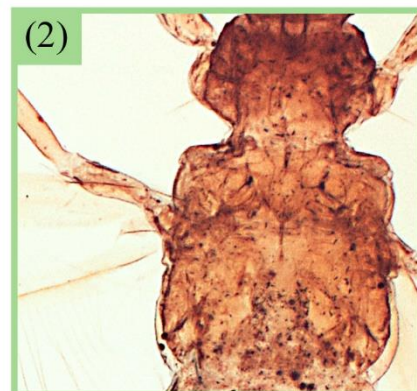
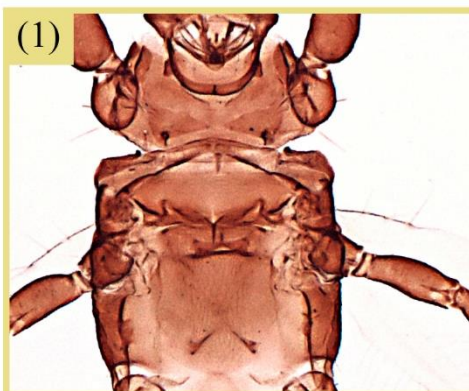
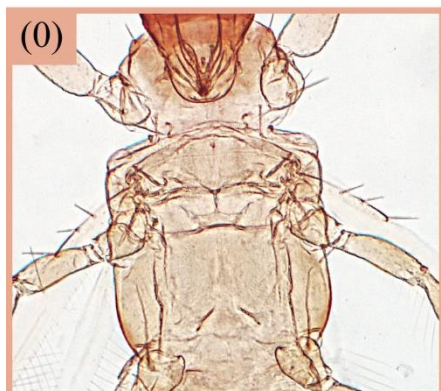
C1	C1	C26	C26	Thorax, colour: (0) light-coloured/yellow; (1) brown; (2) bicoloured.
----	----	-----	-----	---

Thorax, colour:

(0) light-coloured/yellow

(1) brown

(2) bicoloured

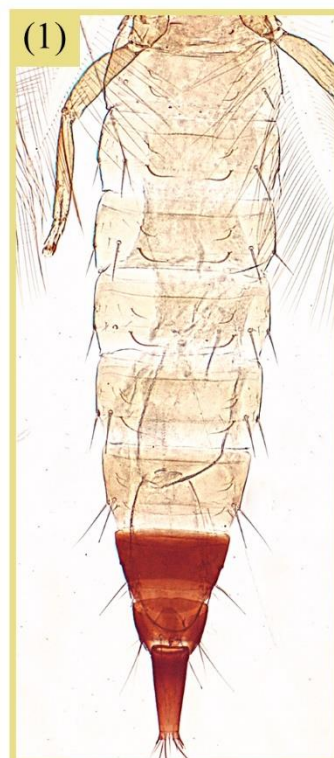
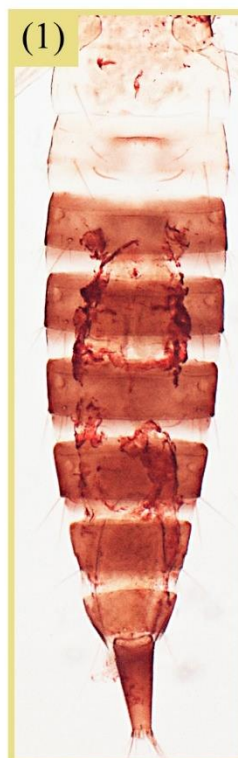
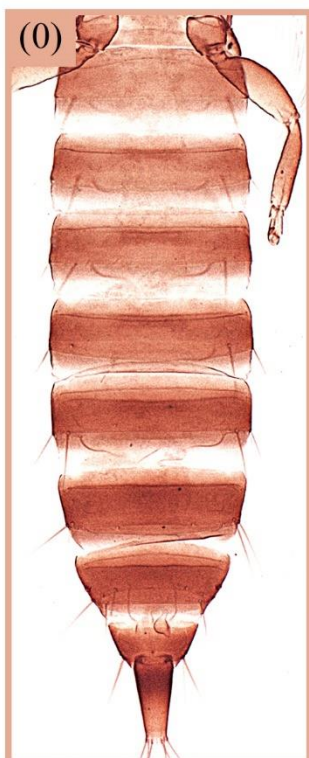
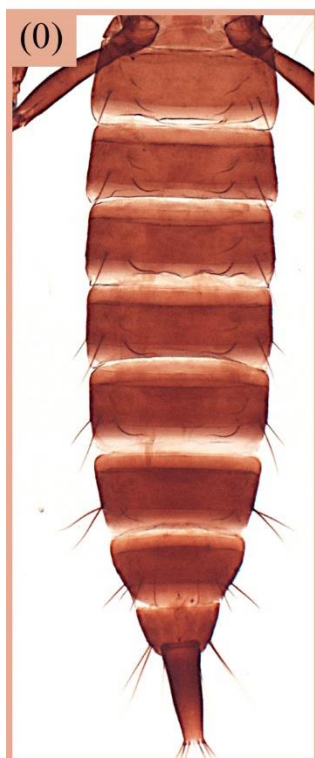


C2	C2	C27	C27	Abdomen, colour pattern: (0) uniform; (1) bicoloured.
----	----	-----	-----	---

Abdomen, colour pattern:

(0) uniform

(1) bicoloured



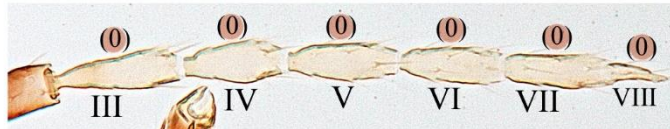
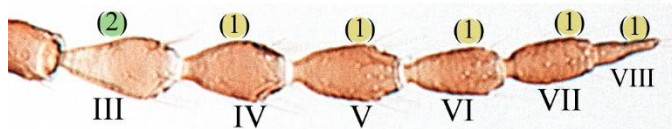
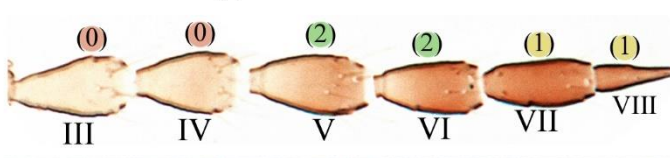
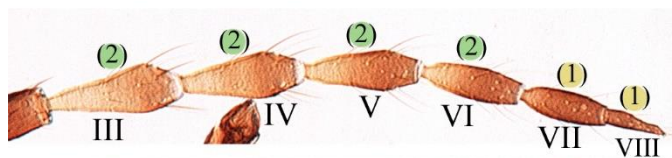
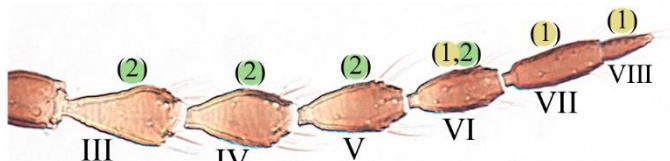
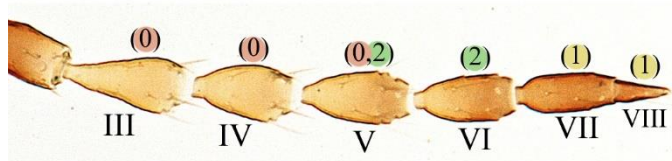
C3	C3	C28	C28	Antenna, antennomere III, colouration: (0) light-coloured/yellow; (1) brown; (2) bicoloured.
C4	C4	C29	C29	Antenna, antennomere IV, colouration: (0) light-coloured/yellow; (1) brown; (2) bicoloured.
C5	-	C30	-	Antenna, antennomere V, colouration: (0) light-coloured/yellow; (1) brown; (2) bicoloured.
C6	-	C31	-	Antenna, antennomere VI, colouration: (0) light-coloured/yellow; (1) brown; (2) bicoloured.
C7	-	C32	-	Antenna, antennomere VII, colouration: (0) light-coloured/yellow; (1) brown; (2) bicoloured.
C8	-	C33	-	Antenna, antennomere VIII, colouration: (0) light-coloured/yellow; (1) brown.
-	C5	-	C30	Antenna, antennomeres VII-VIII, colouration in relation to antennomeres III-VI: (0) concolourous; (1) darker.

Antenna colouration:

(0) light-coloured/yellow

(1) brown

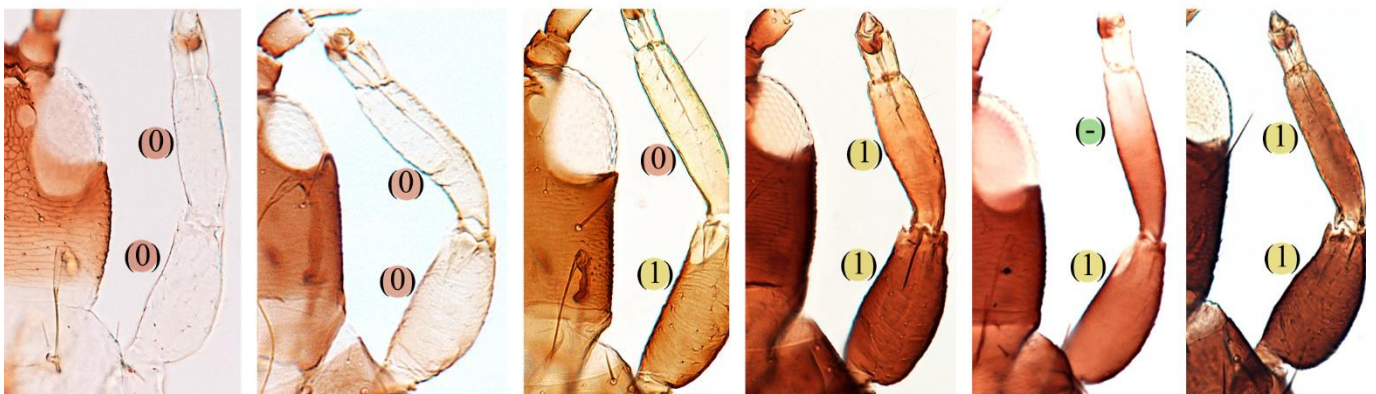
(2) bicoloured



C9	C6	C34	C31	Fore legs, femur, colouration: (0) light-coloured/yellow; (1) brown; (-) not applicable.
C10	-	C35	-	Fore legs, tibia, colour pattern: (0) uniform; (1) bicoloured.
C11	-	C36	-	Fore legs, tibia, colouration (for uniformly-coloured ones): (0) light-coloured/yellow; (1) brown; (-) not applicable.
-	C7	-	C32	Fore legs, tibia, colouration in relation to fore femora: (0) concolourous; (1) lighter.
C12	C8	C37	C33	Hind legs, tibia, colour pattern: (0) uniform; (1) bicoloured.
C13	C9	C38	C34	Hind legs, tibia, colouration (for uniformly-coloured ones): (0) light-coloured/yellow; (1) brown.
C14	C10	C39	C35	Mid and hind legs, tarsus, colouration in relation to tibia: (0) concolourous; (1) differently coloured.

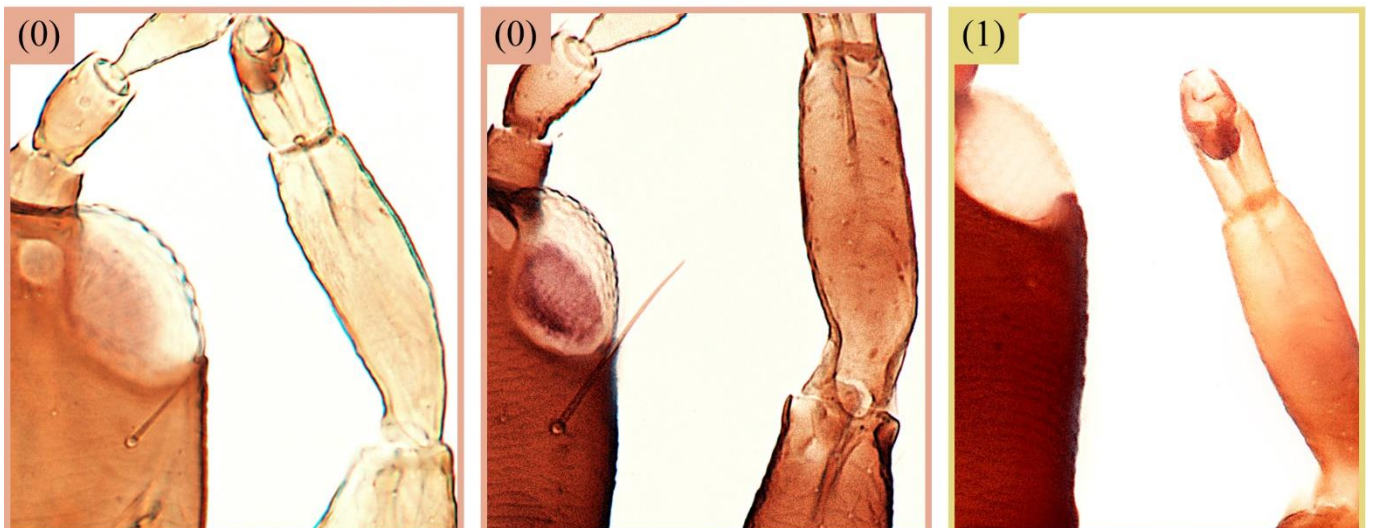
Femur/Tibia, colouration (uniform only):

(0) light-coloured/yellow (1) brown (-) not applicable



Tibia, colour pattern:

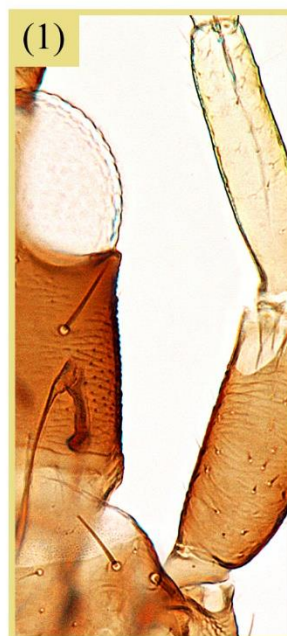
(0) uniform (1) bicoloured



Tibia, colour in relation to femur:

(0) concolourous

(1) lighter



C15	C11	C40	C36	Fore wings, apical half, colouration: (0) hyaline; (1) brown or shaded; (-) not applicable.
-----	-----	-----	-----	---

Fore wings apical half, colour:

(0) hyaline

(1) brown or shaded

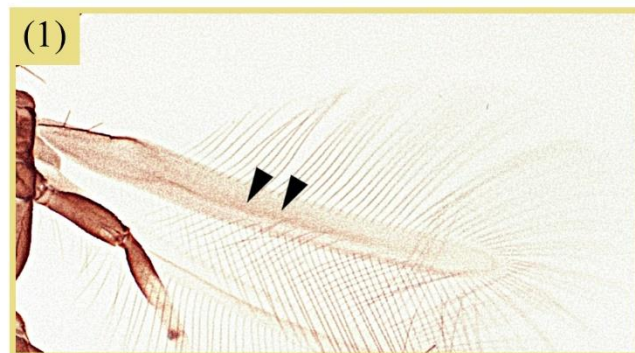


C16	C12	C41	C37	Fore wings, median dark line: (0) absent; (1) present; (-) not applicable.
C17	C13	C42	C38	Fore wings, basal area, colouration in relation to apical half of fore wing: (0) concolourous; (1) lighter; (2) darker; (-) not applicable.
C18	-	C43	-	Wings, clavus, colouration: (0) hyaline; (1) brown or shaded.

Fore wing, median dark line:

(0) absent

(1) present



Fore wing base, colour in relation to apical half:

(0) concolourous

(1) lighter

(2) darker

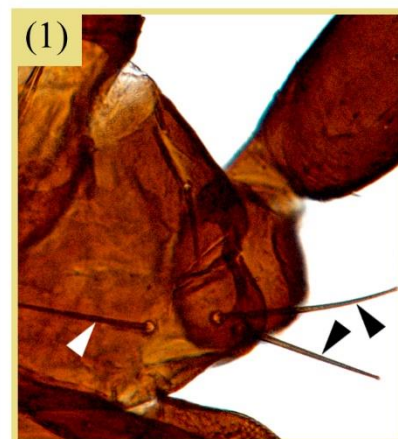
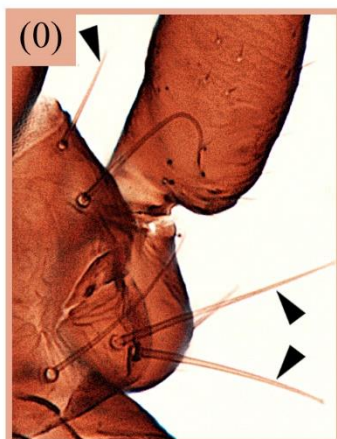
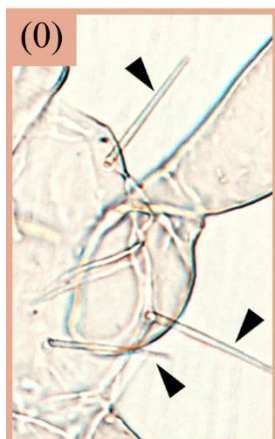


C19	C14	C44	C39	Major pronotal setae, colouration: (0) hyaline/lightly coloured; (1) dark brown.
-----	-----	-----	-----	--

Major pronotal setae, colour:

(0) hyaline/lightly coloured

(1) dark brown

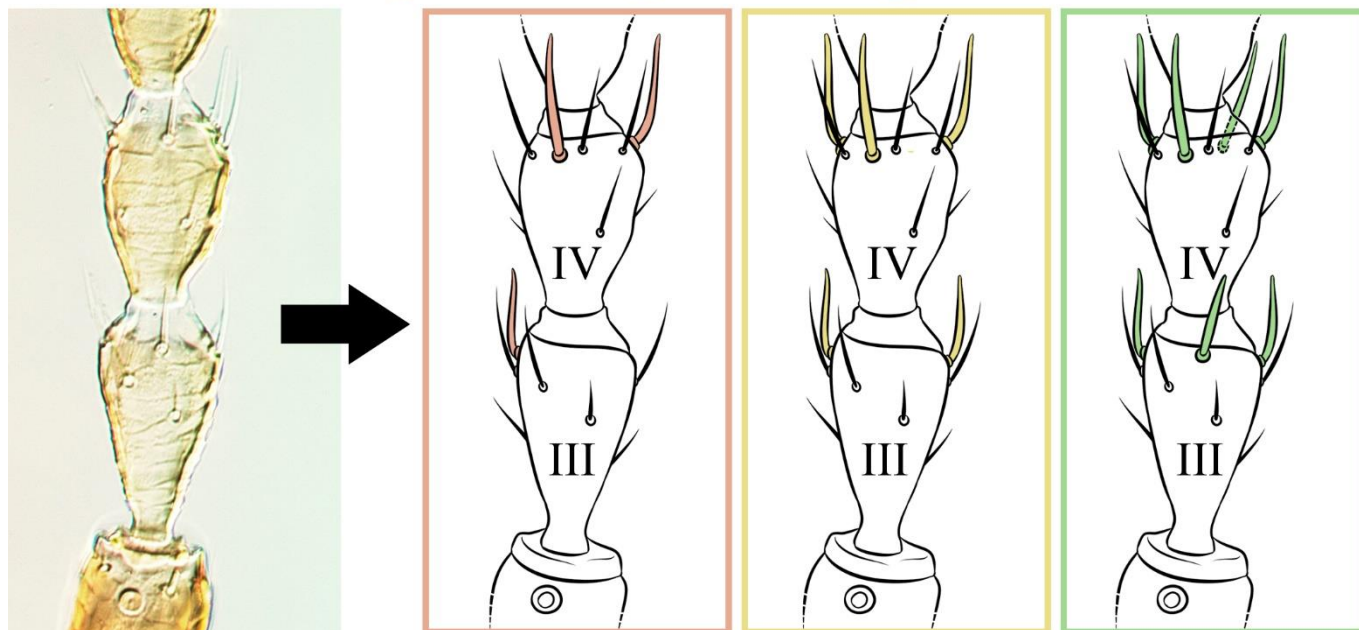


C20	C15	C45	C40	Antenna, antennomere III, number of sense cones: (0) 1 cone; (1) 2 cones; (2) 3 cones.
C21	C16	C46	C41	Antenna, antennomere IV, number of sense cones: (0) 2 cones; (1) 3 cones; (2) 4 cones.

Antennomeres III-IV, number of sense cones:

III: (0) 1 cone (1) 2 cones (2) 3 cones

IV: (0) 2 cones (1) 3 cones (2) 4 cones

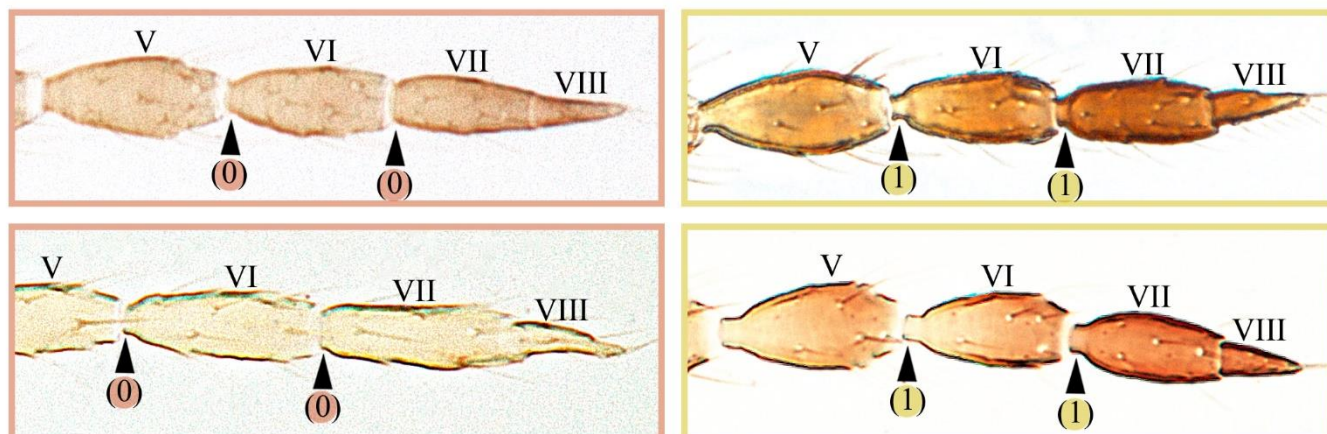


C22	-	C47	-	Antenna, antennomere VI, pedicel: (0) absent; (1) present.
C23	-	C48	-	Antenna, antennomere VII, pedicel: (0) absent; (1) present.

Antennomeres VI-VII, pedicel:

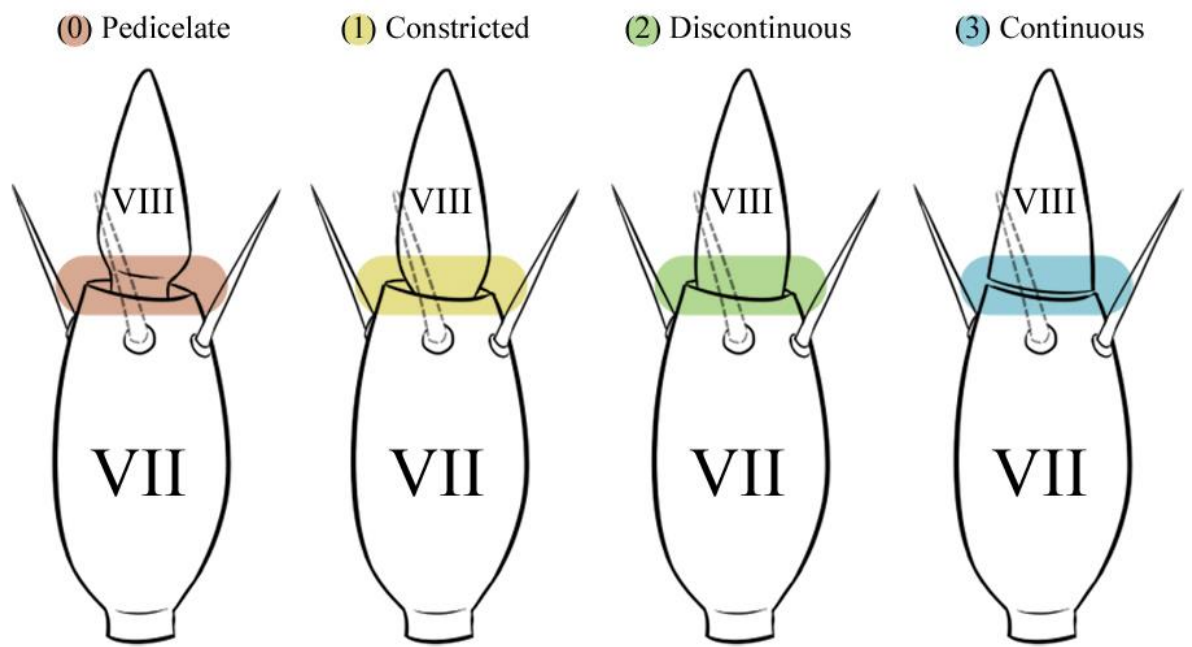
(0) absent

(1) present



C24	C17	C49	C42	Antenna, antennomere VIII, shape of base: (0) pedicelate (constricted and with pedicel); (1) constricted (without pedicel); (2) discontinuous (without constriction or pedicel, lateral margins discontinuous with margins of antennal segment VII); (3) continuous (without constriction or pedicel, lateral margins continuous with margins of antennal segment VII).
-----	-----	-----	-----	---

Antenna, antennomere VIII, shape of base:



C25	C18	C50	C43	Head, dorsal surface, median area posterior to eyes, sculpture: (0) absent; (1) present.
-----	-----	-----	-----	--

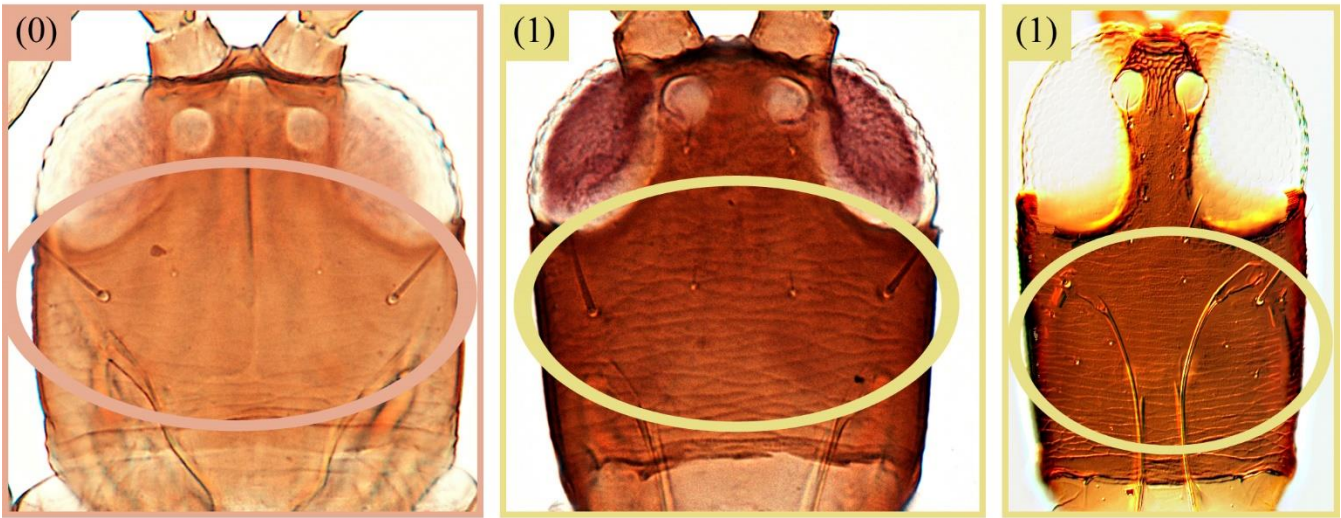
Head, dorsal surface, median area posterior to eyes, sculpture:

0

absent

1

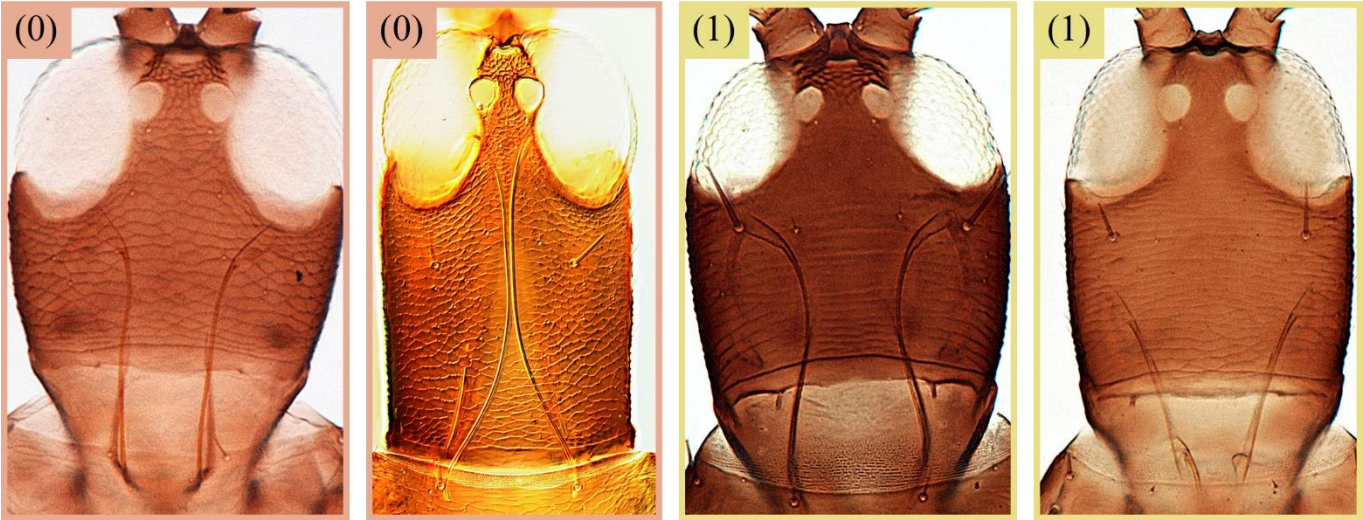
present



C26	C19	C51	C44	Head, dorsal surface, median area posterior to eyes, type of sculpture: (0) reticulate; (1) transverse lines; (-) not applicable.
-----	-----	-----	-----	---

Type of sculpture:

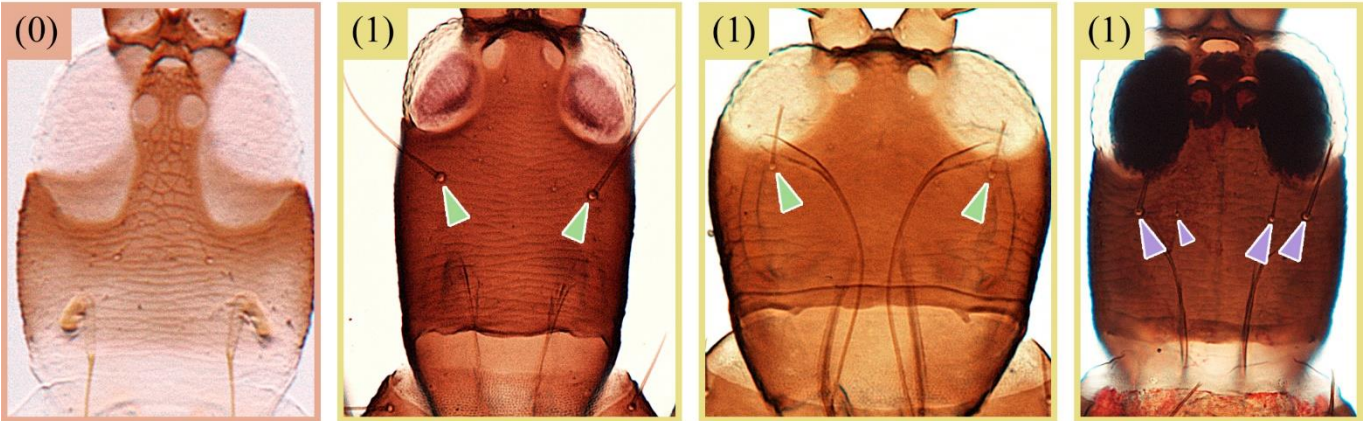
- (0) reticulate
- (1) transverse lines



C27	C20	C52	C45	Head, major postocular setae: (0) absent; (1) present.
C28	C21	C53	C46	Head, major postocular setae, number: (0) 1 pair; (1) 2 pairs; (-) not applicable.
C29	C22	C54	C47	Head, major postocular setae, shape of apex: (0) acute to blunt; (1) expanded to capitate; (-) not applicable.

Head, major postocular setae:

- (0) absent
- (1) present



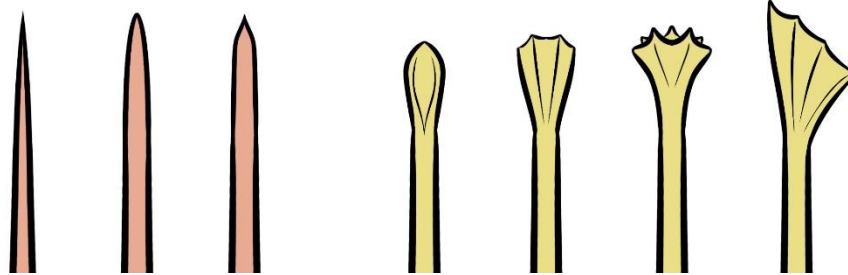
Head, major postocular setae, number:

- (0) 1 pair
- (1) 2 pairs

Setae, shape of apex:

① acute to blunt

② expanded to capitate

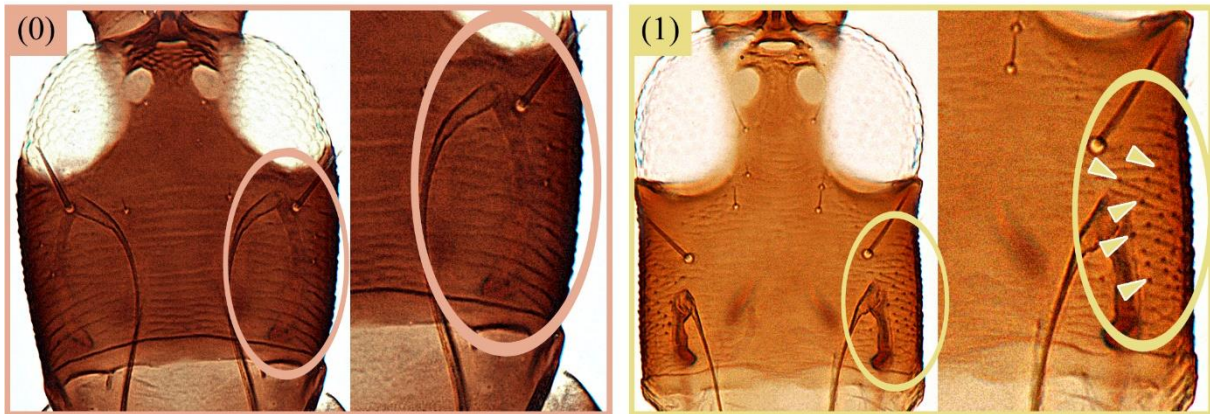


C30	C23	C55	C48	Head, lateral region, microsetae: (0) absent; (1) present.
-----	-----	-----	-----	--

Head, lateral region, microsetae:

① absent

② present

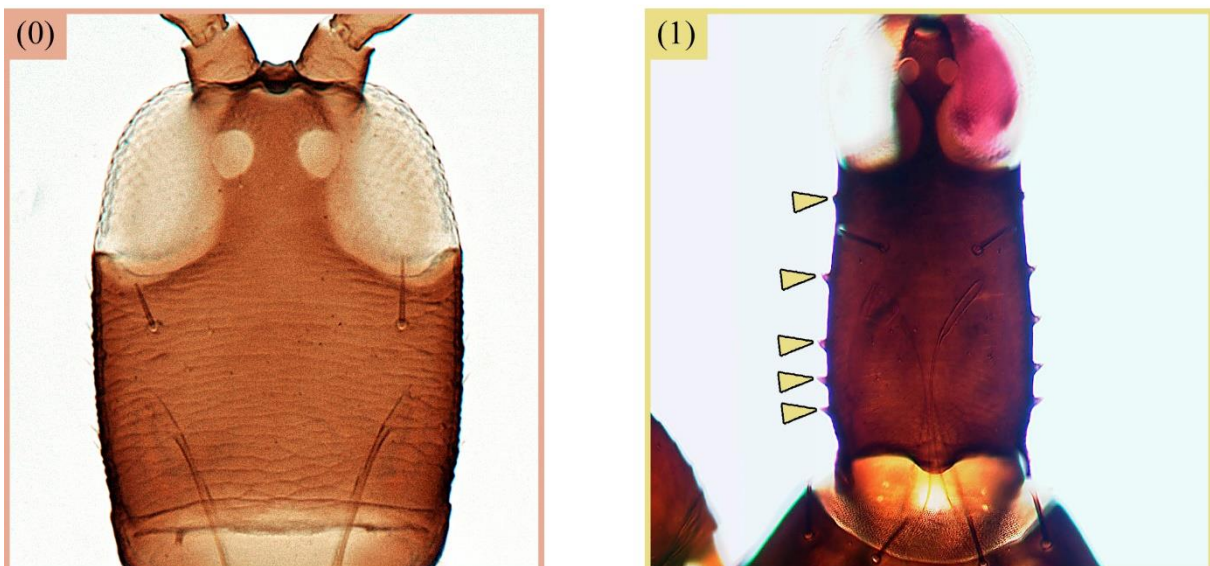


C31	C24	C56	C49	Head, cheeks, tubercles: (0) absent; (1) present.
-----	-----	-----	-----	---

Head, cheeks, tubercles:

① absent

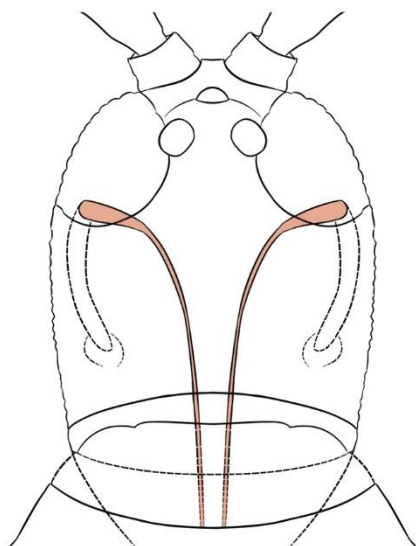
② present



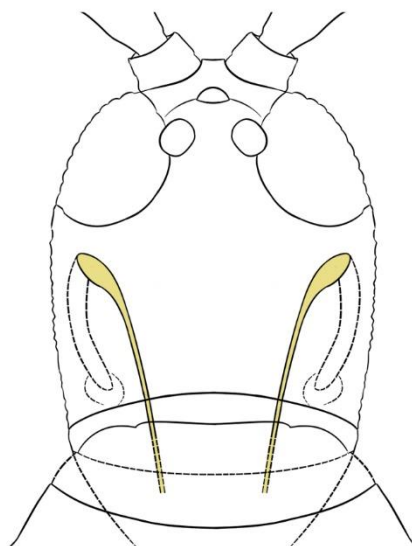
-	C25	-	C50	Head, maxillary stylets, position: (0) parallel; (1) v-shaped; (2) sinuous.
C32	-	C57	-	Head, maxillary stylets, position: (0) parallel, sometimes sinuous; (1) v-shaped.
-	C26	-	C51	Head, maxillary stylets, insertion into head capsule: (0) not reaching PO setae; (1) reaching about PO setae level; (2) reaching beyond posterior margin of eyes.
C33	-	C58	-	Head, maxillary bridge: (0) absent; (1) present.

Head, maxillary stylets, position:

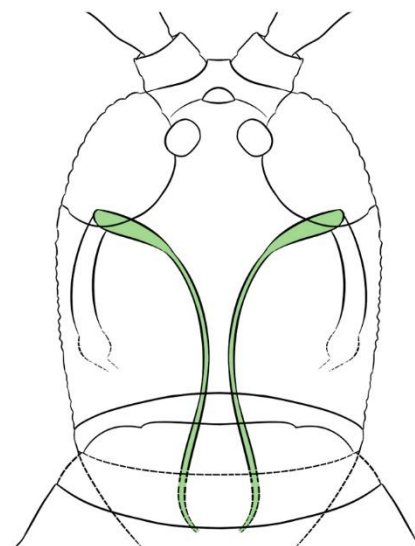
(0) parallel



(1) v-shaped



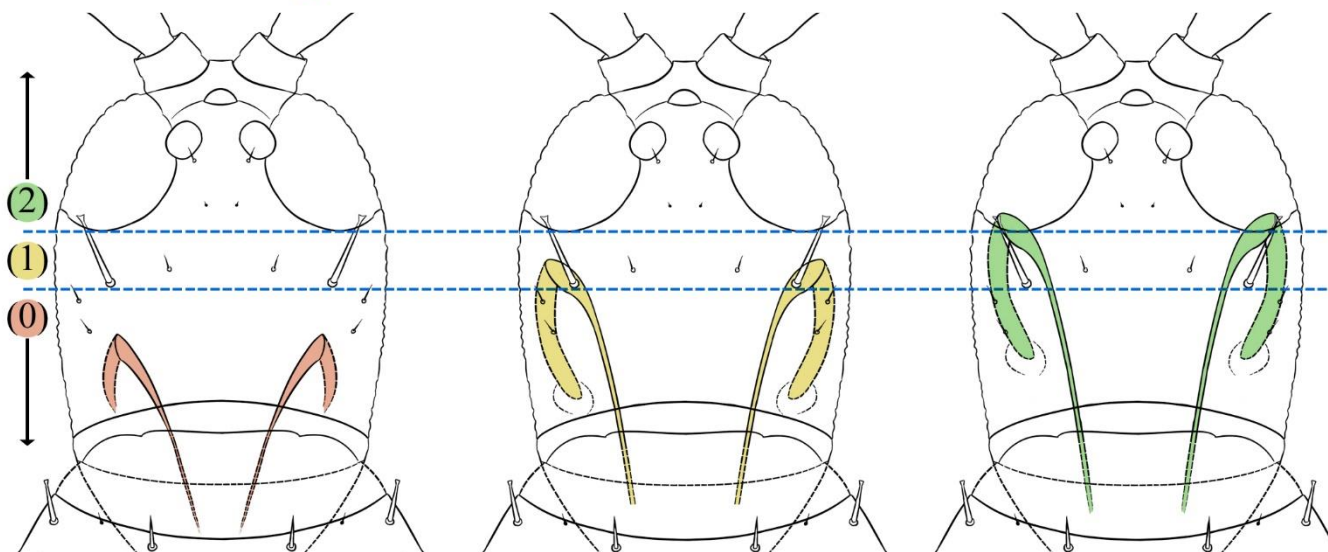
(2) sinuous



Head, maxillary stylets, insertion into head capsule:

(0) not reaching PO level **(1)** reaching around PO level

(2) reaching beyond posterior margin of eyes

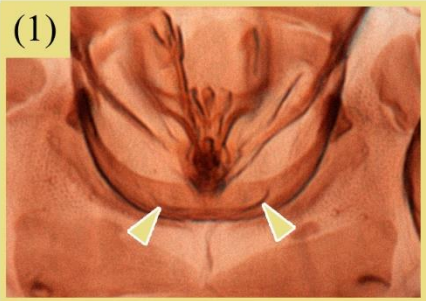
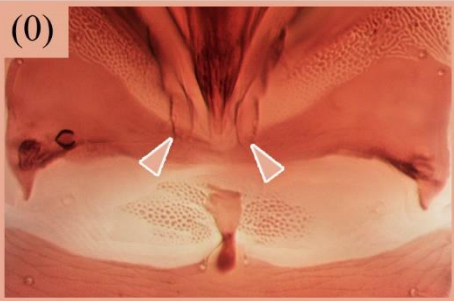


C34	C27	C59	C52	Head, labial palps, size: (0) apparent (projecting from margin of mouth cone) and with visible segmentation; (1) reduced or vestigial (similar to a papilla).
-----	-----	-----	-----	---

Head, labial palps, size:

(0) apparent

(1) reduced or vestigial

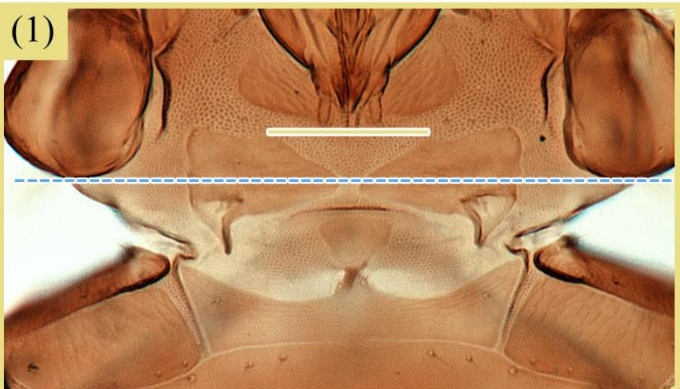
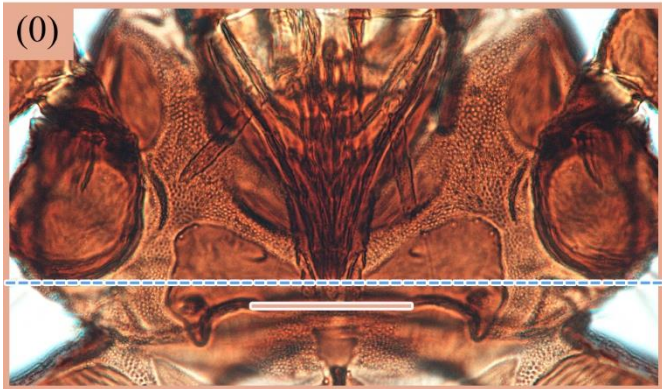


C35	C28	C60	C53	Head, mouth cone, length in relation to posterior margin of fore coxae: (0) extends to or past posterior margin; (1) does not extend to posterior margin.
-----	-----	-----	-----	---

Mouth cone, length in relation to posterior margin of fore coxae:

(0) extends to or past posterior margin

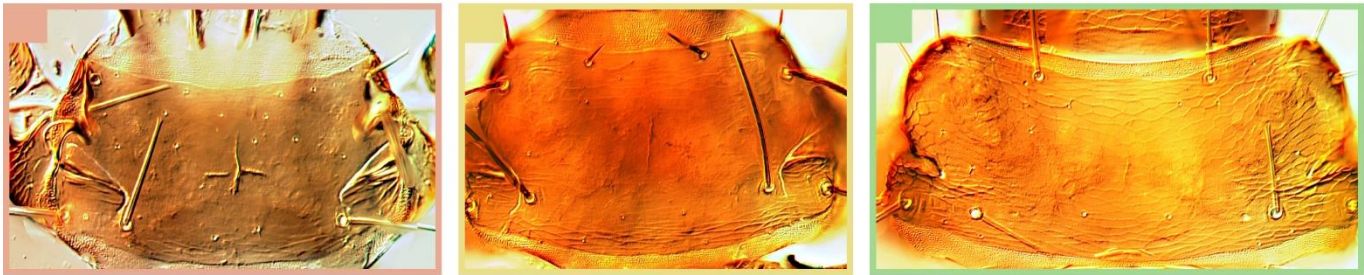
(1) does not extend to posterior margin



-	C29	-	C54	Pronotum, area of occupation of sculpture: (0) only posteriorly; (1) near anterior and posterior margins, absent medially; (2) covering the entire surface of pronotum.
C36	-	C61	-	Pronotum, median region, sculpture: (0) absent; (1) present.

Pronotum, area of occupation of sculpture:

- (0)
only posteriorly
- (1)
near anterior and posterior margins
- (2)
covering the entire surface of pronotum



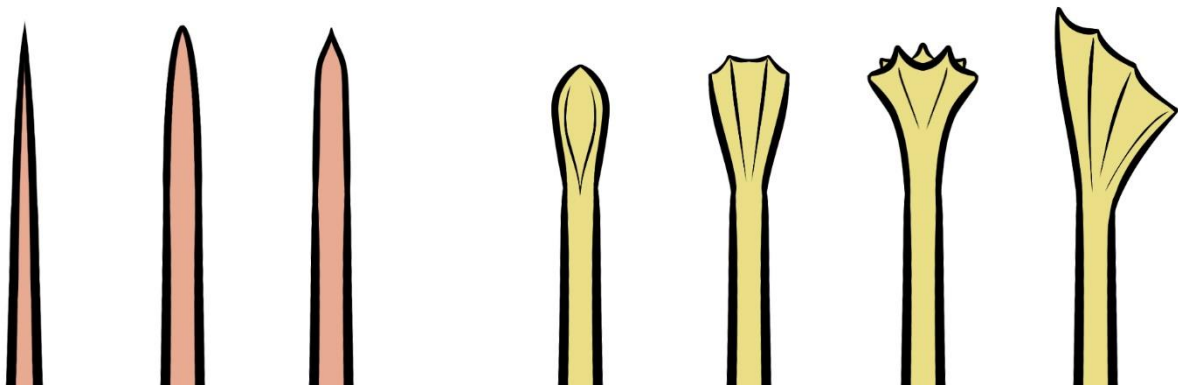
Pronotum, median region, sculpture:

- (0)
absent
- (1)
present

C37	-	C62	-	Pronotum, anteromarginal setae, shape of apex: (0) acute to blunt; (1) expanded to capitate.
C38	C30	C63	C55	Pronotum, anteroangular setae, shape of apex: (0) acute to blunt; (1) expanded to capitate.
C39	-	C64	-	Pronotum, midlateral setae, shape of apex: (0) acute to blunt; (1) expanded to capitate.
C40	C31	C65	C56	Pronotum, epimeral setae, shape of apex: (0) acute to blunt; (1) expanded to capitate.

Setae, shape of apex:

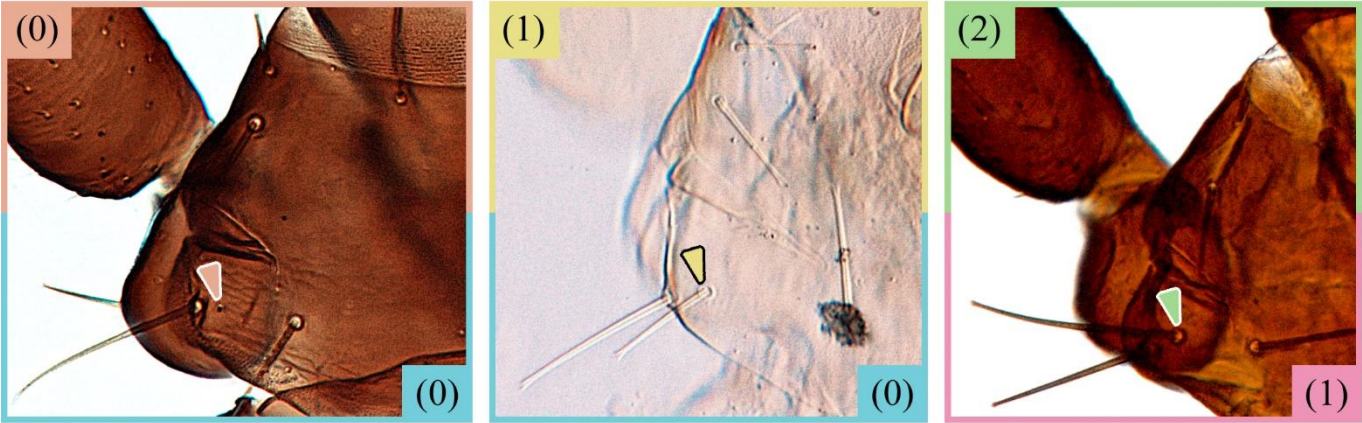
- (0)
acute to blunt
- (1)
expanded to capitate



-	C32	-	C57	Pronotum, epimeral region, development of internal pair of EP setae: (0) minute/not developed; (1) well-developed, but at most half the length of the external pair; (2) as long as the external pair.
C41	-	C66	-	Pronotum, epimeral region, length of internal pair of epimeral setae in relation to external pair: (0) half or less; (1) about as long as the external pair.
C42	-	C67	-	Pronotum, posteroangular setae, shape of apex: (0) acute to blunt; (1) expanded to capitate.
C43	-	C68	-	Pronotum, coxal setae, shape of apex: (0) acute to blunt; (1) expanded to capitate.

Pronotum, epimeral region, development of internal pair of EP setae:

- (0) minute/not developed (1) at most half the length of the external pair
 (2) as long as the external pair

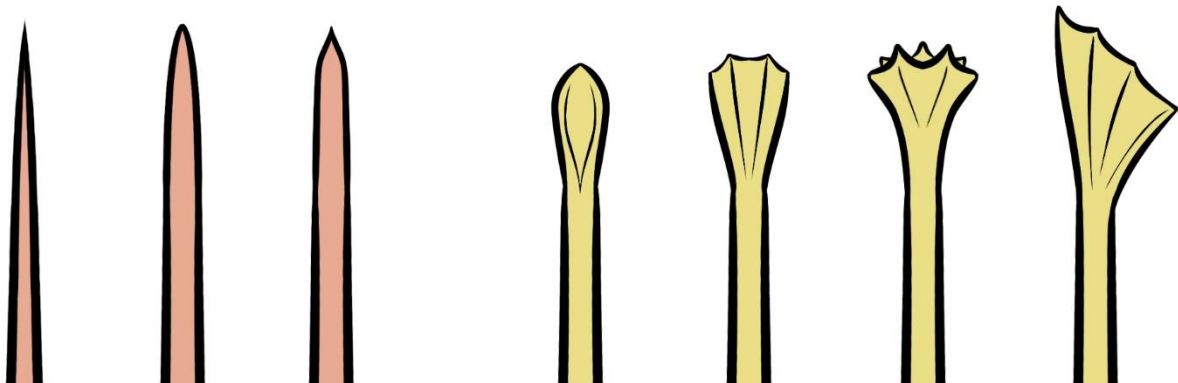


Pronotum, epimeral region, length of internal pair of epimeral setae in relation to external pair:

- (0) half or less (1) about as long as the external pair

Setae, shape of apex:

- (0) acute to blunt (1) expanded to capitate

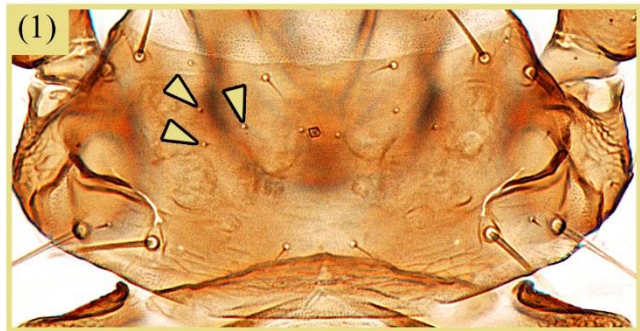


C44	C33	C69	C58	Pronotum, discal setae: (0) absent; (1) present.
-----	-----	-----	-----	--

Pronotum, discal setae:

(0) absent

(1) present

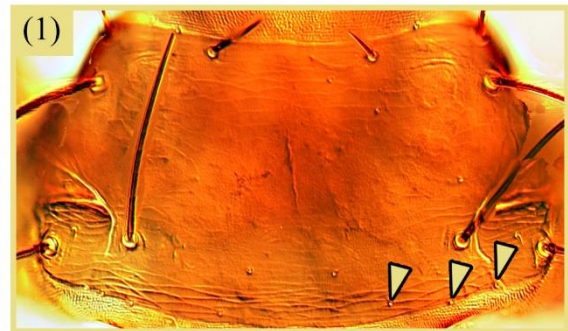
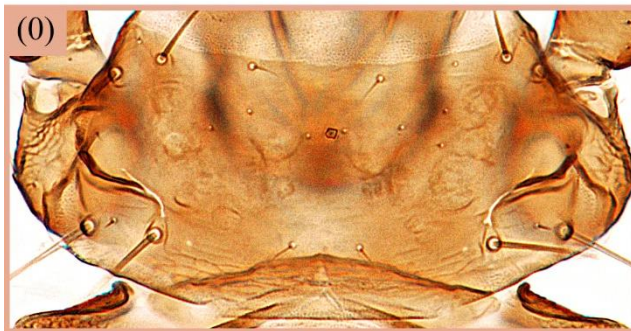


C45	C34	C70	C59	Pronotum, minor posteromarginal setae: (0) absent; (1) present.
-----	-----	-----	-----	---

Pronotum, minor posteromarginal setae:

(0) absent

(1) present



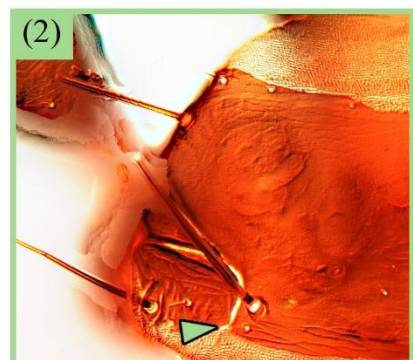
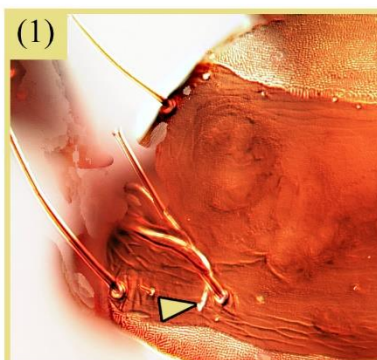
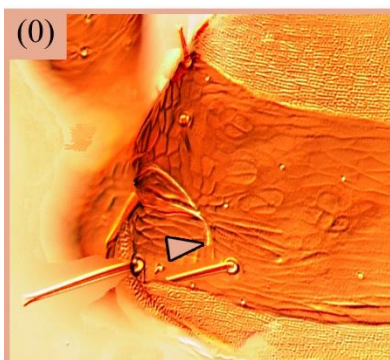
C46	C35	C71	C60	Pronotum, notopleural suture: (0) incomplete and short (distance from the posterior margin greater than the diameter of the pore of the posteroangular setae); (1) almost complete (distance from the posterior margin similar or less than the width of the pore of the posteroangular setae); (2) complete (isolates the epimeral sclerites from the pronotum).
-----	-----	-----	-----	---

Pronotum, notopleural suture:

(0) incomplete and short

(1) almost complete

(2) complete

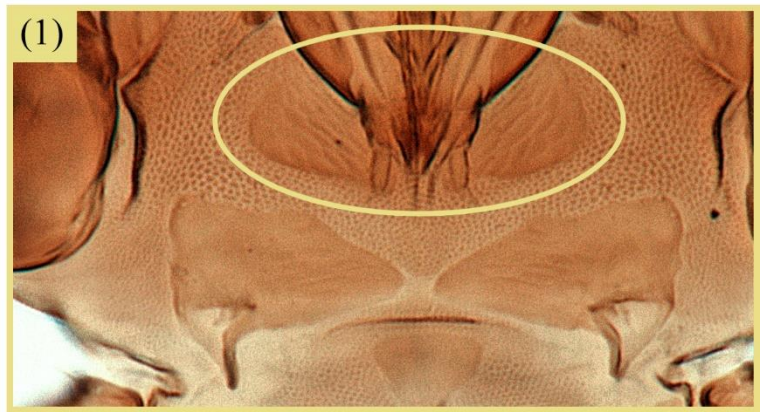
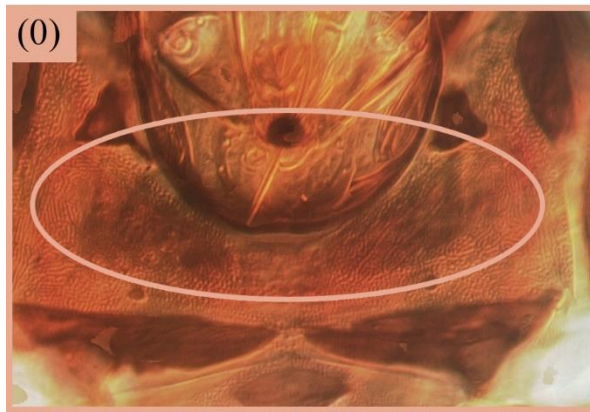


-	C36	-	C61	Prosternum, presence of clear and well-developed basantra: (0) absent; (1) present.
C47	-	C72	-	Prosternum, basantra: (0) absent; (1) present.

Prosternum, basantra:

(0) absent

(1) present

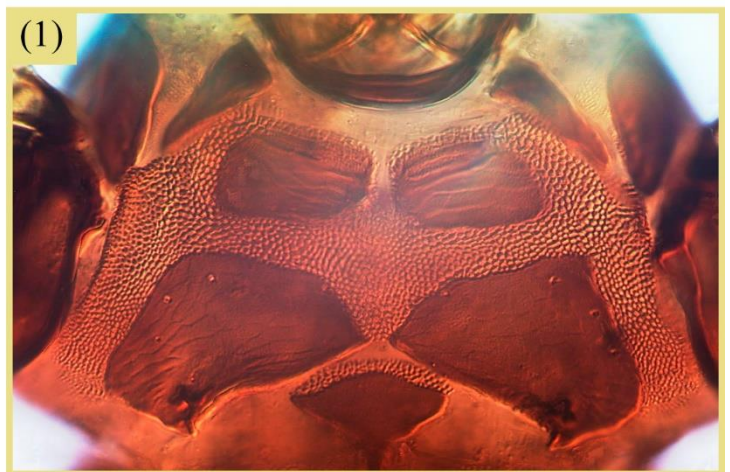
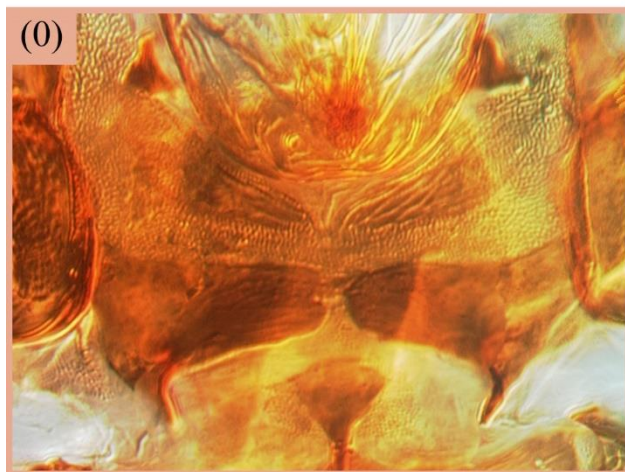


C48	-	C73	-	Prosternum, basantra, development: (0) faintly indicated; (1) strongly sclerotized; (-) not applicable.
-----	---	-----	---	---

Prosternum, basantra, development:

(0) faintly indicated

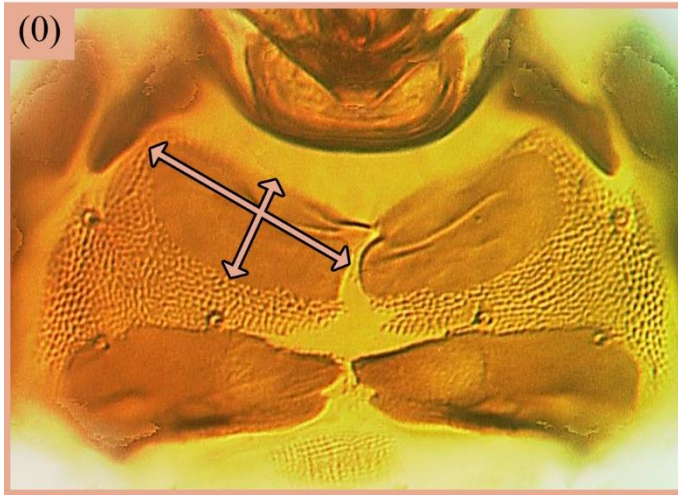
(1) strongly sclerotized



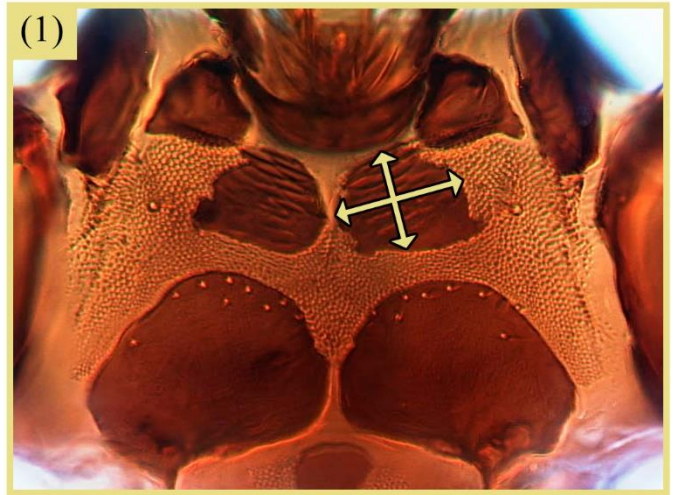
C49	-	C74	-	Prosternum, basantra, shape: (0) wider than long; (1) length and width subequal; (2) longer than wide; (-) not applicable.
-----	---	-----	---	--

Prosternum, basantra, shape:

(0) wider than long



(1) length and width subequal



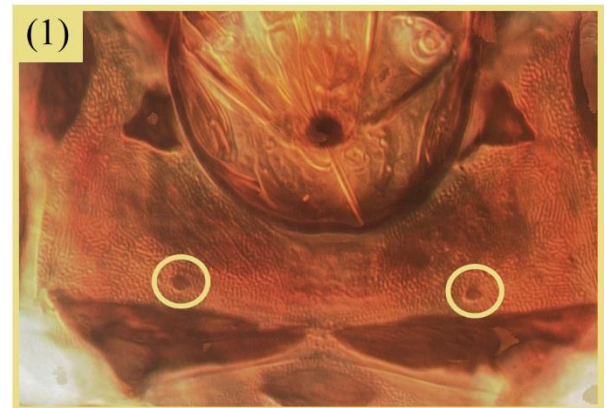
C50	C37	C75	C62	Prosternum, chitinous islets anterior to ferna: (0) absent; (1) present.
-----	-----	-----	-----	--

Prosternum, chitinous islets anterior to ferna:

(0) absent



(1) present

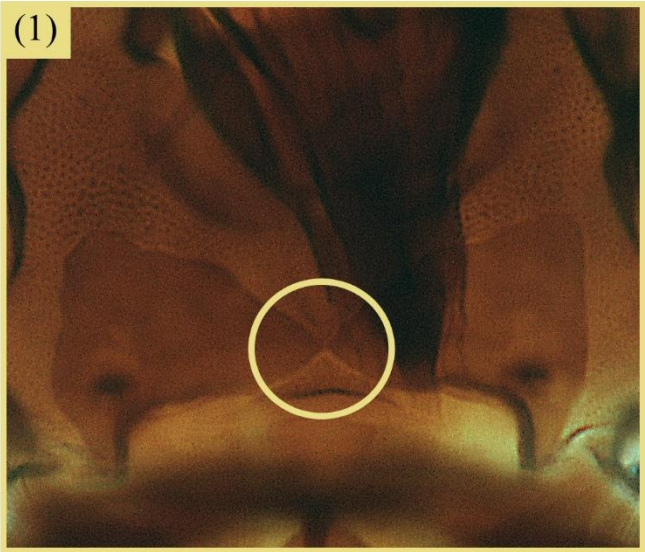


C51	-	C76	-	Prosternum, ferna, median contact between both plates: (0) absent; (1) present.
-----	---	-----	---	---

Prosternum, ferna, median contact between plates:

(0) absent

(1) present

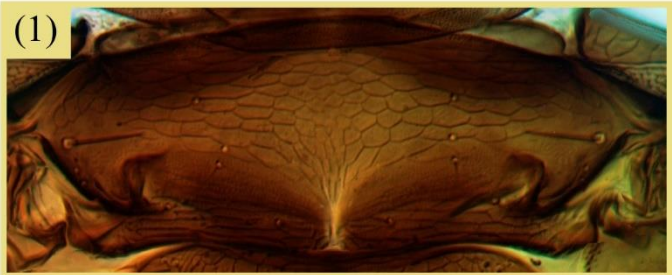
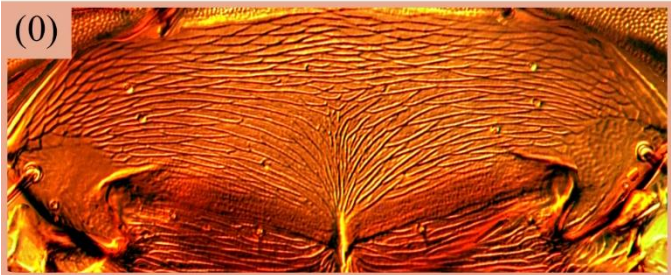
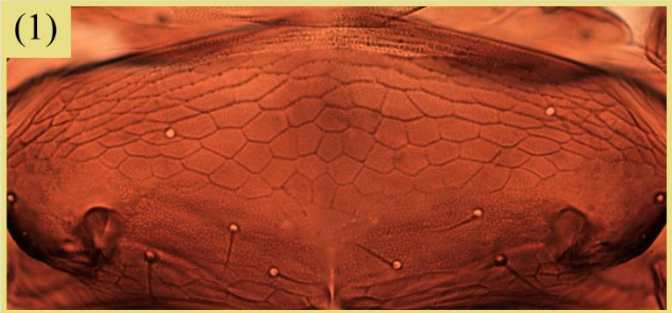


-	C38	-	C63	Mesonotum, median region, sculpture formed by equiangular reticulation: (0) absent; (1) present.
C52	-	C77	-	Mesonotum, anteromedian region, sculpture: (0) absent; (1) present.

Mesonotum, median region, sculpture formed by equiangular reticulation:

(0) absent

(1) present

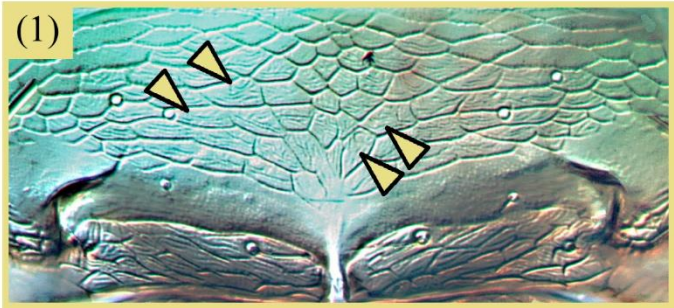
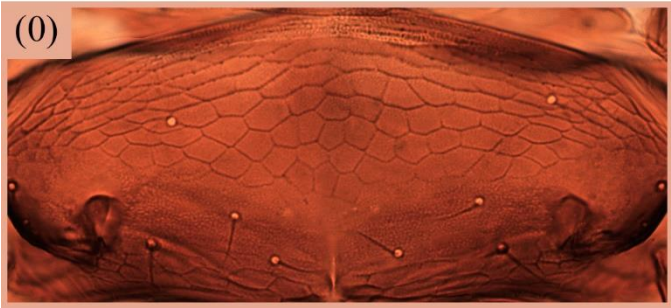


C53	C39	C78	C64	Mesonotum, sculpture, internal markings: (0) absent; (1) present; (-) not applicable.
-----	-----	-----	-----	---

Mesonotum, sculpture, internal markings:

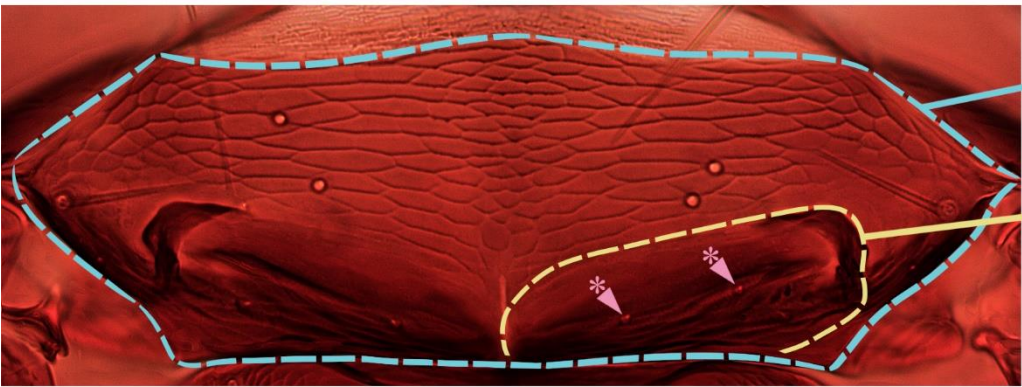
(0) absent

(1) present



C54	C40	C79	C65	Mesonotum, posterior discal setae, position: (0) all pairs arising within the posterior area of differentiated sculpture; (1) at least one pair arising at the margin or anterior to the posterior area of differentiated sculpture.
-----	-----	-----	-----	--

Mesonotum, posterior discal setae, position:



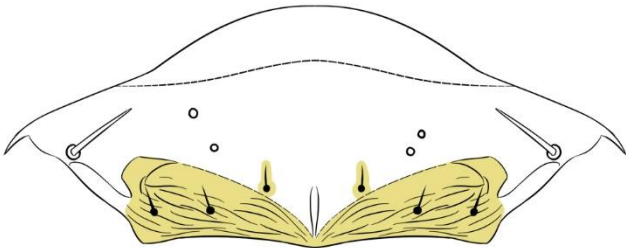
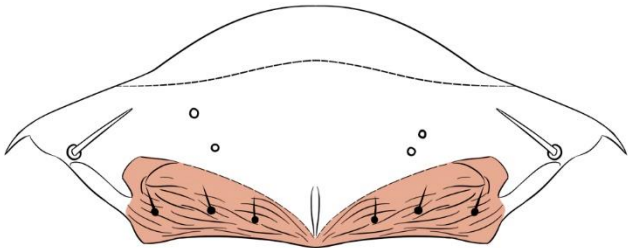
Mesonotum

Area of differentiated sculpture

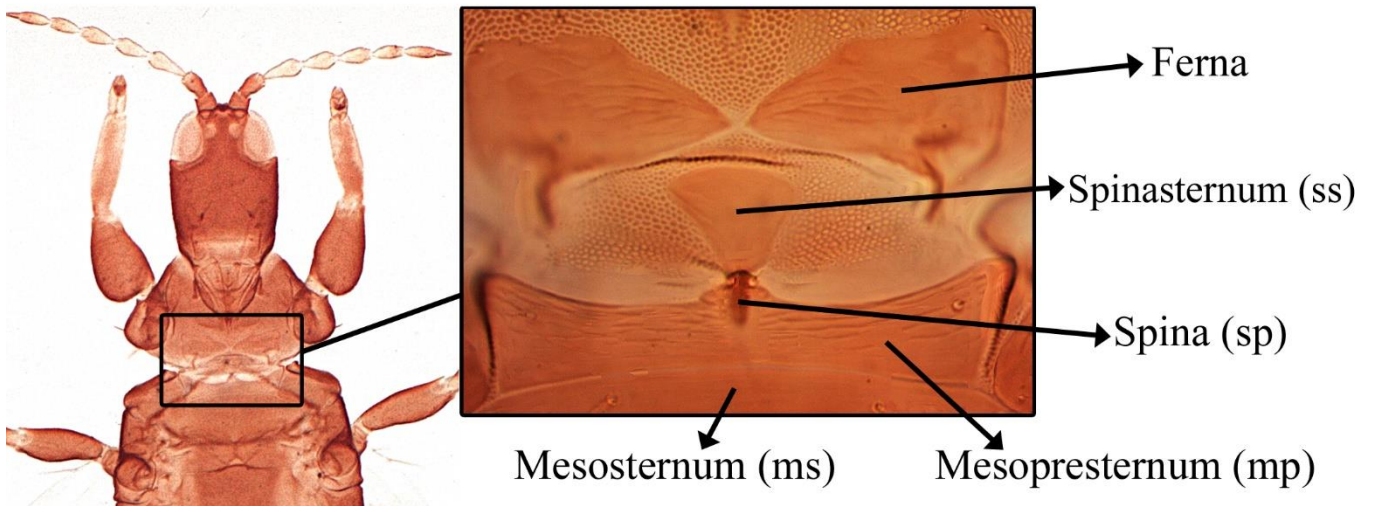
*Posterior discal setae

(0) all pairs arising within the posterior area of differentiated sculpture

(1) at least one pair arising at the margin or anterior to the posterior area of differentiated sculpture



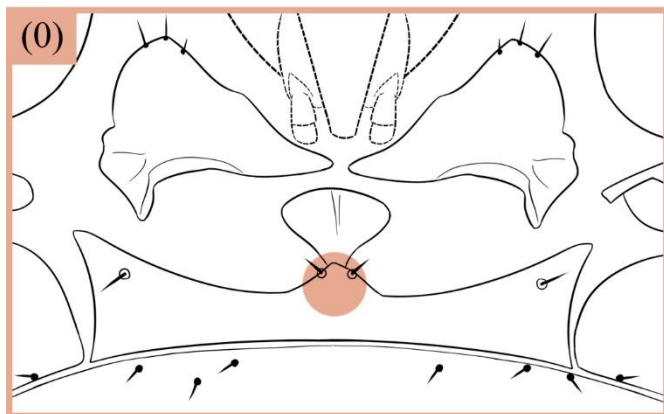
Prosternum and mesosternum parts:



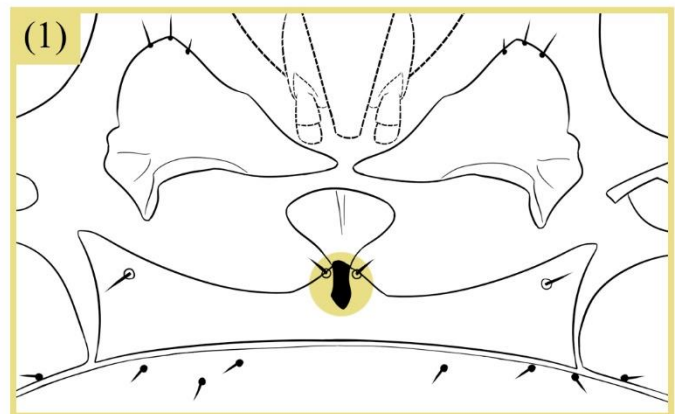
C55	C41	C80	C66	Mesosternum, spina: (0) absent; (1) present.
-----	-----	-----	-----	--

Mesosternum, spina:

(0) absent



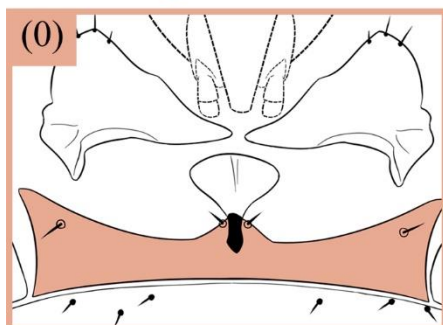
(1) present



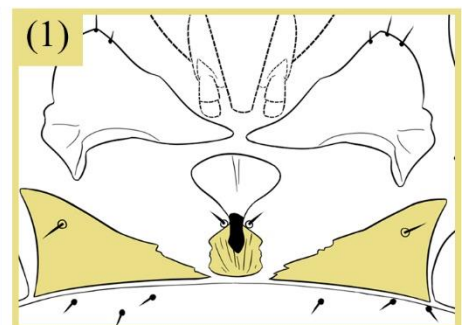
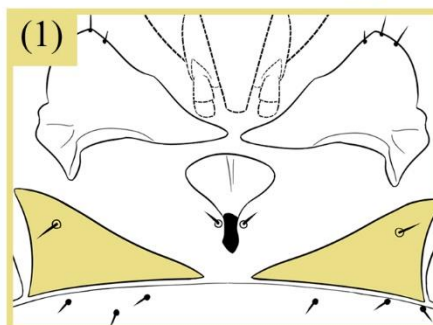
C56	C42	C81	C67	Mesosternum, mesopresternum, shape: (0) entire; (1) divided.
-----	-----	-----	-----	--

Mesosternum, mesopresternum, shape:

(0) entire



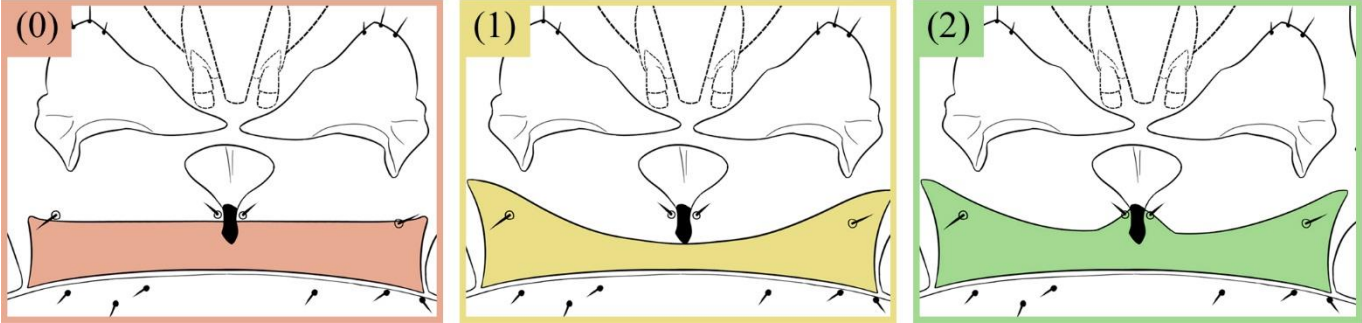
(1) divided



C57	C43	C82	C68	Mesosternum, mesopresternum, anterior margin (when entire): (0) straight; (1) one median "excavation"; (2) two "excavations" and with a median projection; (-) not applicable.
-----	-----	-----	-----	--

Mesosternum, mesopresternum, anterior margin:

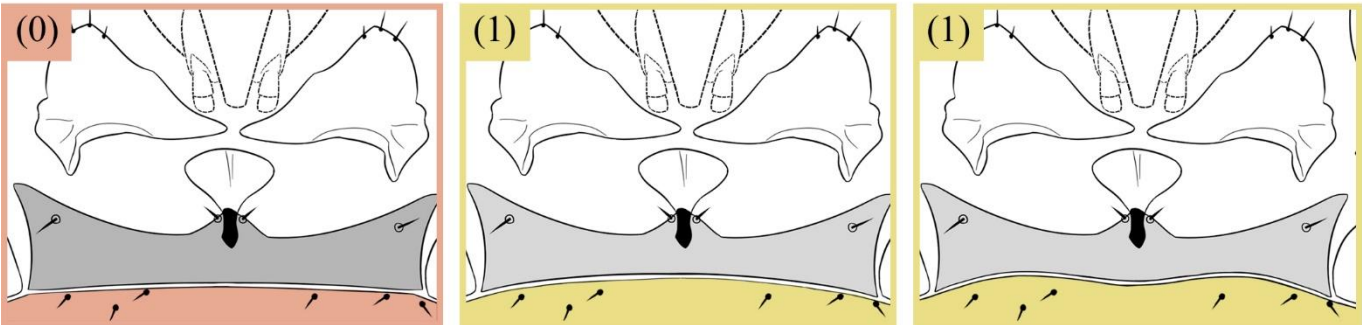
(0) straight
(1) one "excavation"
(2) two "excavations"



C58	-	C83	-	Mesosternum, major sternal plate, shape of anterior margin: (0) straight; (1) curved or sinuous.
-----	---	-----	---	--

Mesosternum, major sternal plate, shape of anterior margin:

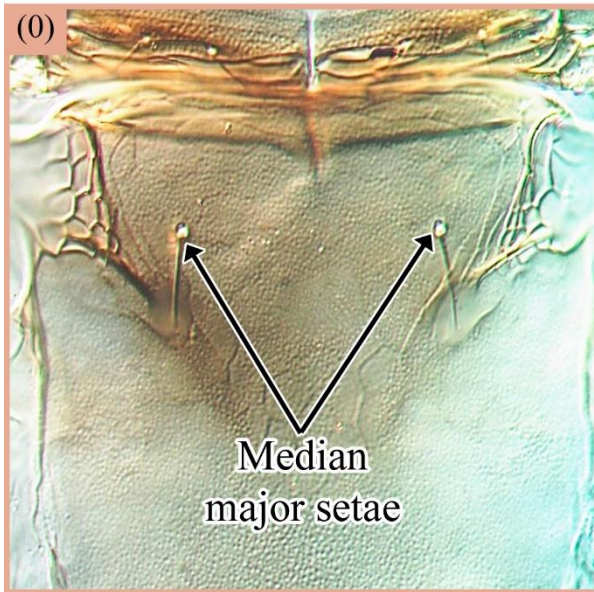
(0) straight
(1) curved or sinuous



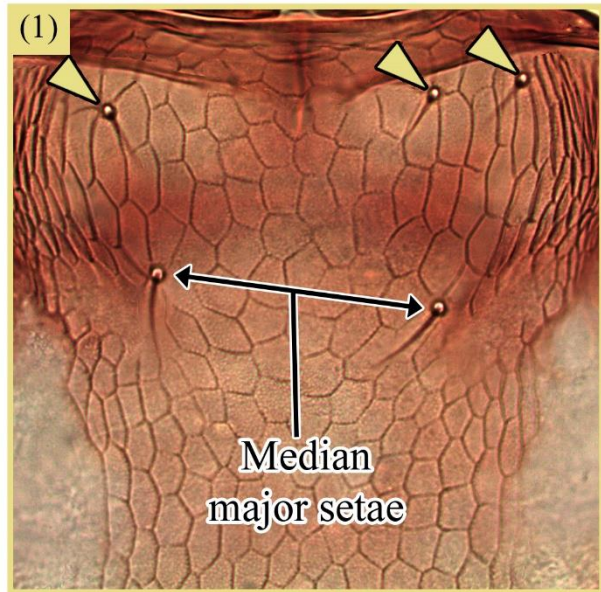
C59	C44	C84	C69	Metanotum, anterior discal setae: (0) absent; (1) present.
-----	-----	-----	-----	--

Metanotum, anterior discal setae:

(0) absent



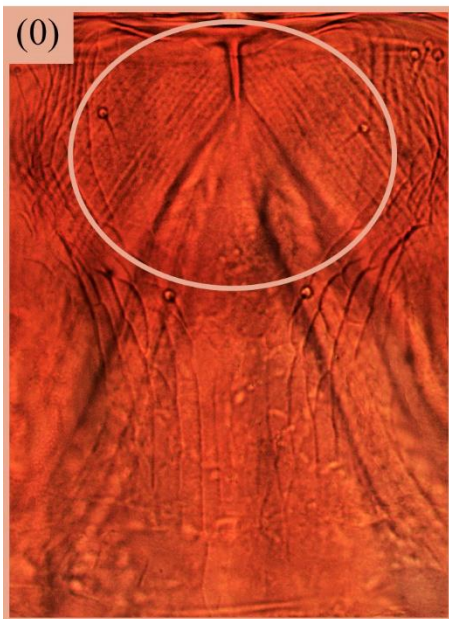
(1) present



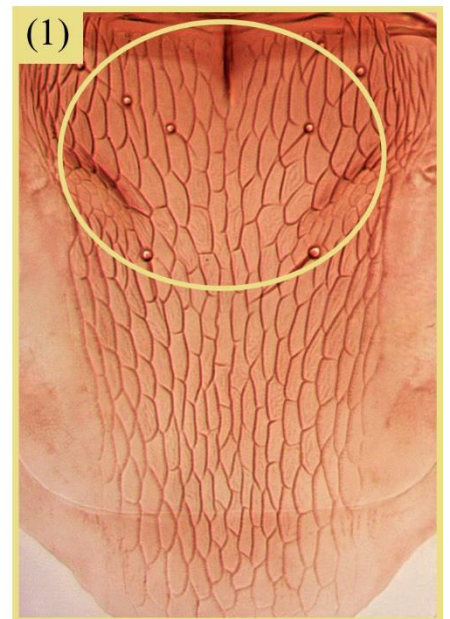
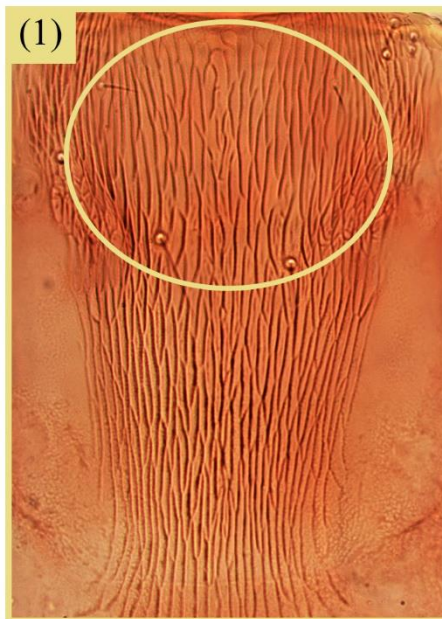
C60	C45	C85	C70	Metanotum, anteromedian region, sculpture: (0) absent; (1) present.
-----	-----	-----	-----	---

Metanotum, anteromedian region, sculpture:

(0) absent



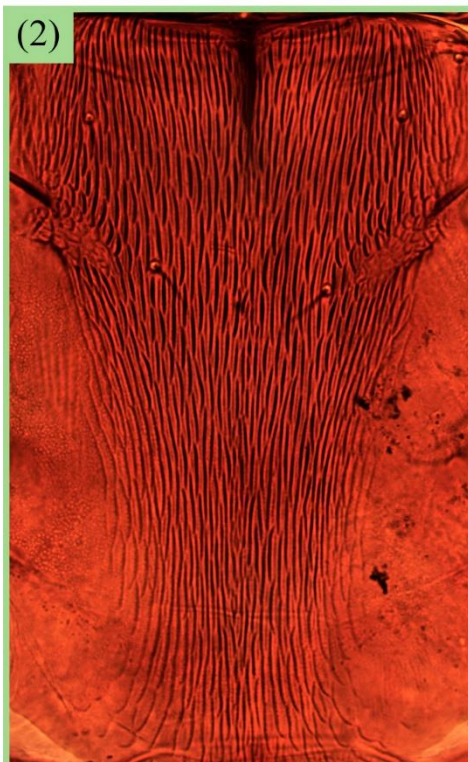
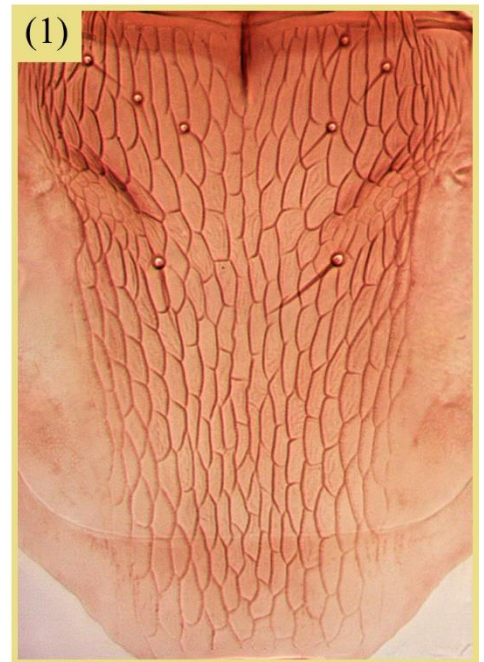
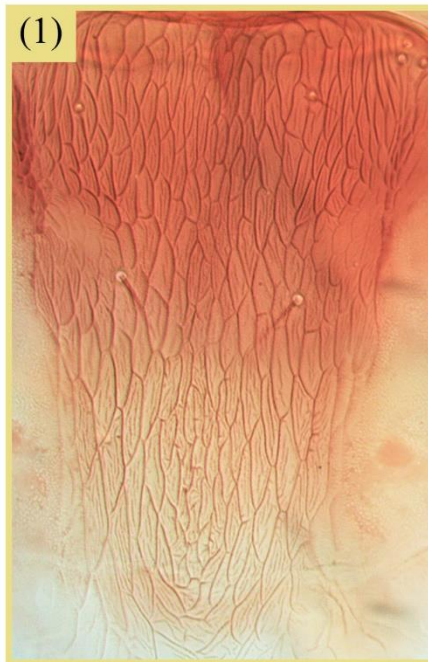
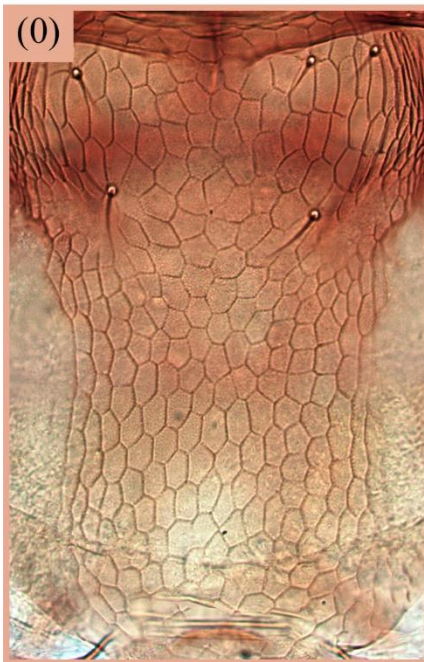
(1) present



-	C46	-	C71	Metanotum, sculptured area, type of sculpture: (0) equiangular reticles; (1) longitudinally elongate reticles; (2) entirely longitudinally striate; (3) anterior half longitudinally striate, posterior half reticulate.
C61	-	C86	-	Metanotum, anteromedian region, type of sculpture: (0) equiangular reticles; (1) longitudinally elongated reticles; (2) longitudinally striate; (3) Transversely striate; (-) not applicable.

Metanotum, sculptured area, type of sculpture:

- (0) equiangular reticles (1) elongate reticles (2) longitudinally striate
 (3) anterior half striate, posterior half reticulate

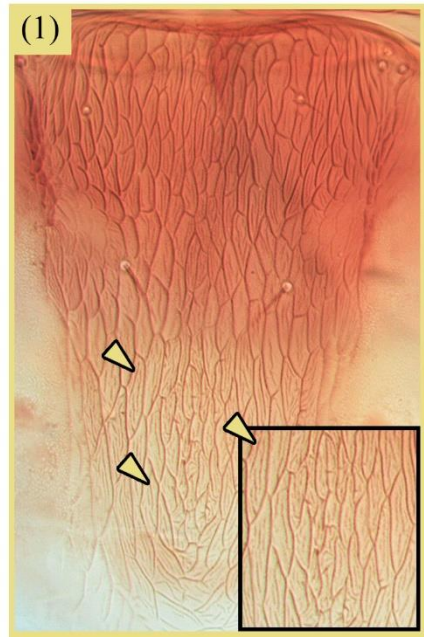
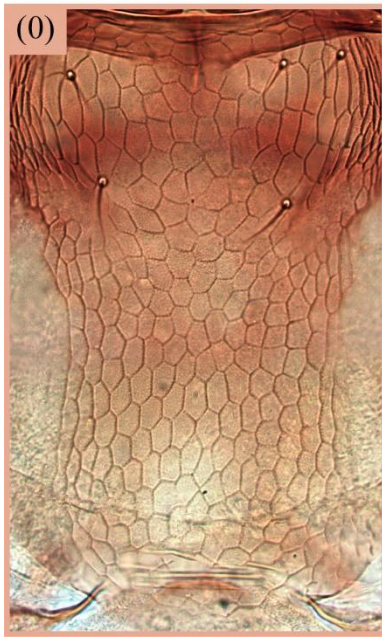


C62	C47	C87	C72	Metanotum, sculpture, internal markings: (0) absent; (1) present.
-----	-----	-----	-----	---

Metanotum, sculpture, internal markings:

(0) absent

(1) present



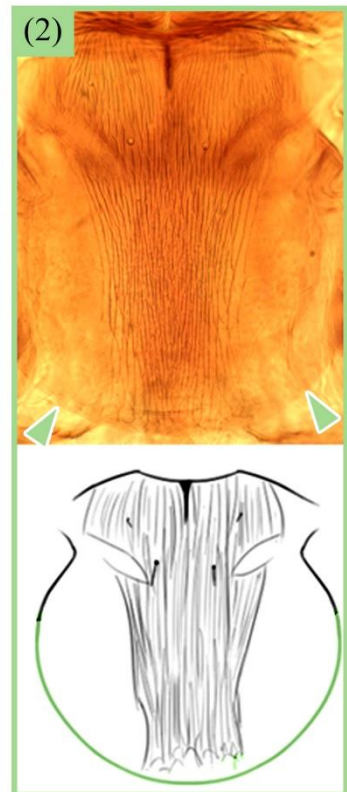
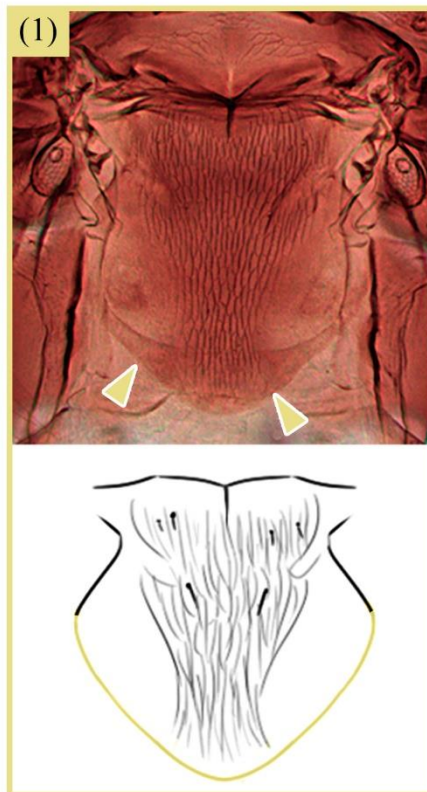
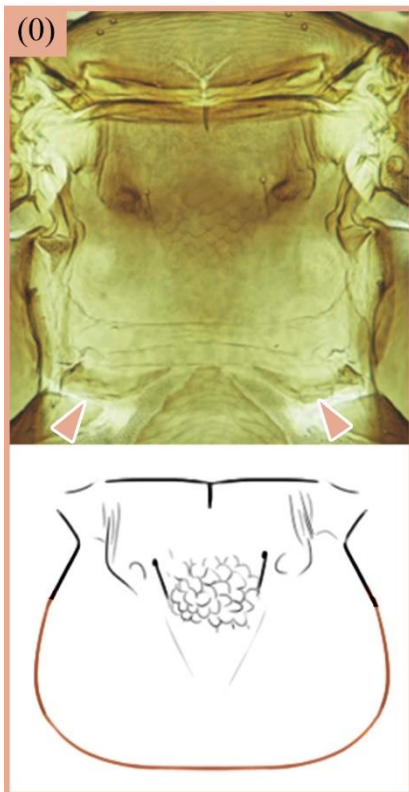
C63	C48	C88	C73	Metanotum, craspedum, shape of posterior margin: (0) straight; (1) angular; (2) curved or rounded.
-----	-----	-----	-----	--

Metanotum, craspedum, shape of posterior margin:

(0) straight

(1) angular

(2) rounded



-	C49	-	C74	Metanotum, lateral limits of sculptured area, width on posterior area: (0) half of anterior margin width or less; (1) more than half of anterior margin width.
---	-----	---	-----	--

Metanotum, lateral limits of sculptured area,
width on posterior area:

- (0) half of anterior margin width or less
- (1) more than half of anterior margin width

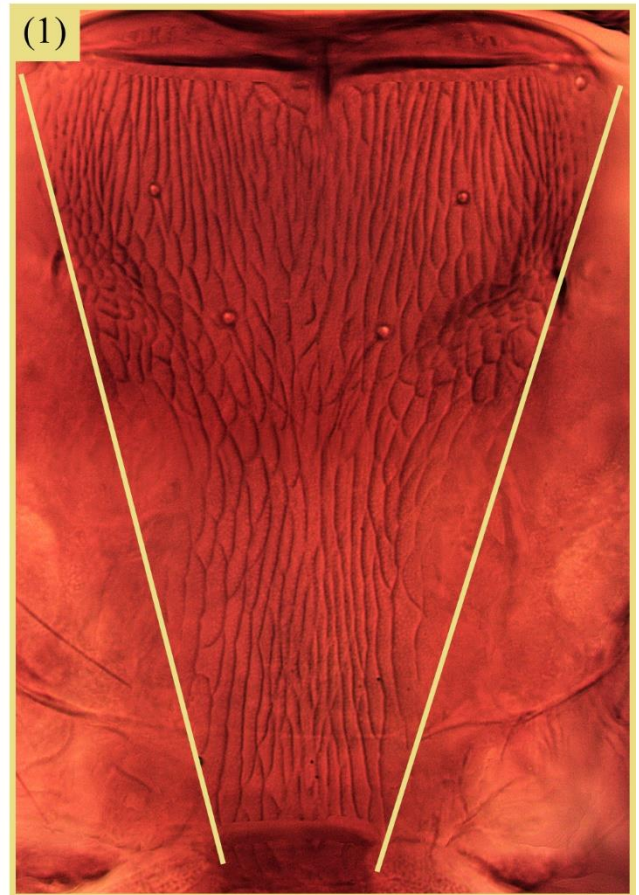


C64	-	C89	-	Metanotum, sculpture, lateral limits of sculpture area: (0) almost parallel; (1) tapering towards posterior margin.
-----	---	-----	---	---

Metanotum, sculpture, lateral limits of sculpture area:

(0) almost parallel

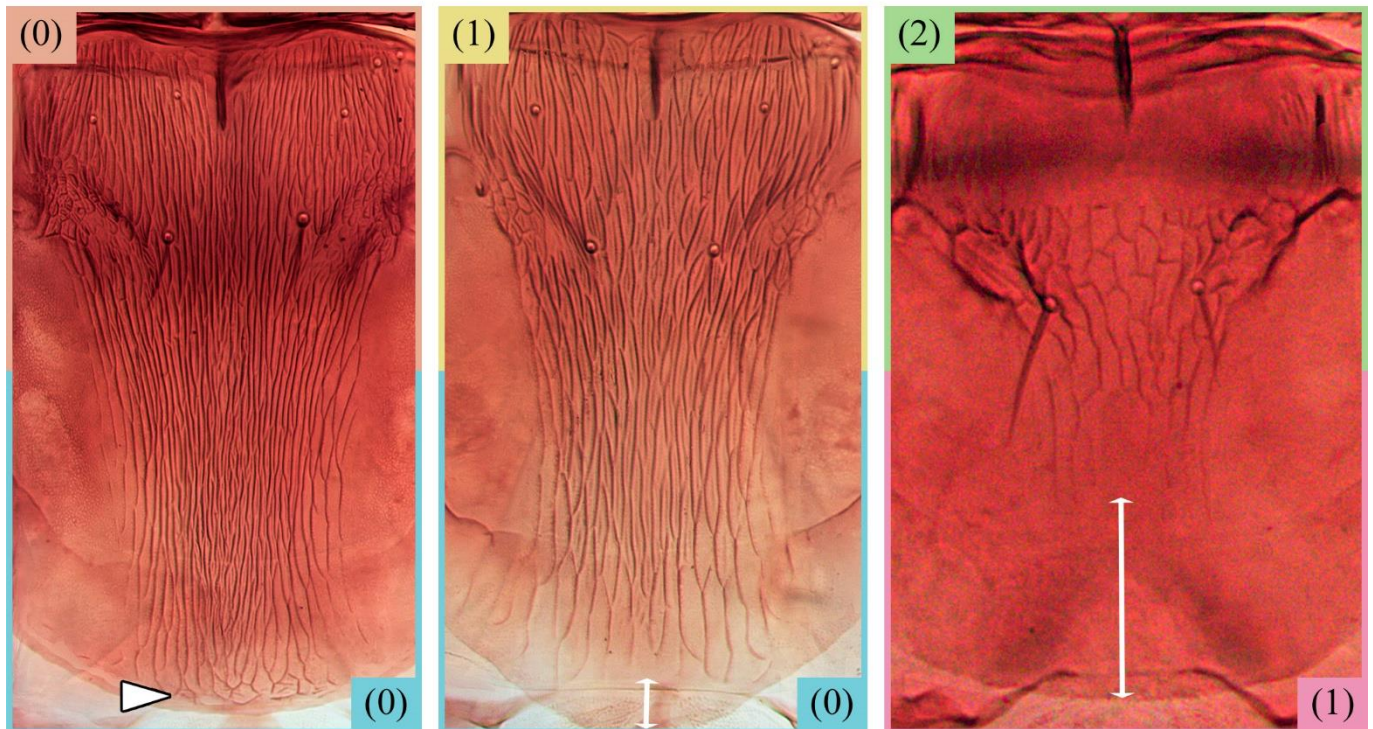
(1) tapering towards posterior margin



-	C50	-	C75	Metanotum, sculptured area, posterior limit: (0) sculpture close to or reaching posterior margin of craspedum; (1) sculpture distanced from posterior margin of craspedum.
C65	-	C90	-	Metanotum, sculpture, posterior limit of sculptured area: (0) reaching posterior margin of craspedum; (1) almost reaching posterior margin of craspedum, but not touching it; (2) not close to posterior margin of craspedum.

Metanotum, sculpture, posterior limit of sculptured area:

- (0) reaching posterior margin of craspedum
- (1) almost reaching posterior margin of craspedum, but not touching it
- (2) not close to posterior margin of craspedum



Metanotum, sculptured area, posterior limit:

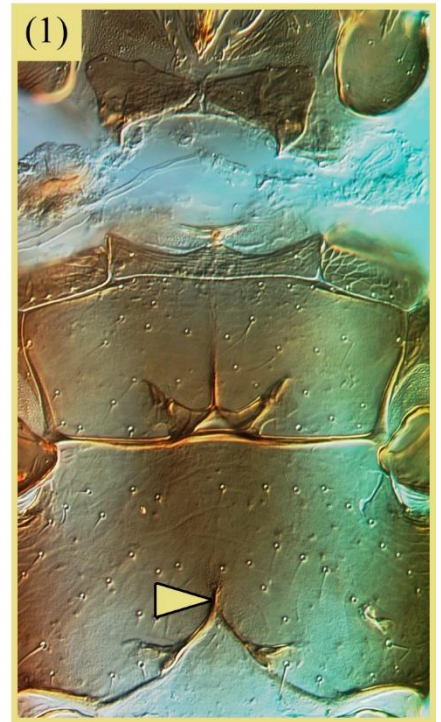
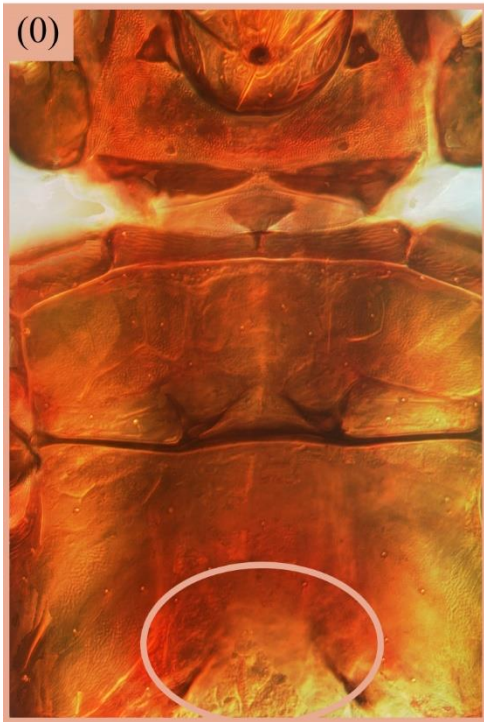
- (0) sculpture close to or reaching posterior margin of craspedum
- (1) sculpture distant from posterior margin of craspedum

C66	C51	C91	C76	Metasternum, metafurca, anterior spina: (0) absent; (1) present.
-----	-----	-----	-----	--

Metasternum, metafurca, anterior spina:

(0) absent

(1) present

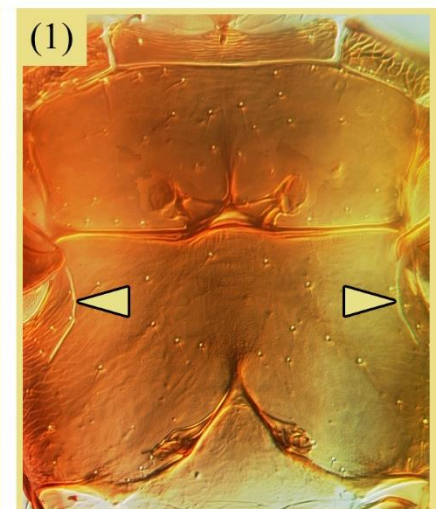
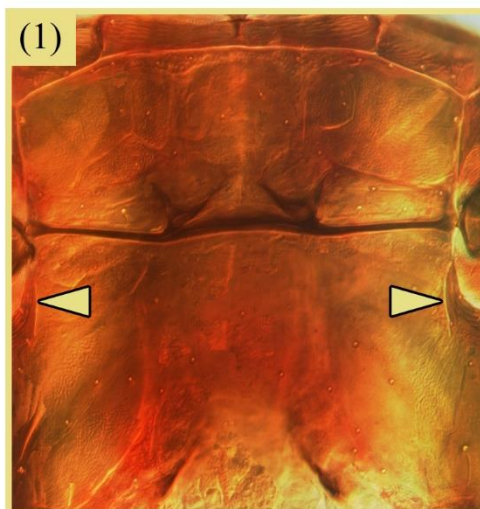
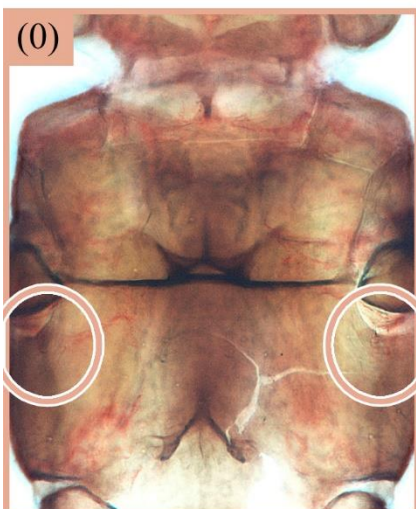


C67	C52	C92	C77	Metasternum, metapleural sutures: (0) absent; (1) present.
-----	-----	-----	-----	--

Metasternum, metapleural sutures:

(0) absent

(1) present



-	C53	-	C78	Abdomen, pelta, shape: (0) triangular, with all sides straight and subequal in length; (1) arcuate, with anterolateral margins rounded; (2) “gaussian-curve” shape, with anterolateral margins sinuous and wide base; (3) bell-shaped (constrict medially and with large basal wings) ; (4) oval (longer than wide); (5) transversal (much wider than long).
---	-----	---	-----	--

Abdomen, pelta, shape:

- (0) triangular

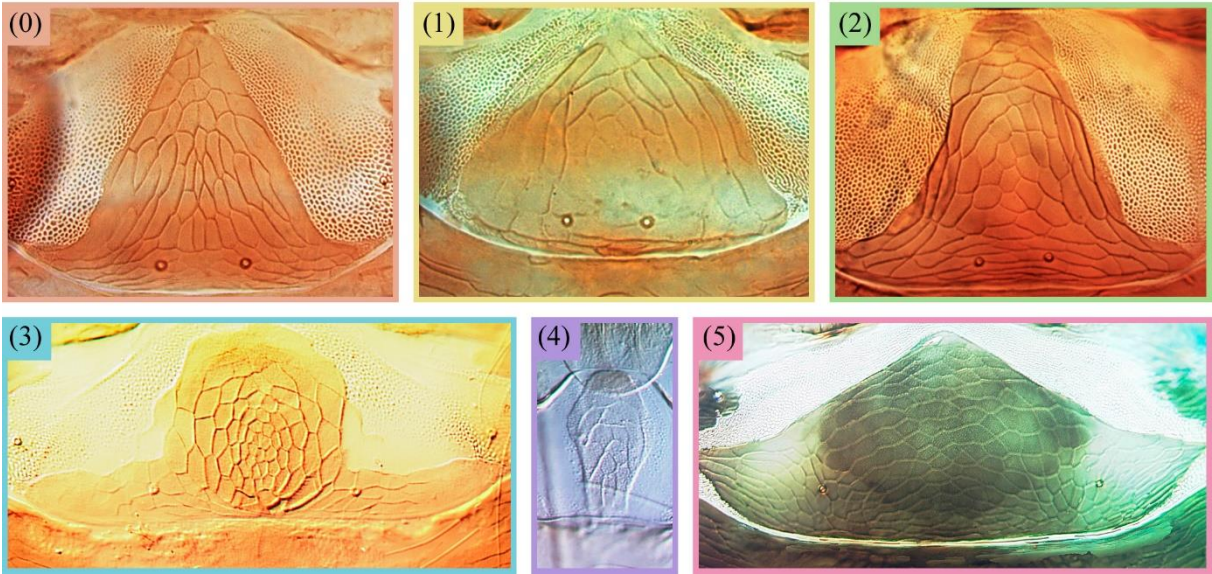
(1) arcuate

(2) “gaussian-curve” shape

(3) bell-shaped

(4) oval

(5) transversal



C68	-	C93	-	Abdomen, pelta, shape: (0) triangular (all sides subequal in length); (1) bell-shaped (constrict medially and with lateral wings basally); (2) oval (longer than wide, no median constriction nor lateral wings basally); (3) transversal (much wider than long).
-----	---	-----	---	---

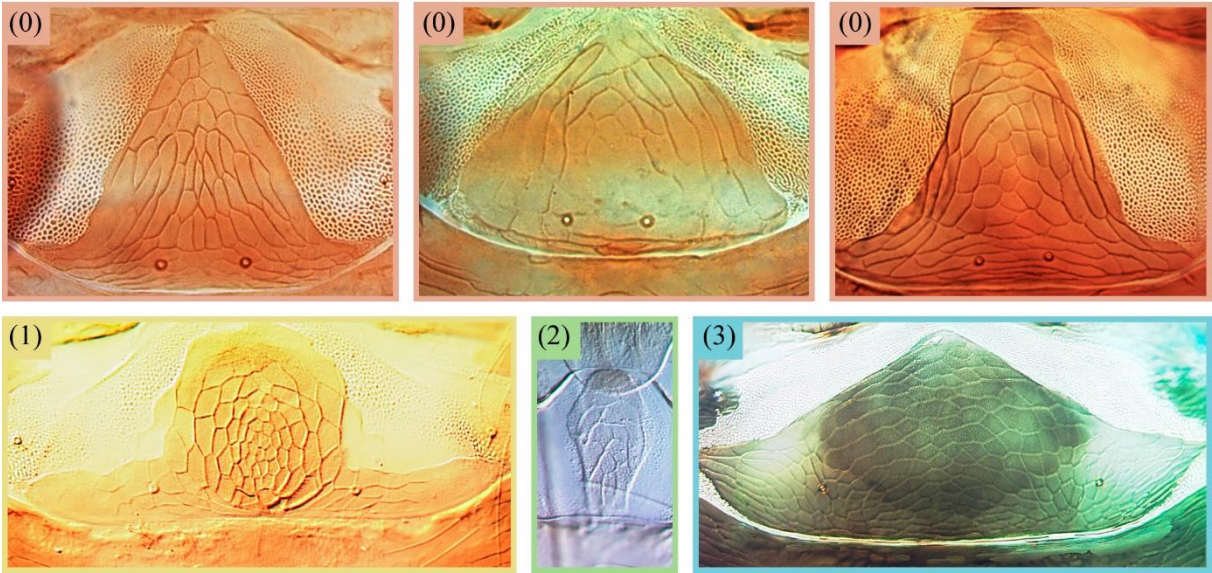
Abdomen, pelta, shape:

- (0) triangular

(1) bell-shaped

(2) oval

(3) transversal

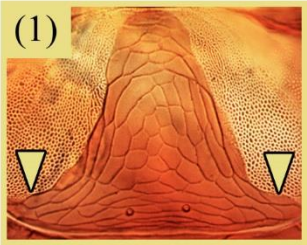
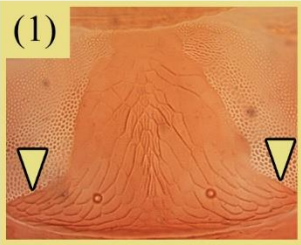
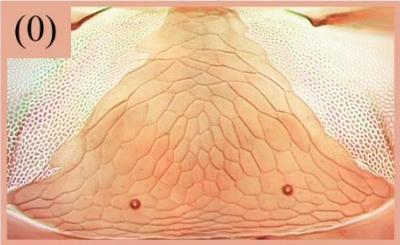
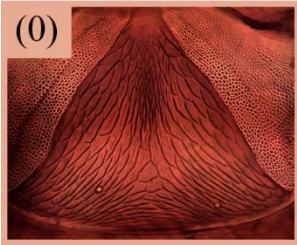


C69	-	C94	-	Abdomen, pelta, lateral wings on triangular-shaped pelta: (0) absent; (1) present; (-) not applicable.
-----	---	-----	---	--

Abdomen, pelta, lateral wings on triangular-shaped pelta:

(0) absent

(1) present



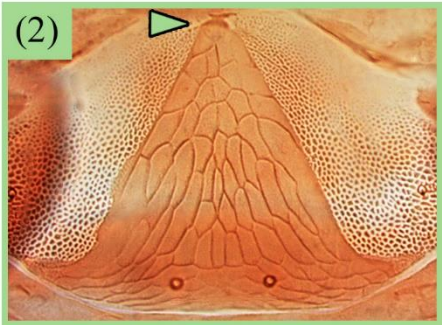
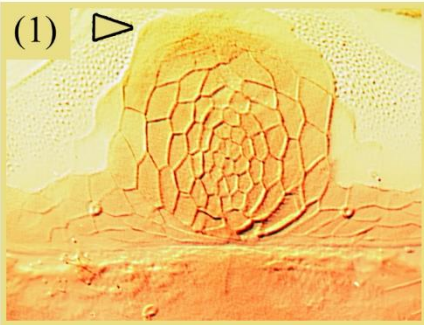
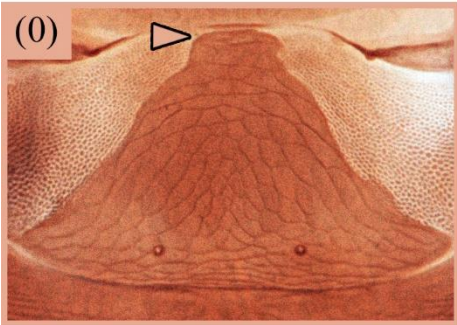
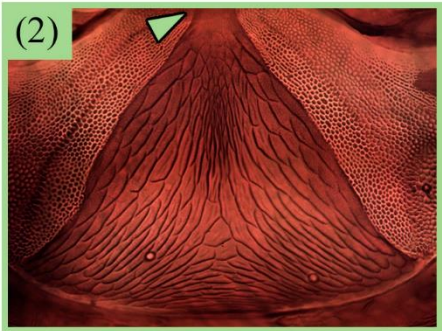
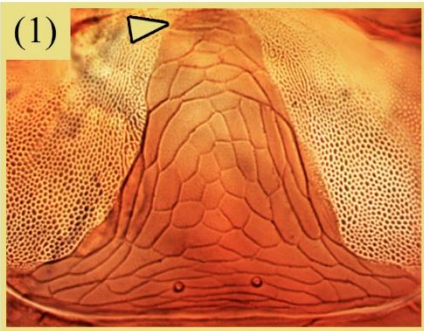
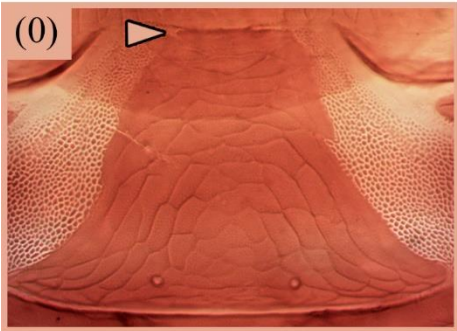
C70	-	C95	-	Abdomen, pelta, anterior margin shape: (0) straight; (1) rounded; (2) acute.
-----	---	-----	---	--

Abdomen, pelta, anterior margin shape:

(0) straight

(1) rounded

(2) acute

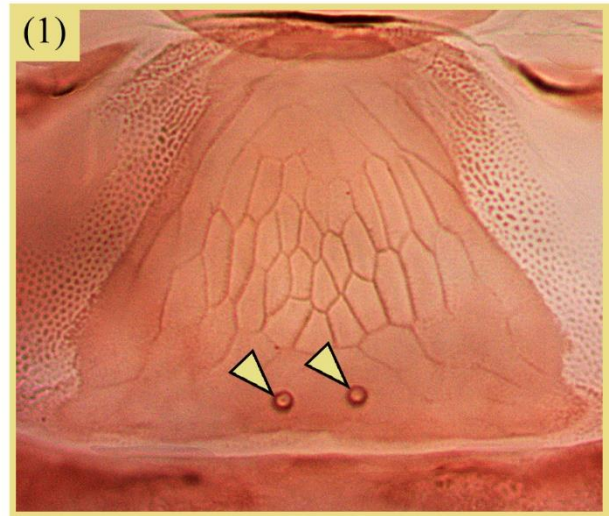
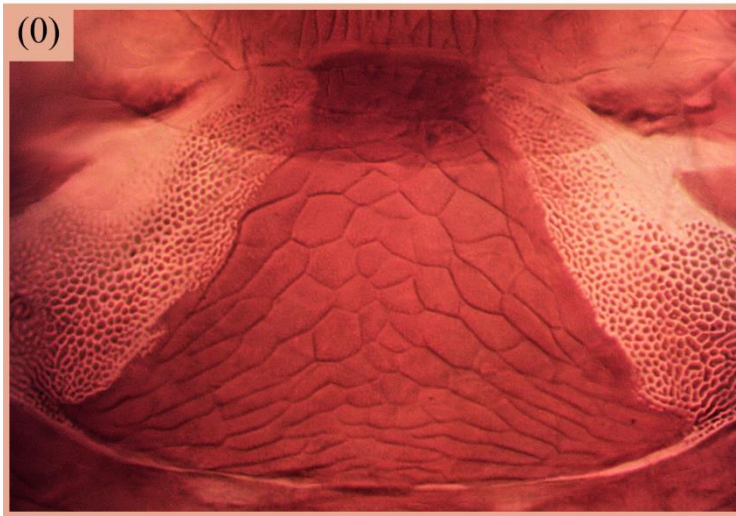


C71	C54	C96	C79	Abdomen, pelta, campaniform sensilla: (0) absent; (1) present.
-----	-----	-----	-----	--

Abdomen, pelta, campaniform sensilla:

(0) absent

(1) present



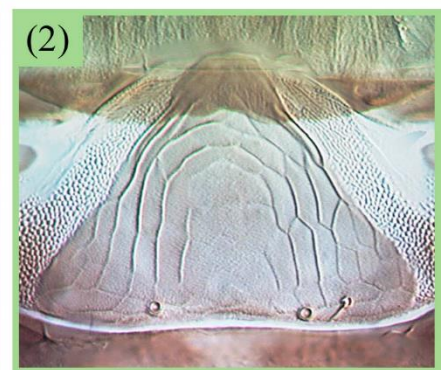
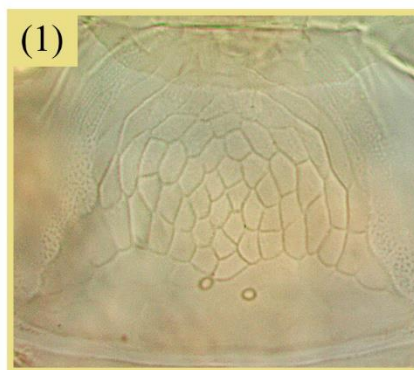
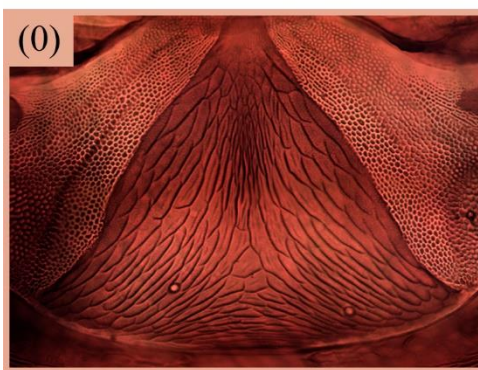
C72	C55	C97	C80	Abdomen, pelta, area of occupation of sculpture: (0) covering the whole pelta; (1) present medially and/or anteriorly, but weak or absent posteriorly; (2) present on the margins, but weak or absent medially.
-----	-----	-----	-----	---

Abdomen, pelta, area of occupation of sculpture:

(0) covering the whole pelta

(1) present medially and/or anteriorly, but weak or absent posteriorly

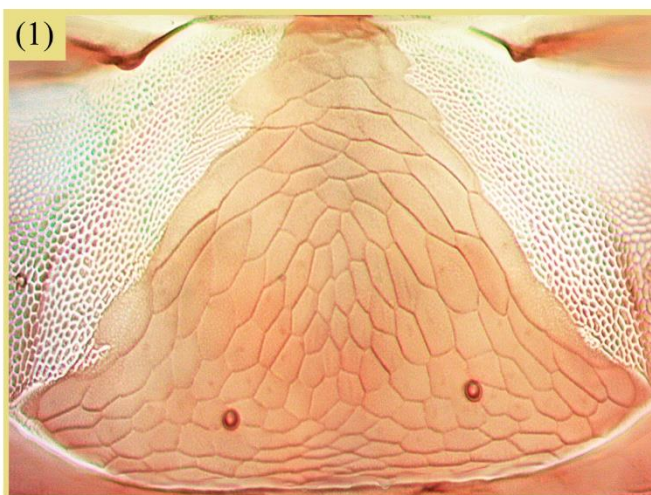
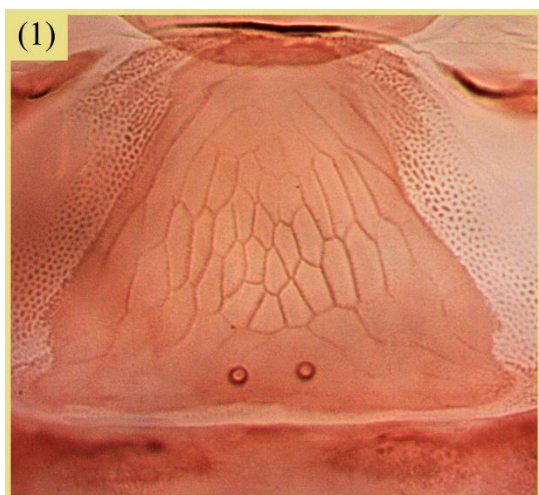
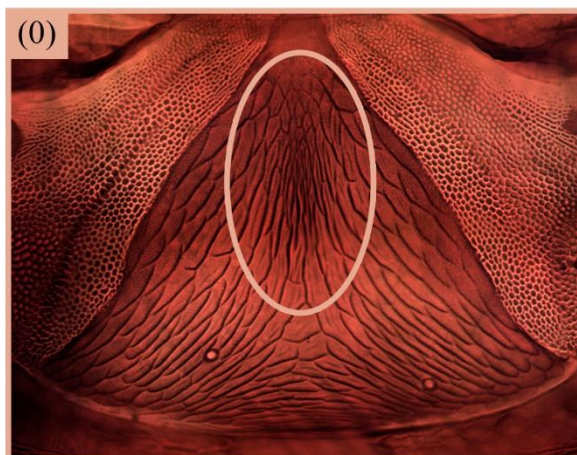
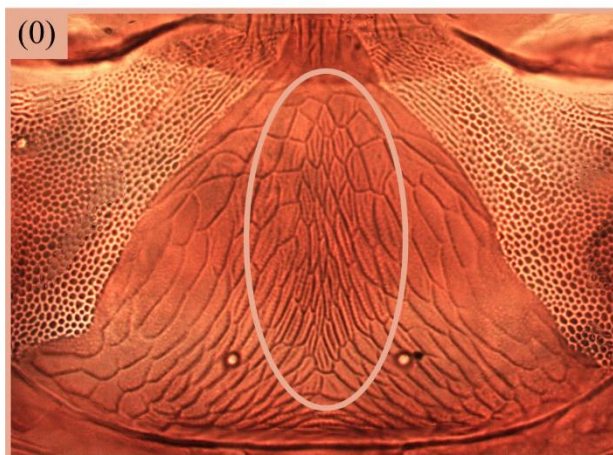
(2) present on the margins, but weak or absent medially



C73	C56	C98	C81	Abdomen, pelta, sculpture, shape of median reticles: (0) longitudinally elongated and smaller in relation to marginal reticles; (1) not longitudinally elongated, similar to marginal reticles.
-----	-----	-----	-----	---

Abdomen, pelta, sculpture, shape of median reticles:

- (0) longitudinally elongated and smaller in relation to marginal reticles
 (1) not longitudinally elongated, similar to marginal reticles

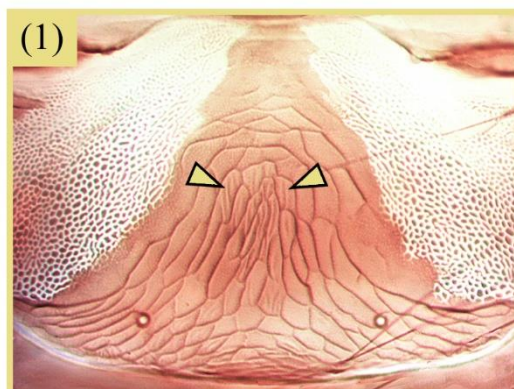
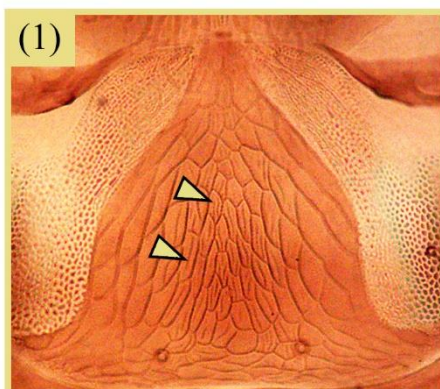
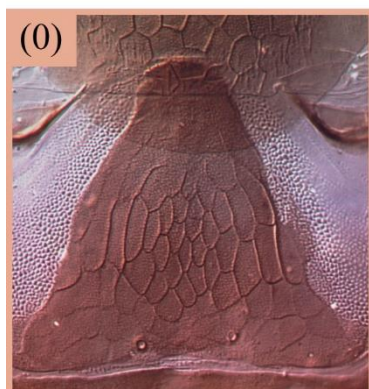


C74	C57	C99	C82	Abdomen, pelta, internal markings on sculpture: (0) absent; (1) present.
-----	-----	-----	-----	--

Abdomen, pelta, internal markings on sculpture:

(0) absent

(1) present

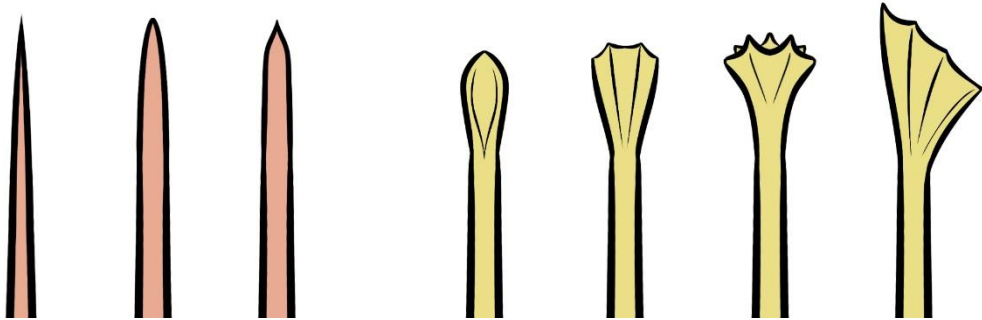


C75	C58	C100	C83	Abdominal tergite II, major posteroangular setae, shape of apex: (0) acute to blunt; (1) expanded to capitate.
-----	-----	------	-----	--

Setae, shape of apex:

(0) acute to blunt

(1) expanded to capitate

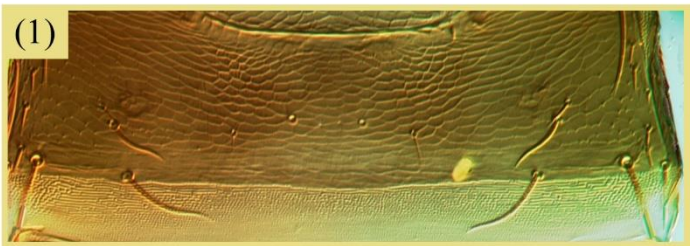


C76	C59	C101	C84	Abdominal tergite II, median area, sculpture: (0) absent; (1) present.
-----	-----	------	-----	--

Abdominal tergite II, median area, sculpture:

(0) absent

(1) present

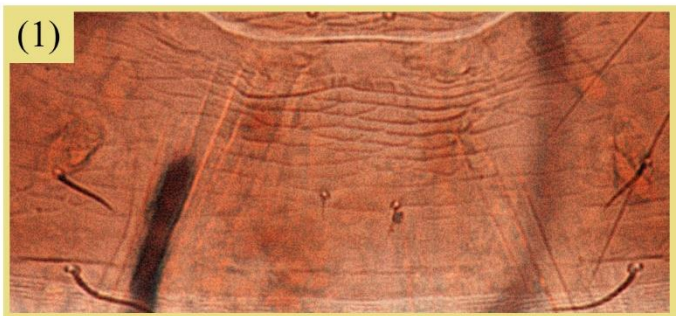
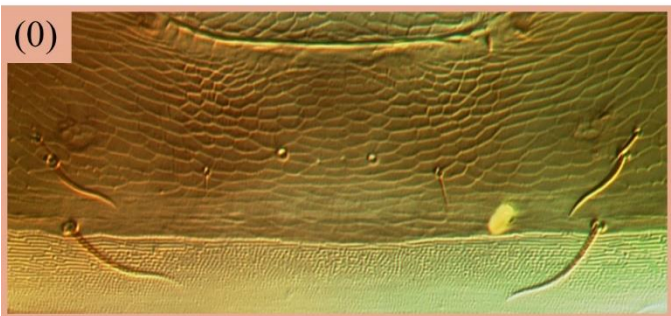


C77	C60	C102	C85	Abdominal tergite II, median area, type of sculpture: (0) reticulated, with equiangular or irregular reticles; (1) transverse lines; (-) not applicable.
C78	-	C103	-	Tergite II, sculpture, internal markings: (0) absent; (1) present.

Abdominal tergite II, median area, type of sculpture:

(0) reticulated, with equiangular or irregular reticles

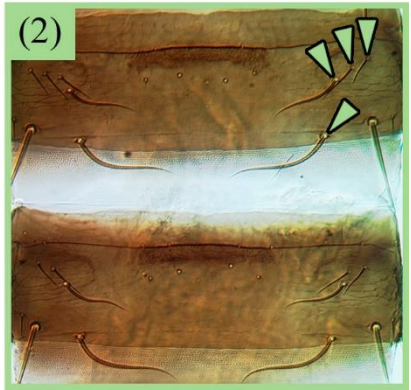
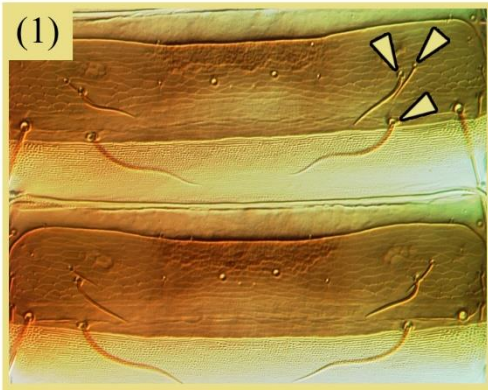
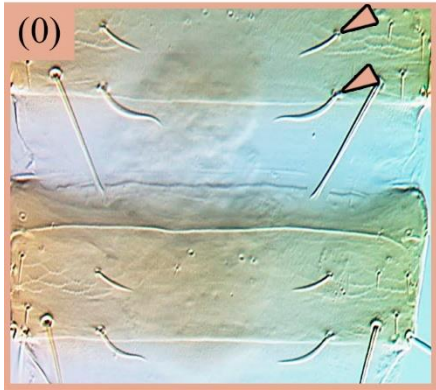
(1) transverse lines



C79	C61	C104	C86	Abdominal tergites II-VII, wing-retaining setae, number: (0) two or less pairs; (1) three pairs; (2) four or more pairs
-----	-----	------	-----	---

Abdominal tergites II-VII, wing-retaining setae, number:

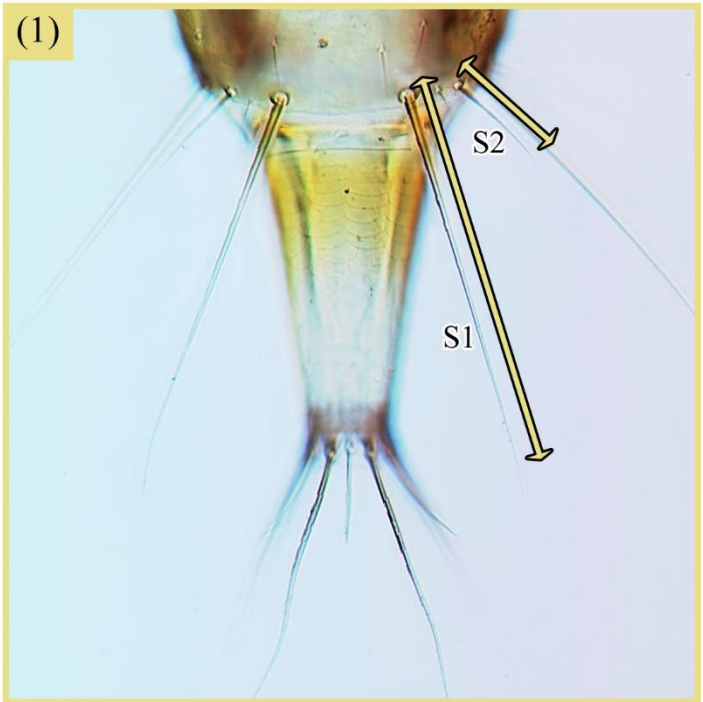
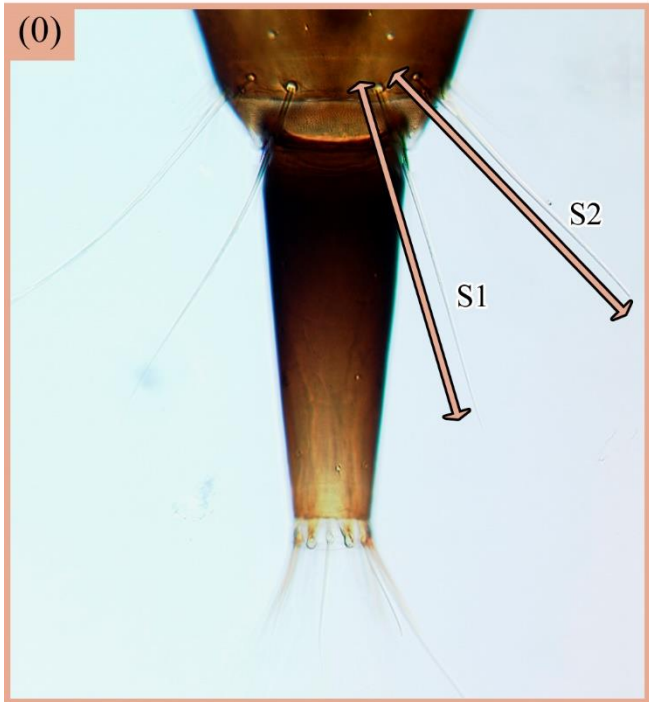
(0) two or less pairs (1) three pairs (2) four or more pairs



C80	C62	C105	C87	Abdominal tergite IX, setae S2, length in males: (0) similar or longer than setae S1; (1) distinctly shorter than setae S1; (-) not applicable.
C81	C63	C106	C88	Abdominal tergite IX, setae S3, length in males: (0) similar or longer than setae S1; (1) distinctly shorter than setae S1; (-) not applicable.

Abdominal tergite IX, setae S2/S3, length in males:

(0) similar or longer than setae S1 (1) distinctly shorter than setae S1



C82	C64	C107	C89	Abdominal tergite IX, setae S1, shape of apex: (0) acute to blunt; (1) expanded to capitate.
C83	C65	C108	C90	Abdominal tergite IX, setae S2, shape of apex: (0) acute to blunt; (1) expanded to capitate.

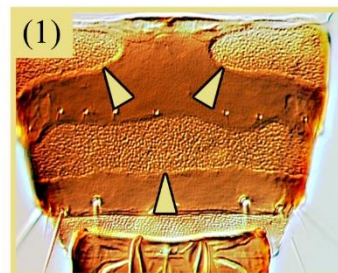
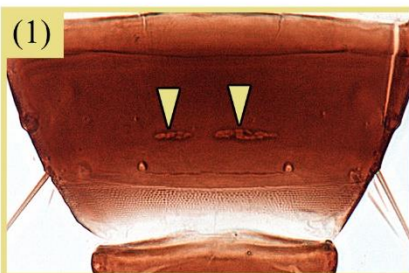
C84	C66	C109	C91	Abdominal sternite VIII, male pore plate: (0) absent; (1) present.
-----	-----	------	-----	--

Abdominal sternite VIII, male pore plate:

(0) absent



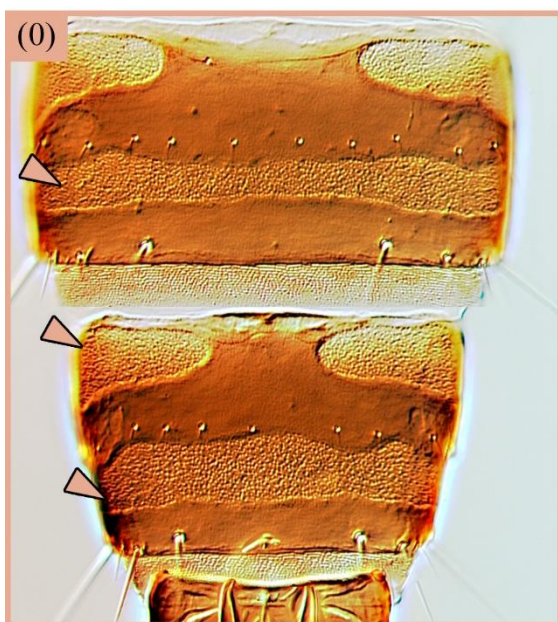
(1) present



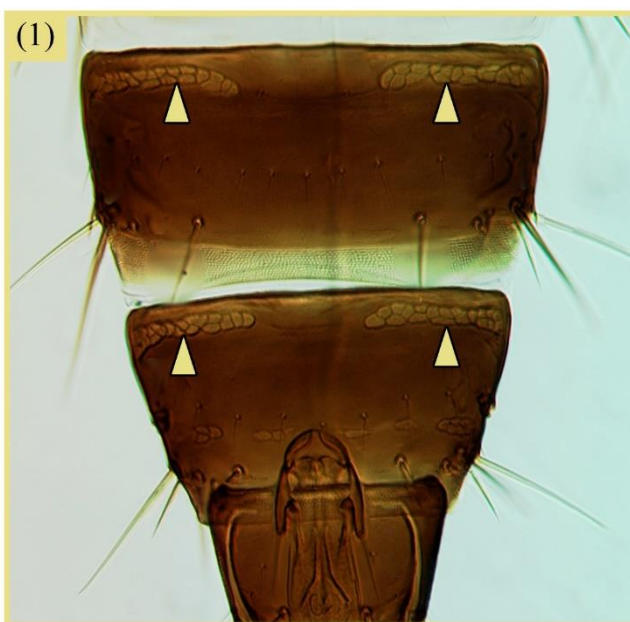
-	C67	-	C92	Abdominal sternite VIII, pore plate(s), reticulate texture: (0) absent; (1) present.
C85	-	C110	-	Sternites, male pore plates, gland texture: (0) punctuated; (1) reticulated; (-) not applicable.

Sternites, male pore plates, gland texture:

(0) punctuated



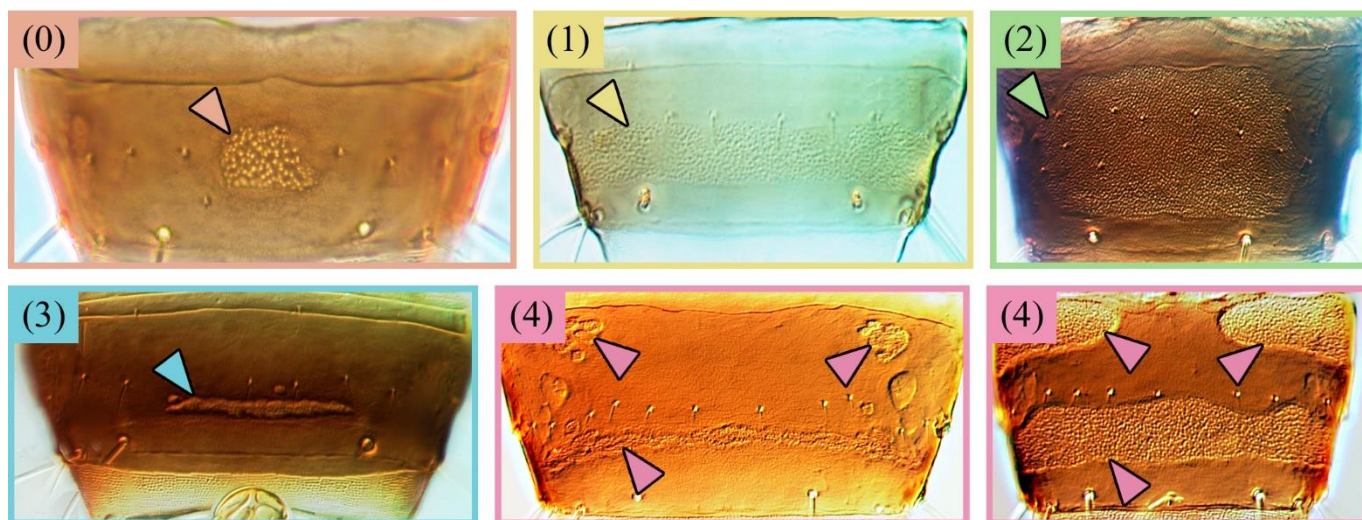
(1) reticulated



C86	C68	C111	C93	Abdominal sternite VIII, male pore plate, appearance: (0) small median circular, oval or irregular pore plate; (1) transverse band reaching the laterals of sternite or close to it, covering from a fourth to a half of sternite length; (2) big pore plate, covering almost or all of sternite length; (3) thin transverse band restricted to median area of sternite, always posterior to the row of discal setae, less than a fourth of sternite length; (4) three separate plates: two anteroangular and one transverse band posterior to discal setae, which might be interrupted medially or not; (-) not applicable.
-----	-----	------	-----	--

Abdominal sternite VIII, male pore plate, appearance:

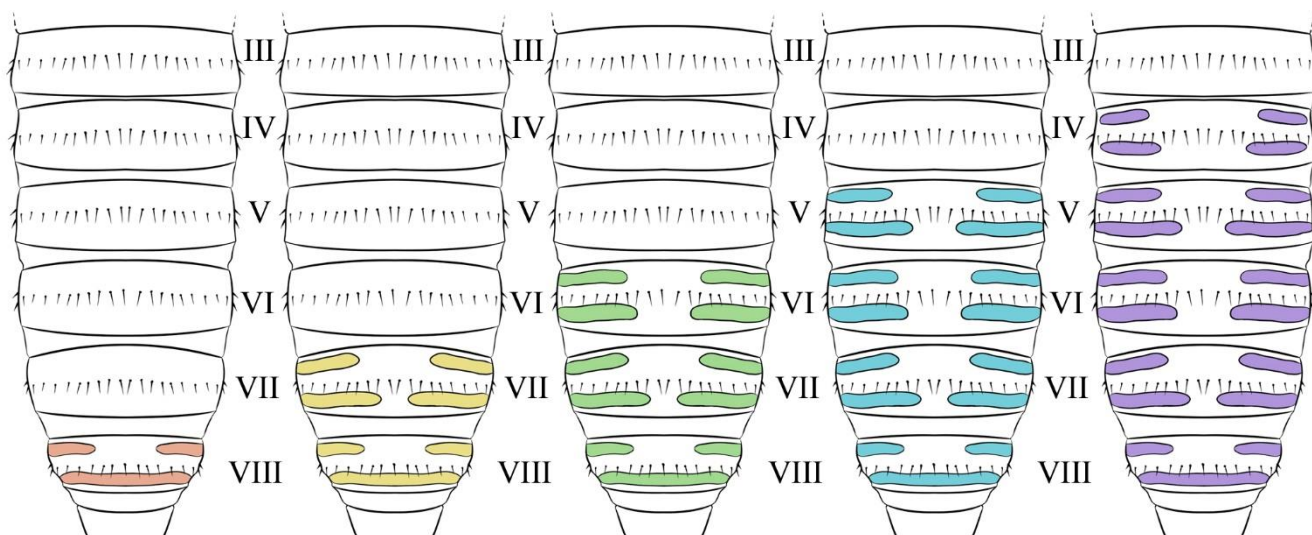
- (0) circular, oval or irregular plate medially (1) wide transverse band
 (2) plate covering almost or all the sternite (3) thin transverse band
 (4) two anteroangular bands and one transverse band



C87	C69	C112	C94	Abdominal sternites, occurrence of male pore plates: (0) VIII; (1) VIII-VII; (2) VIII-VI; (3) VIII-V; (4) VIII-IV; (-) not applicable.
-----	-----	------	-----	--

Abdominal sternites, occurrence of male pore plates:

- (0) VIII (1) VIII-VII (2) VIII-VI (3) VIII-V (4) VIII-IV

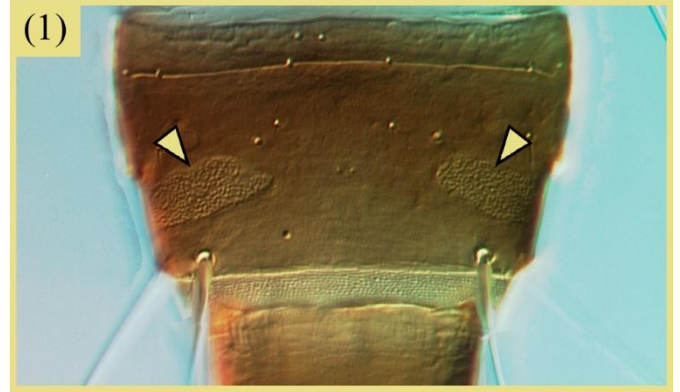
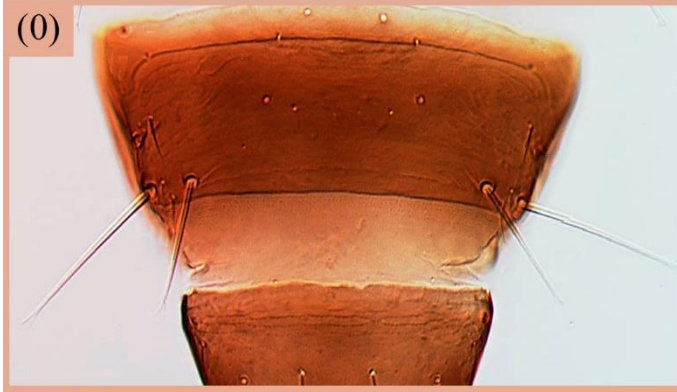


C88	C70	C113	C95	Abdominal tergite VIII, male pore plate: (0) absent; (1) present.
-----	-----	------	-----	---

Abdominal tergite VIII, male pore plate:

(0) absent

(1) present

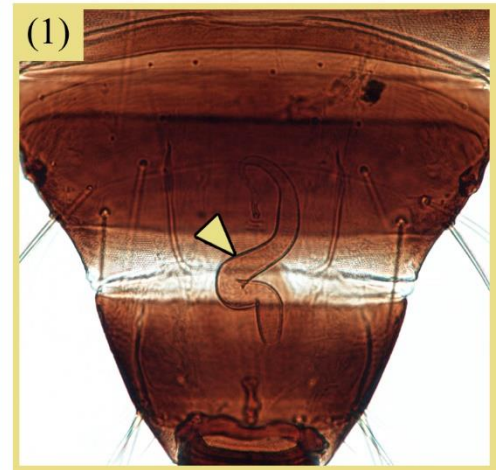
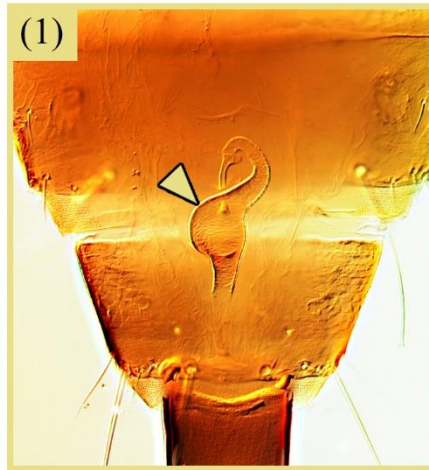
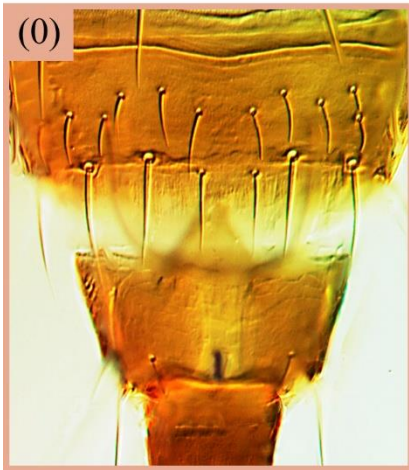


C89	C71	C114	C96	Abdominal segment IX, visible female spermatheca: (0) absent; (1) present.
-----	-----	------	-----	--

Abdominal segment IX, visible female spermatheca:

(0) absent

(1) present



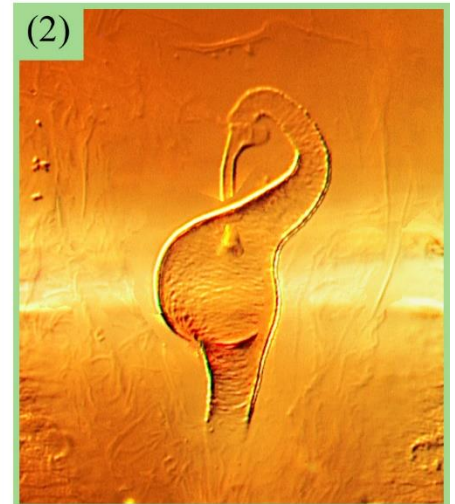
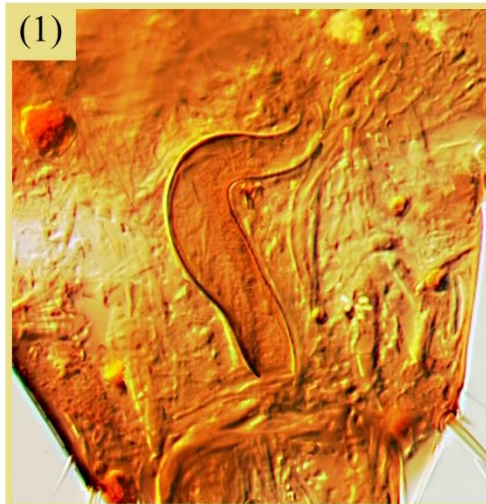
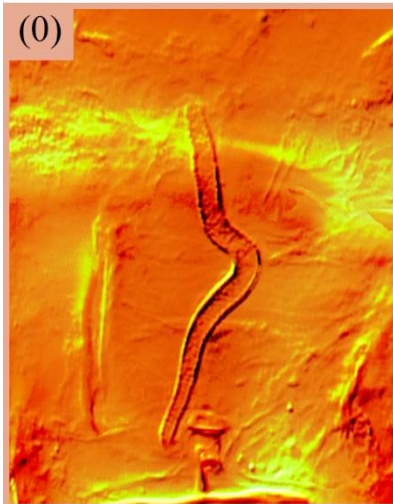
C90	C72	C115	C97	Abdominal segment IX, female spermatheca, shape: (0) slender (up to 12.5 micrometers of diameter); (1) thickened (more than 15 micrometers of diameter, but not swollen) (2) swollen medially (-) Not applicable.
-----	-----	------	-----	---

Abdominal segment IX, female spermatheca, shape:

(0) slender

(1) thickened

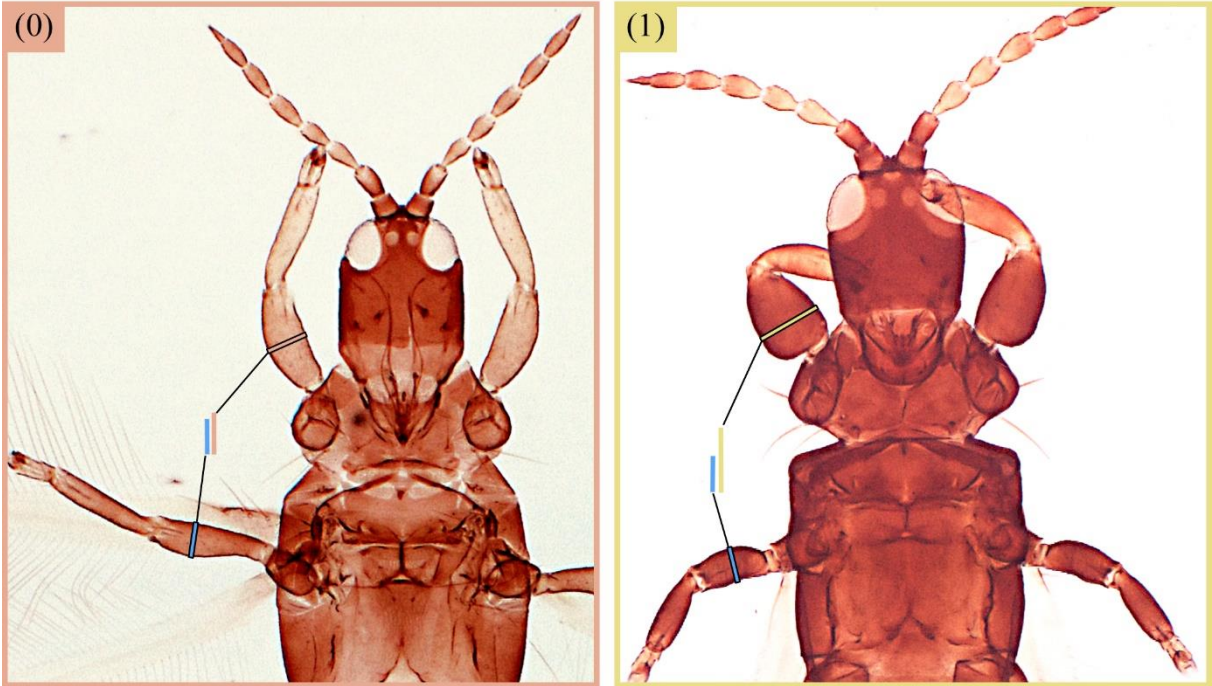
(2) swollen medially



C91	C73	C116	C98	Fore legs, femur, maximum width in relation to mid femur's maximum width (females): (0) at most 1.5x larger; (1) more than 1.5x larger.
C92	C74	C117	C99	Fore legs, femur, maximum width in relation to mid femur's maximum width (males): (0) at most 1.5x larger; (1) more than 1.5x larger.

Fore legs, femur, maximum width in relation to mid femur's maximum width:

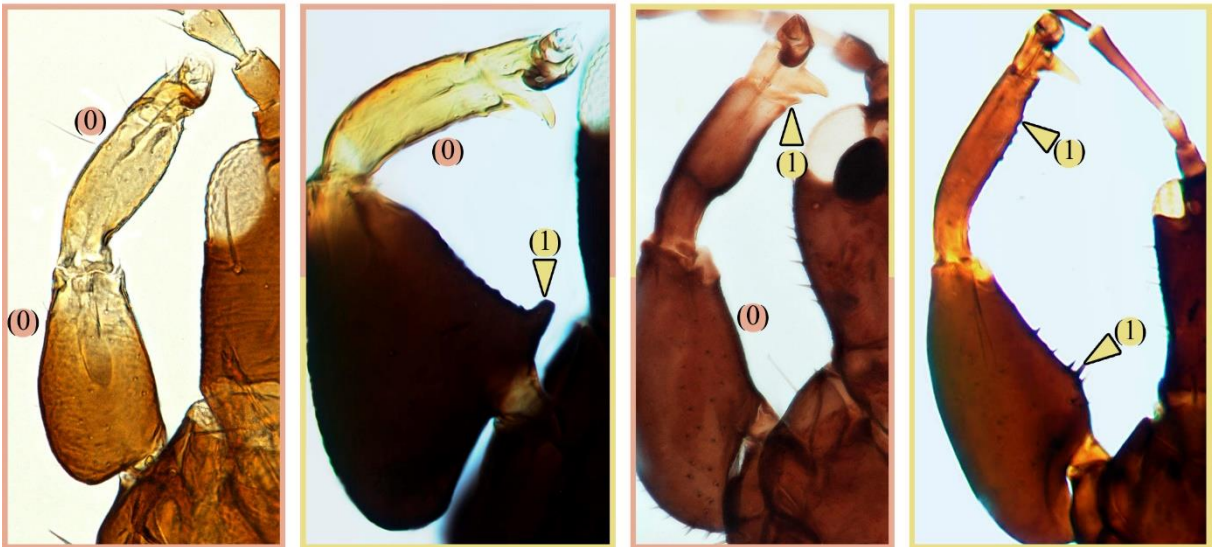
(0) at most 1.5x larger (1) more than 1.5x larger



C93	C75	C118	C100	Fore legs, femur, tubercle: (0) absent; (1) present.
C94	C76	C119	C101	Fore legs, tibia, tubercle: (0) absent; (1) present.

Fore legs, femur/tibia, tubercle:

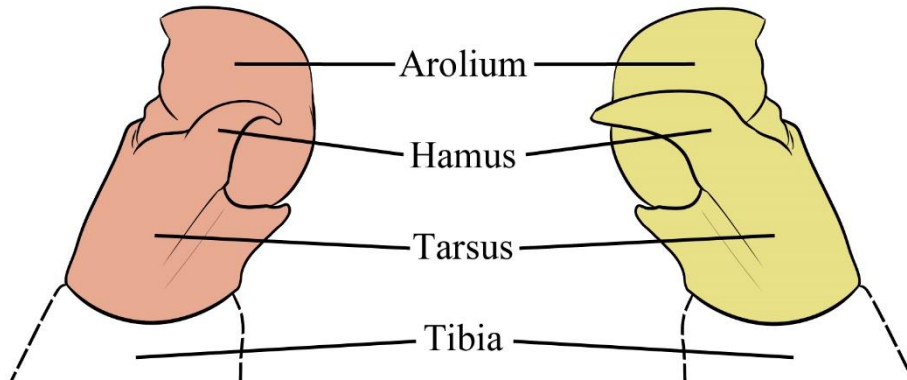
(0) absent (1) present



C95	C77	C120	C102	Fore legs, ventral hamus, size: (0) small and thin, not strongly projected laterally; (1) large and thick, strongly projecting to the side.
-----	-----	------	------	---

Fore legs, ventral hamus, size:

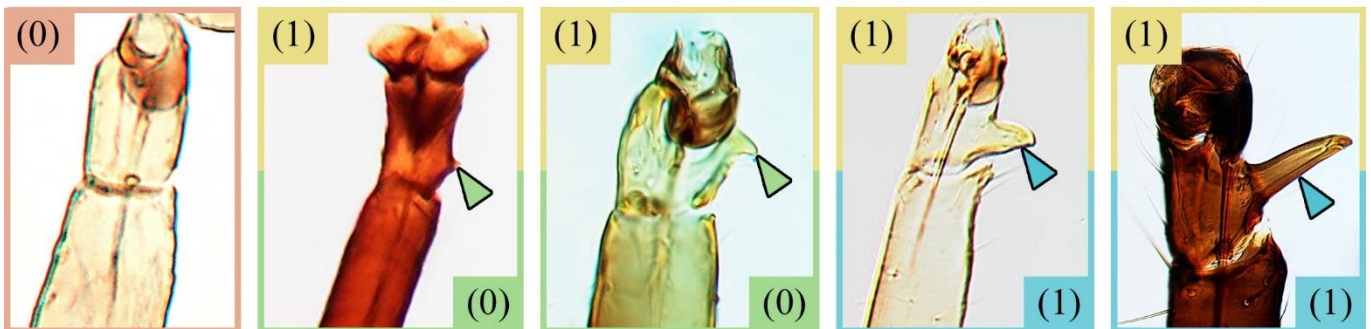
(0) small and thin (1) large and thick, projecting to the side



C96	C78	C121	C103	Fore legs, tarsal tooth in females: (0) absent; (1) present.
C97	C79	C122	C104	Fore legs, tarsal tooth in females, size: (0) small (length equal or less than half of basal width of tarsus); (1) enlarged (length more than half of basal width of tarsus).
C98	C80	C123	C105	Fore legs, tarsal tooth in males: (0) absent; (1) present.
C99	C81	C124	C106	Fore legs, tarsal tooth in males, size: (0) small (length equal or less than half of basal width of tarsus); (1) enlarged (length more than half of basal width of tarsus).

Fore legs, tarsal tooth:

(0) absent (1) present



Fore legs, tarsal tooth, size:

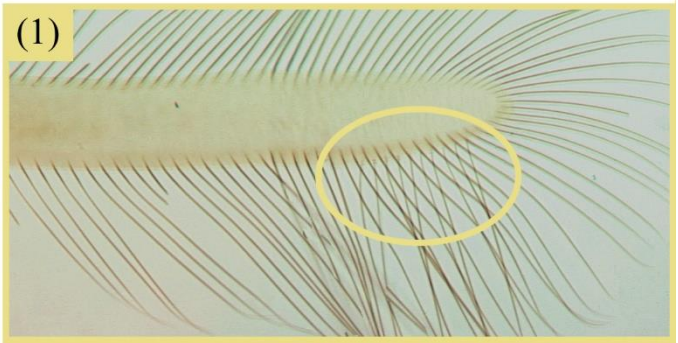
(0) small (length equal or less than half of basal width of tarsus)
(1) enlarged (length more than half of basal width of tarsus)

C100	C82	C125	C107	Fore wings, duplicated cilia: (0) absent; (1) present.
------	-----	------	------	--

Fore wings, duplicated cilia:

(0) absent

(1) present

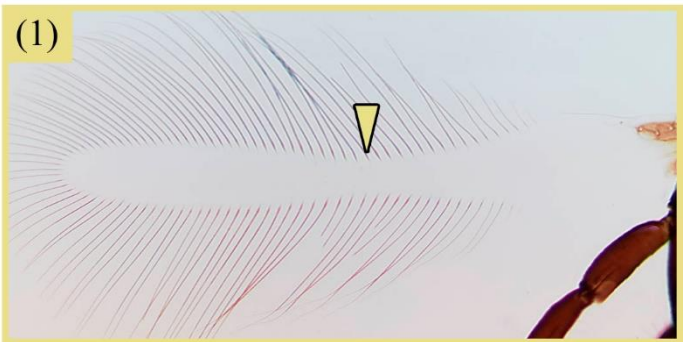
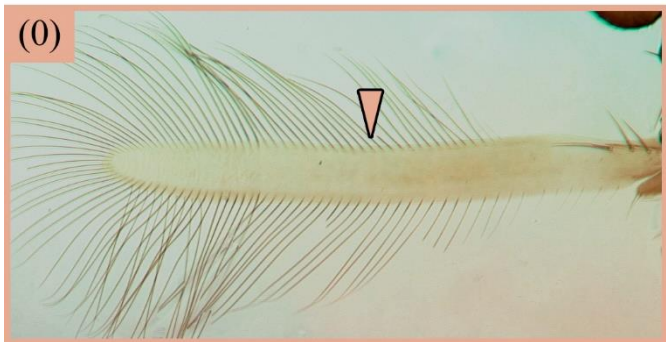


C101	C83	C126	C108	Fore wings, margins, shape: (0) parallel-sided; (1) constricted medially.
------	-----	------	------	---

Fore wings, margins, shape:

(0) parallel-sided

(1) constricted medially

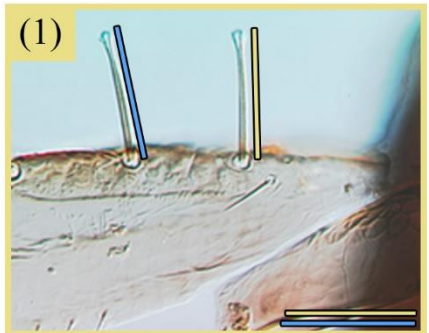
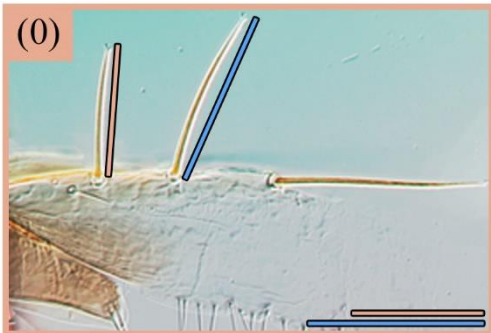
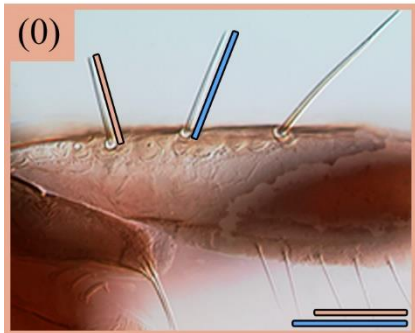


C102	-	C127	-	Fore wings, first pair of basal setae, size in relation to second pair: (0) shorter than pair 2; (1) sub equal or longer than pair 2; (-) not applicable.
------	---	------	---	---

Fore wings, first pair of basal setae, size in relation to second pair:

(0) shorter

(1) subequal or longer

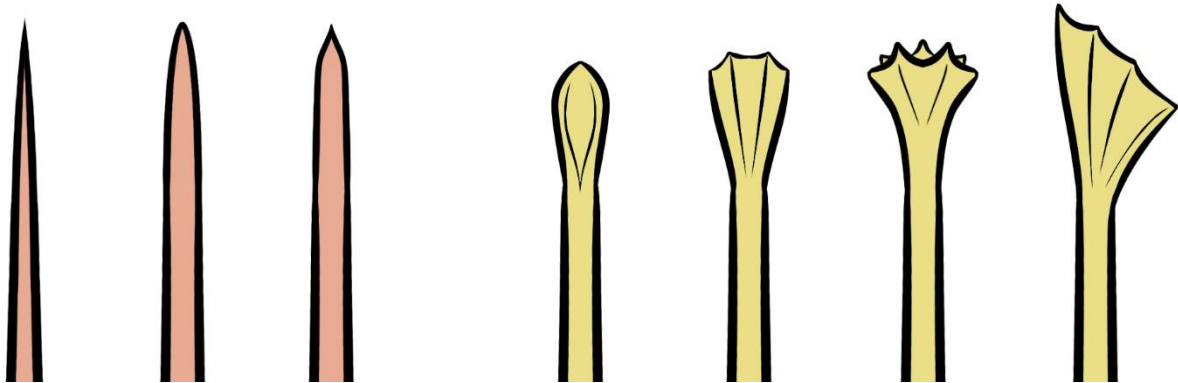


C103	C84	C128	C109	Fore wings, first pair of basal setae, shape of apex: (0) acute to blunt; (1) expanded to capitate.
------	-----	------	------	---

Setae, shape of apex:

(0) acute to blunt

(1) expanded to capitate



C104	C85	C129	C110	Fore wing clavus, sculpture on dorsal surface: (0) absent; (1) present.
------	-----	------	------	---

Fore wing clavus, sculpture on dorsal surface:

(0) absent

(1) present

