

***Zebrus pallaoroi* sp. nov.: A new species of goby (Actinopterygii: Gobiidae) from the Mediterranean Sea with a DNA-based phylogenetic analysis of the *Gobius*-lineage**

Marcelo Kovačić

Natural History Museum Rijeka, Lorenzov prolaz 1, HR–51000 Rijeka, Croatia

marcelo@prirodoslovni.com

Radek Šanda

Department of Zoology, National Museum, Václavské nám. 68, 110 00 Prague, Czech Republic

Katarína Čekovská

Department of Ecology, Faculty of Science, Charles University, Viničná 7, 128 44 Prague, Czech Republic

Tereza Soukupová

Department of Ecology, Faculty of Science, Charles University, Viničná 7, 128 44 Prague, Czech Republic

Jasna Vukić

Department of Ecology, Faculty of Science, Charles University, Viničná 7, 128 44 Prague, Czech Republic

Supplementary material

TABLE S1 Specimens of *Zebrus zebrus*, *Z. pallaoroi* sp. nov., and *Millerigobius macrocephalus* used in the genetic analyses, with details on their origin and haplotypes, and GenBank accession numbers. NMP (National Museum, Prague, Czech Republic), PMR (Natural History Museum, Rijeka, Croatia).

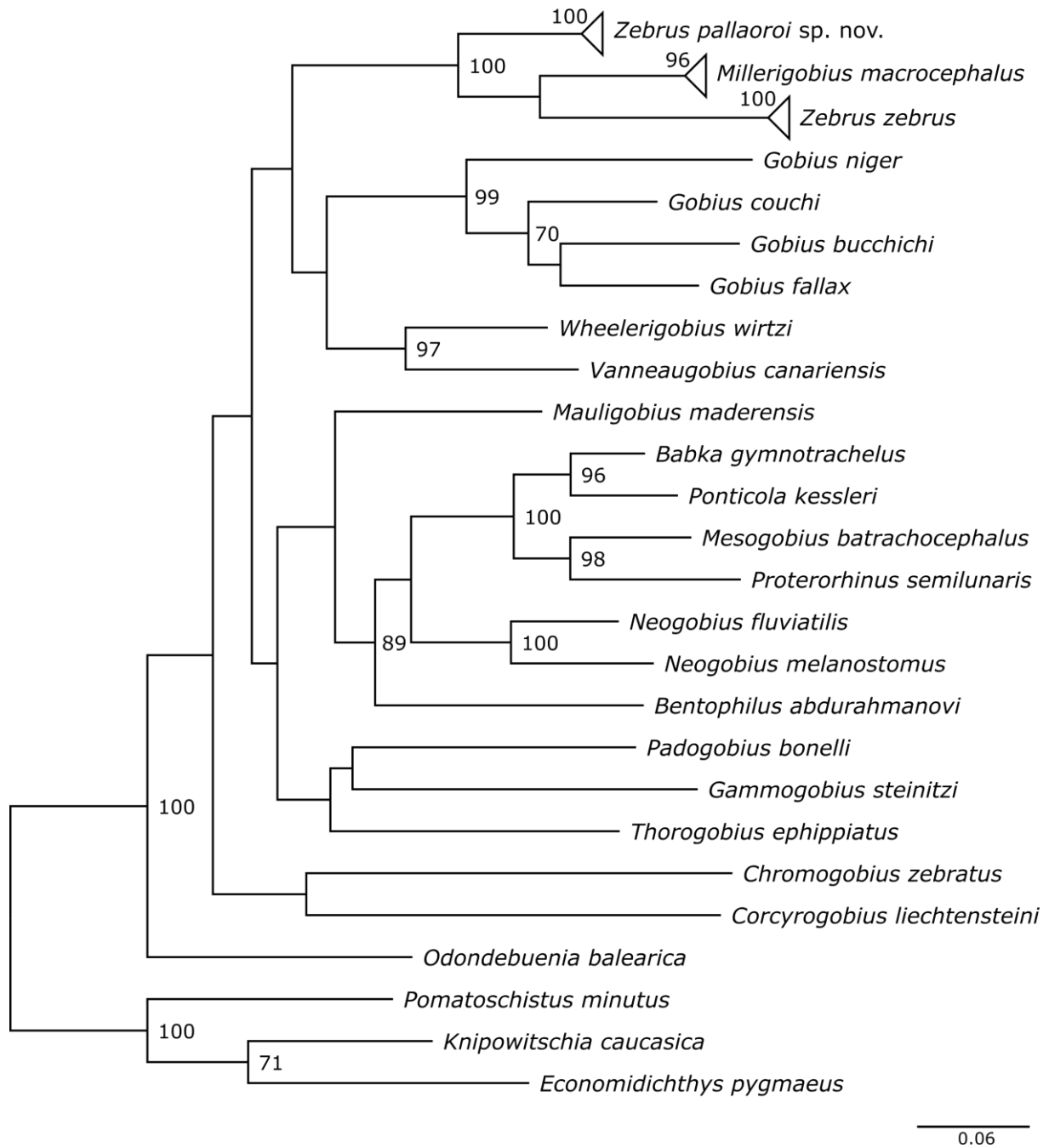


FIGURE S1 RAXML tree estimation of phylogenetic relationships of analysed species from the *Gobius*-lineage *sensu* Agorreta et al. (2013) based on the mitochondrial gene cytochrome b. Numbers on branches are bootstrap values. Only values higher than 70% are shown.



FIGURE S2 RAxML tree estimation of phylogenetic relationships of analysed species from the *Gobius*-lineage *sensu* Agorreta et al. (2013) based on the nuclear gene rhodopsin. Numbers on branches are bootstrap values. Only values higher than 70% are shown.