

Affective Responses to Image Color Combinations

Jan J. Koenderink^{1,2,3,*}, Doris I. Braun¹ and Andrea J. van Doorn^{1,2}

¹Abteilung Allgemeine Psychologie and Center for Mind, Brain and Behavior, Justus Liebig University, Otto-Behaghel-Str. 10F, 35394 Giessen, Germany

²Experimental Psychology, Helmholtz Institute, Utrecht University, Heidelberglaan 1, 3584 CS Utrecht, The Netherlands

³Lab voor Experimentele Psychologie, KU Leuven, Tiensestr 102, Bus 3711, 3000 Leuven, Belgium

Received 17 August 2020; accepted 27 September 2021

Figures 1–51

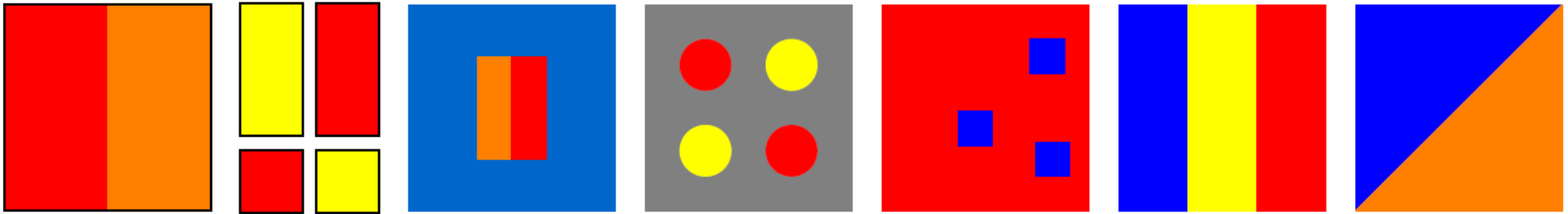


Figure 1

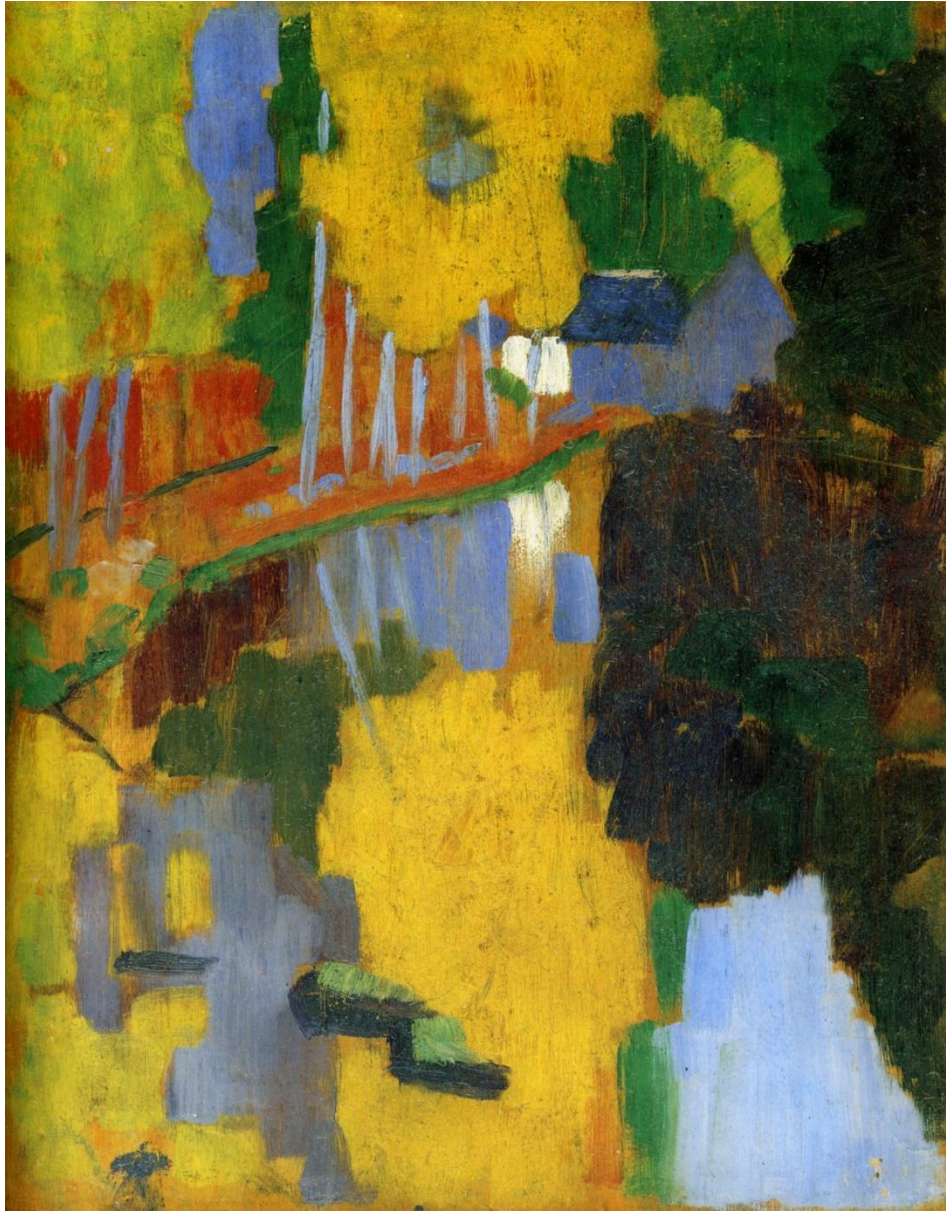


Figure 2

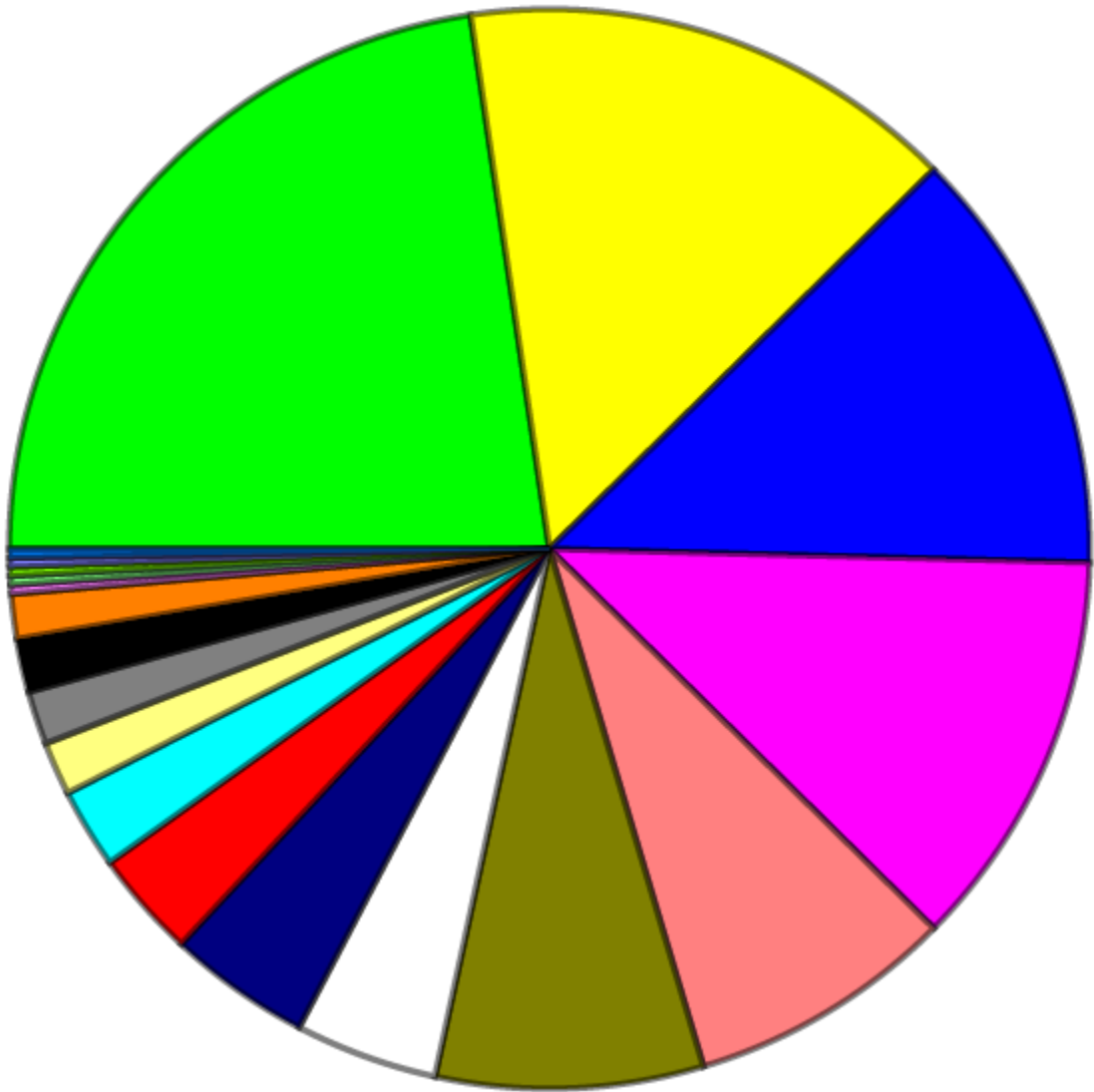
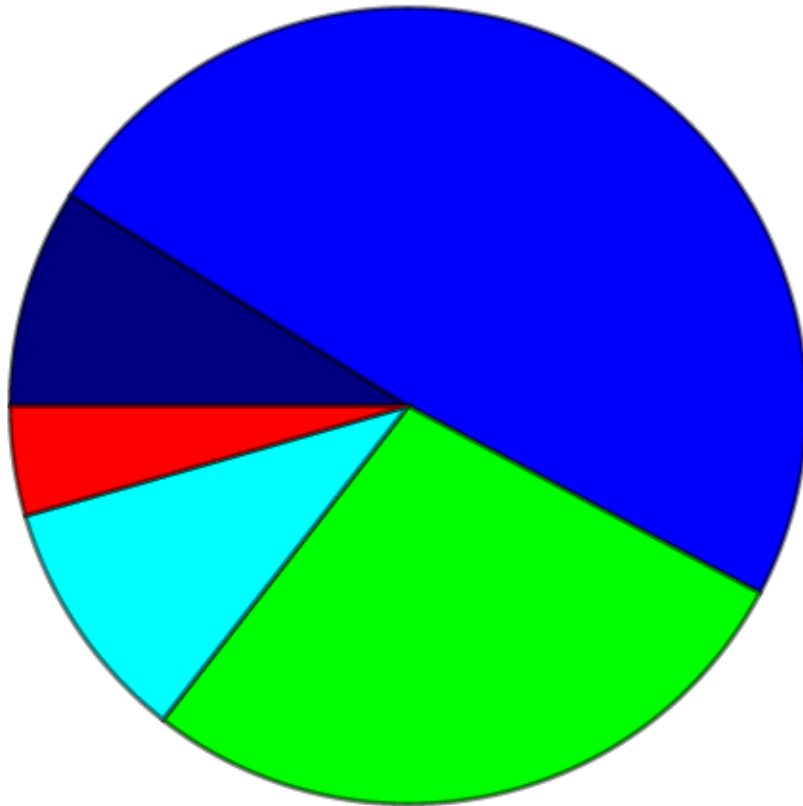


Figure 3

overall

preference



aversion

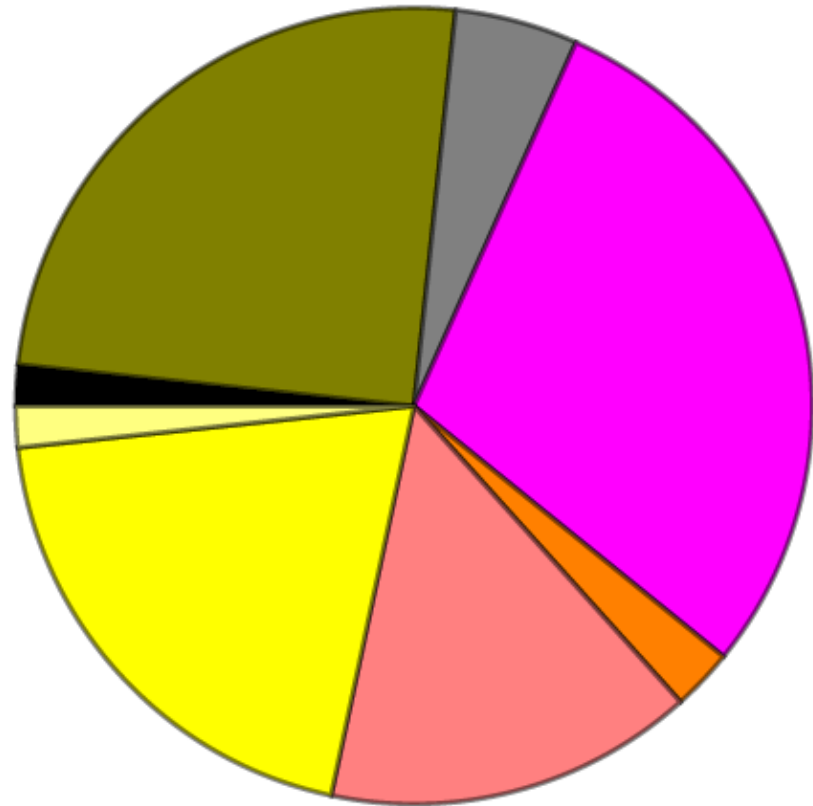


Figure 4

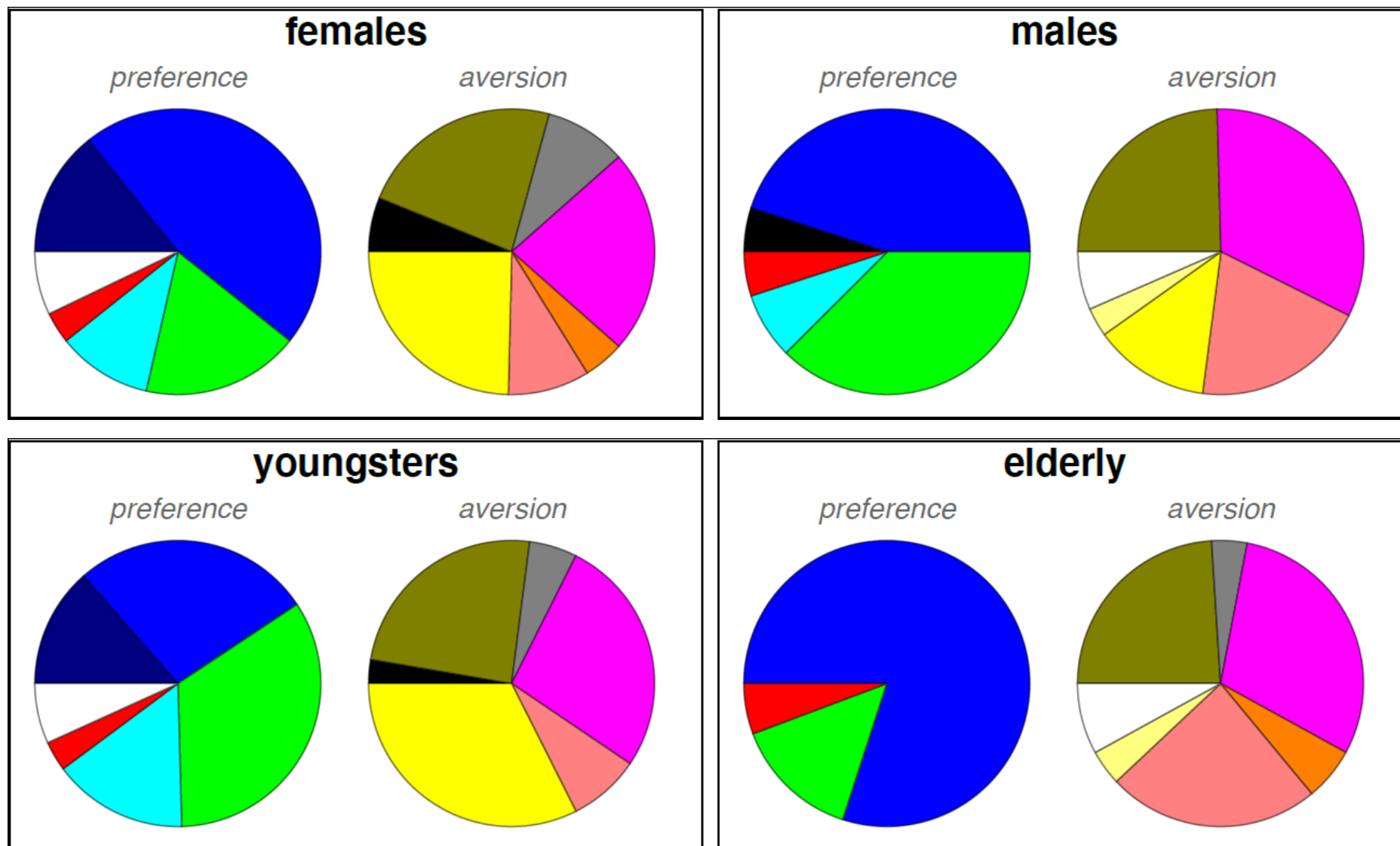


Figure 5

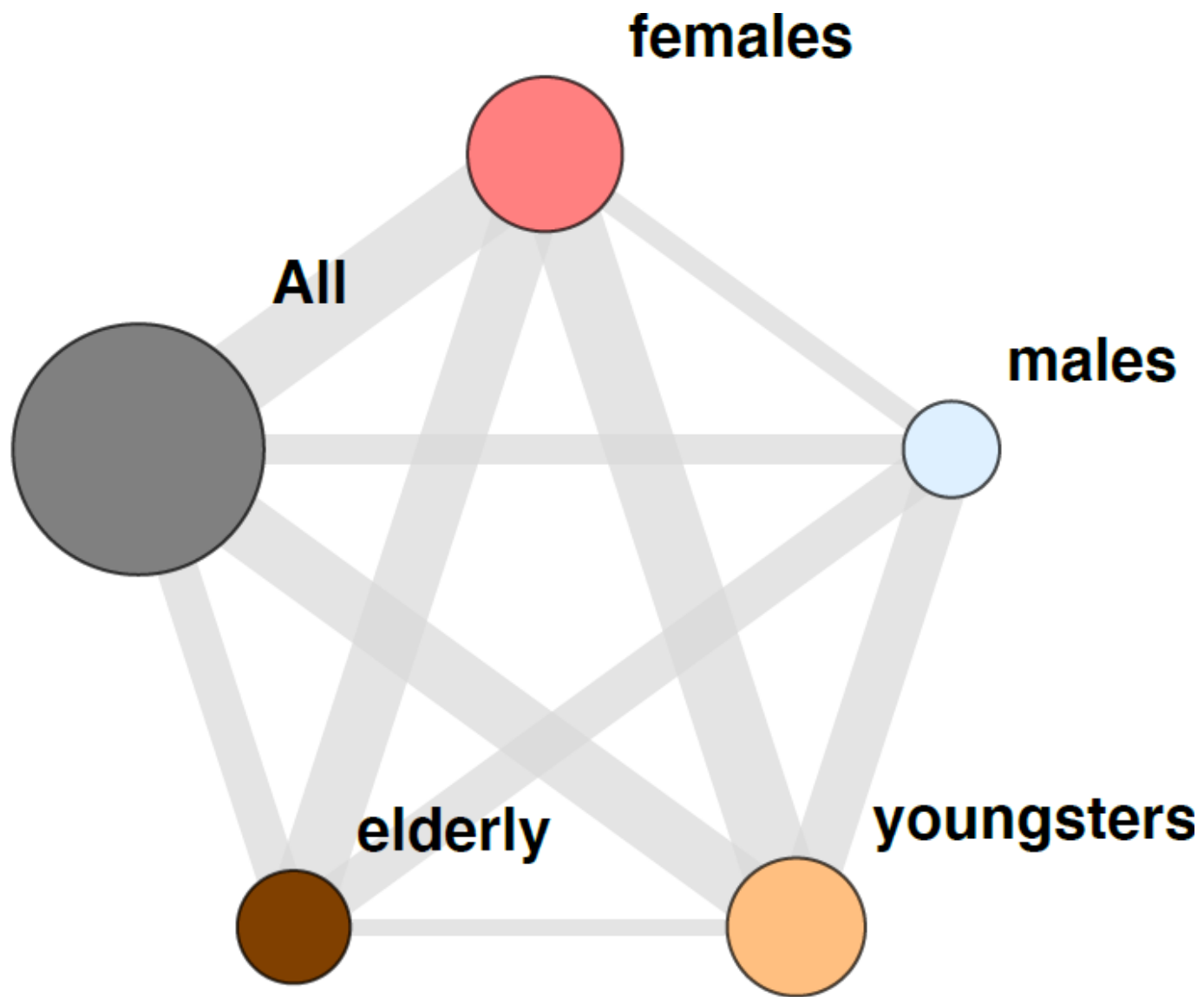


Figure 6

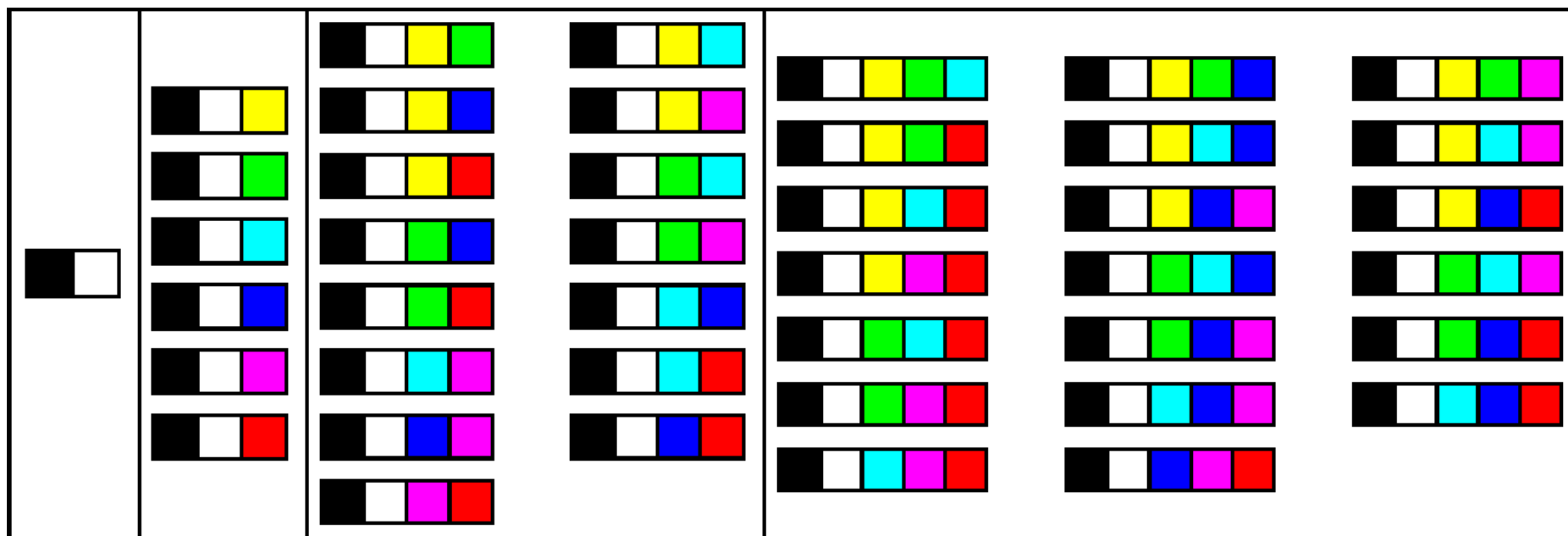


Figure 7

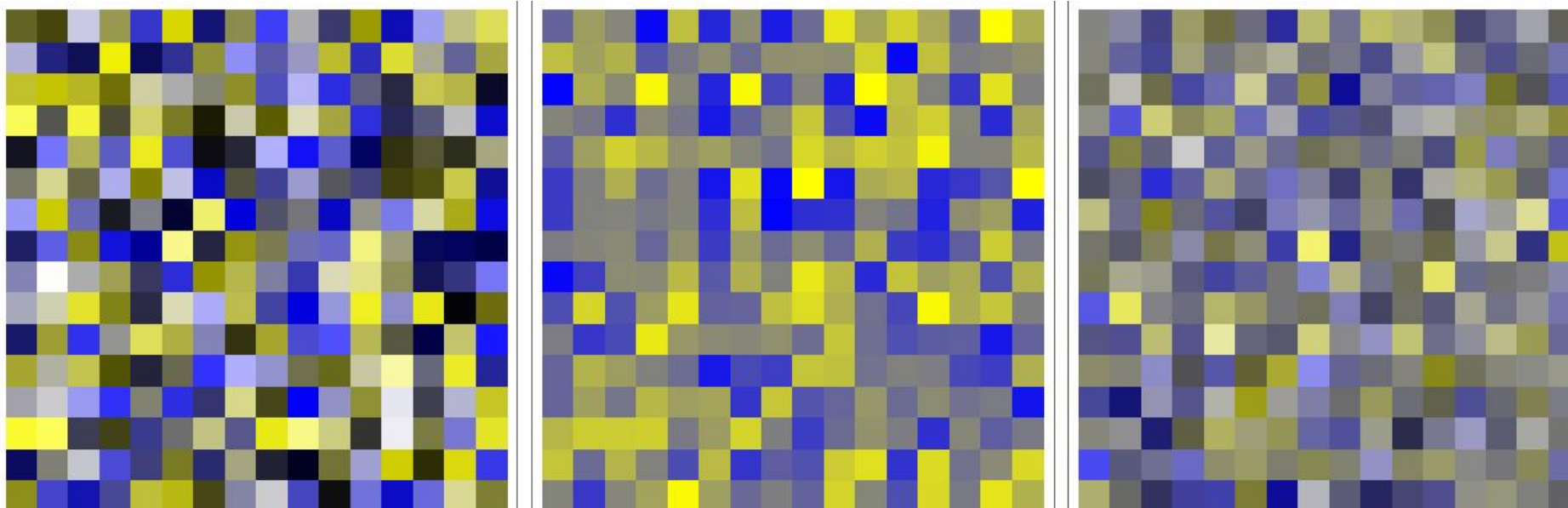


Figure 8

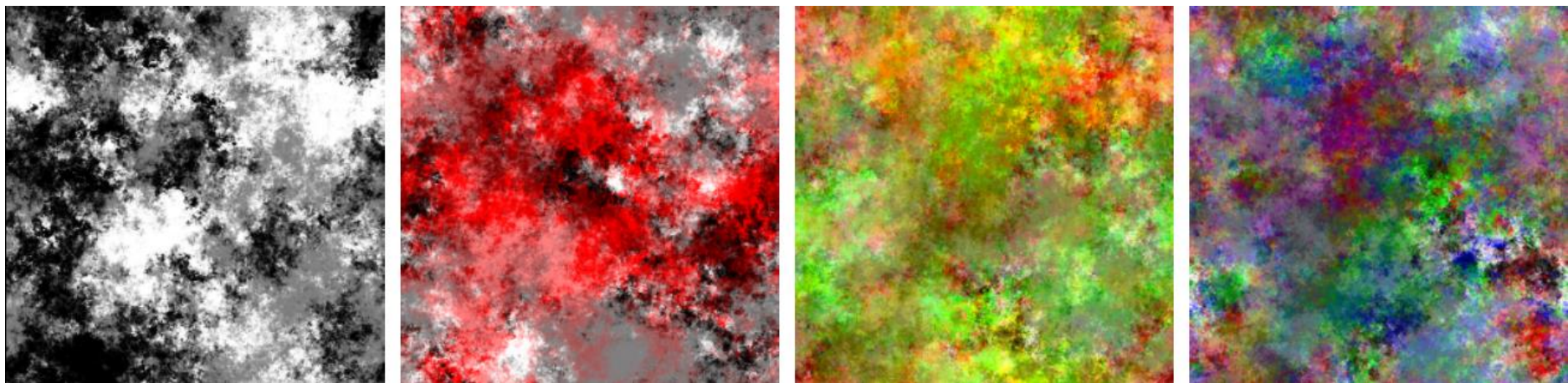


Figure 9

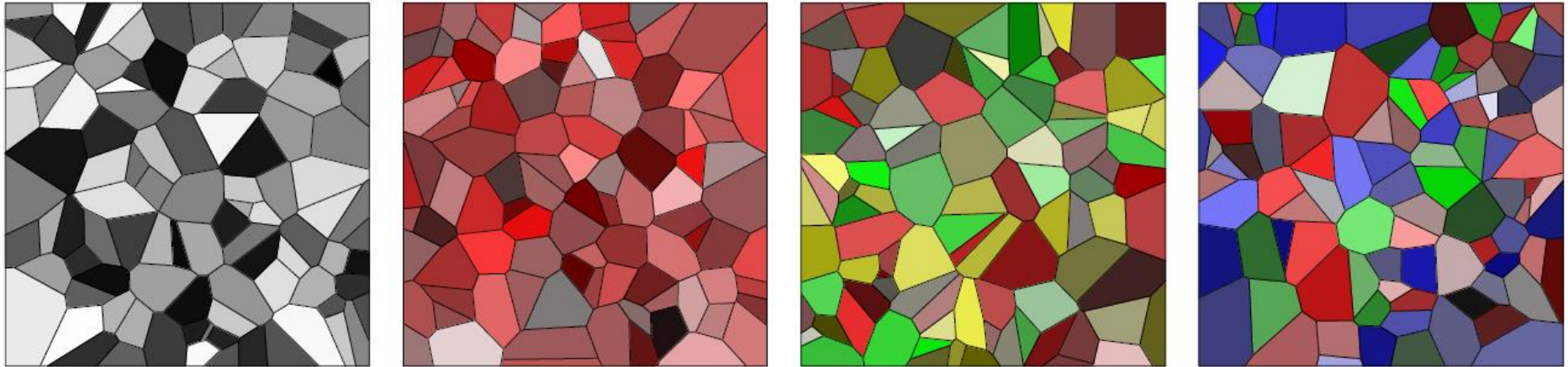


Figure 10

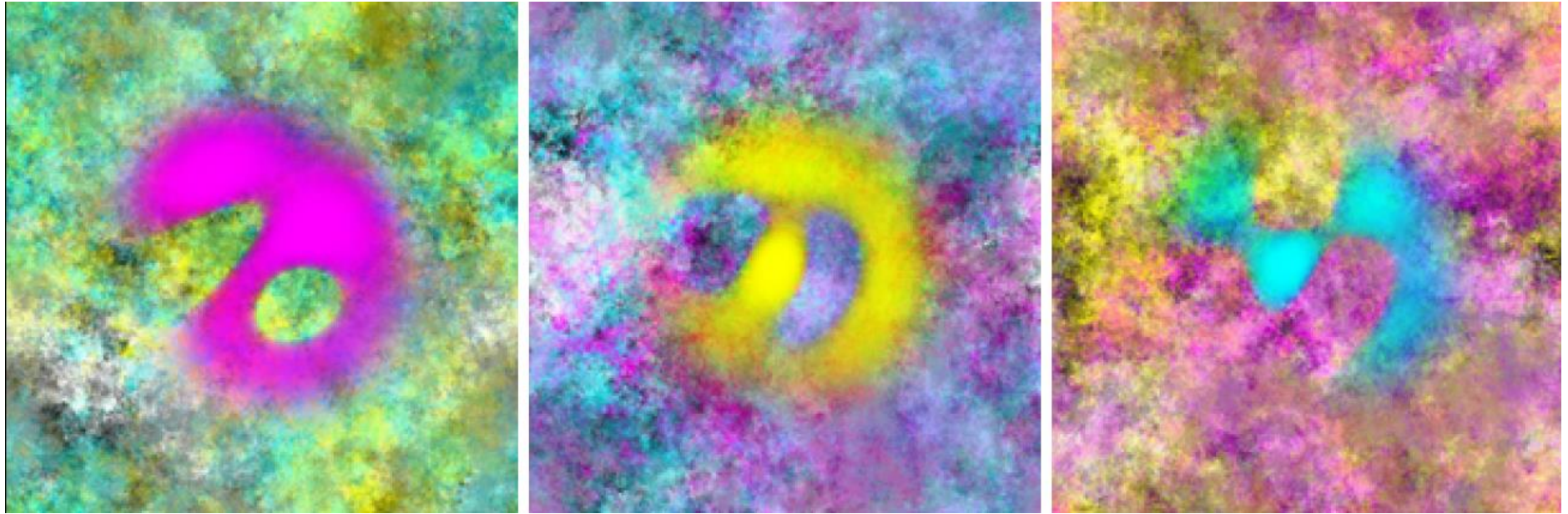


Figure 11

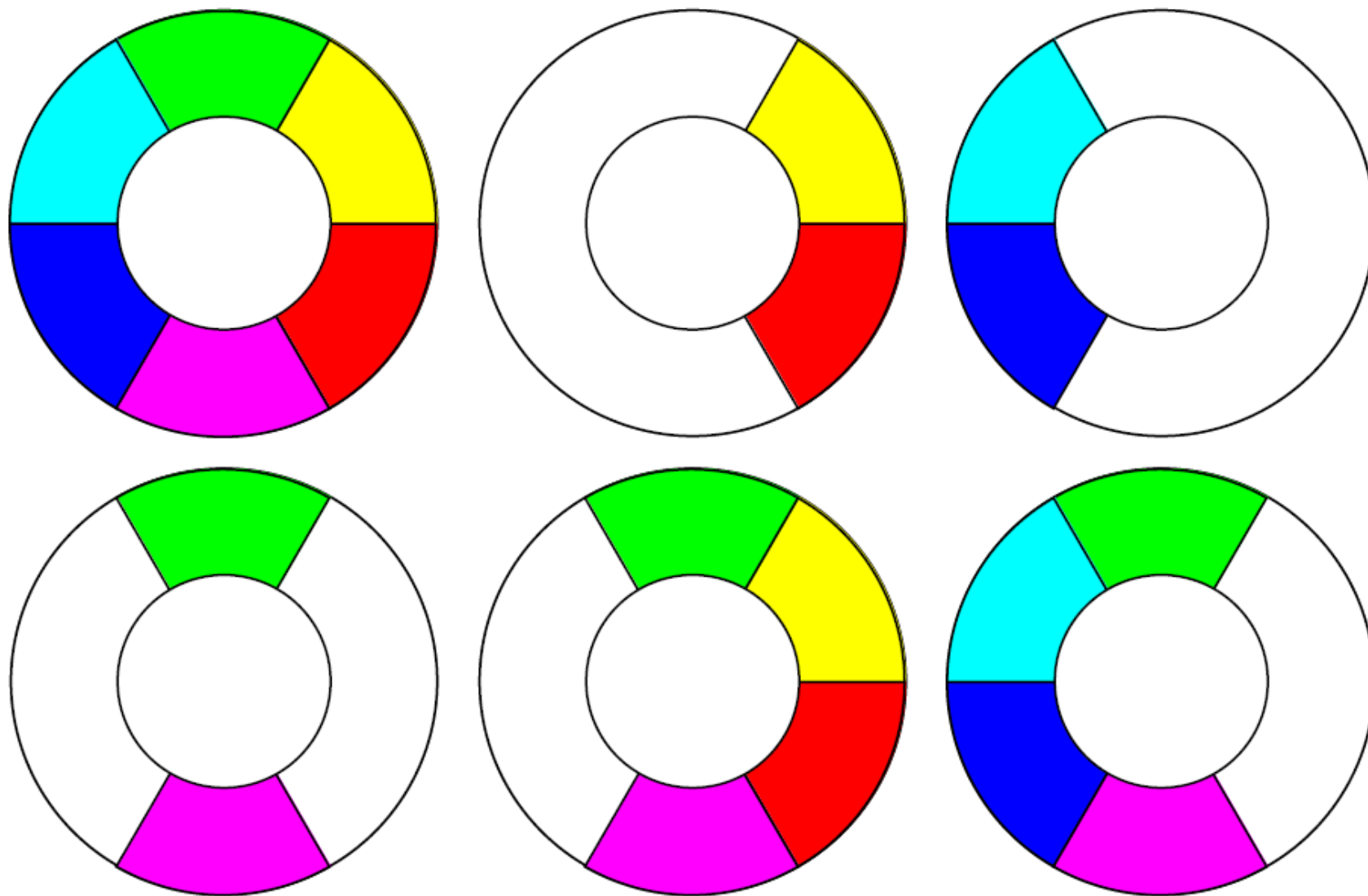


Figure 12

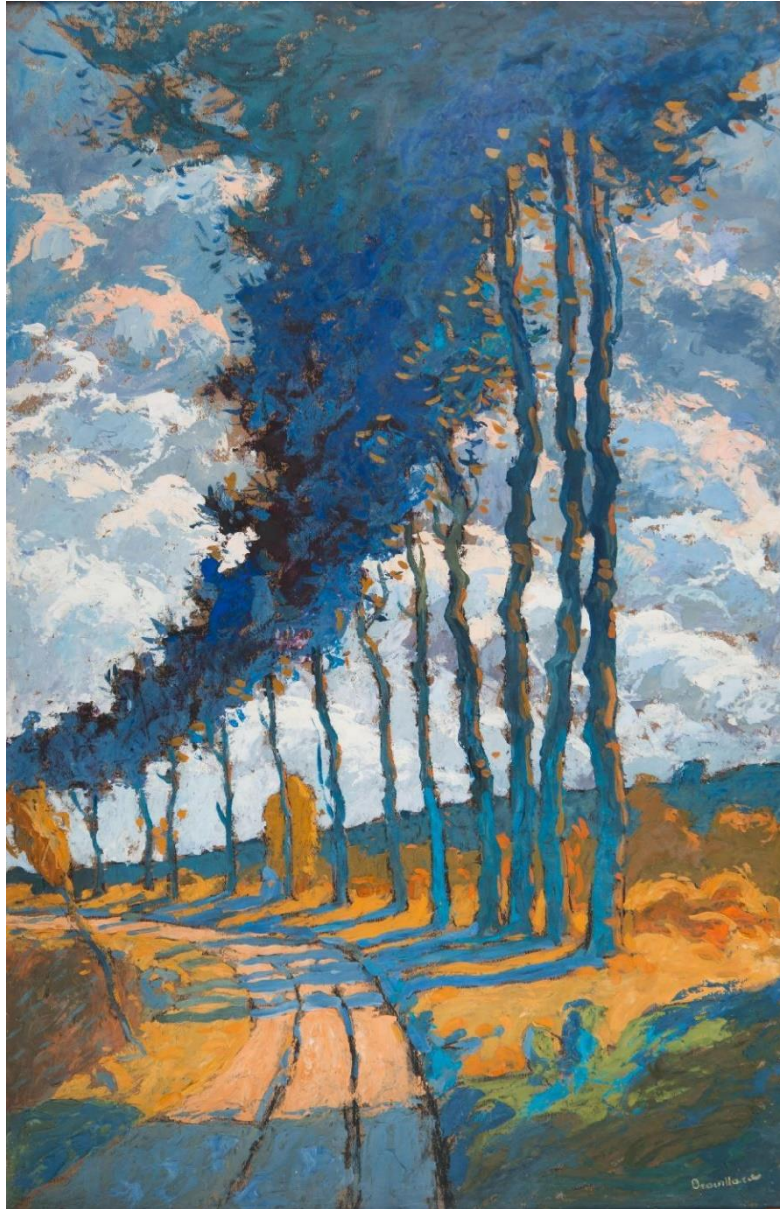


Figure 13

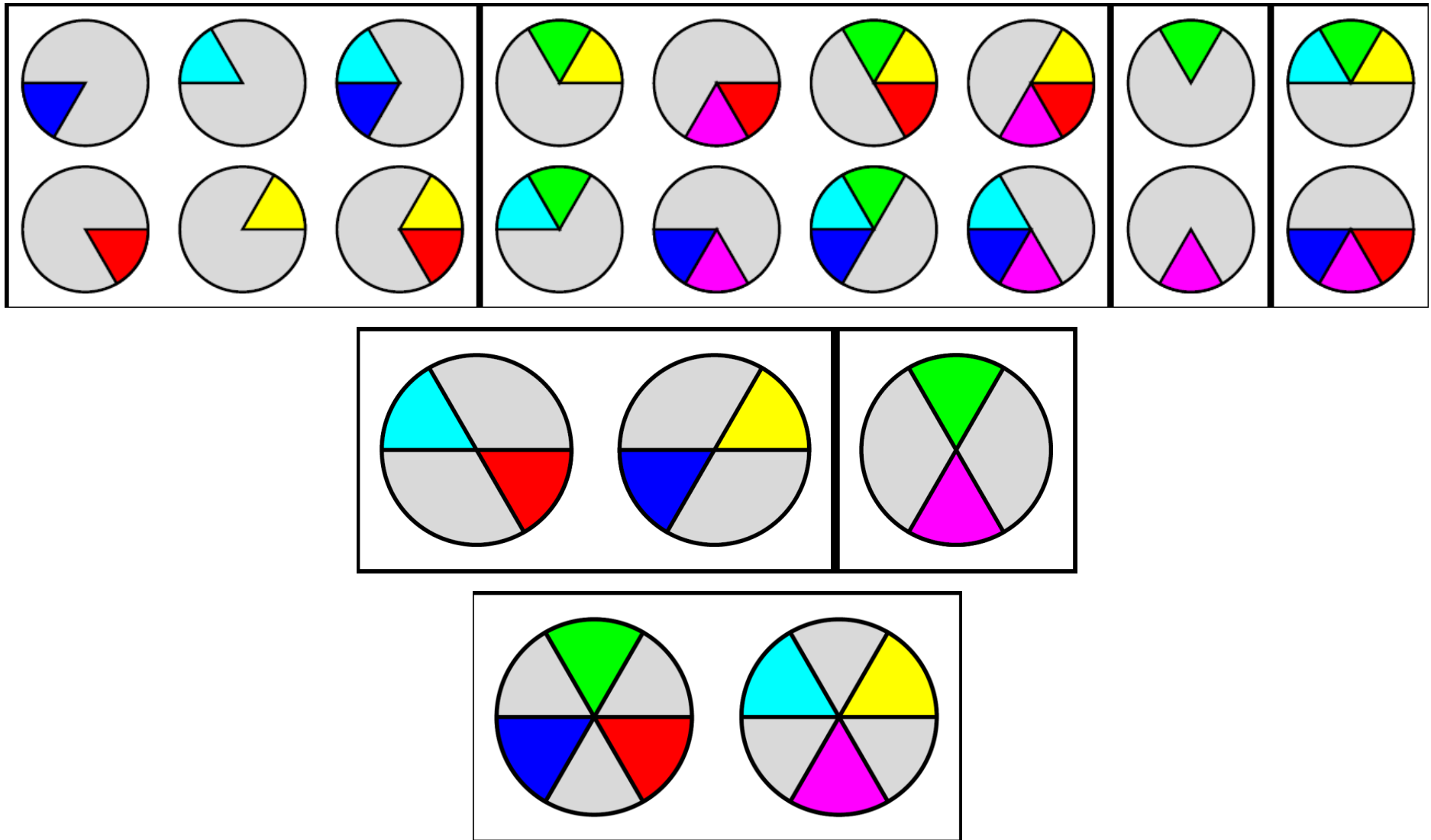
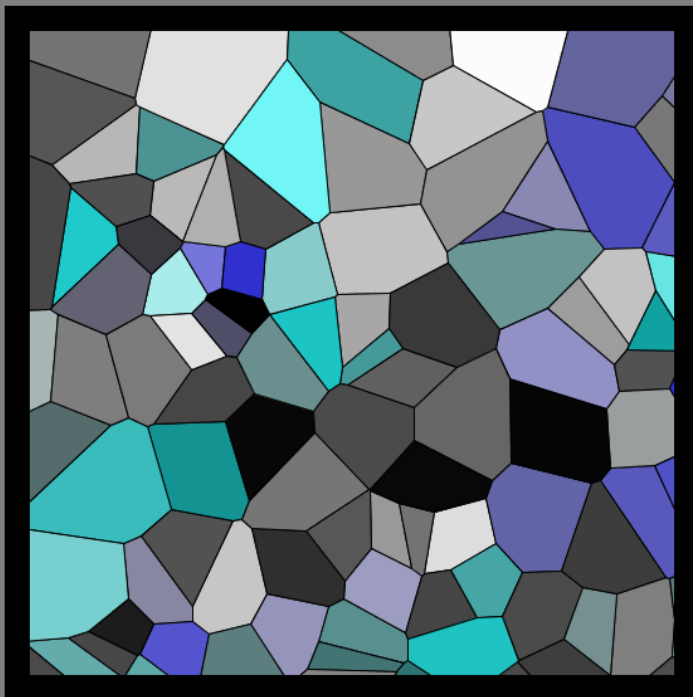


Figure 14

answer ALL questions, then proceed with RETURN

12:30- trial 0 of 42



look once again at the texture before tackling the next question!

irritierend irritating	stark strong	lebendig vivid	aufdringlich intrusive	lebhaft lively	stechend piercing	fröhlich cheerful
<input type="radio"/>	<input type="radio"/>	<input type="radio"/>	<input checked="" type="radio"/>	<input checked="" type="radio"/>	<input type="radio"/>	<input type="radio"/>
<input type="radio"/>	<input type="radio"/>	<input type="radio"/>	<input type="radio"/>	<input type="radio"/>	<input checked="" type="radio"/>	<input type="radio"/>
<input checked="" type="radio"/>	<input type="radio"/>	<input type="radio"/>	<input type="radio"/>	<input type="radio"/>	<input type="radio"/>	<input checked="" type="radio"/>
<input type="radio"/>	<input checked="" type="radio"/>	<input type="radio"/>	<input type="radio"/>	<input type="radio"/>	<input type="radio"/>	<input type="radio"/>
<input type="radio"/>	<input type="radio"/>	<input checked="" type="radio"/>	<input type="radio"/>	<input type="radio"/>	<input type="radio"/>	<input type="radio"/>
soothing beruhigend	weak schwach	dull dumpf	subdued zurückhaltend	calm ruhig	blunt stumpf	gloomy schwermütig

Figure 15

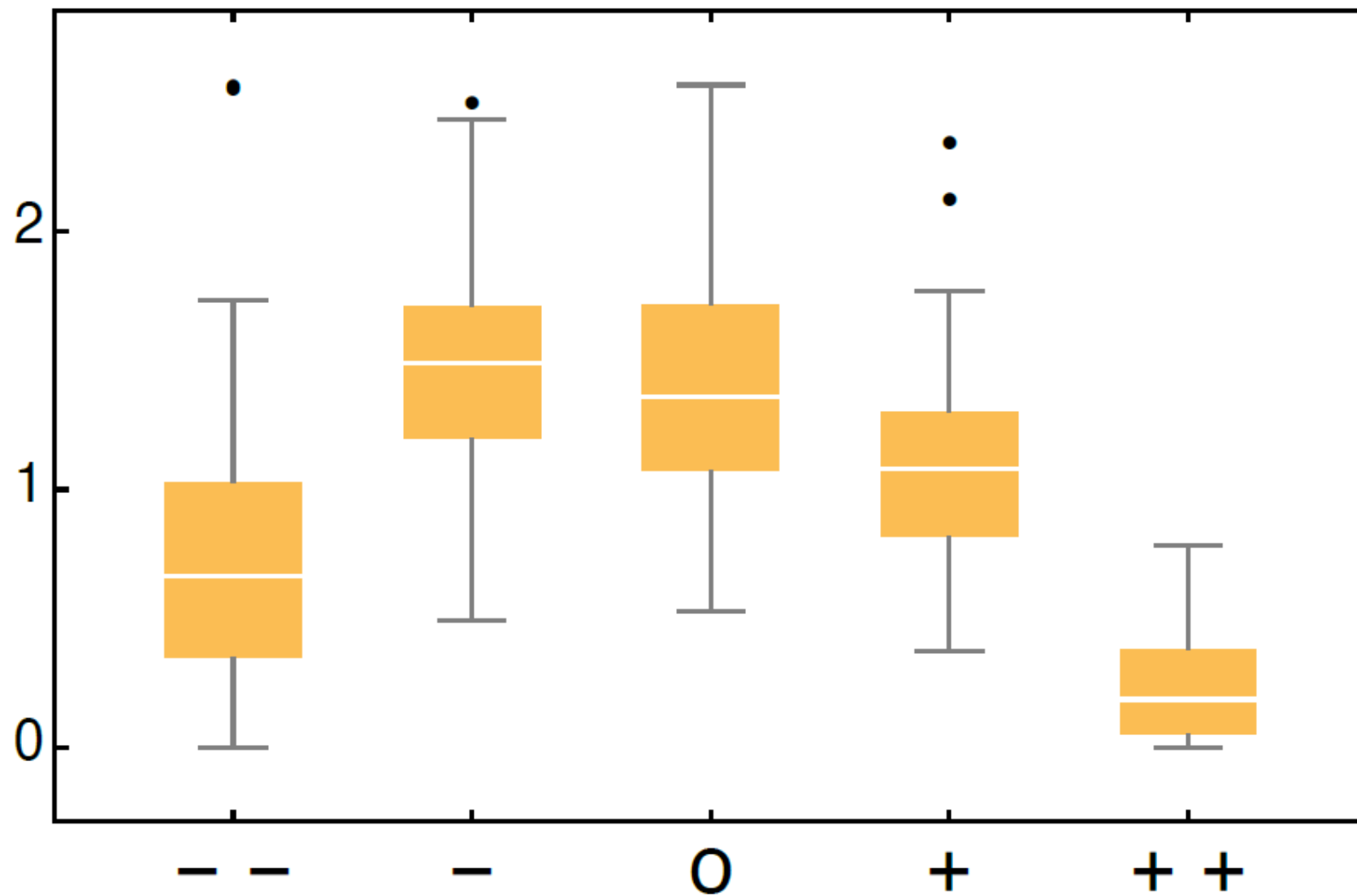
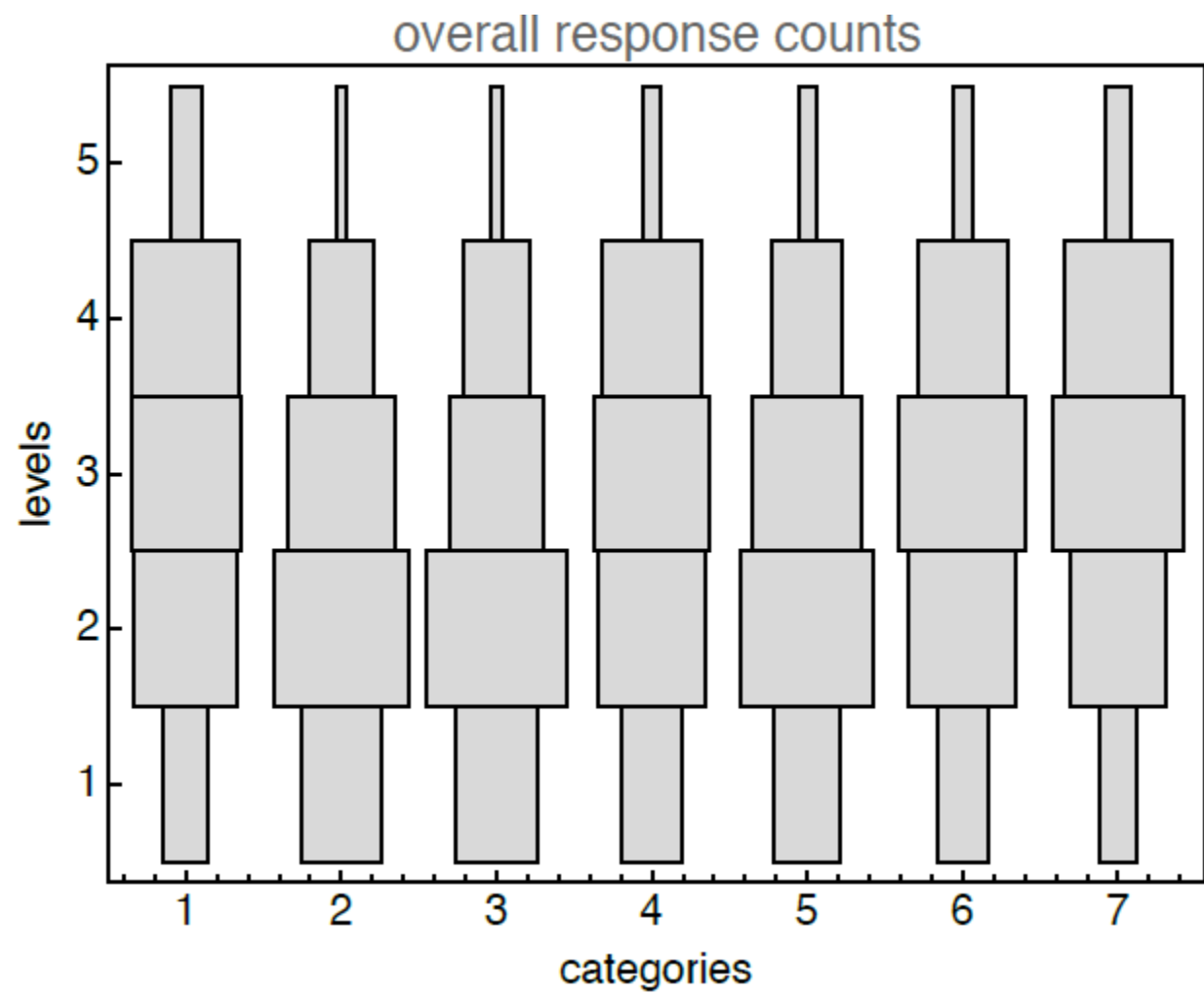


Figure 16



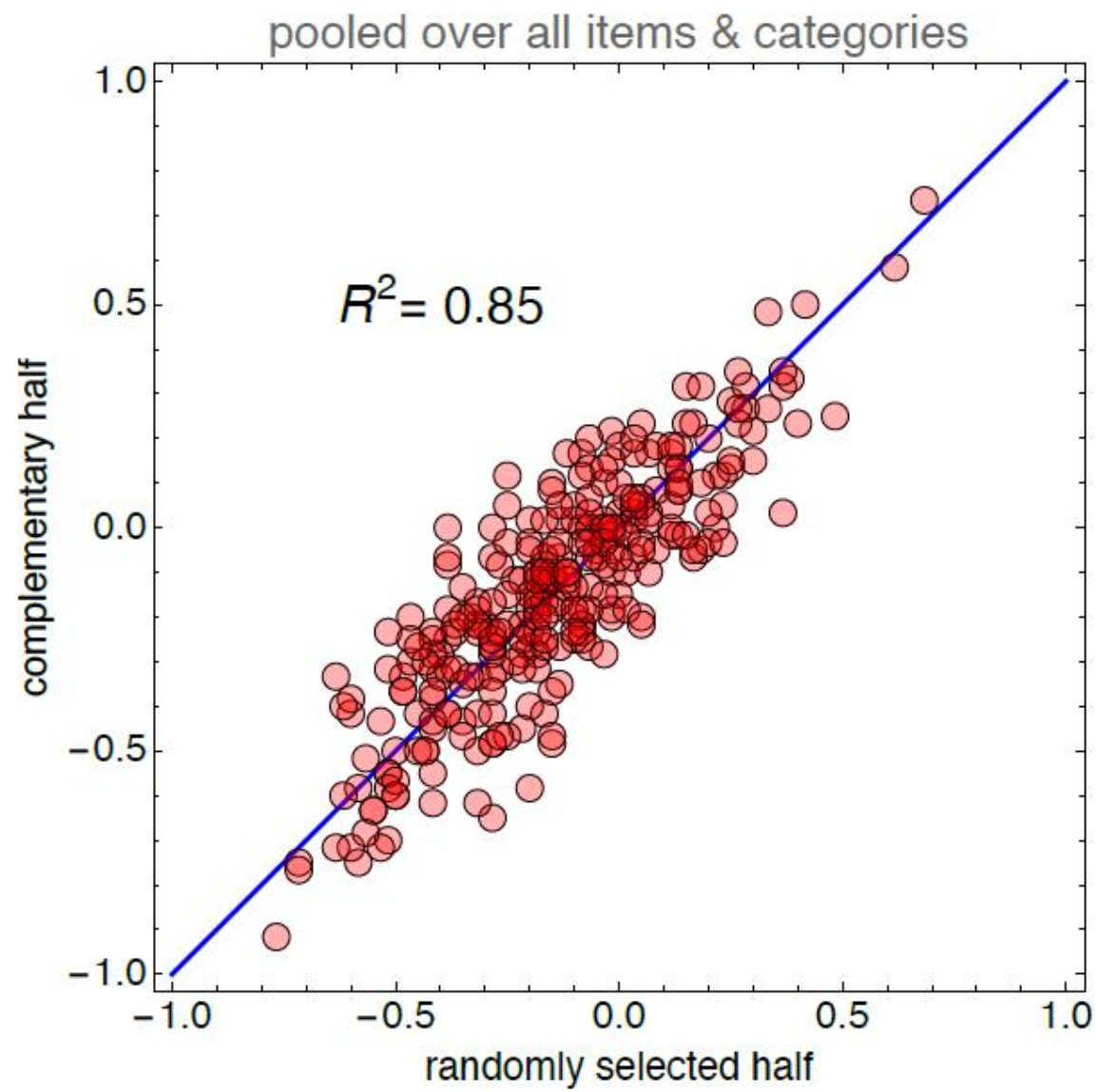


Figure 18

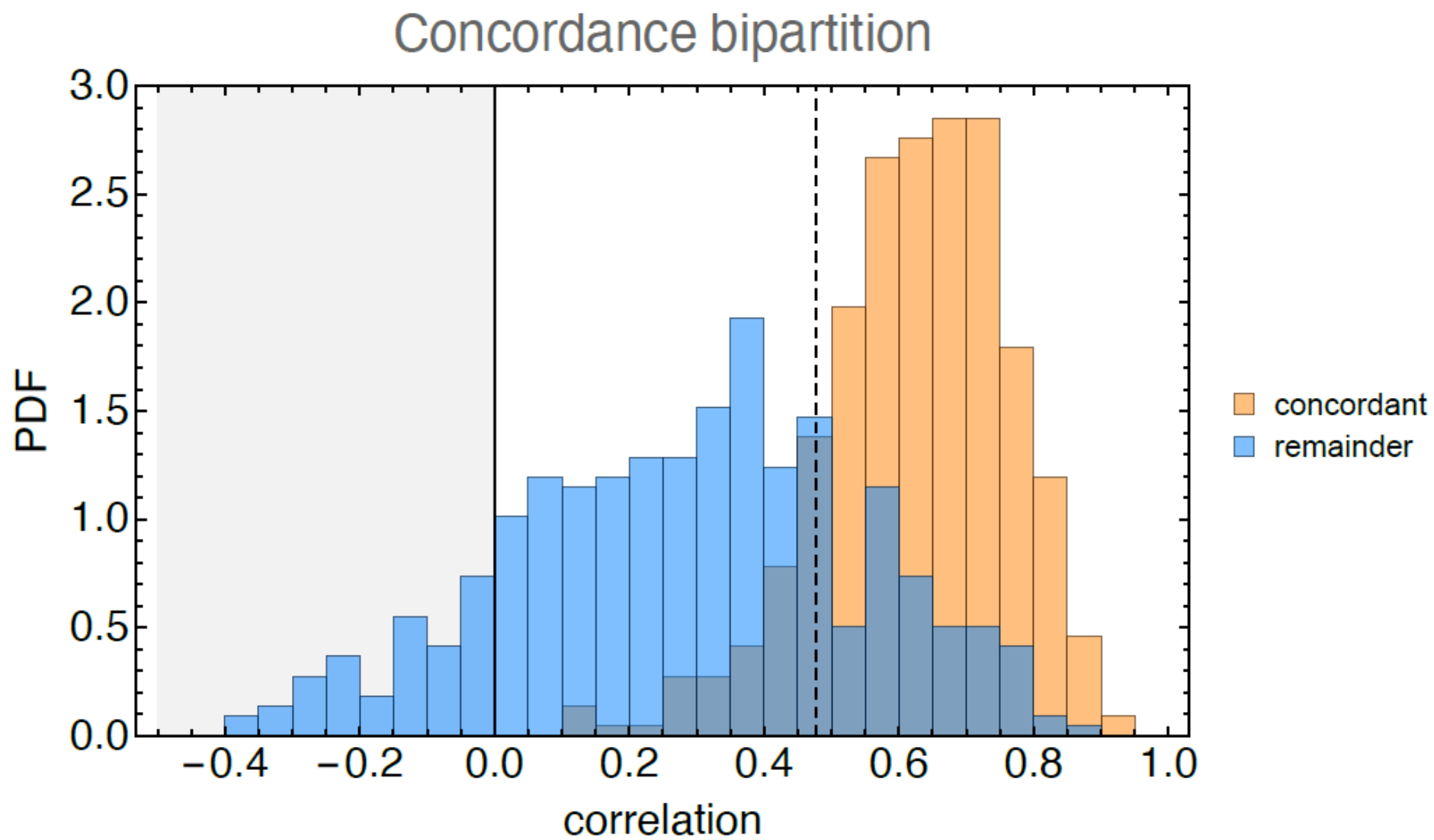


Figure 19

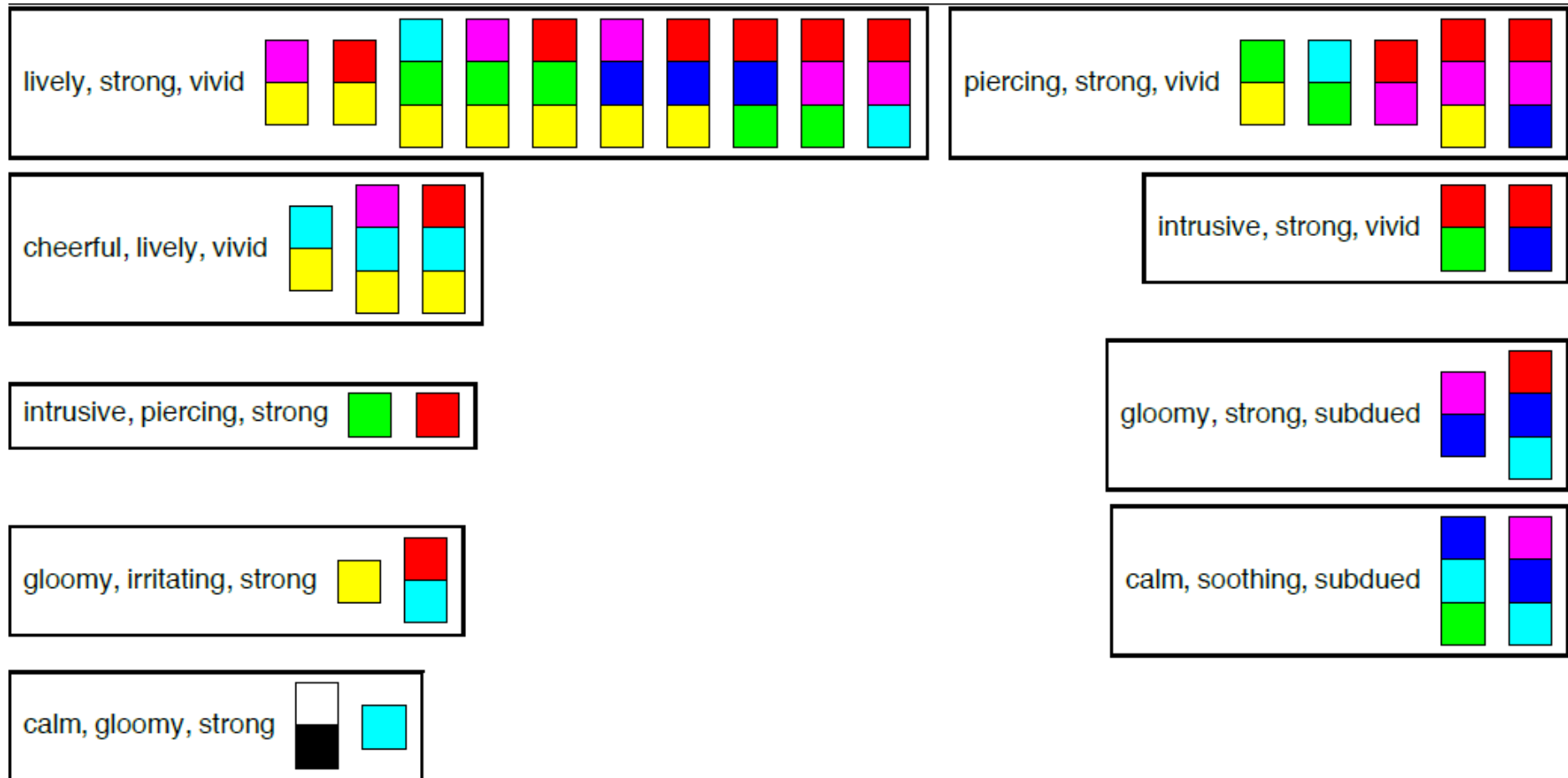


Figure 20

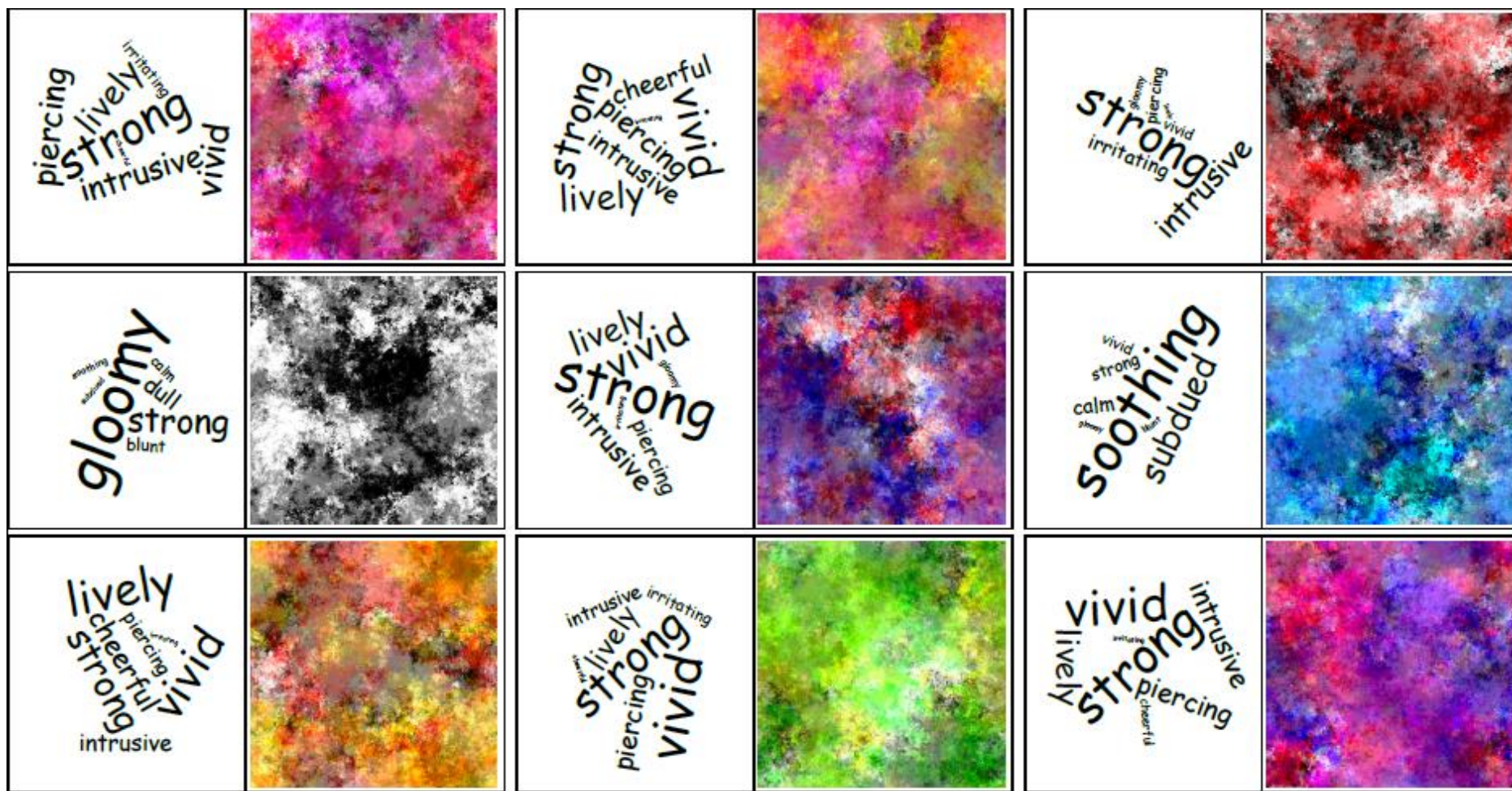


Figure 21

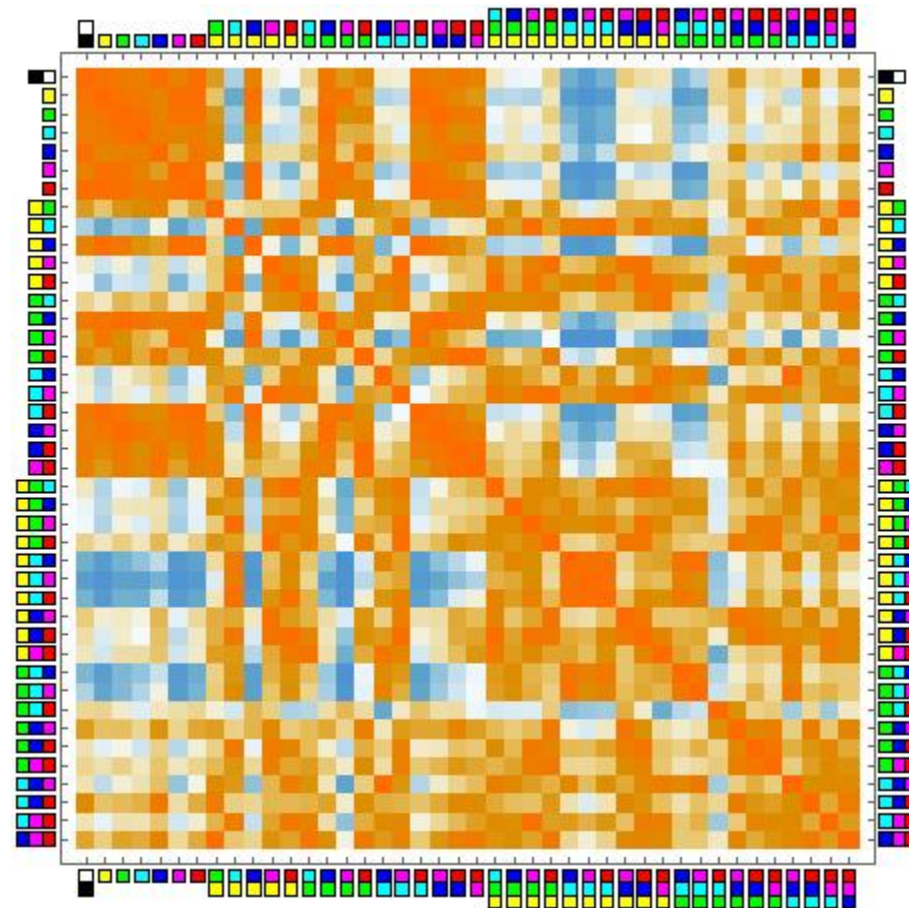


Figure 22

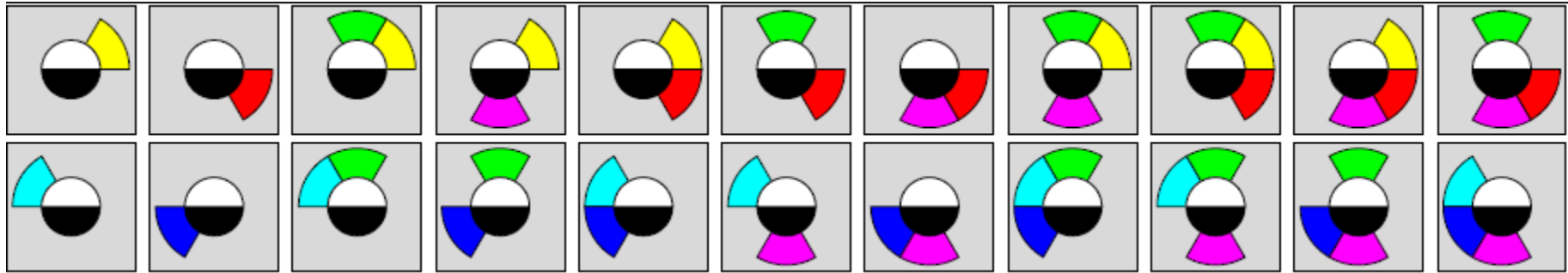


Figure 23

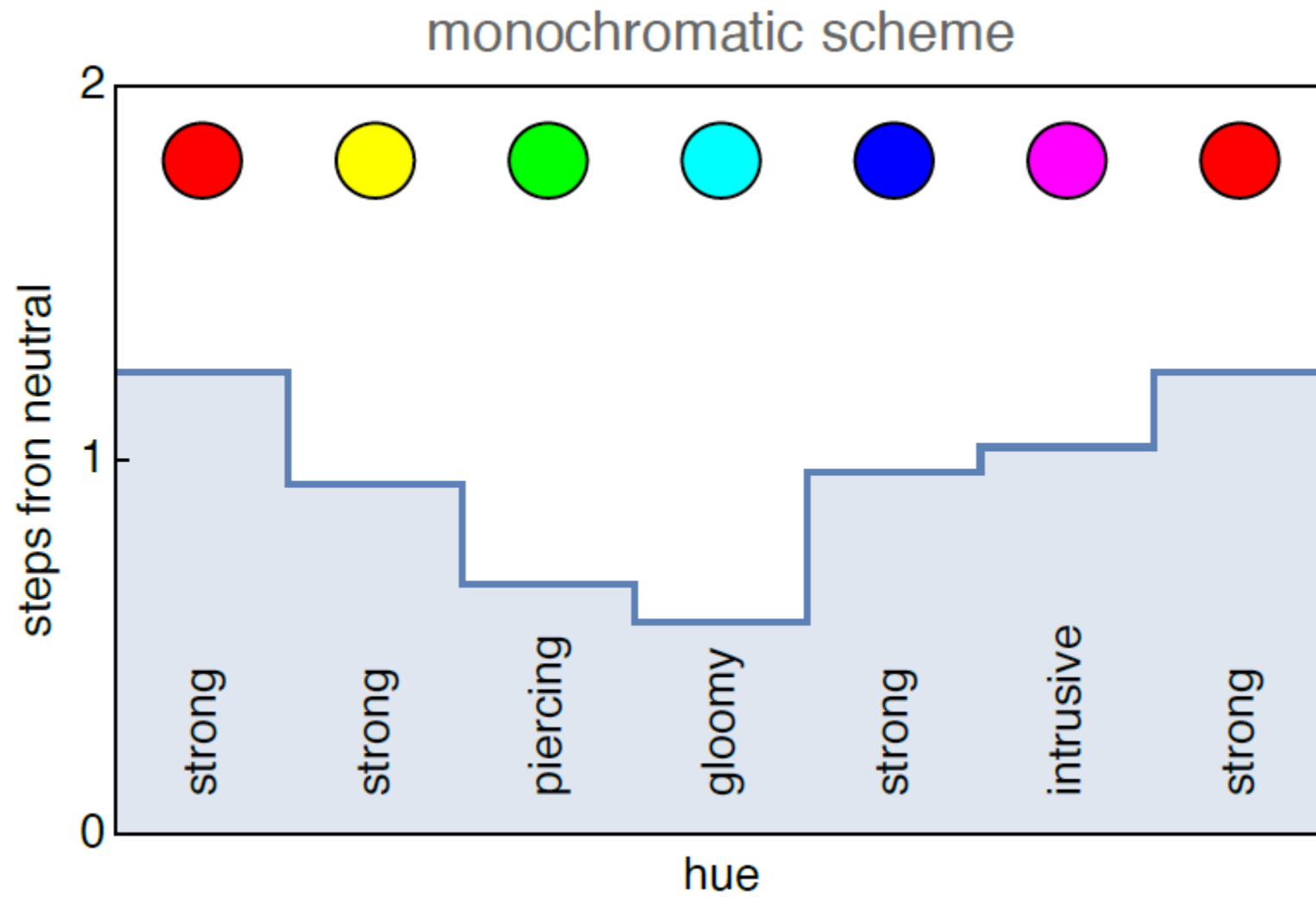


Figure 24

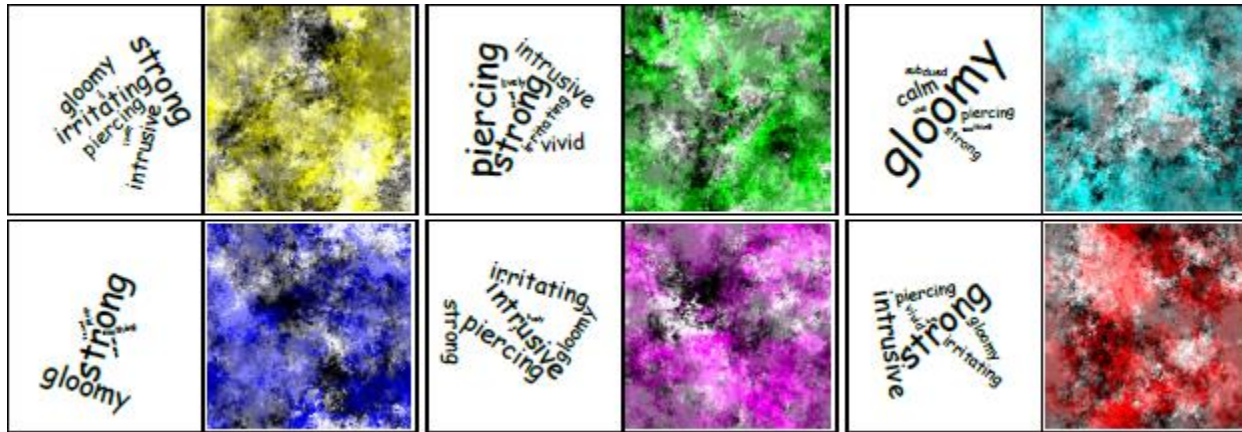


Figure 25

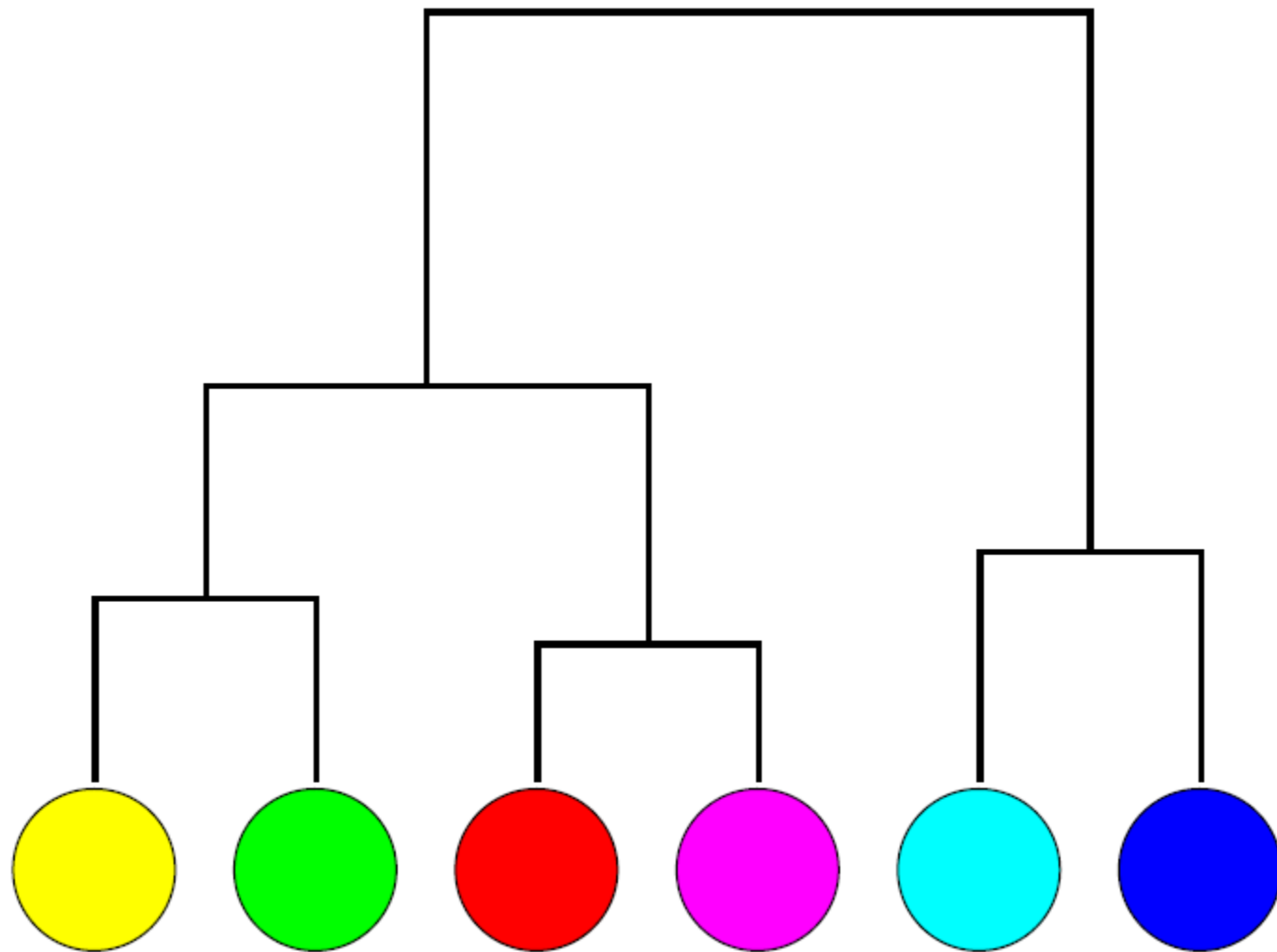


Figure 26

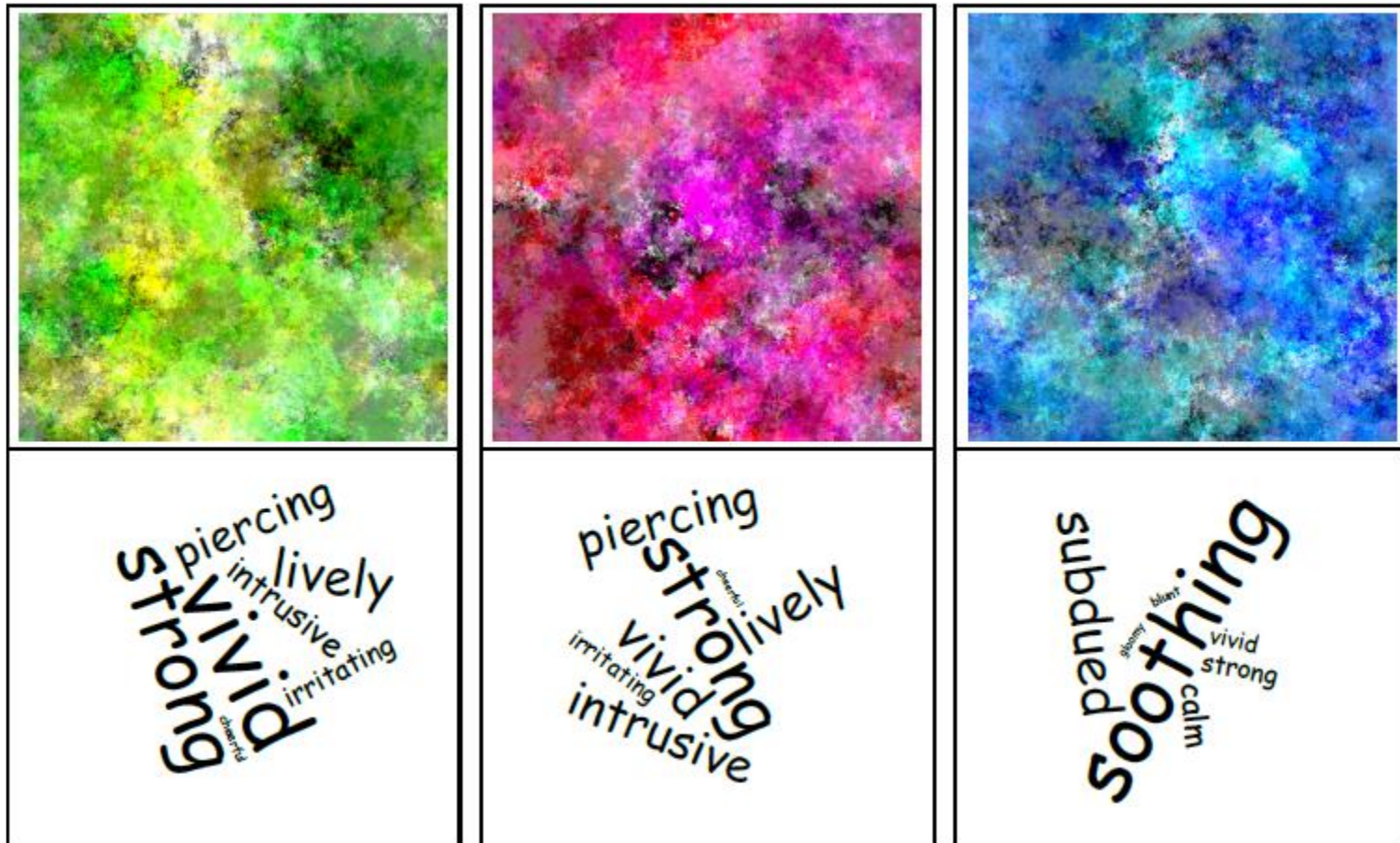


Figure 27

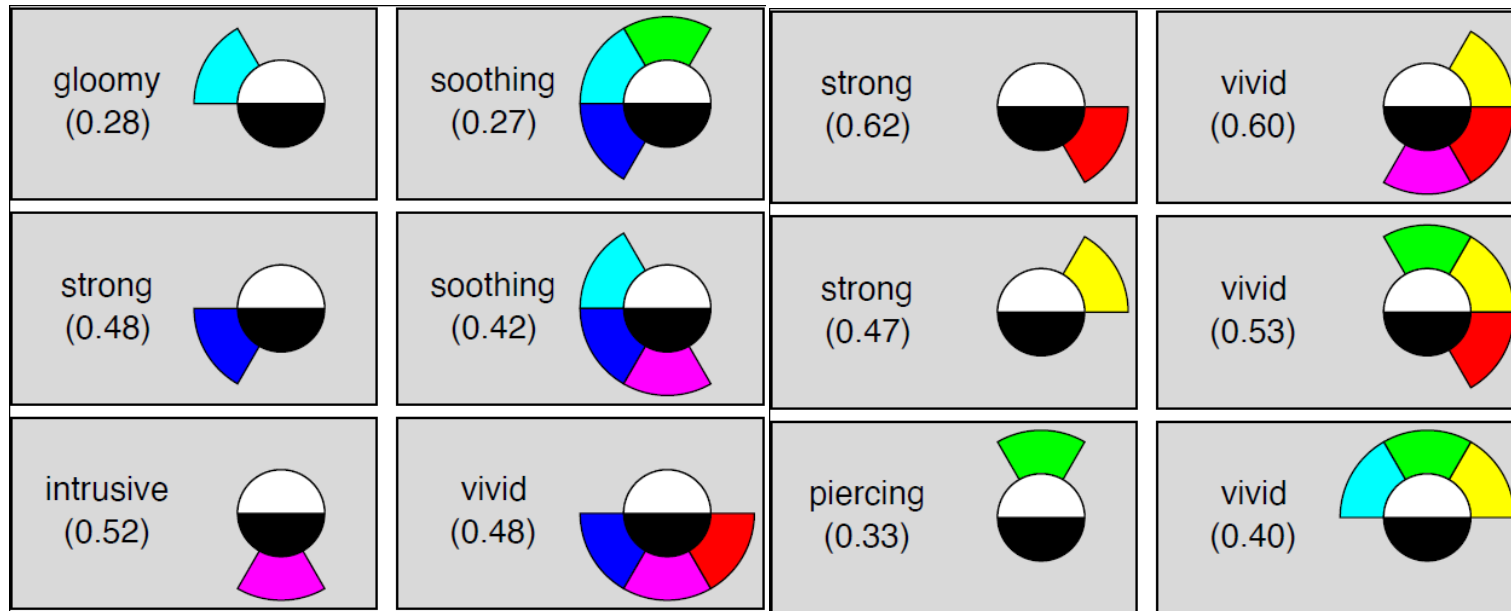


Figure 28

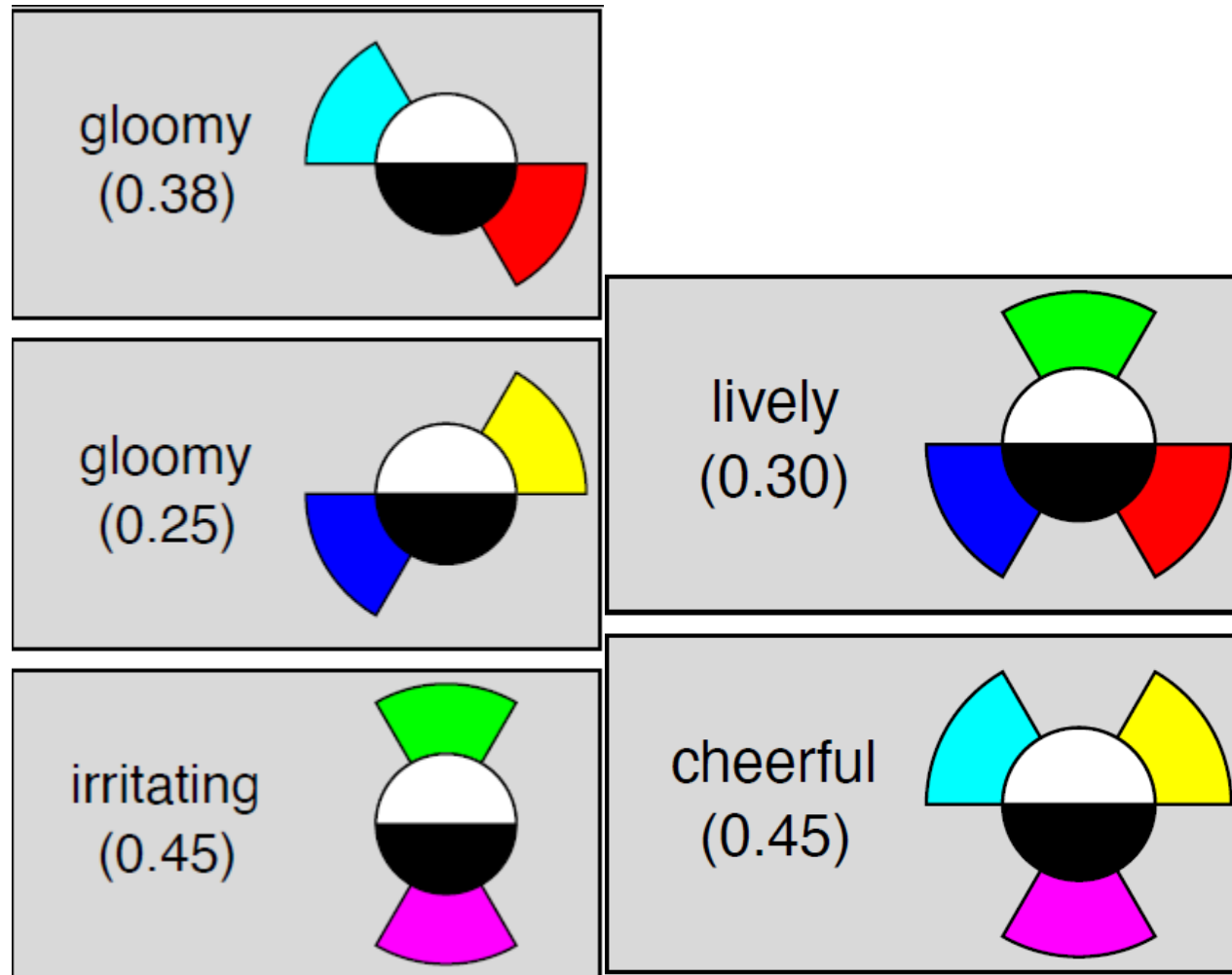


Figure 29

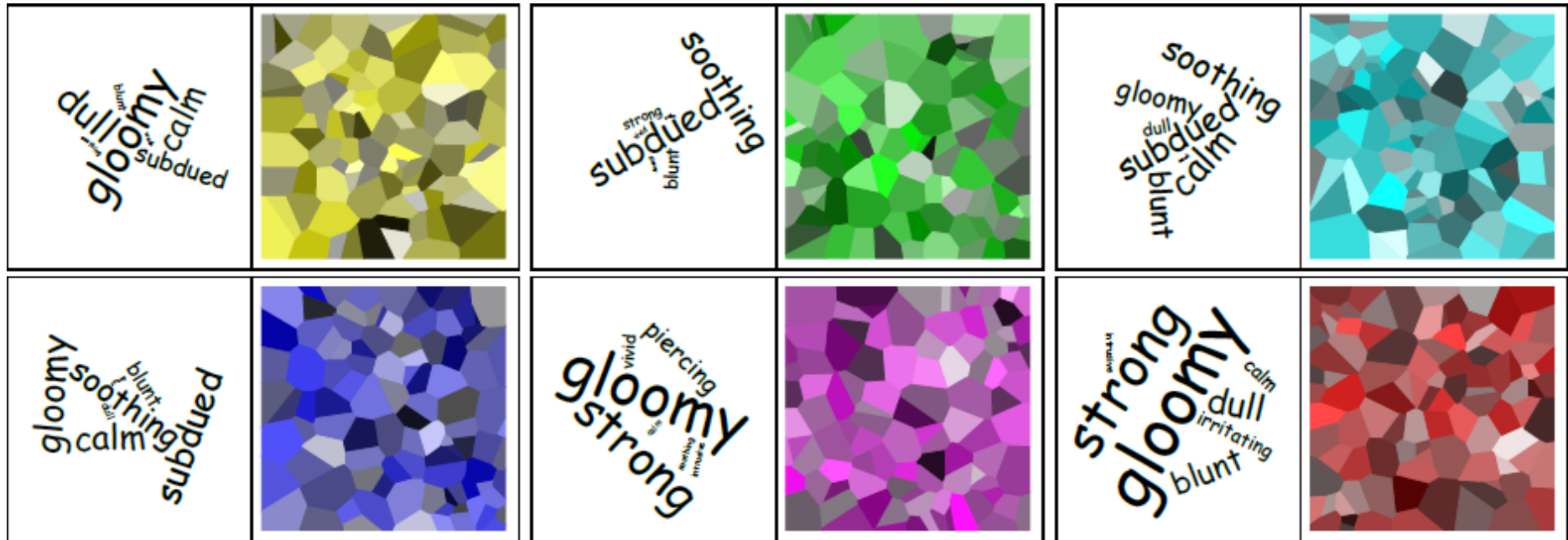


Figure 30

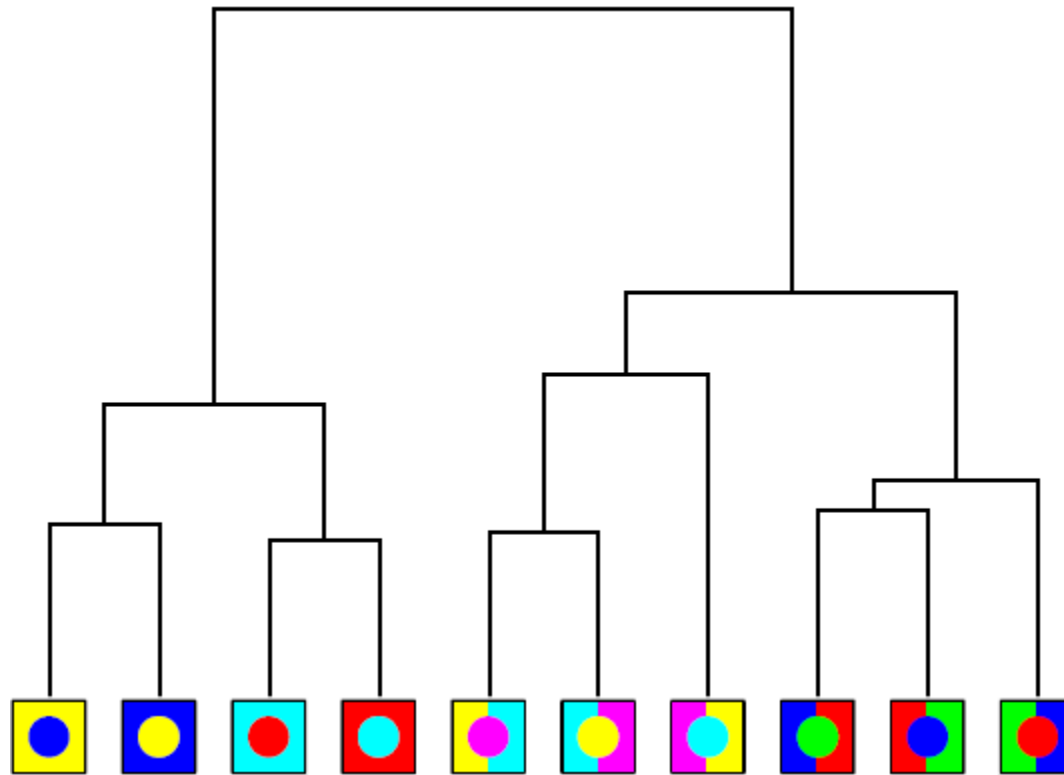


Figure 31

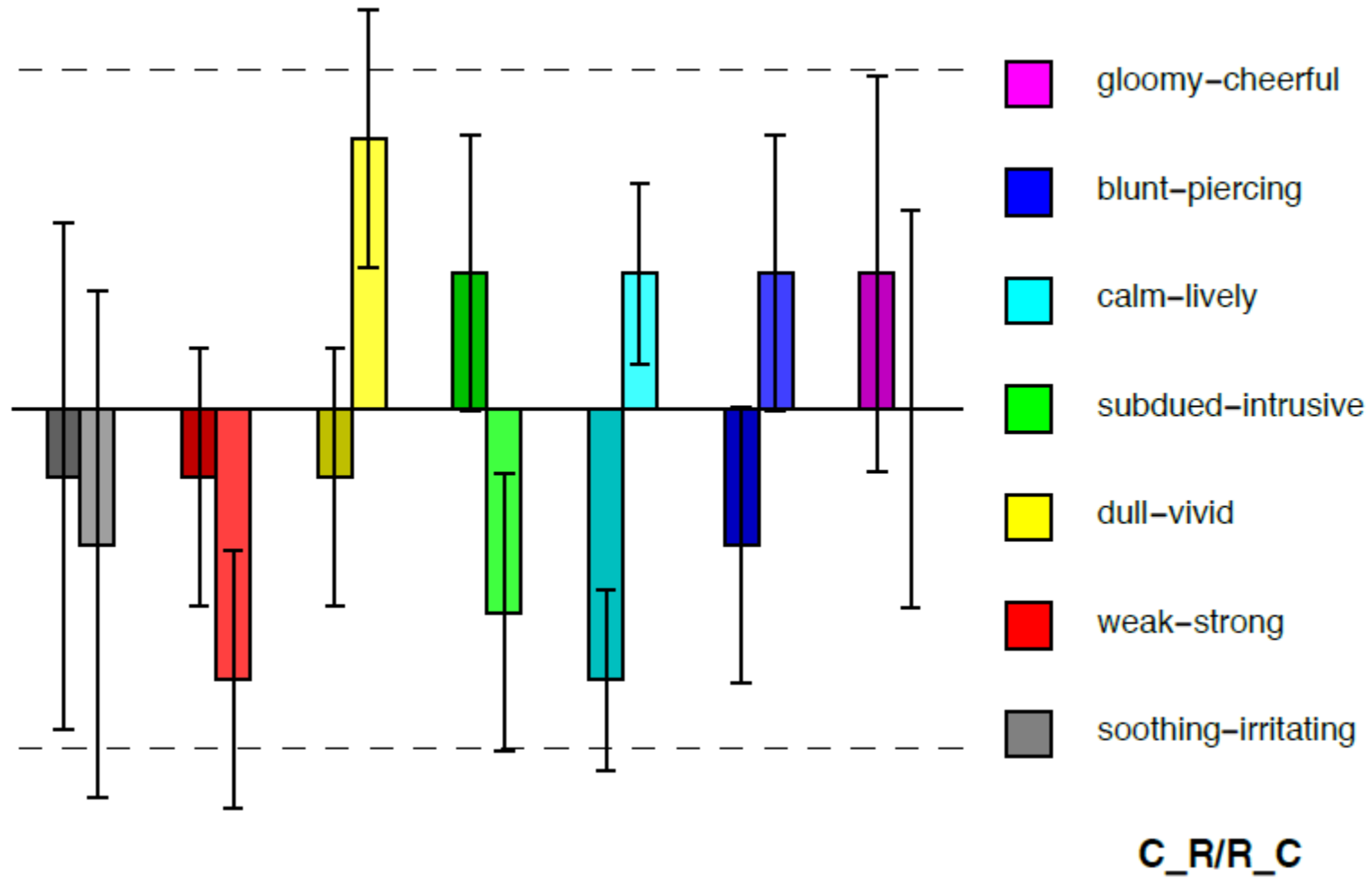


Figure 32



Figure 33

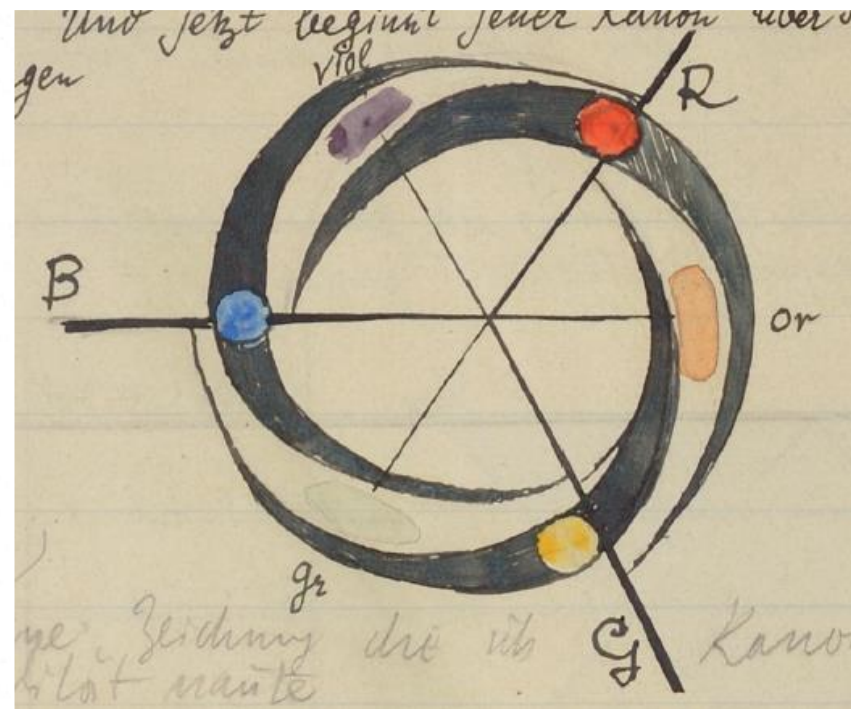
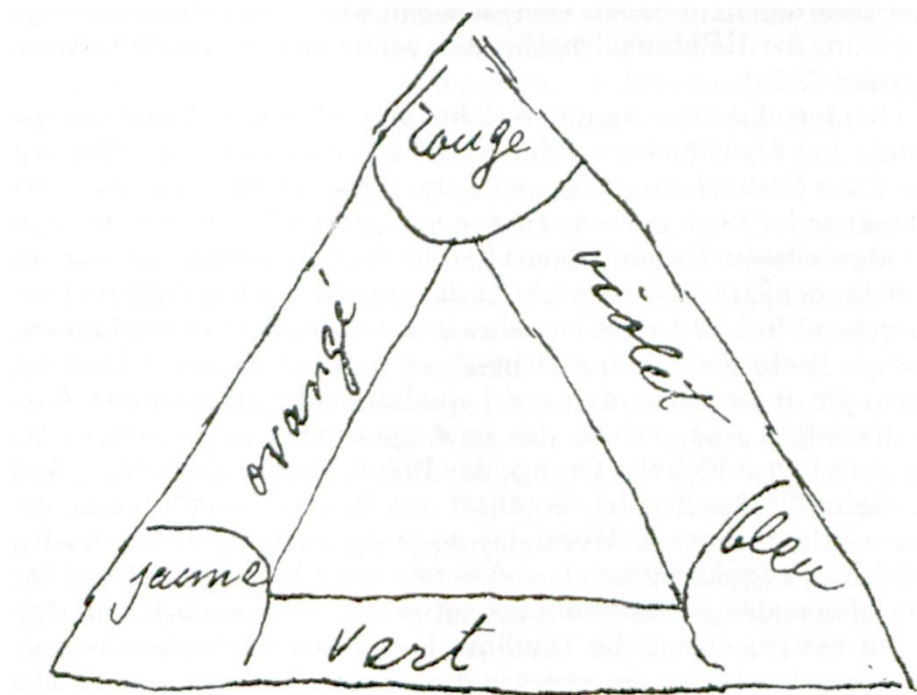
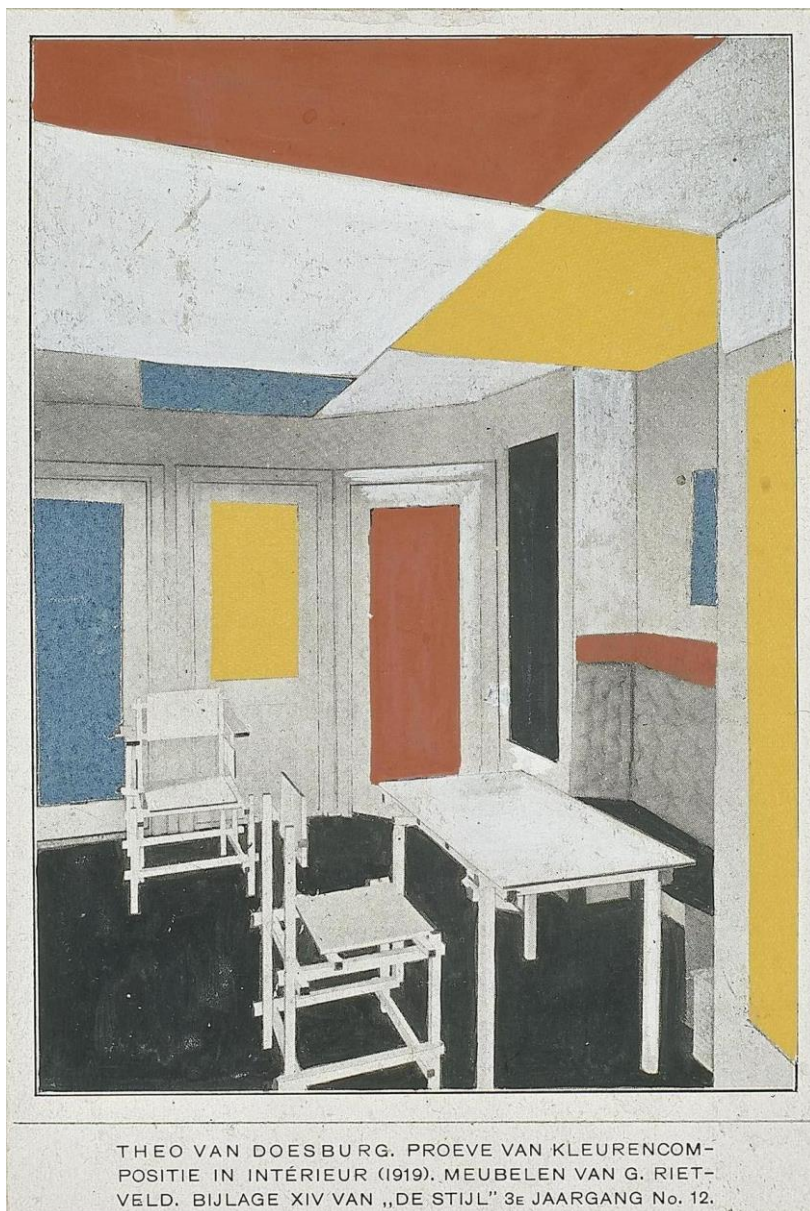


Figure 34



THEO VAN DOESBURG. PROEVE VAN KLEURENCOM-
POSITIE IN INTÉRIEUR (1919). MEUBELN VAN G. RIET-
VELD. BIJLAGE XIV VAN „DE STIJL” 3E JAARGANG No. 12.

Figure 35

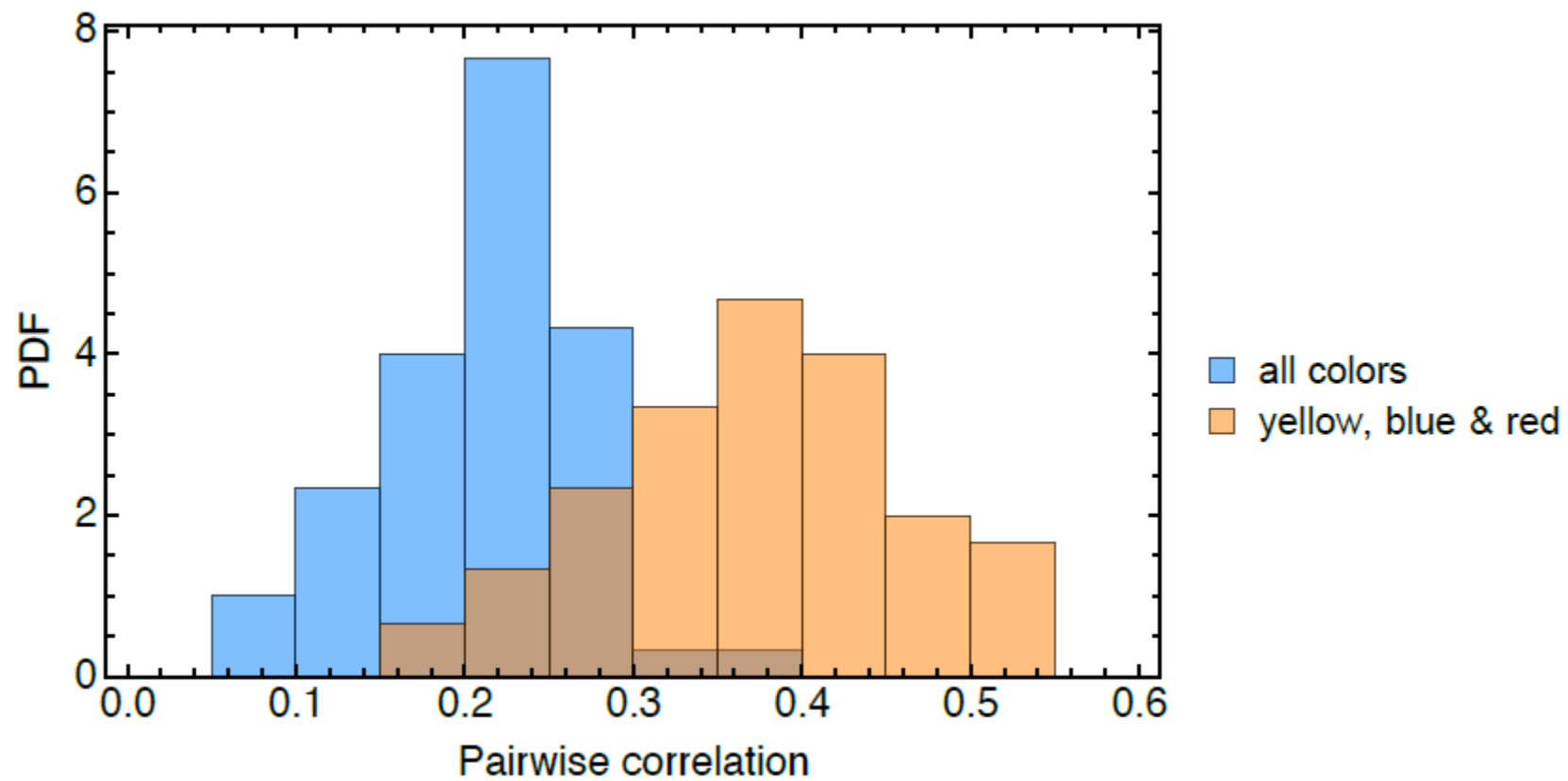


Figure 36

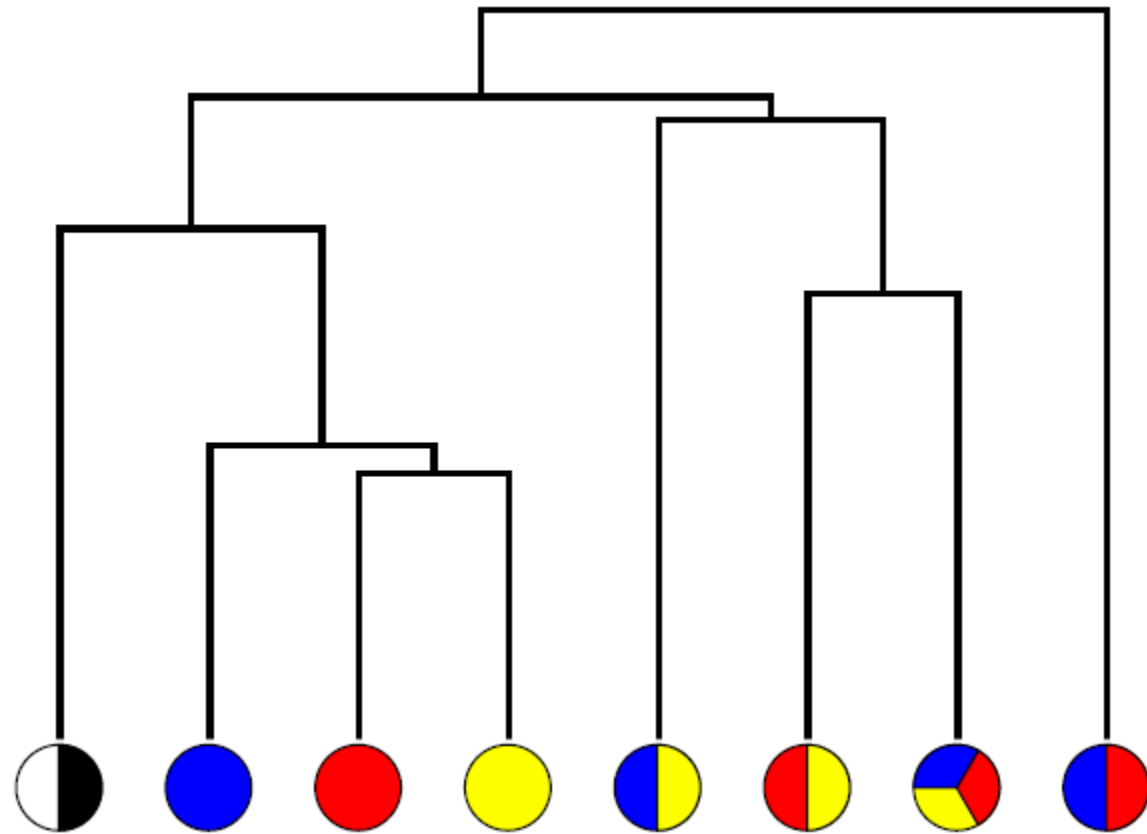


Figure 37

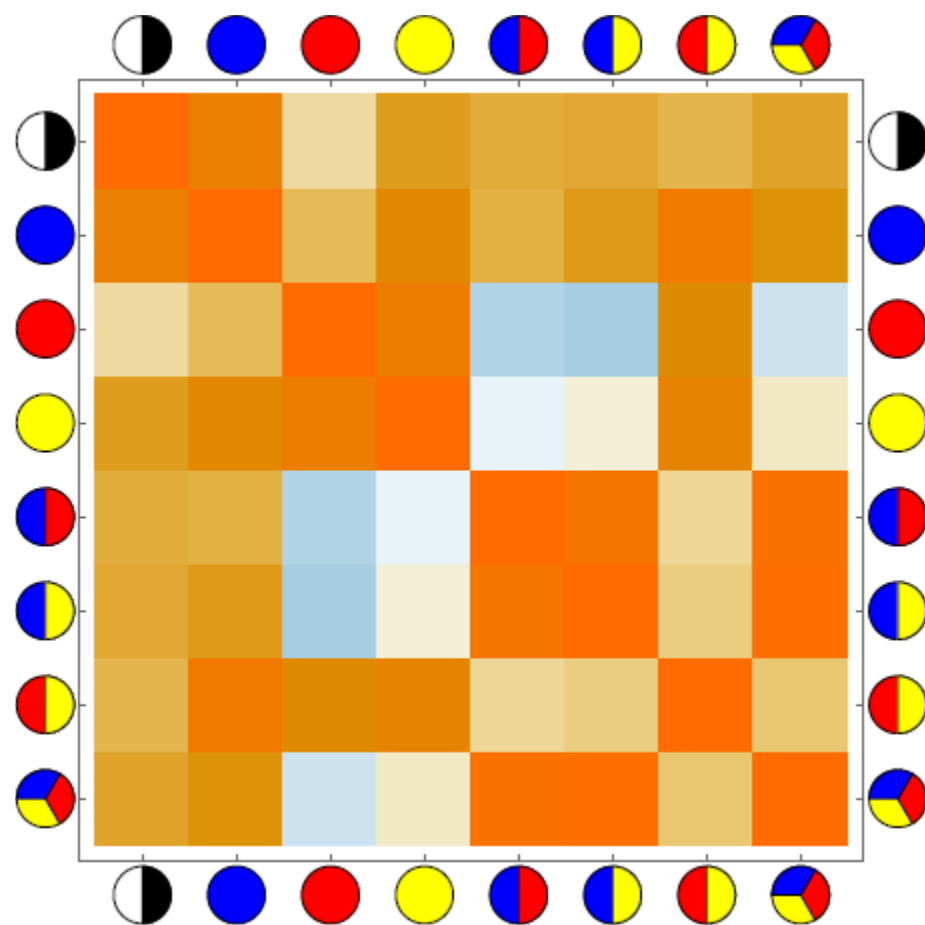


Figure 38

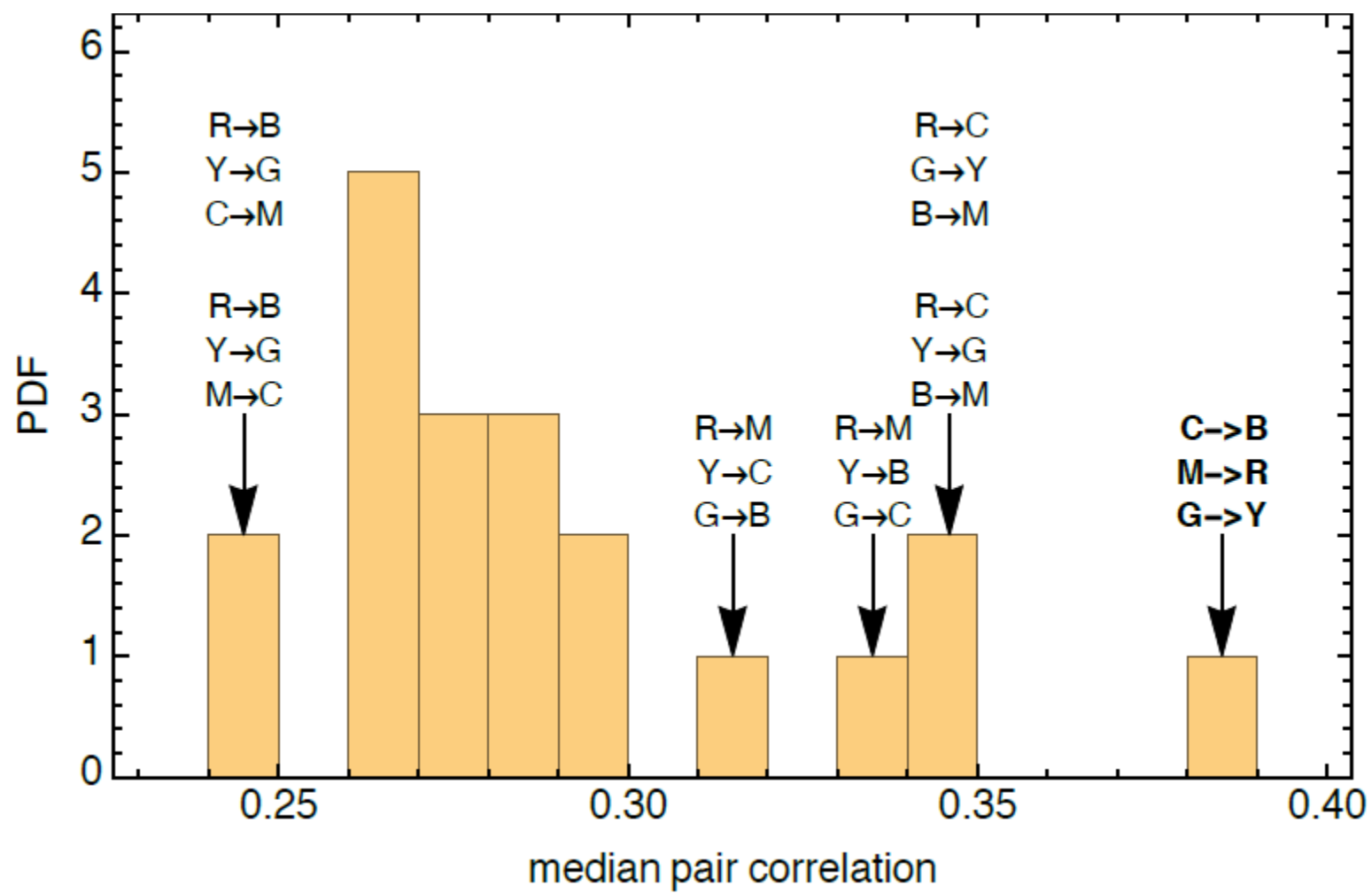


Figure 39

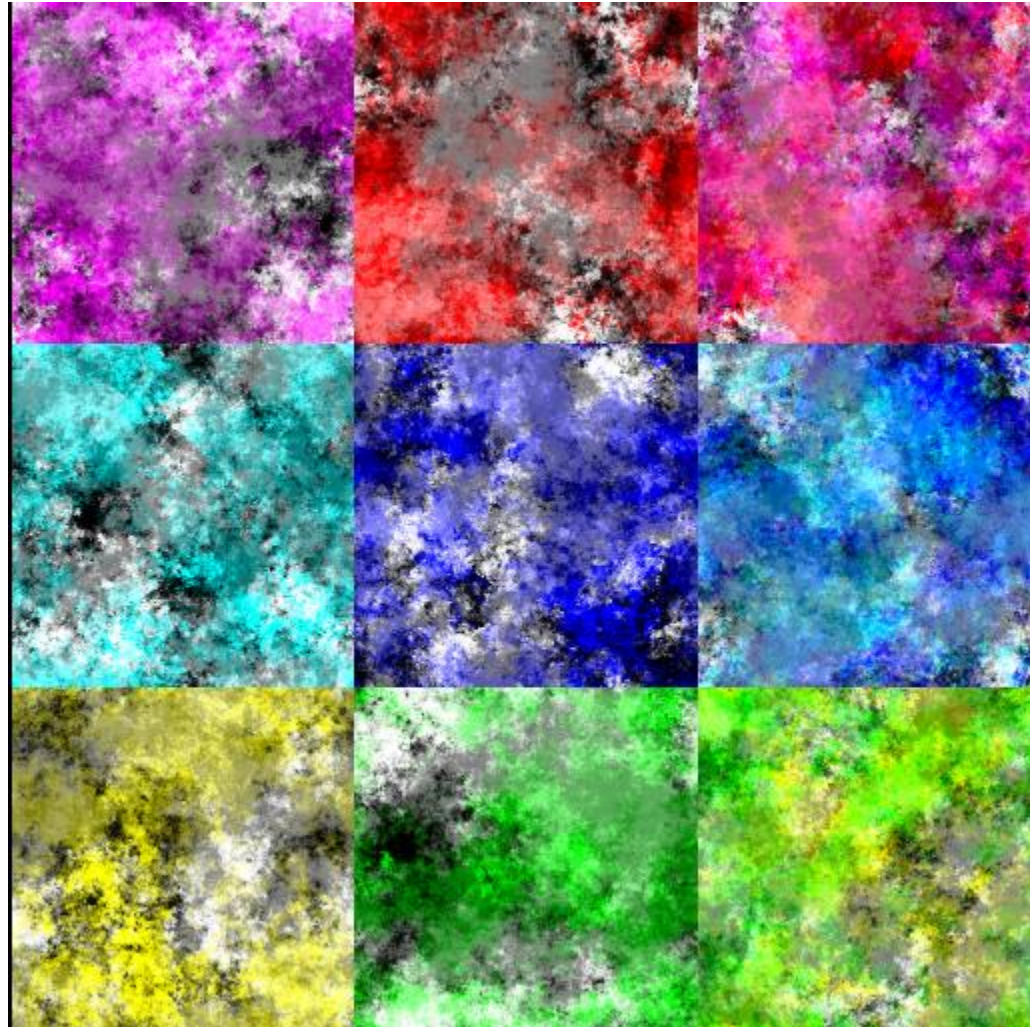
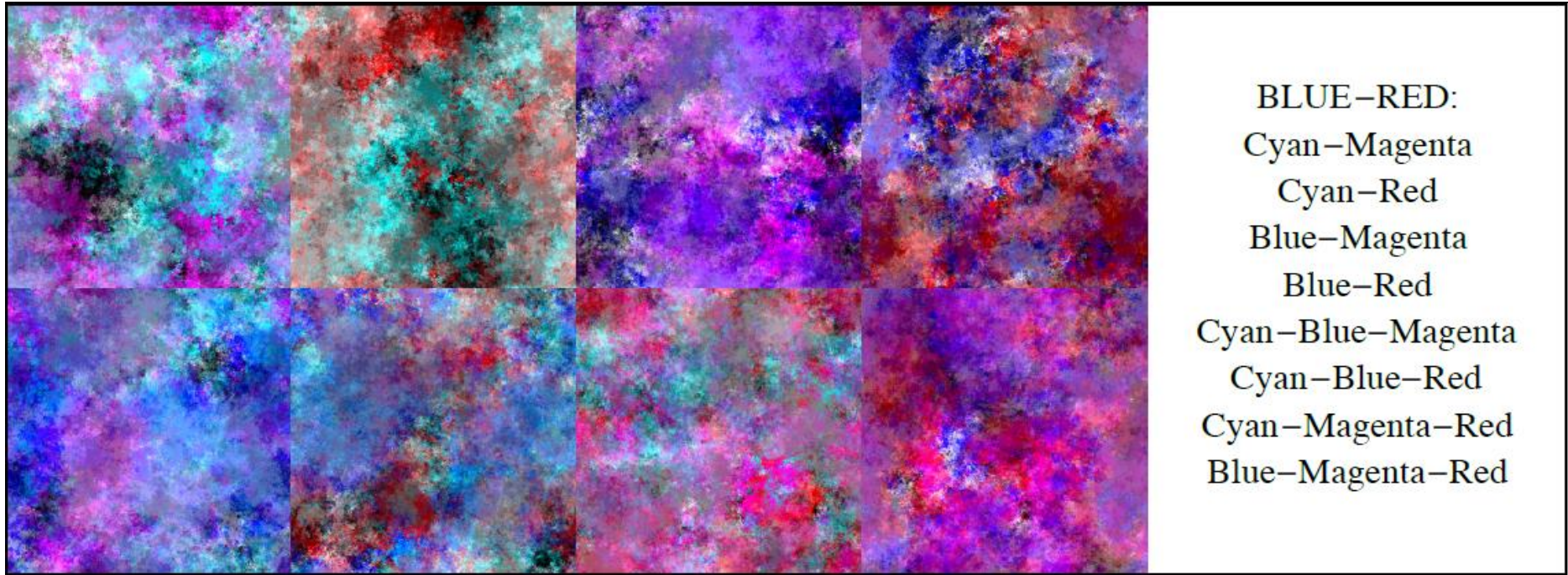
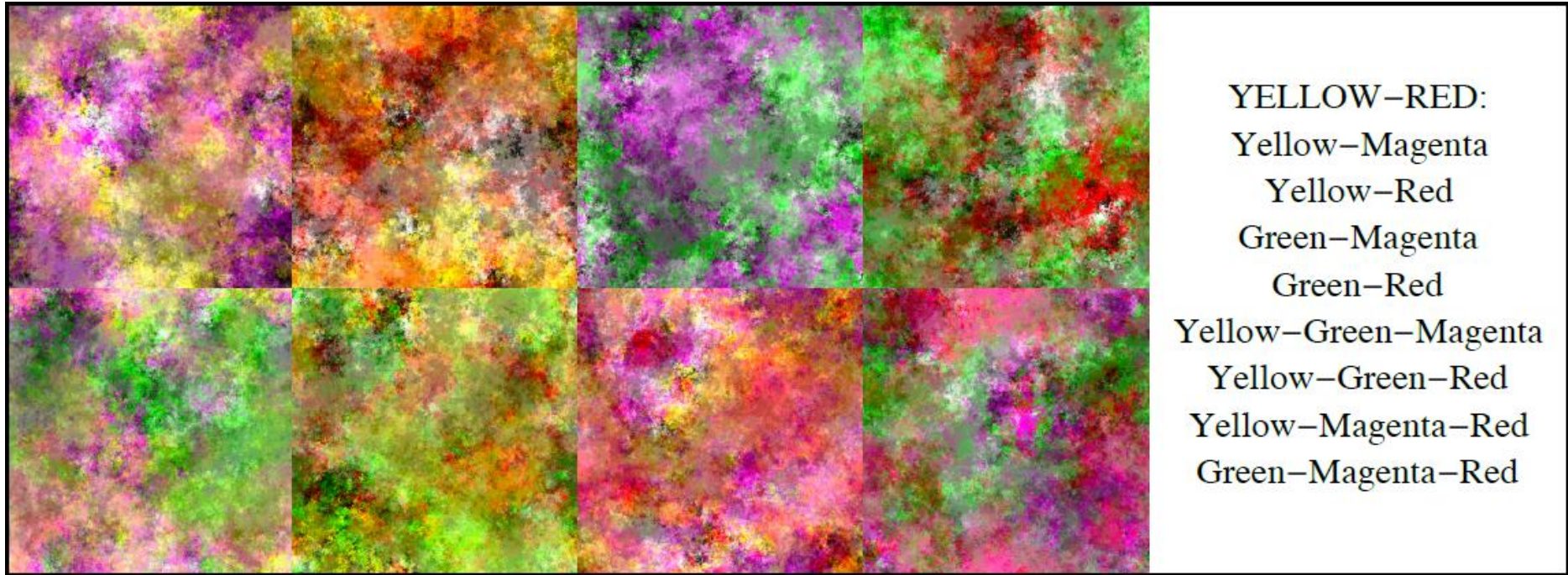


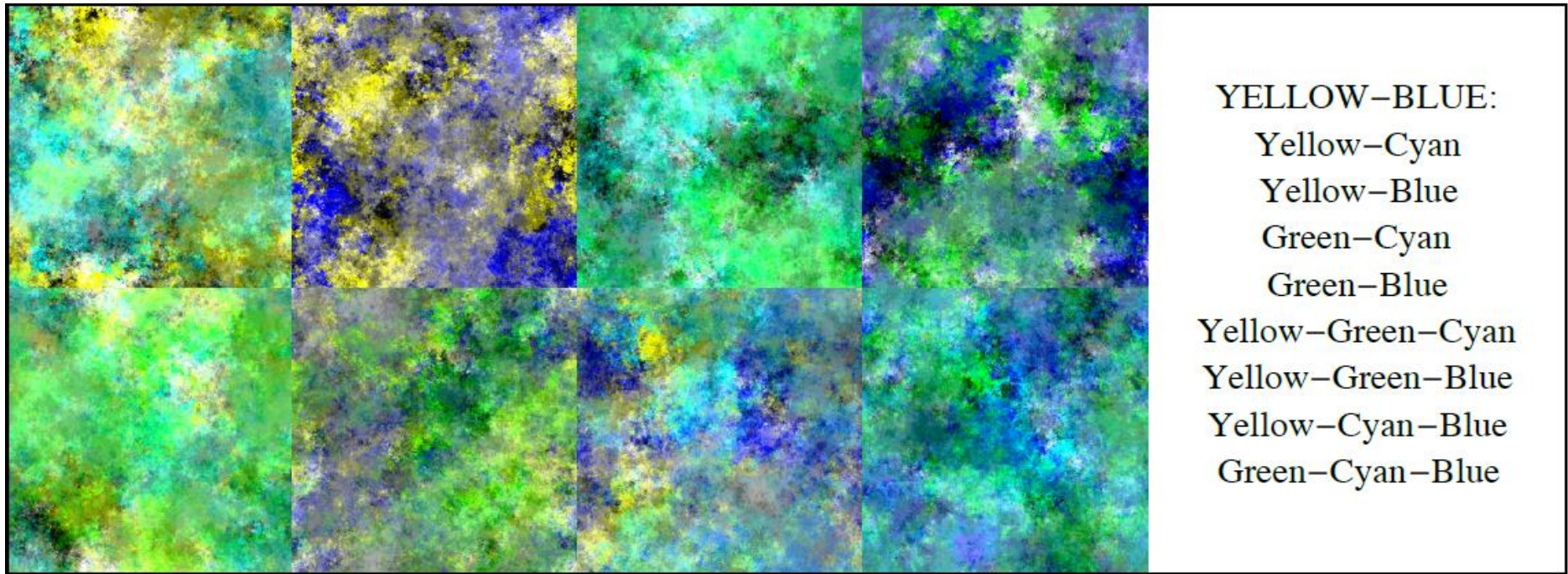
Figure 40



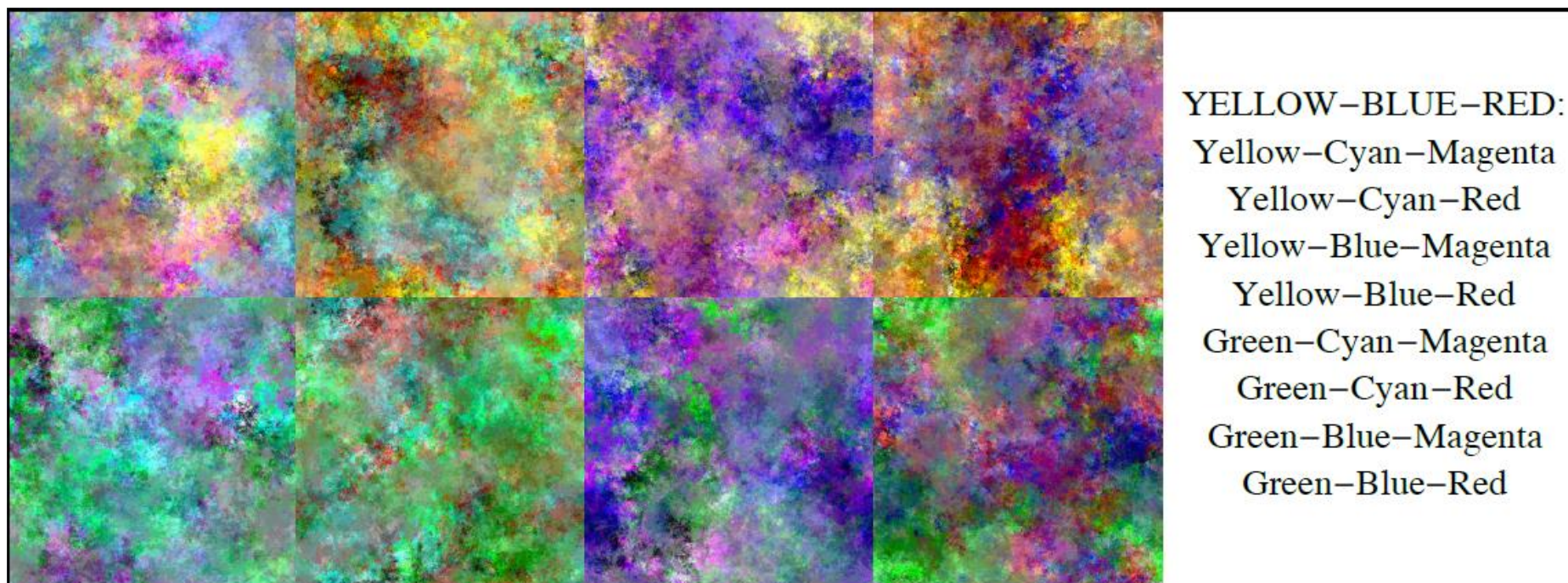
A



B



C



D

Figure 41

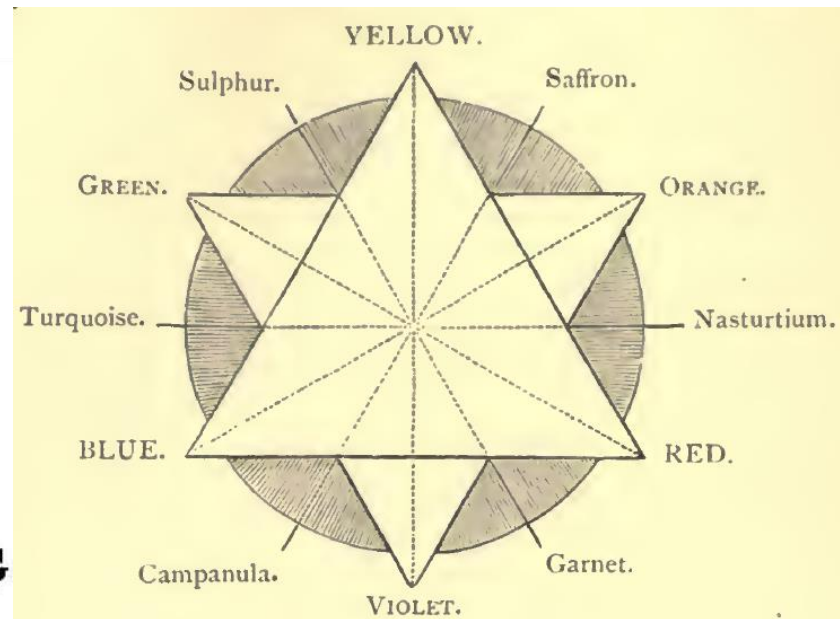
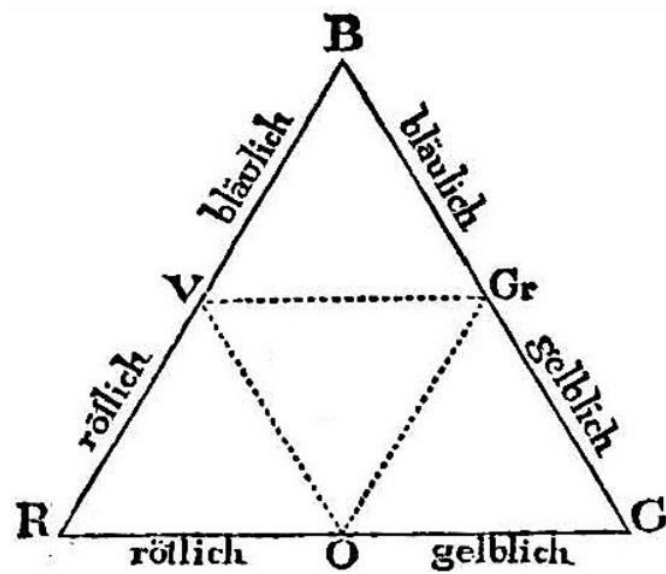


Figure 42

Aus meiner Darstellung ergibt sich folgendes Schema:

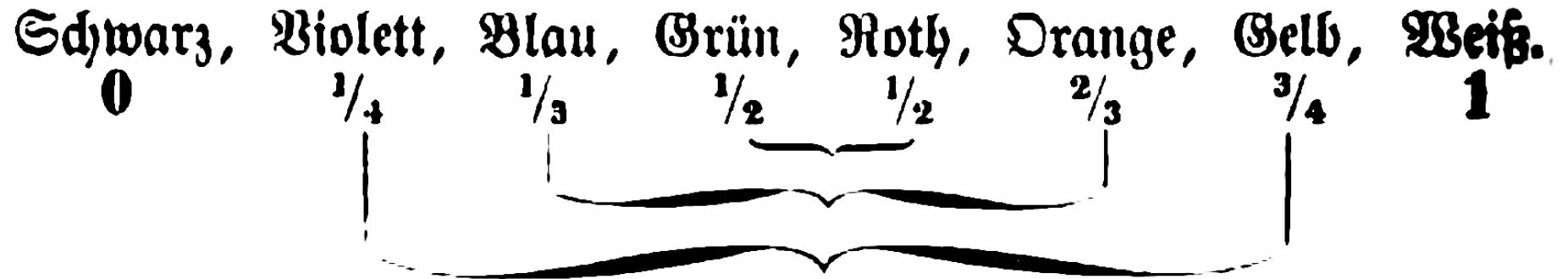


Figure 43

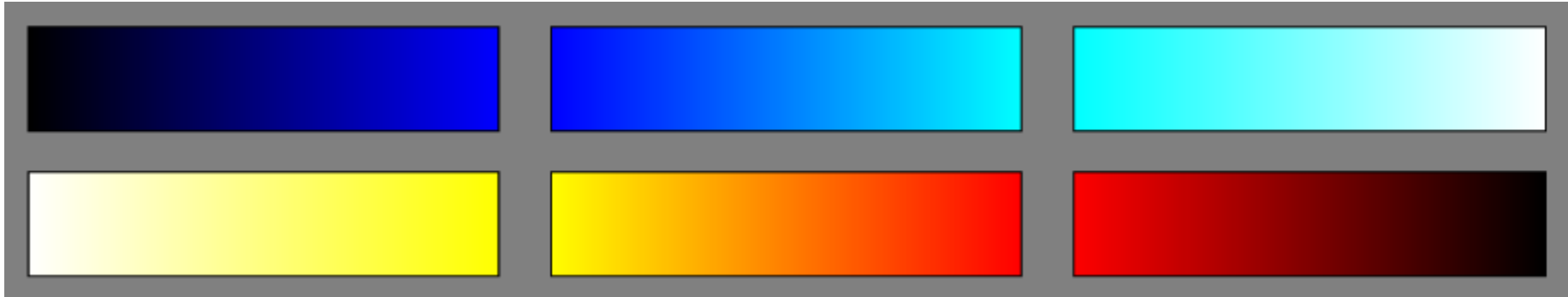


Figure 44

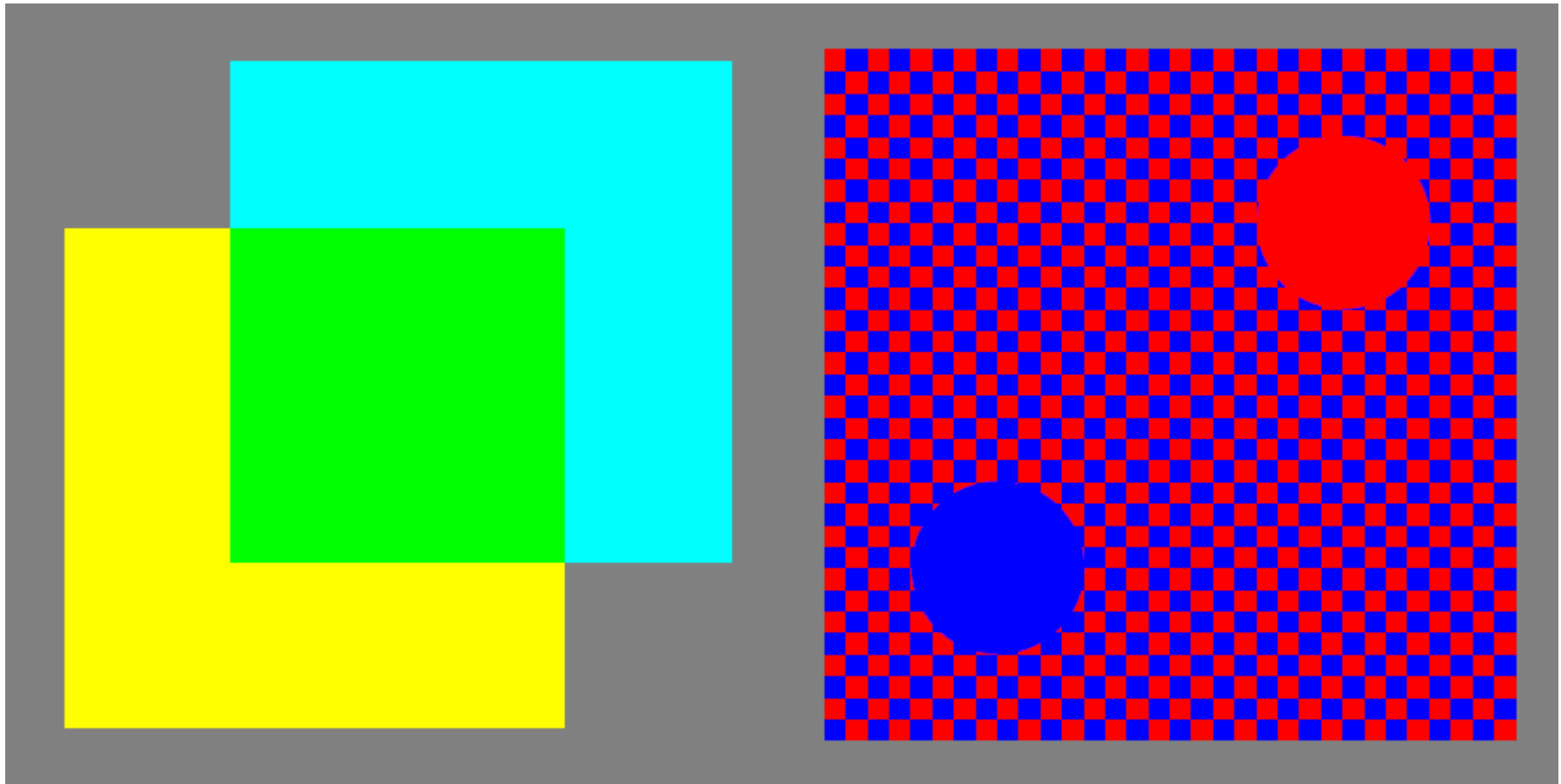


Figure 45



Figure 46

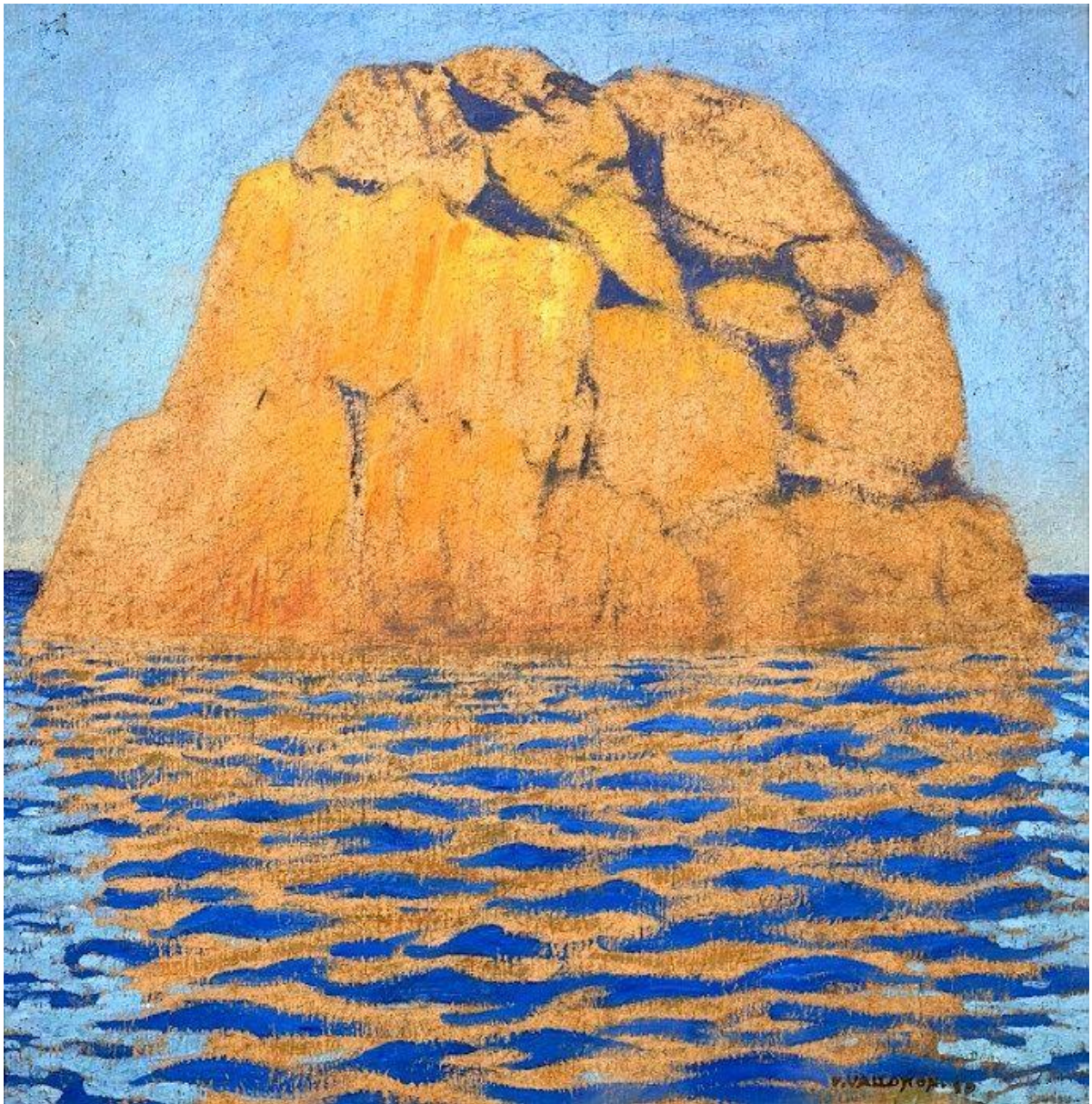


Figure 47



Figure 48



Figure 49



Figure 50



Figure 51