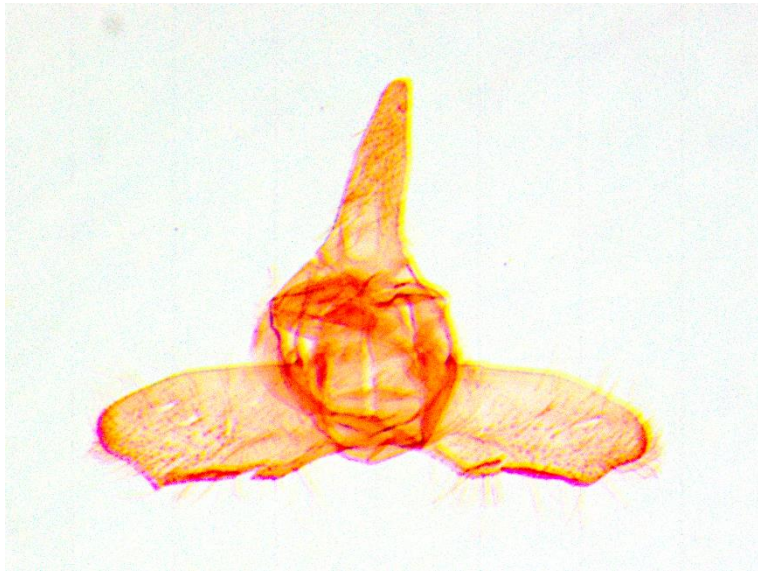
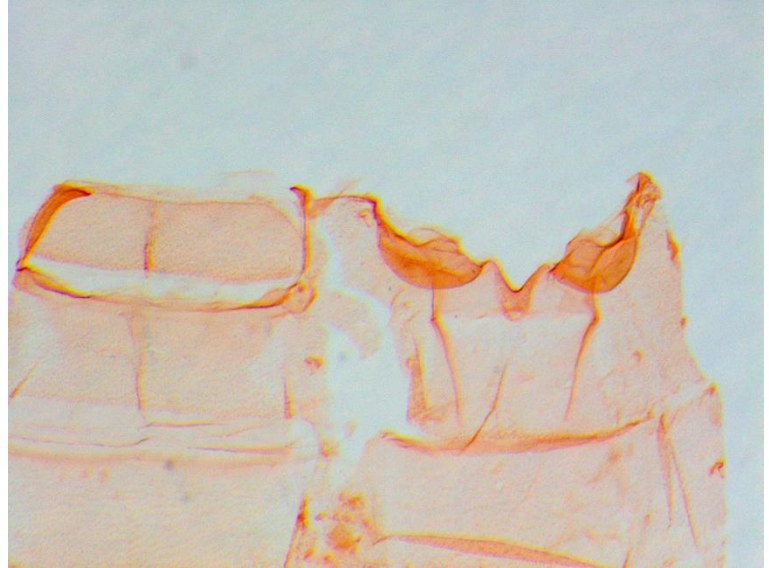
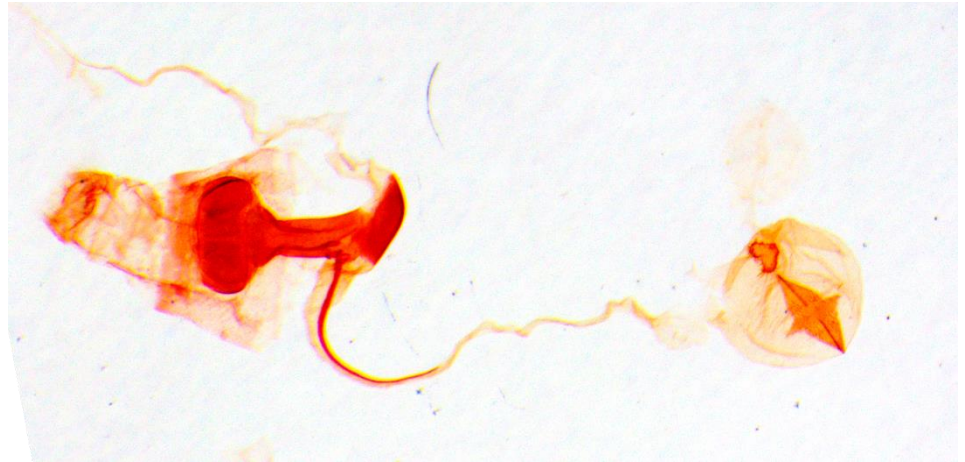


Acropentias aureus



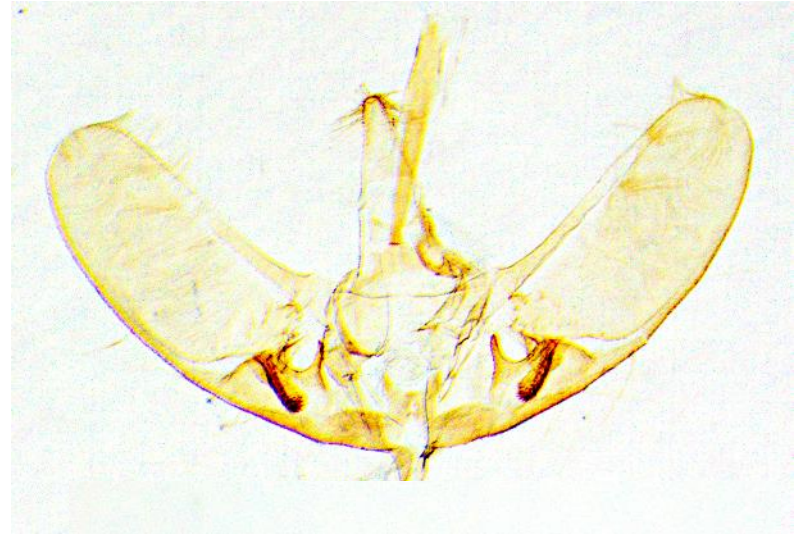
Ecpyrrhorrhoe minnehaha



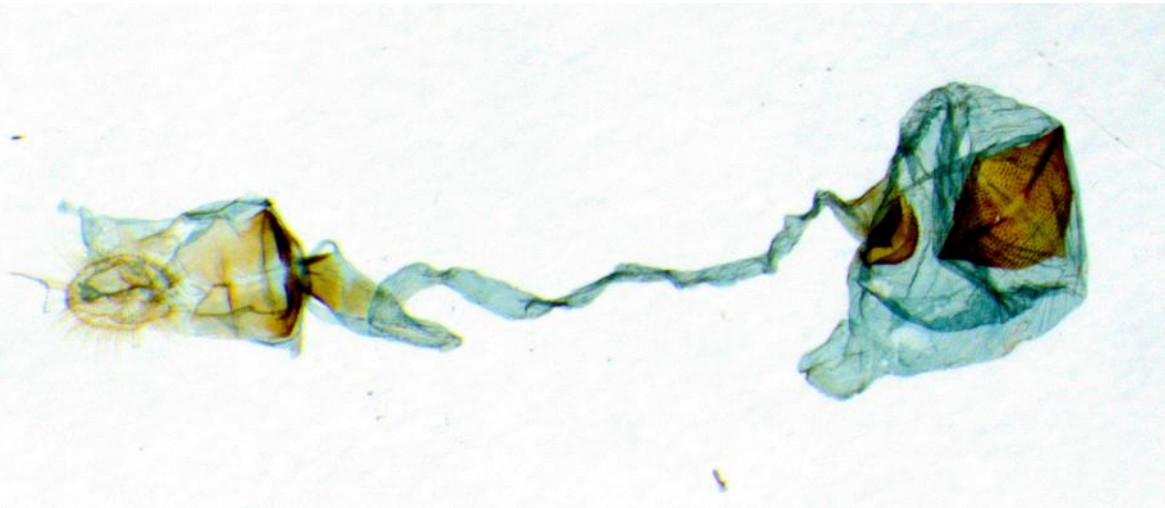
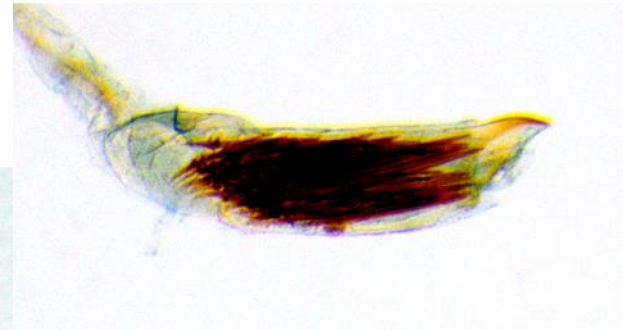
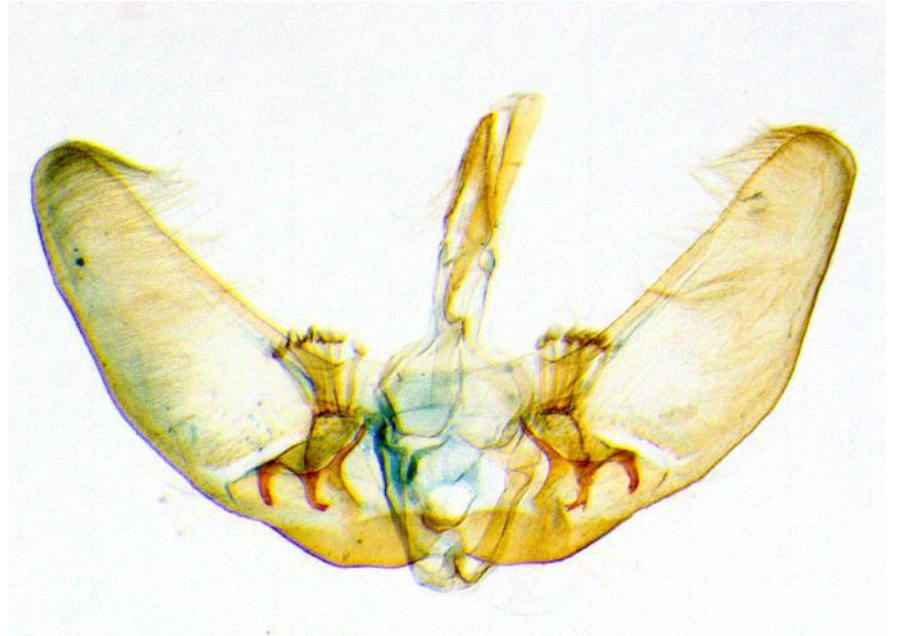
Ecpyrrhorrhoe puralis (*Paliga ochrealis*)



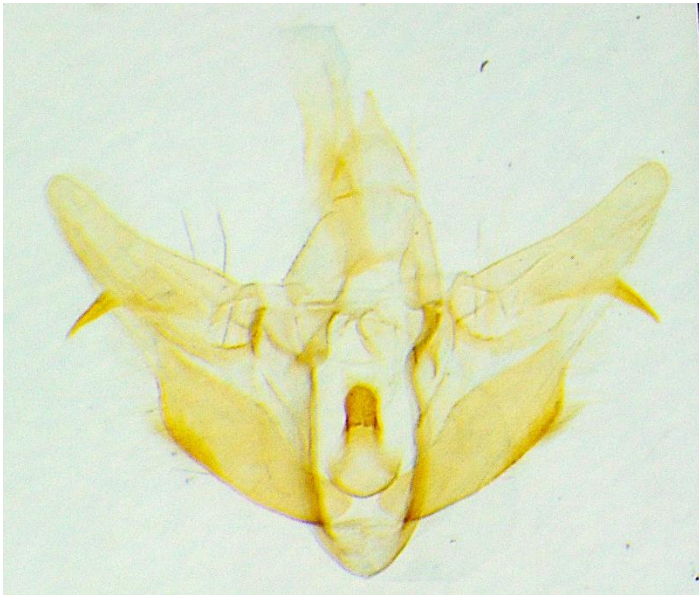
Yezobotys dissimilis



Demobotys pervulgalis



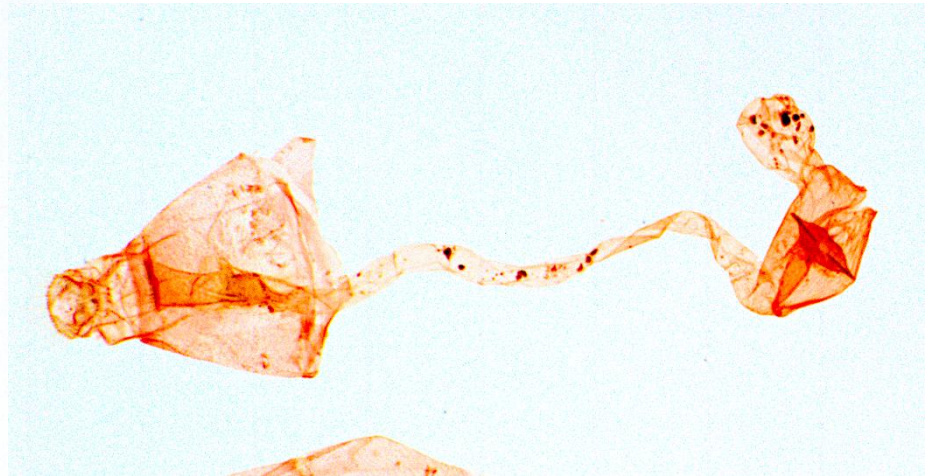
Prodasycnemis inornata



Paratalanta taiwanensis



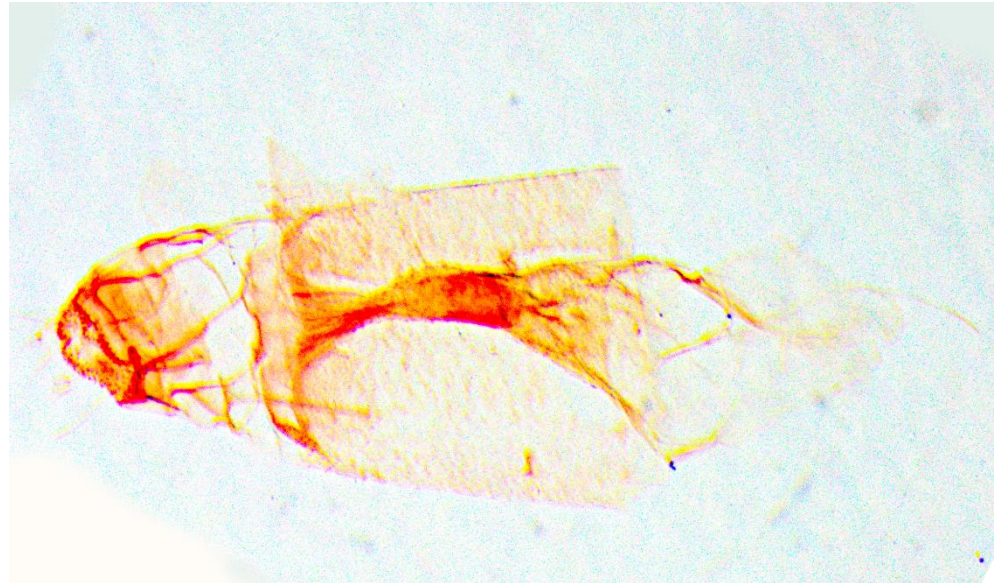
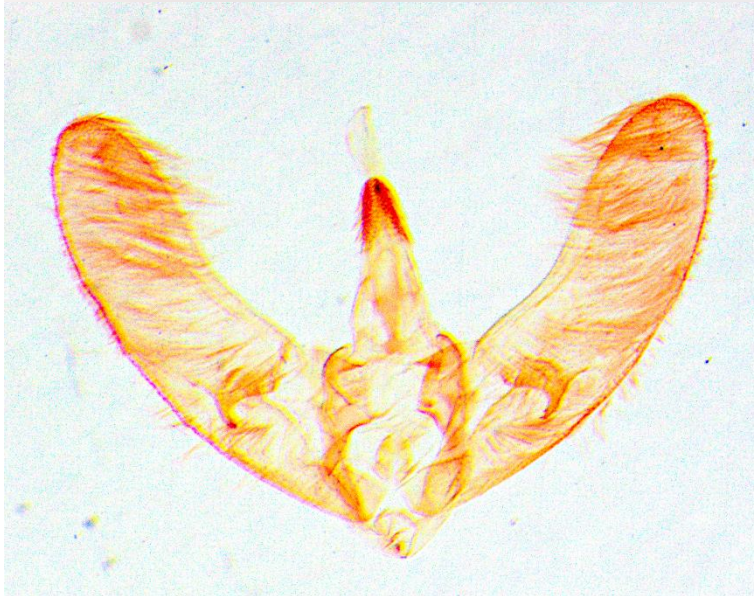
Paratalanta pandalis



Lamprophaia albifimbrialis



Daulia nr. afralis



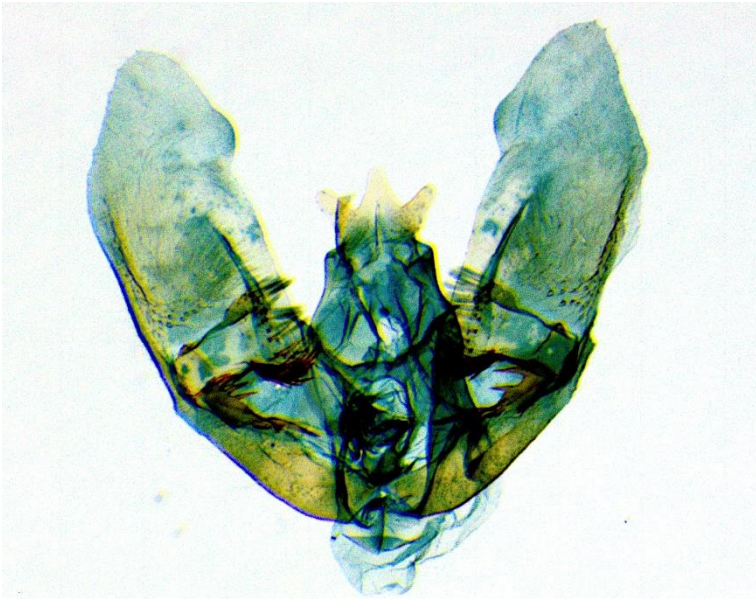
Pagyda quinquelineata



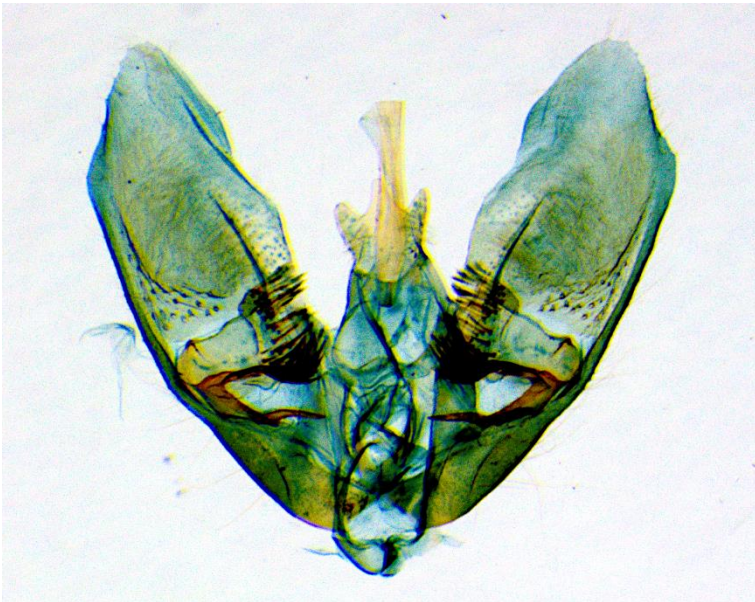
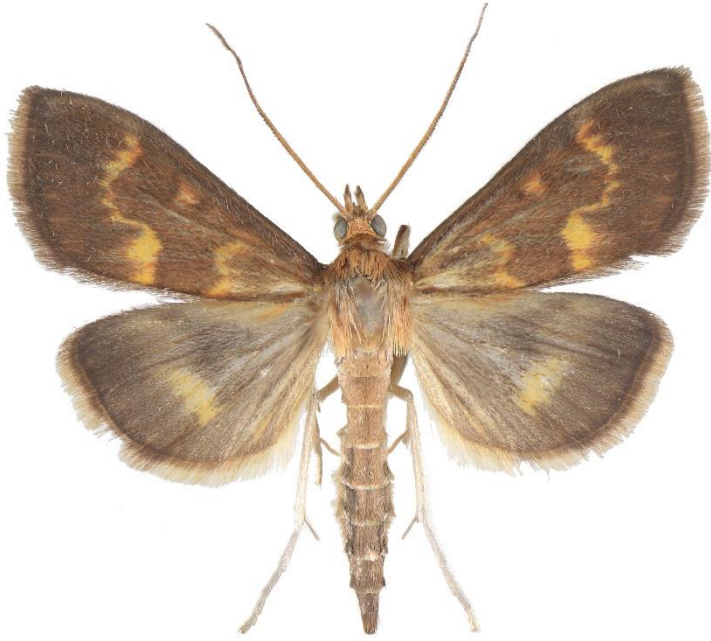
Pagyda quadrilineata



Ostrinia furnacalis



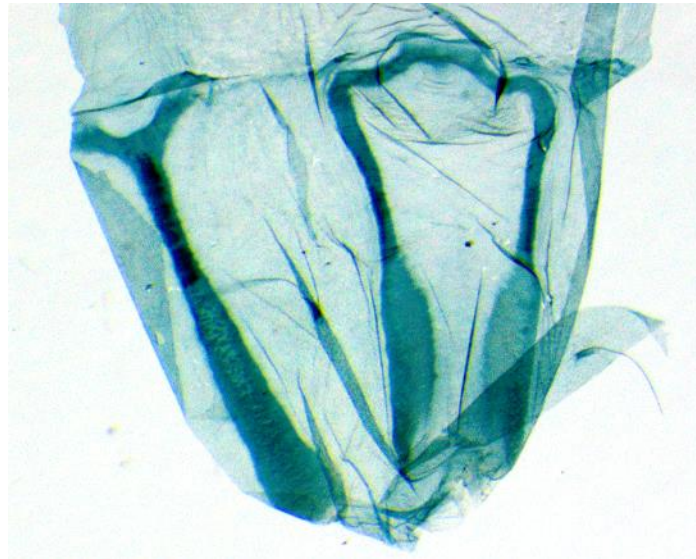
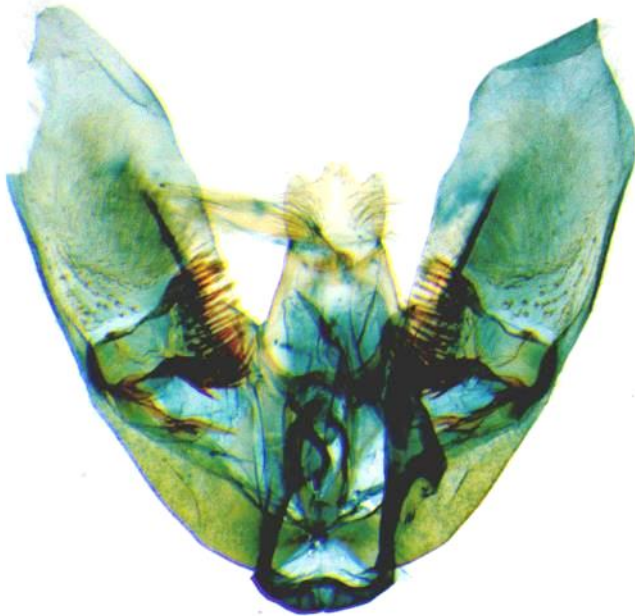
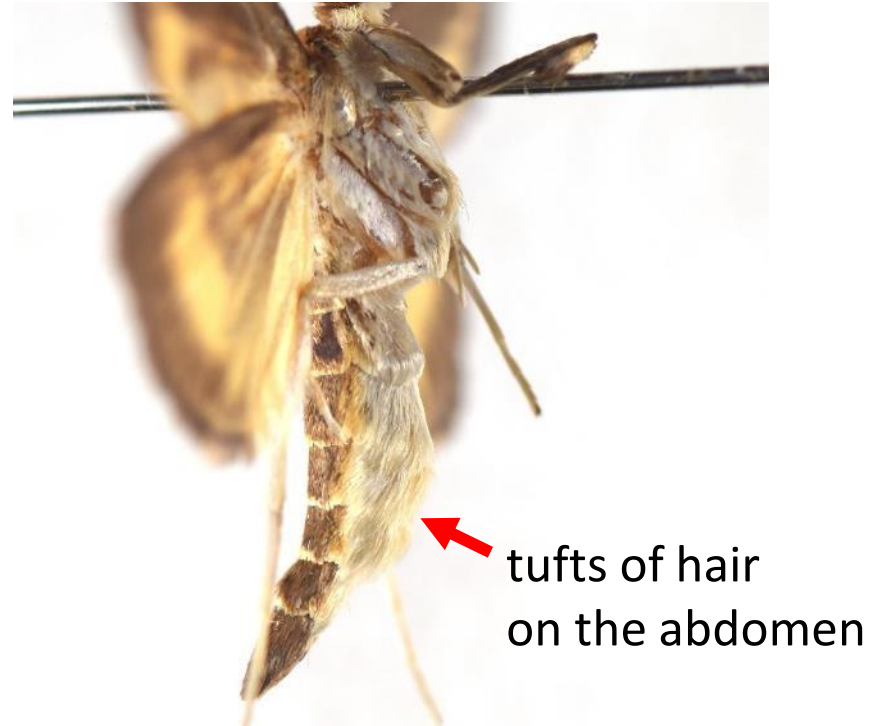
Ostrinia scapulalis



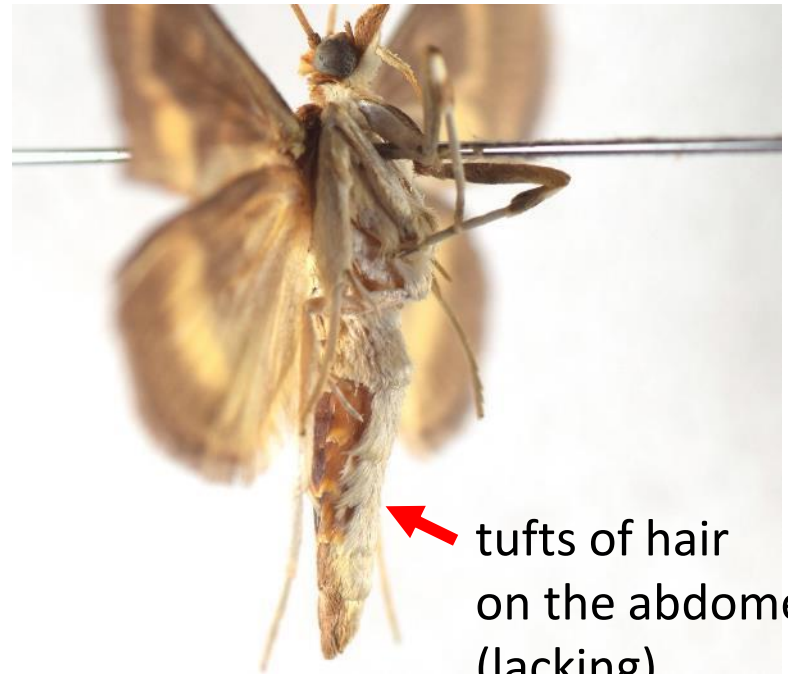
Ostrinia orientalis



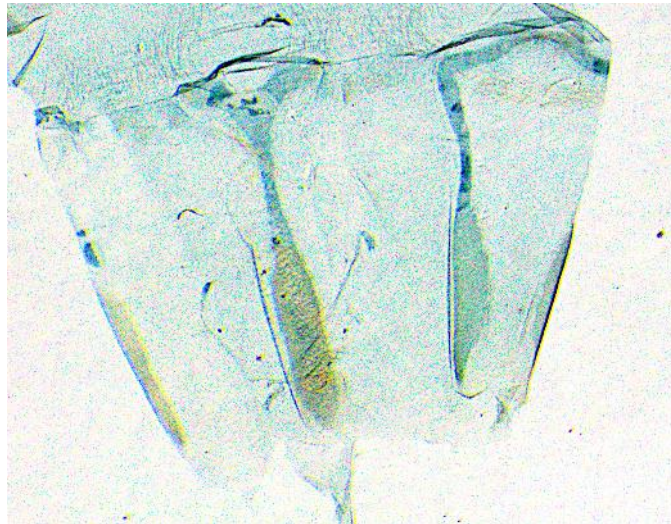
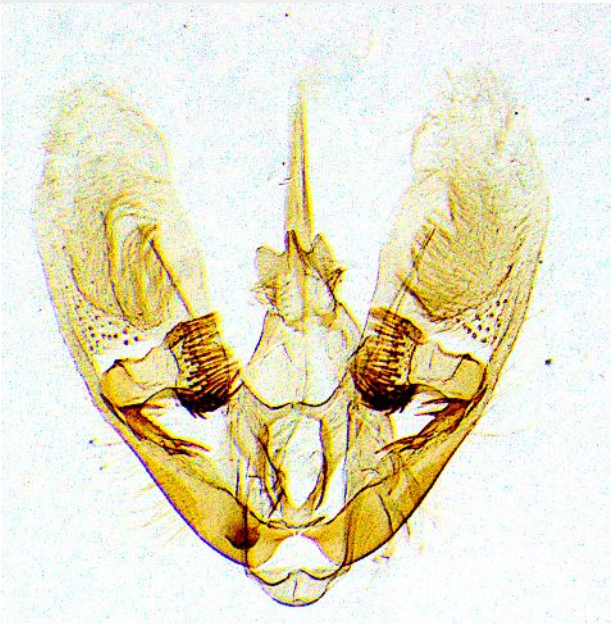
Ostrinia zaguliaevi



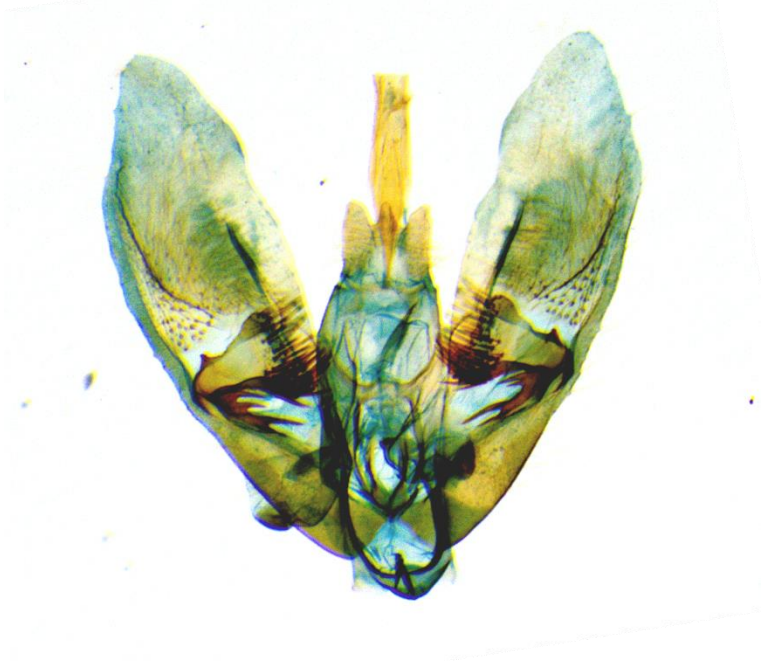
Ostrinia nr. zaguliaevi



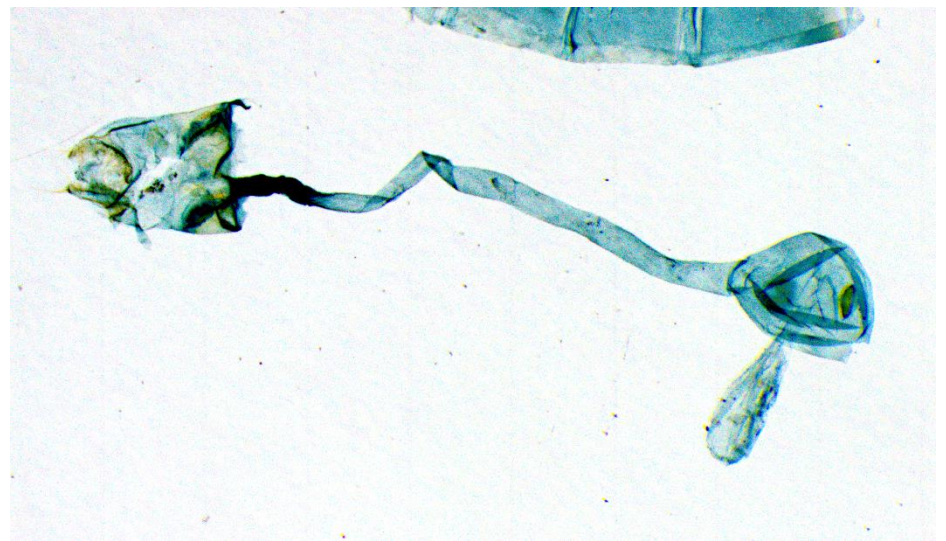
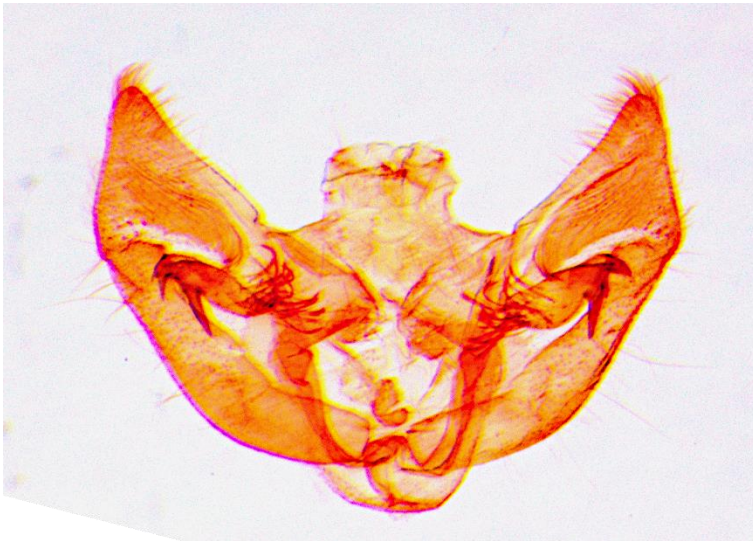
tufts of hair
on the abdomen
(lacking)



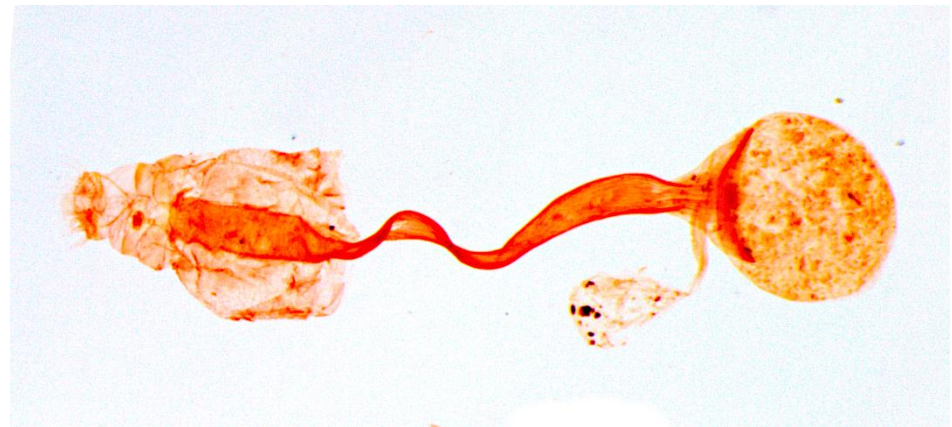
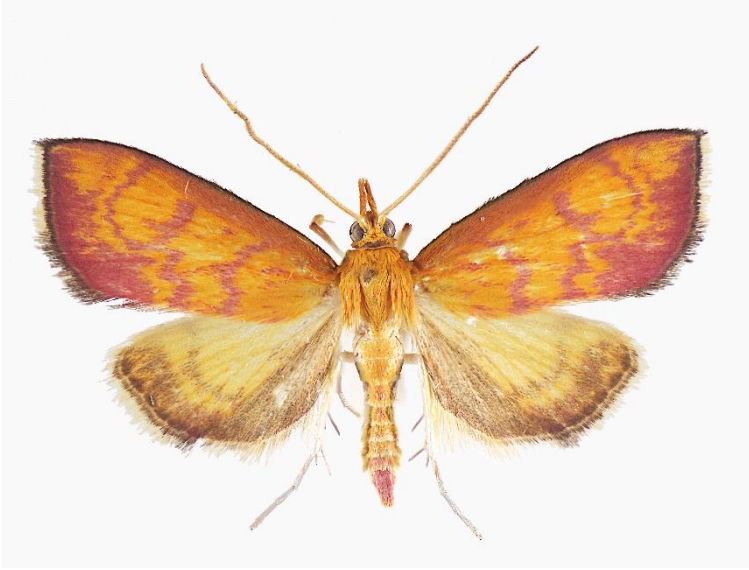
Ostrinia zealis



Aurorobotys aurorina



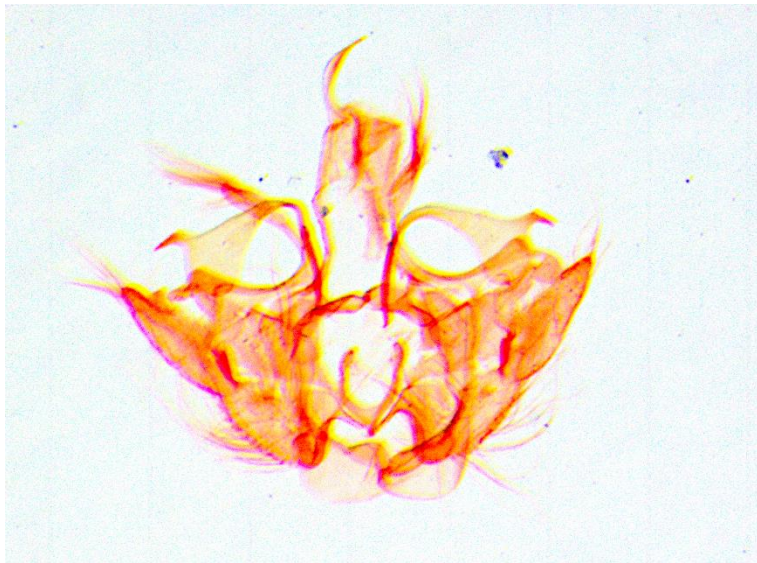
Carminibotys carminalis



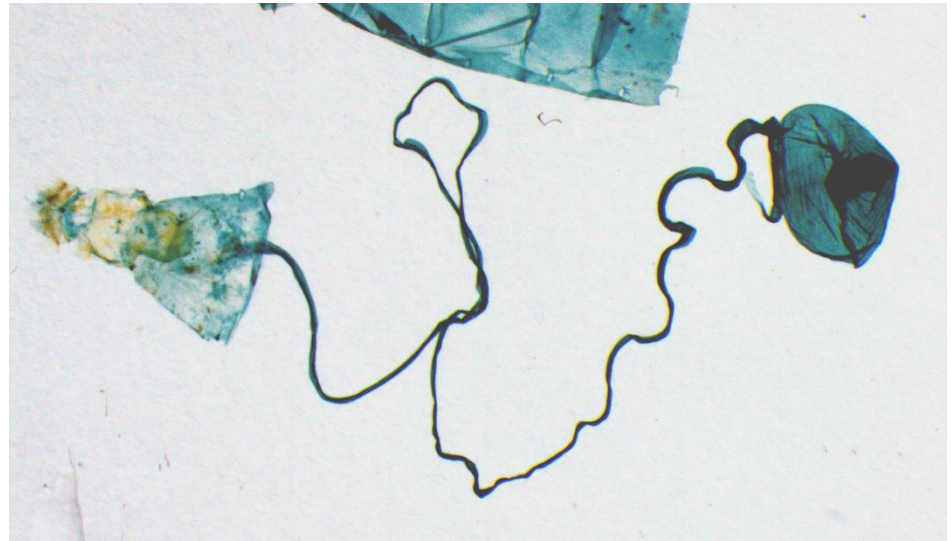
Mabra eryxalis



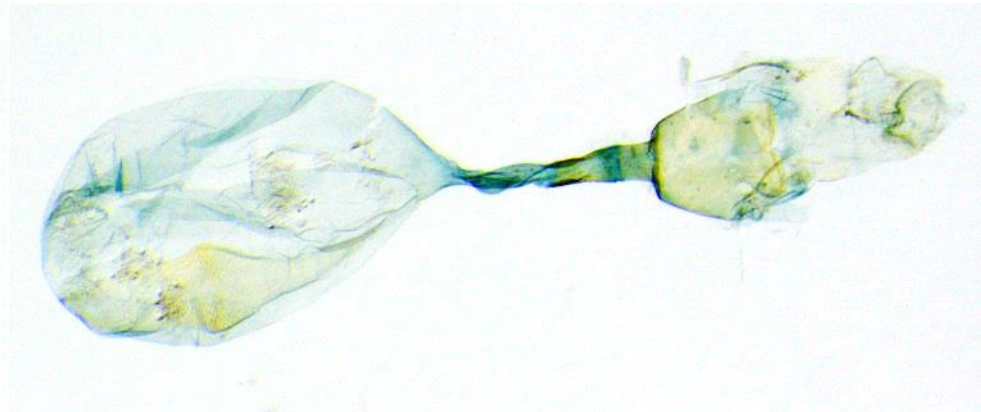
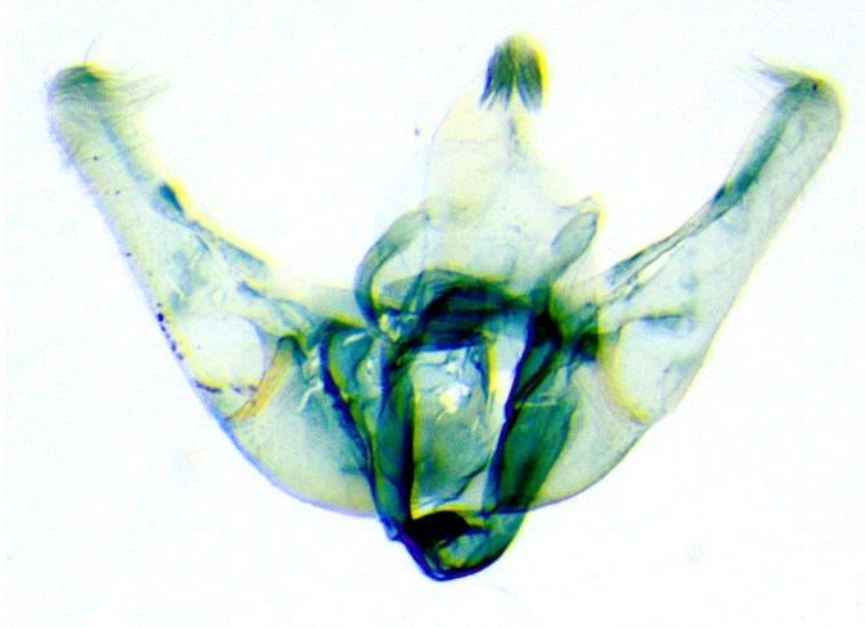
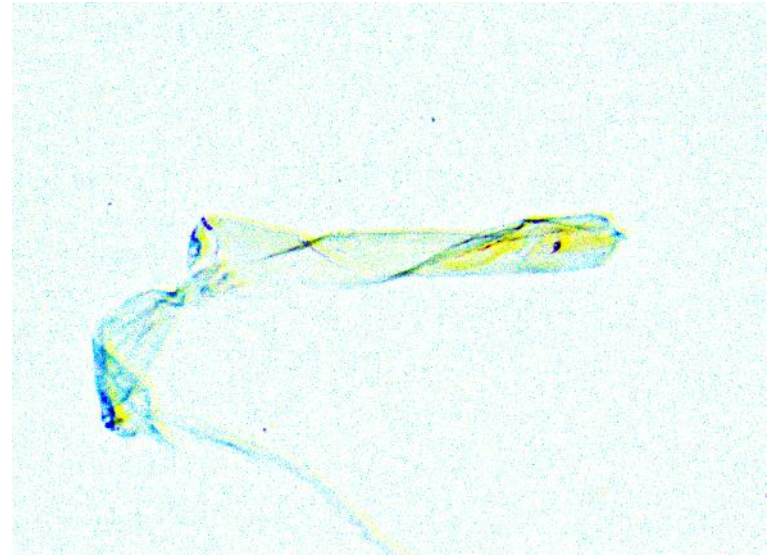
Hyalobathra undulinea



Tetridia caletoralis



Udea testacea



Udea nebulatalis



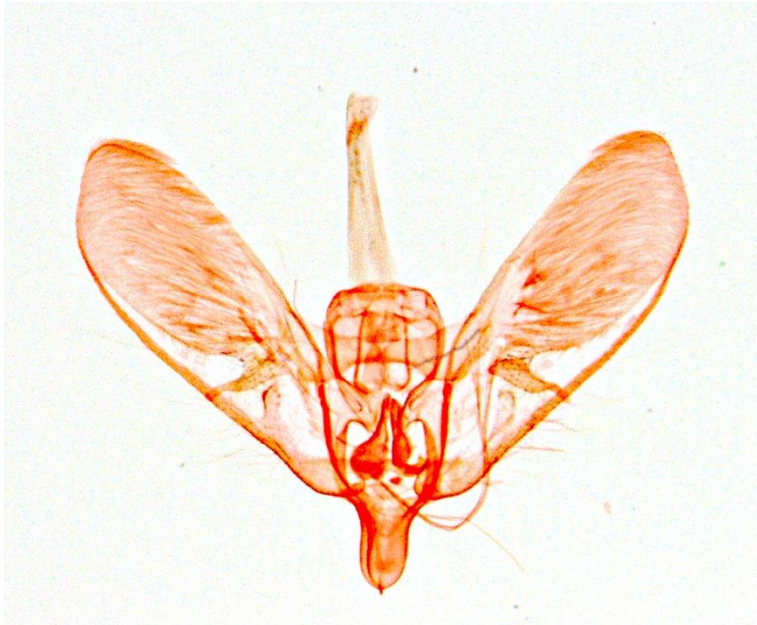
Togabotys fuscolineatalis



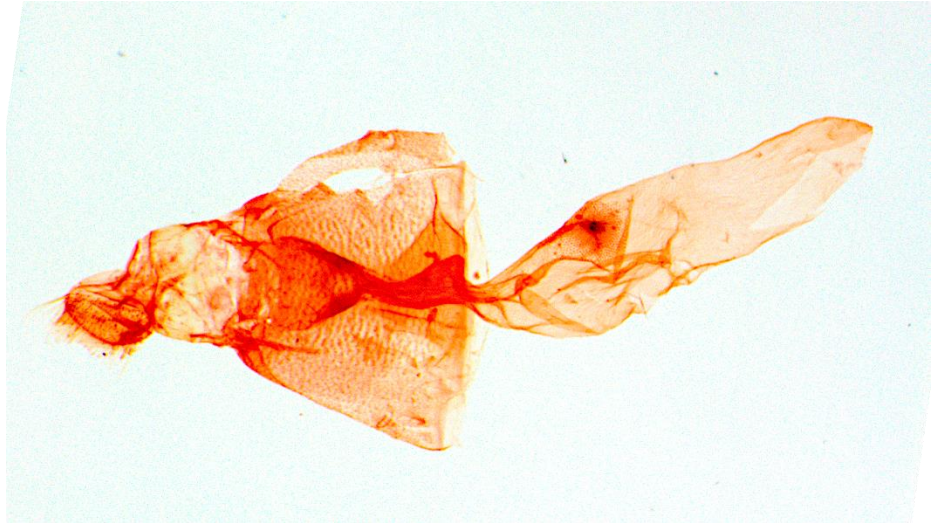
Cotachena nr. alysoni



Patania expictalis



Rehimena surusalis



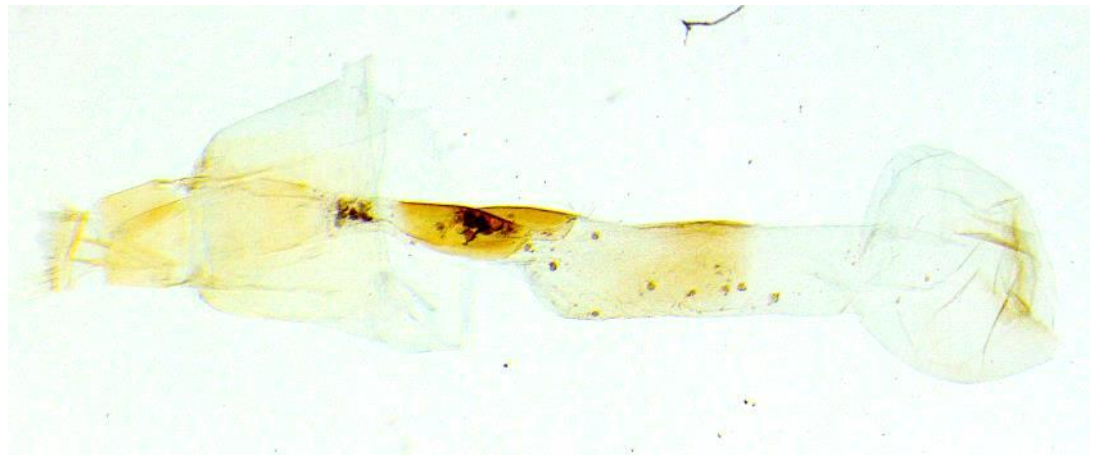
Patania characteristica



Patania harutai



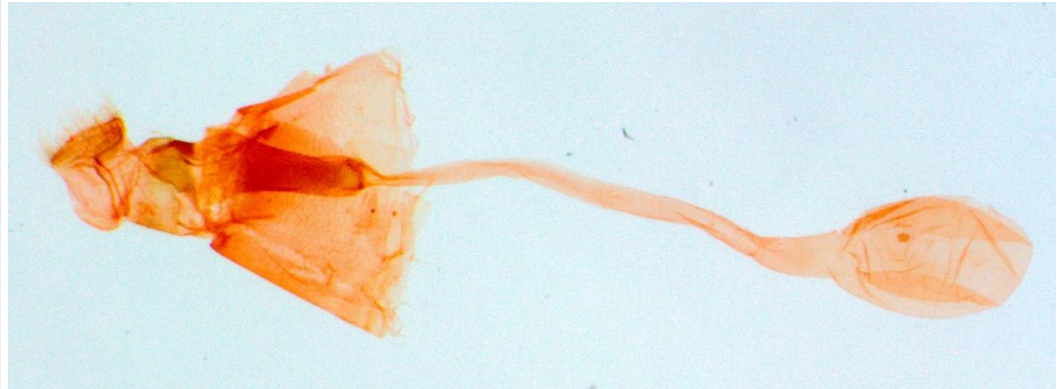
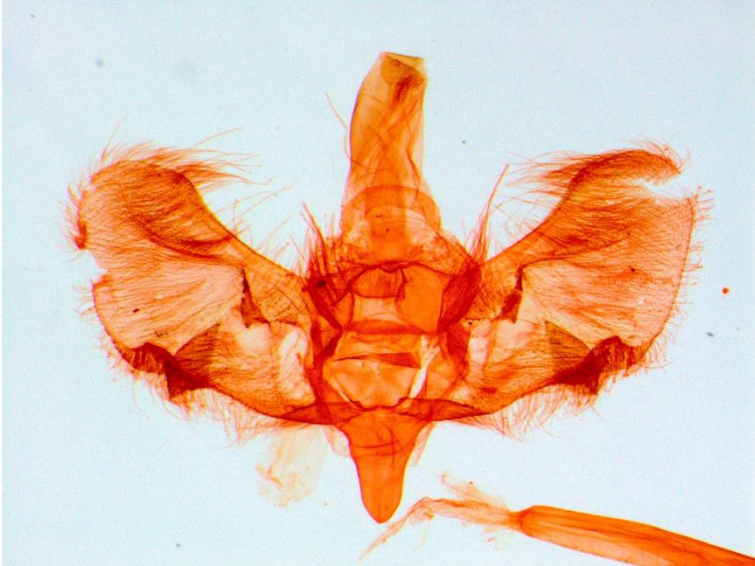
Patania balteata



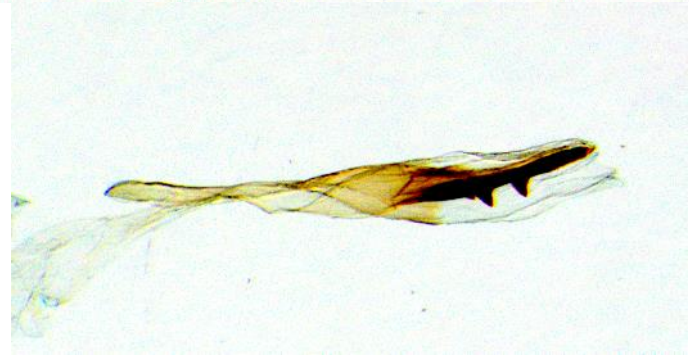
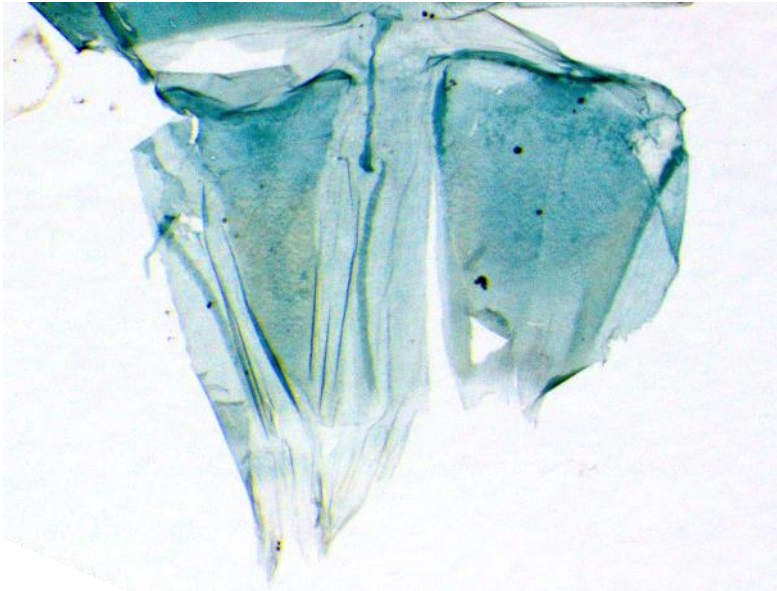
Nosophora semitritalis



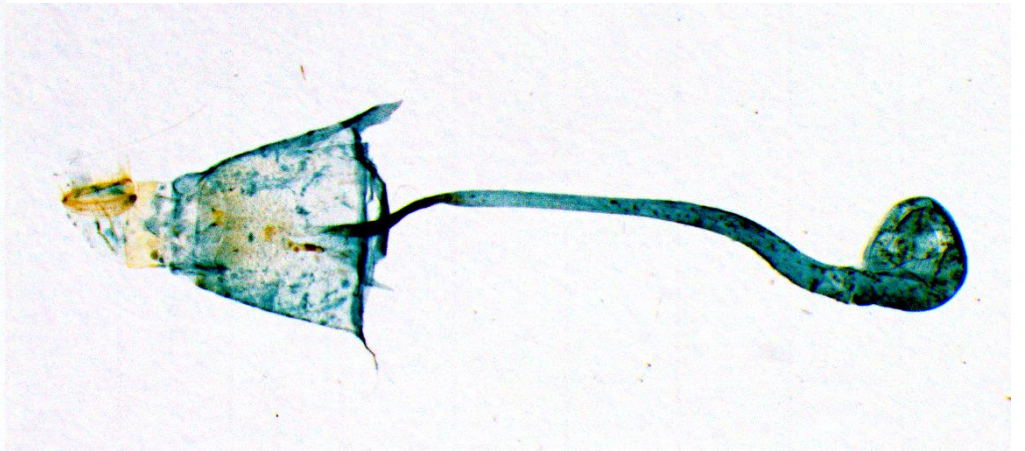
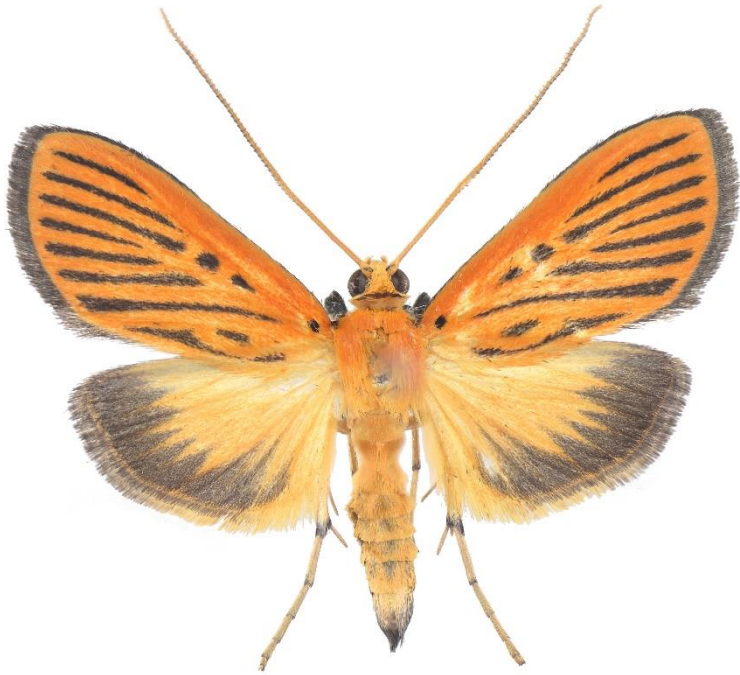
Patania plagiatalis



Patania ultimalis



Tyspanodes striata



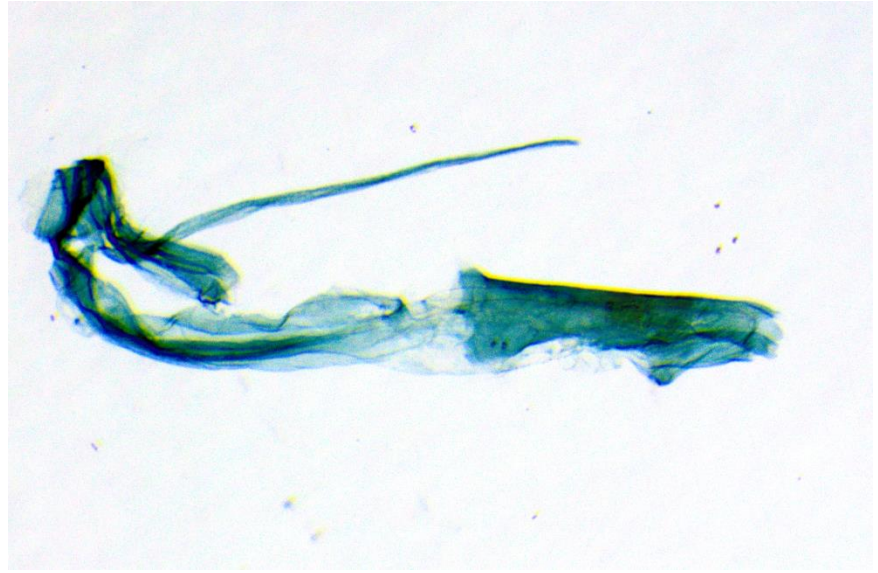
Nebrina procopia



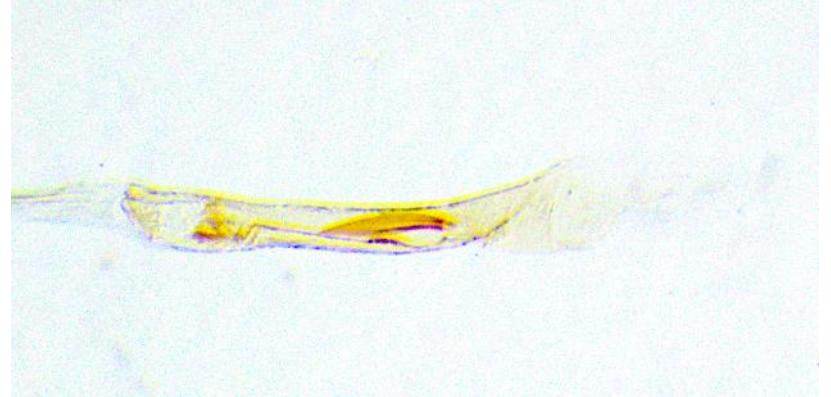
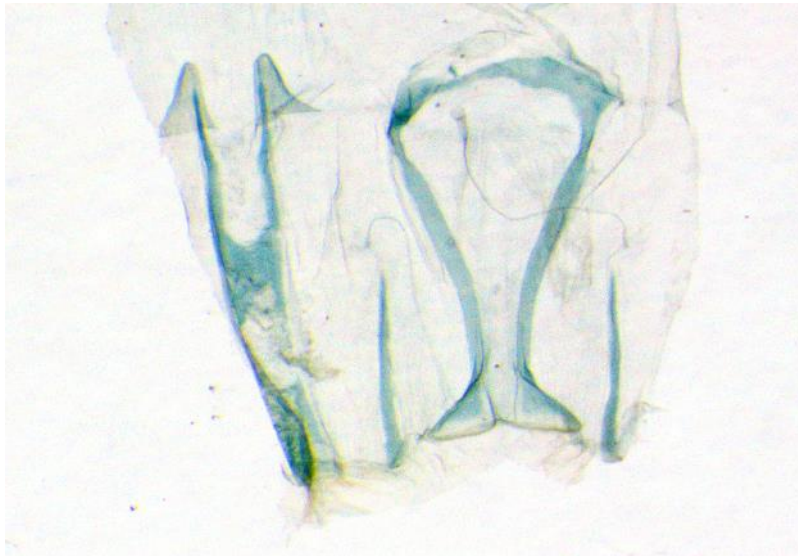
Caldubotys caludusalis



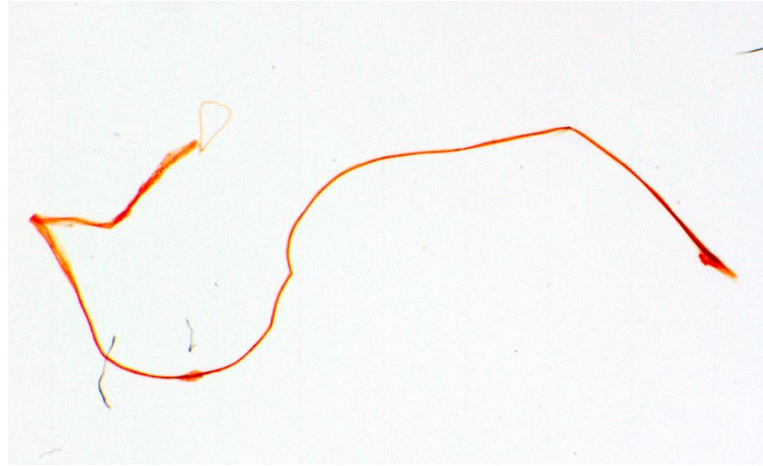
Glyphodes nr. actorionalis



Glaucanoe deductalis



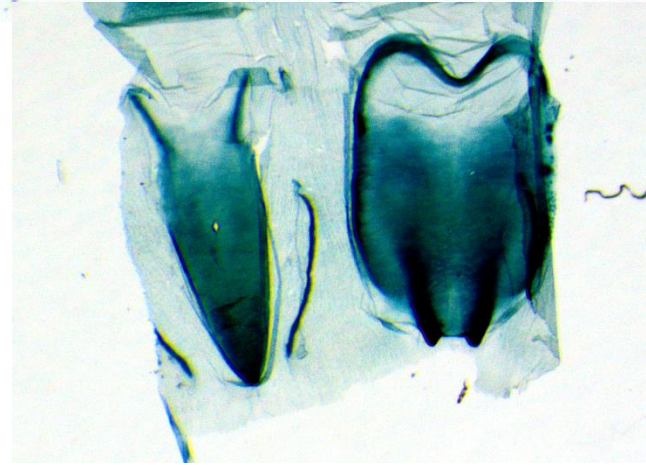
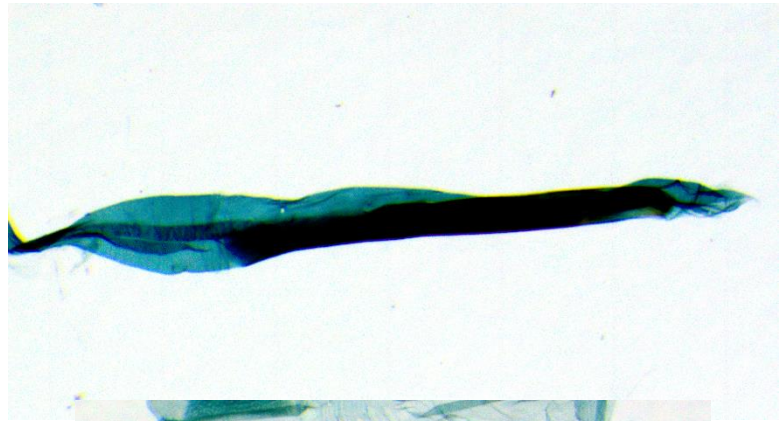
Talanga nympa



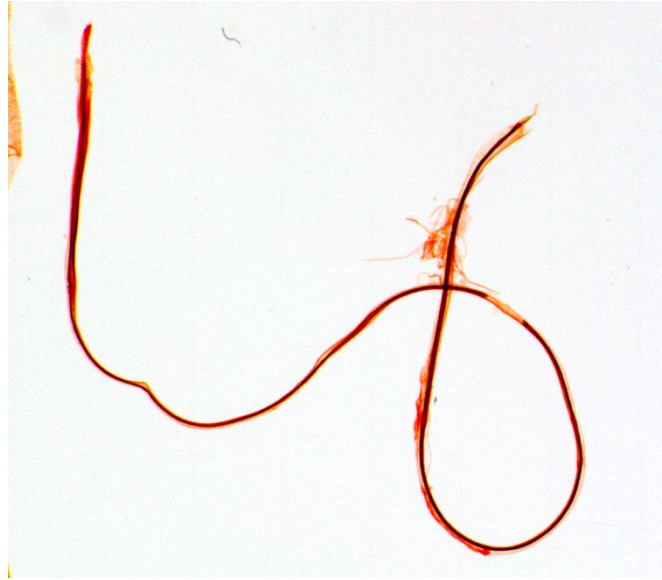
Glyphodes nr. bivitralis



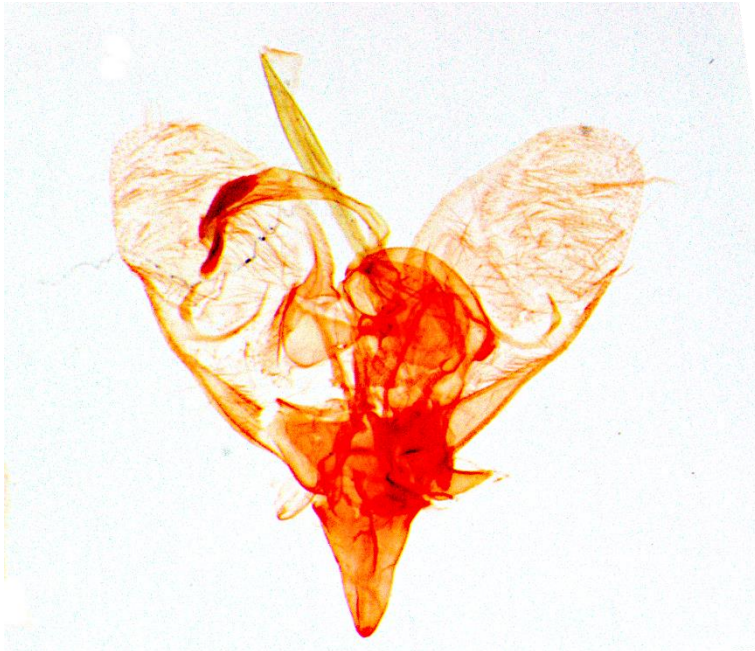
Chabula telphusalis



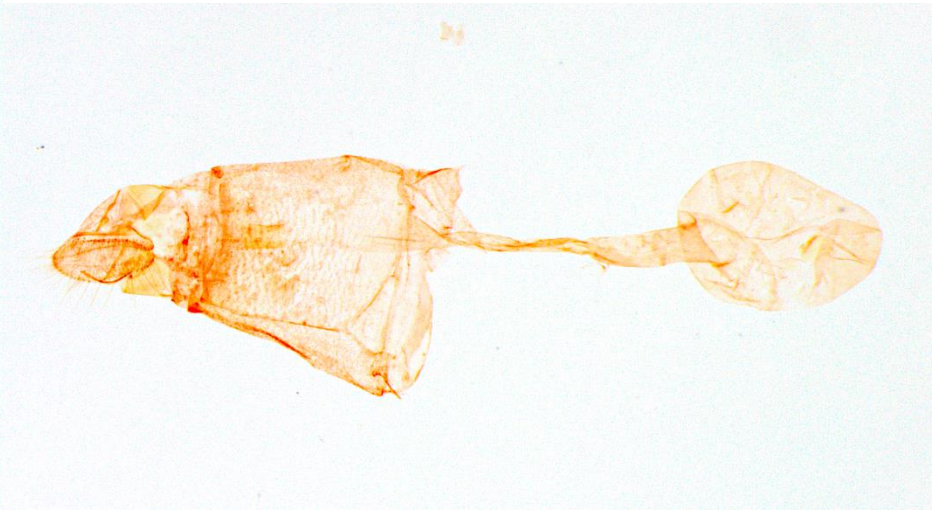
Glyphodes quadrimaculalis



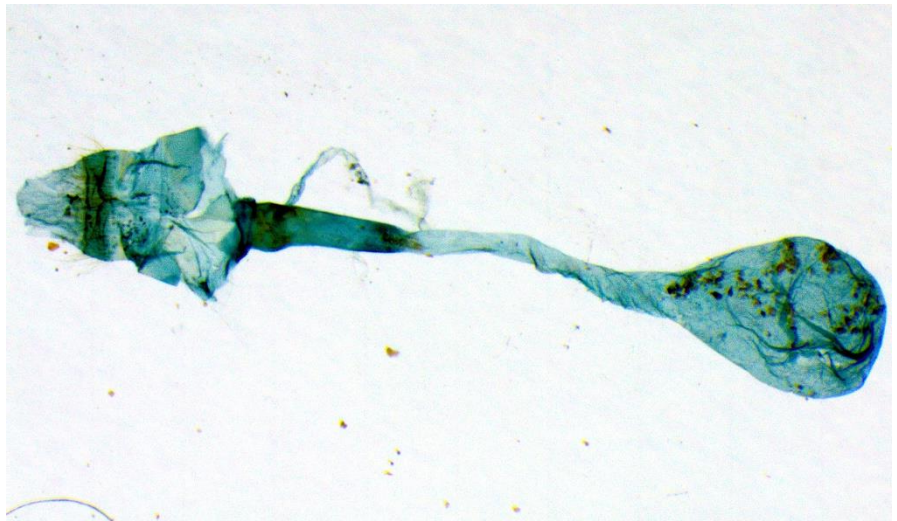
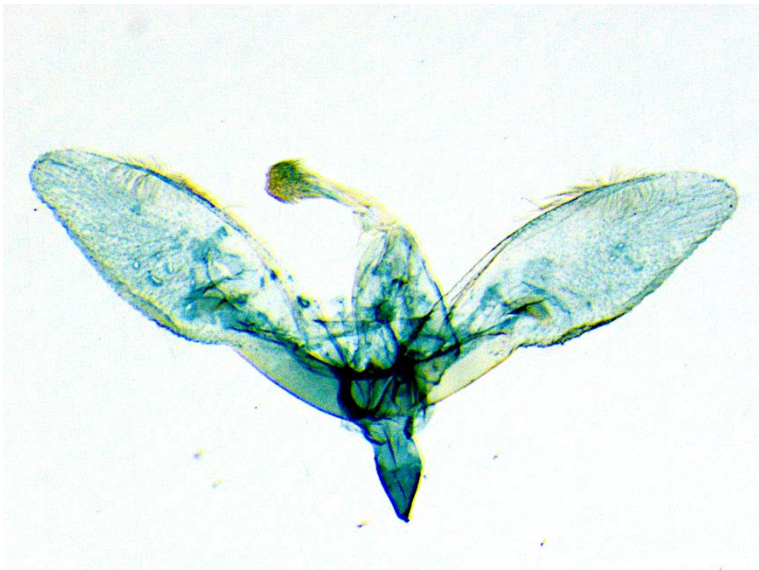
Omiodes misera



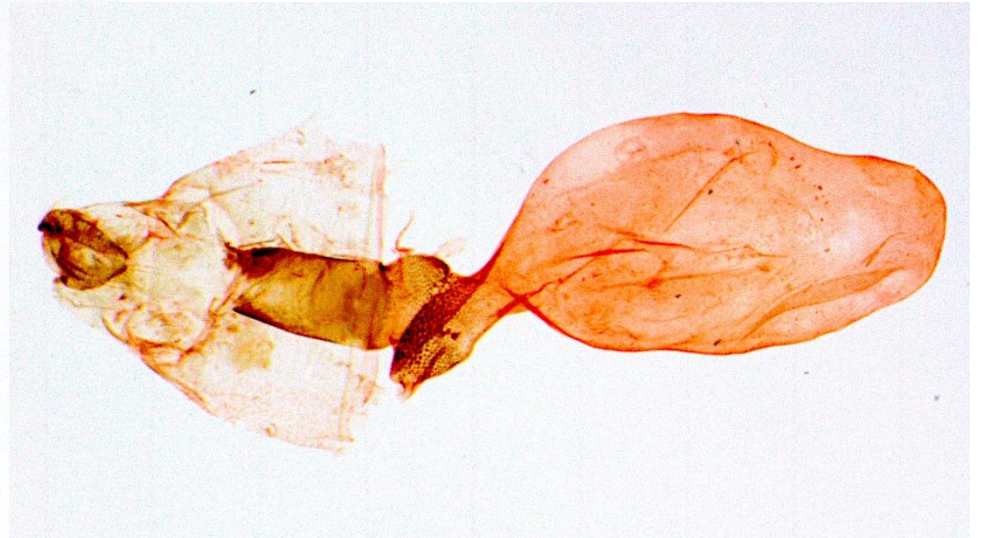
Omiodes indistincta



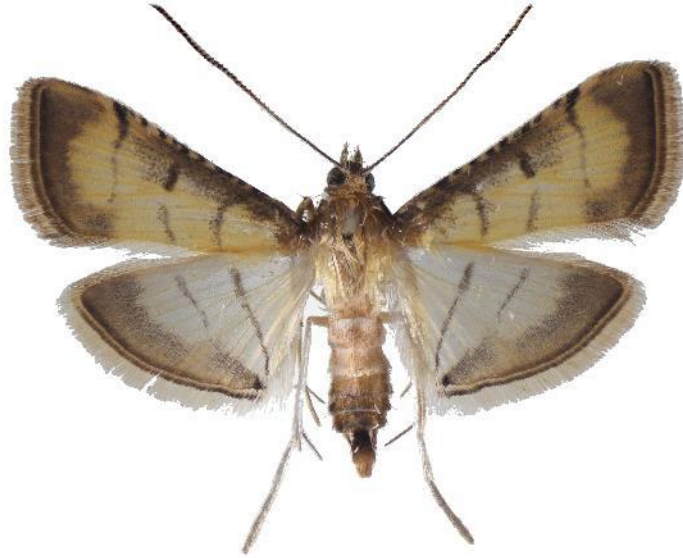
Polythlipta liquidalis



Patania deficiens



Marasmia poeyalis



Ceratarcha umbrosa



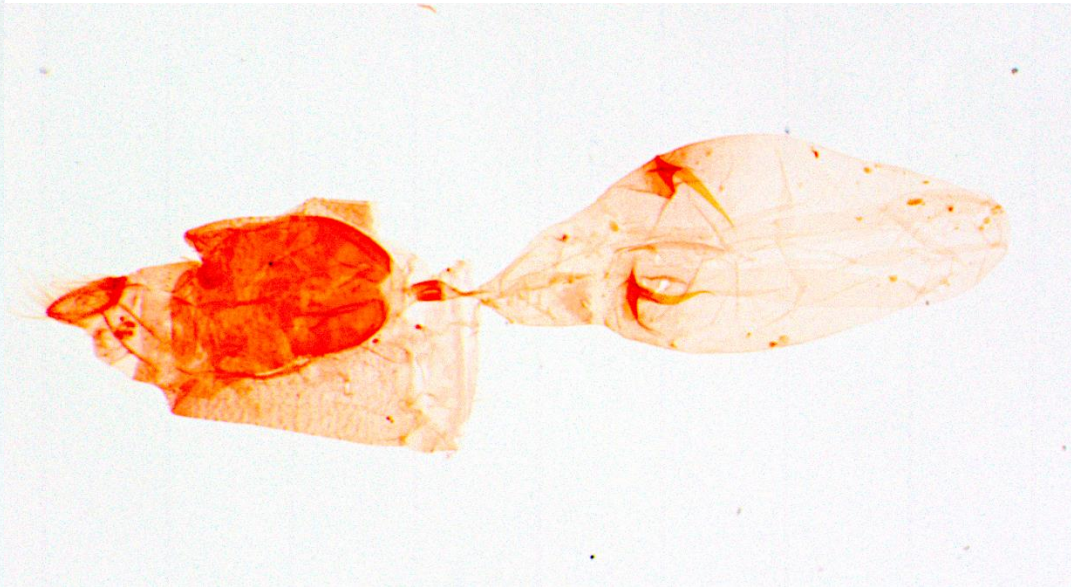
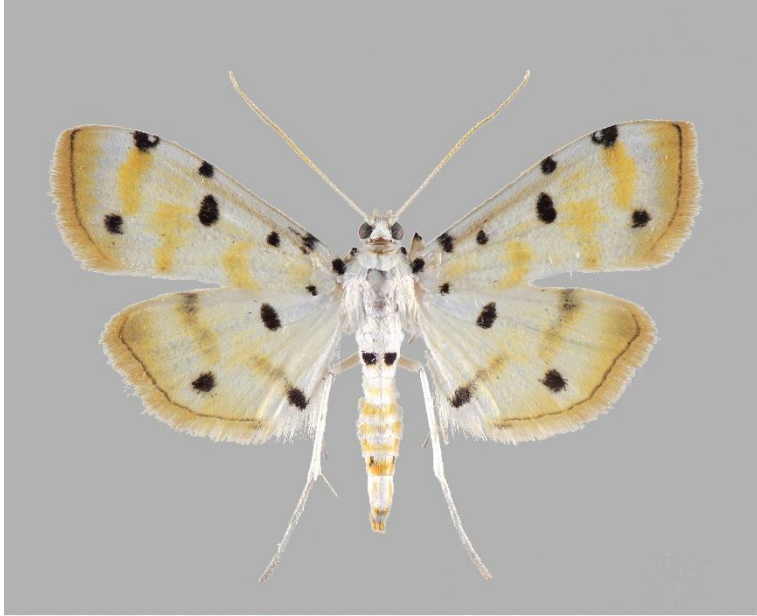
Syllepte fuscomarginalis



Syllepte taiwanalis



Pycnarmon lactiferalis



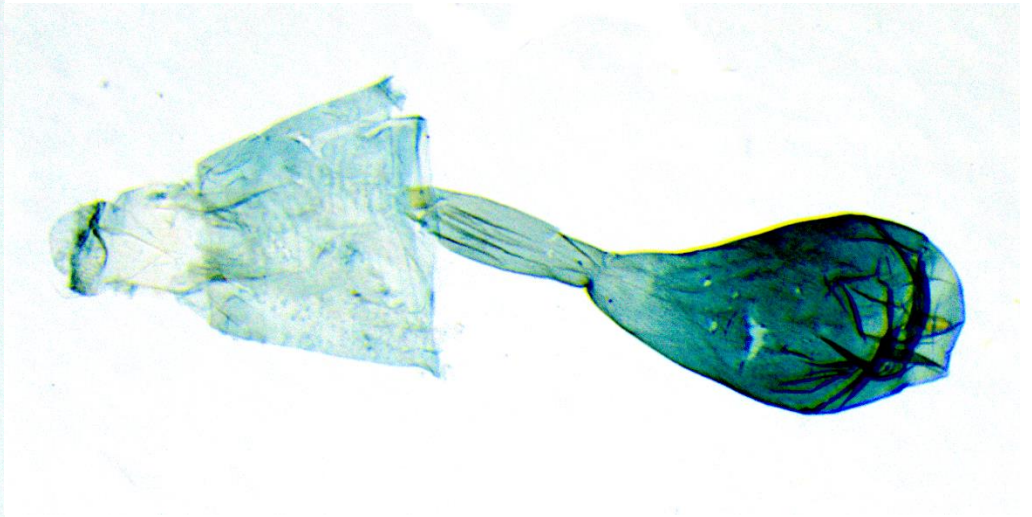
Preneopogon catenalis



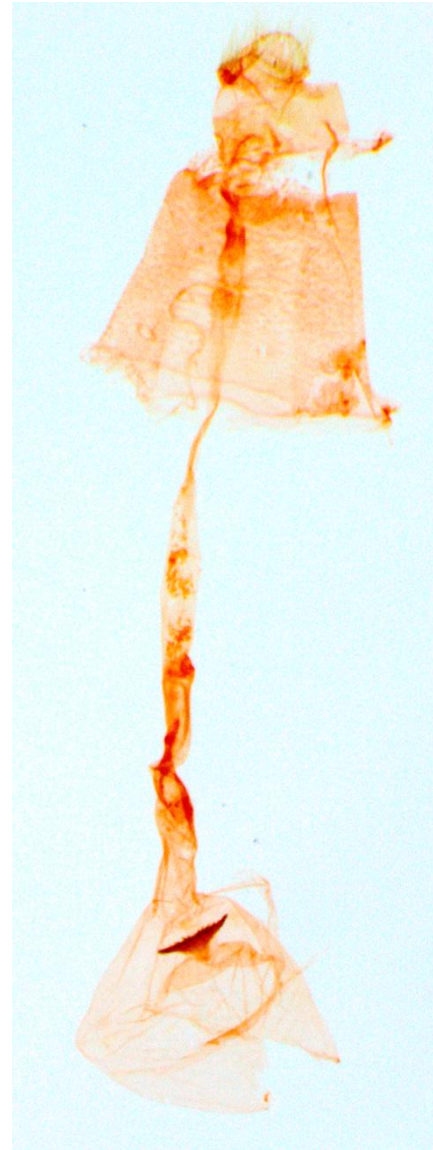
Massepha ohbai



Metoecca foedalis



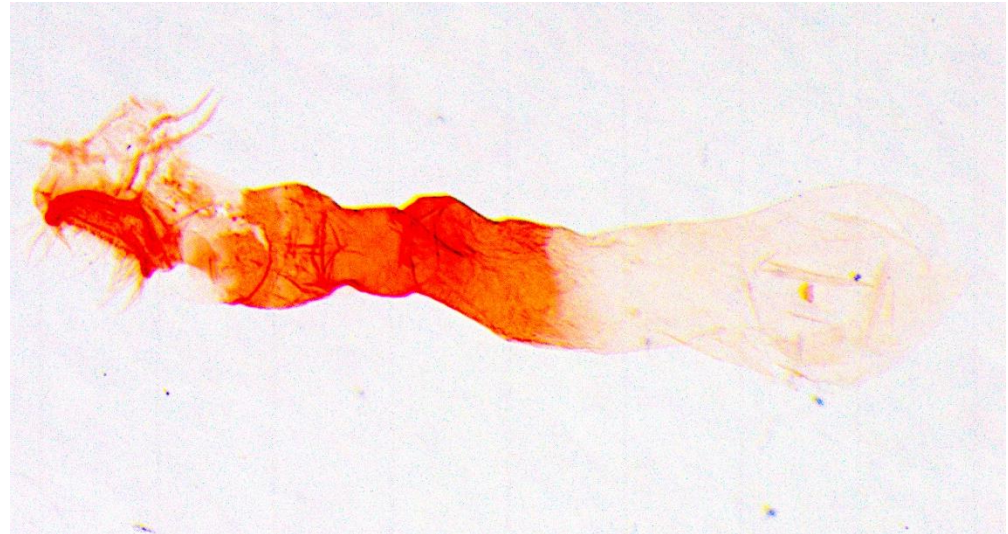
Protonoceras capitalis



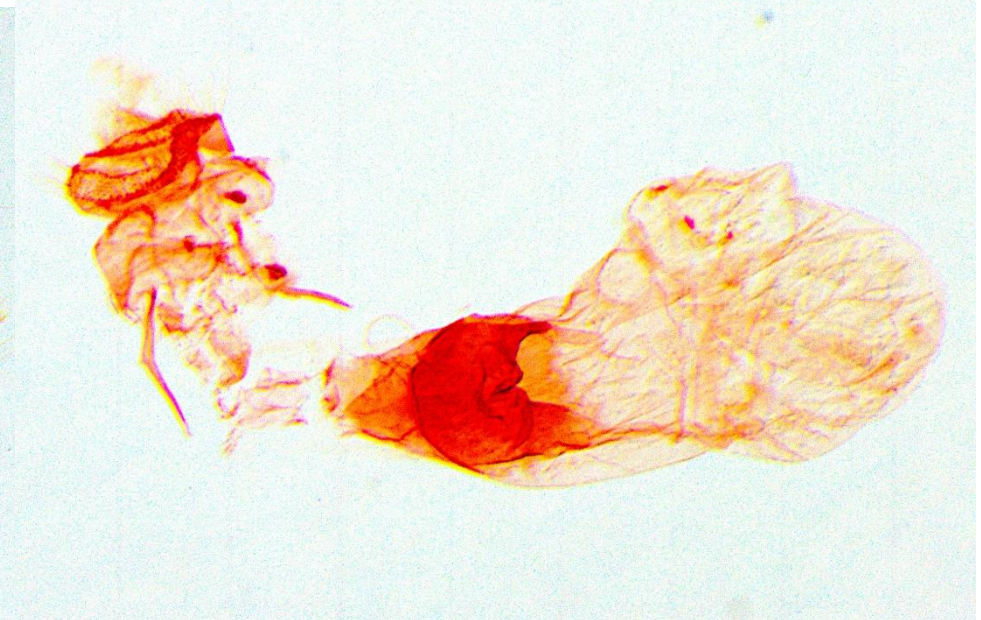
Metasia coniotalis



Nacoleia satsumalis



Nacoleia tampiusalis



Mabra charonialis



Camptomastix hisbonalis



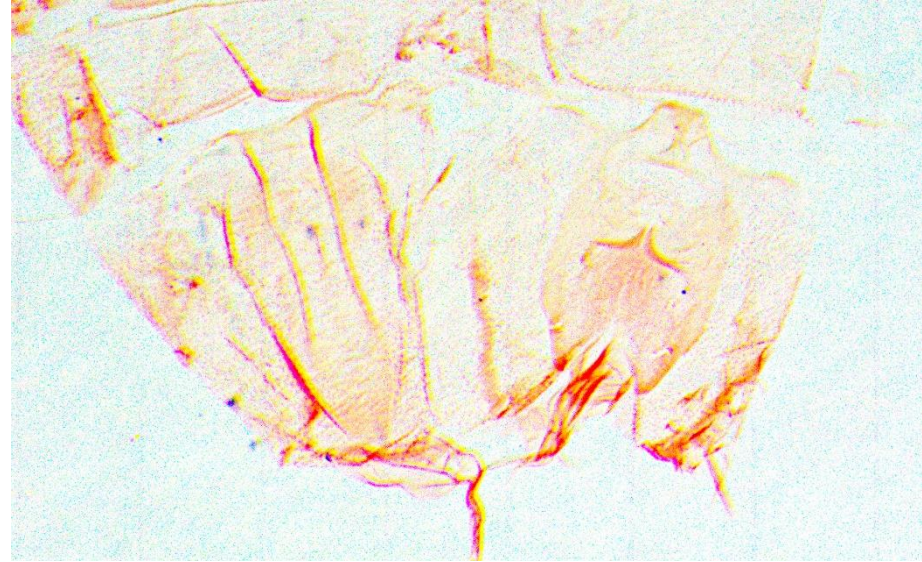
Nacoleia commixta



Male abdominal segment 8



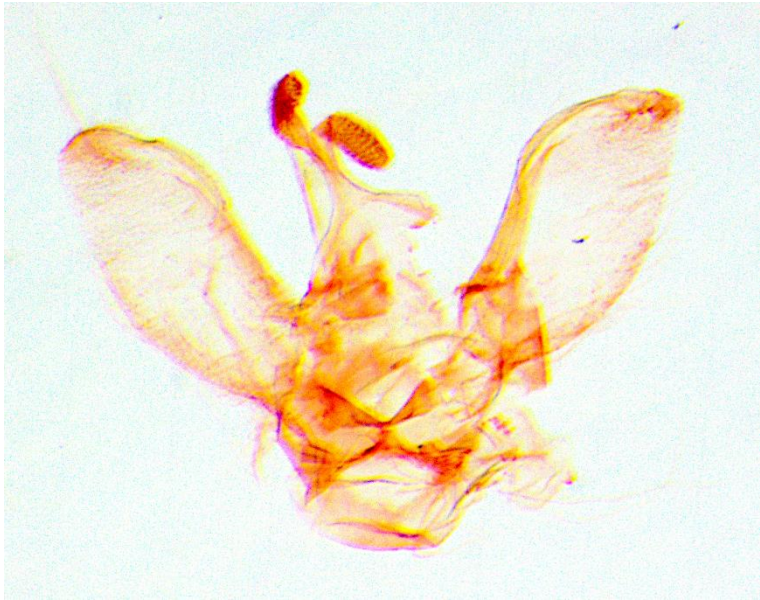
Glycythyma chrysorycta



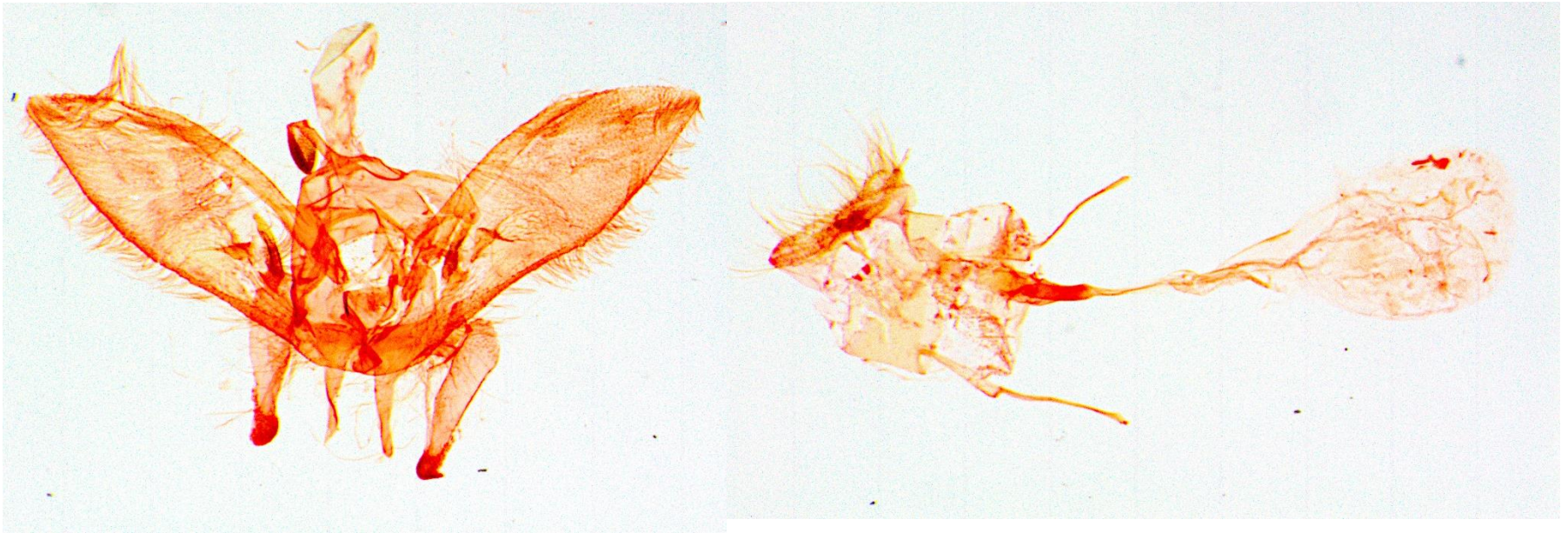
Male abdominal segment 8



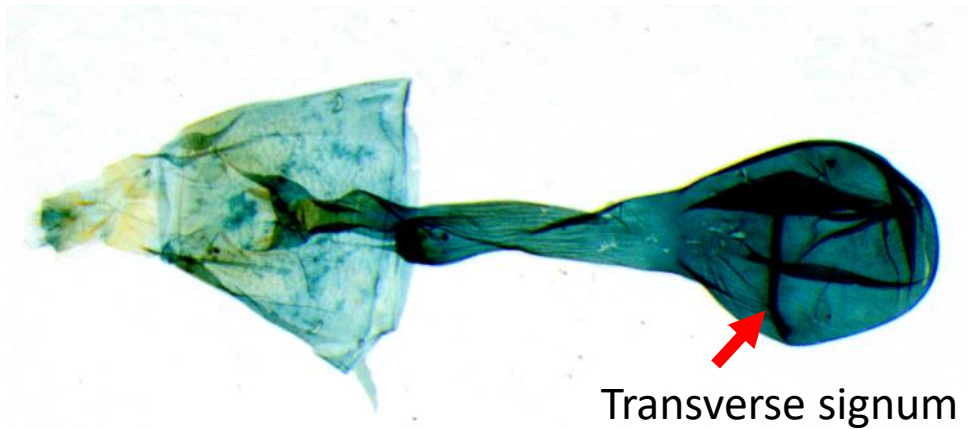
Piletocera aegimiusalis



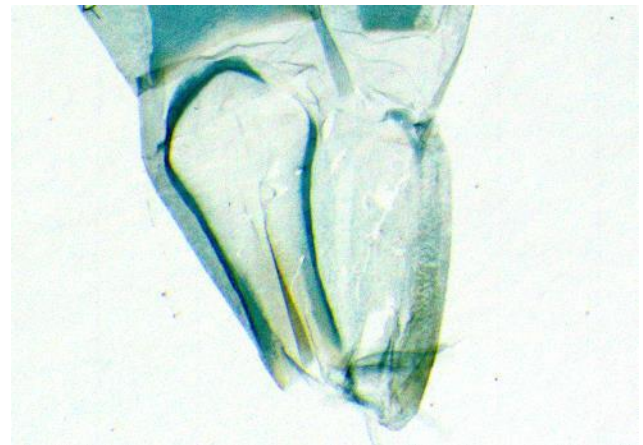
Nacoleia charesalis



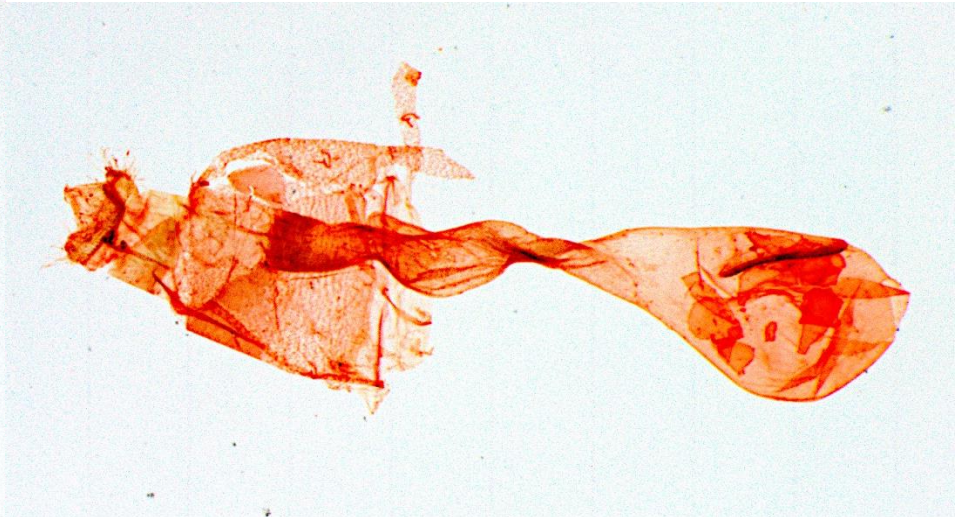
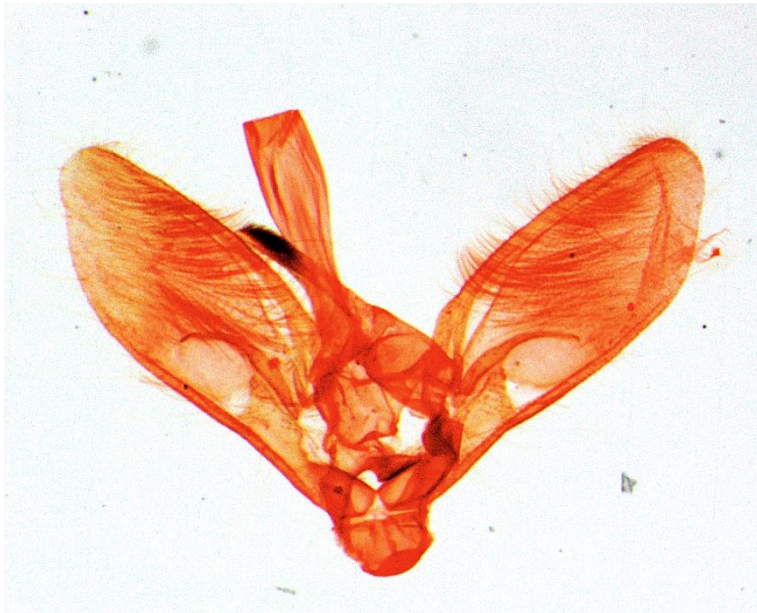
Hemopsis nr. *dissipatalis*



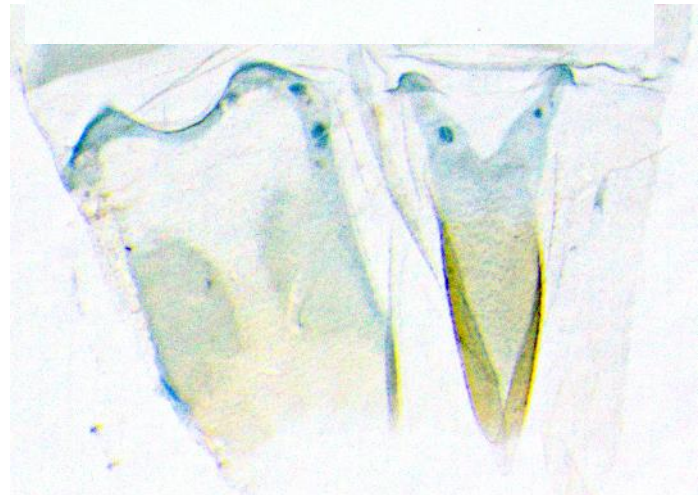
Transverse signum



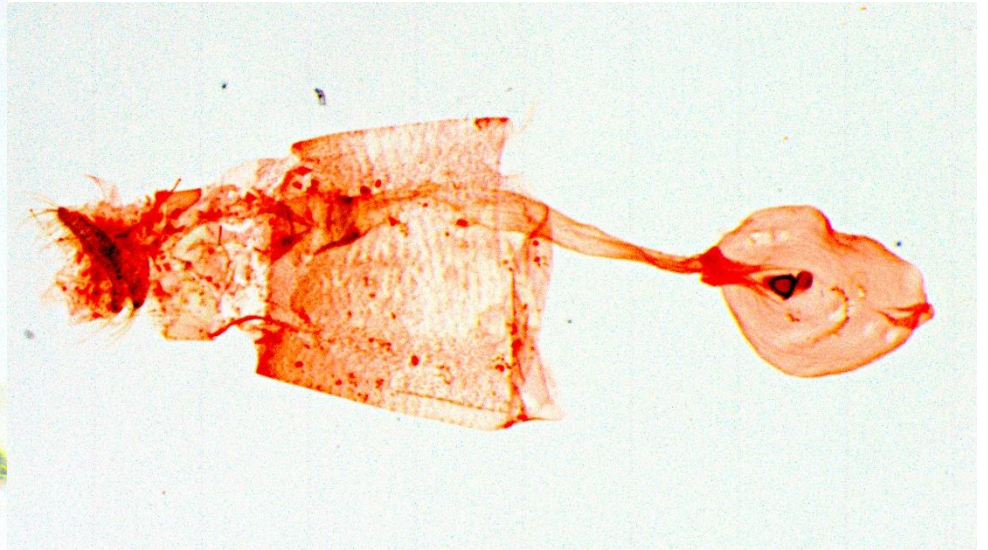
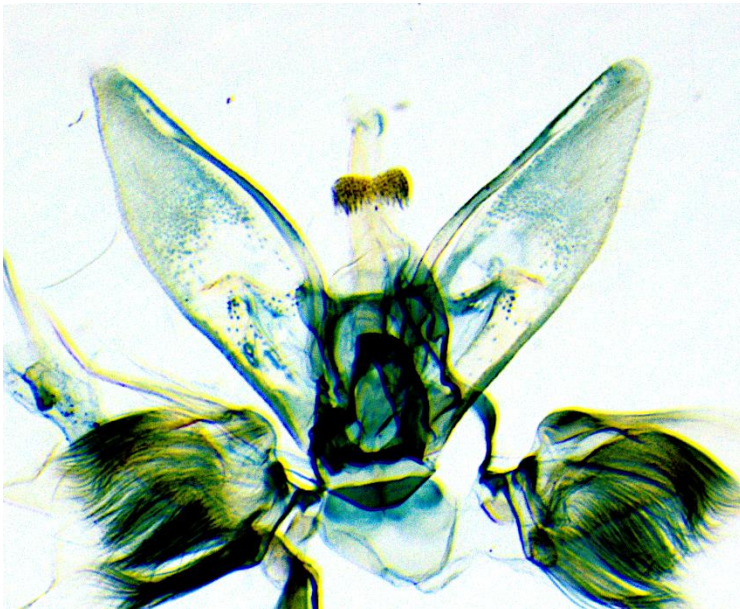
Mecyna tricolor



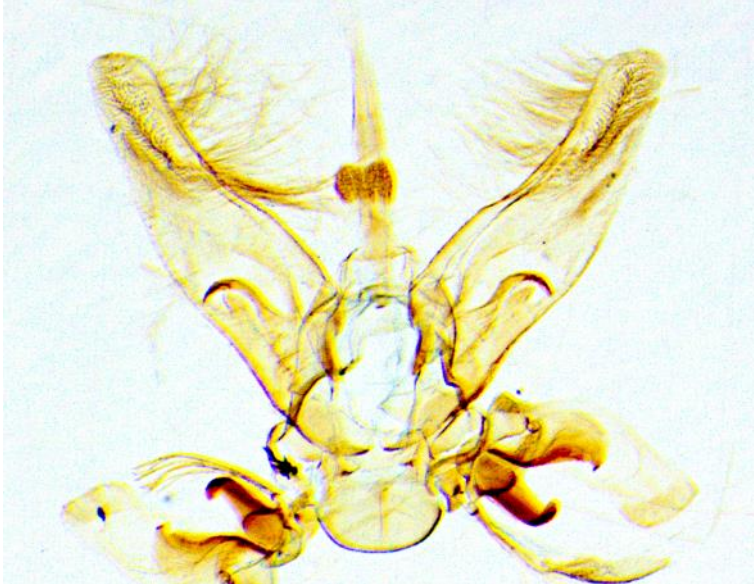
Syllepte invalidalis



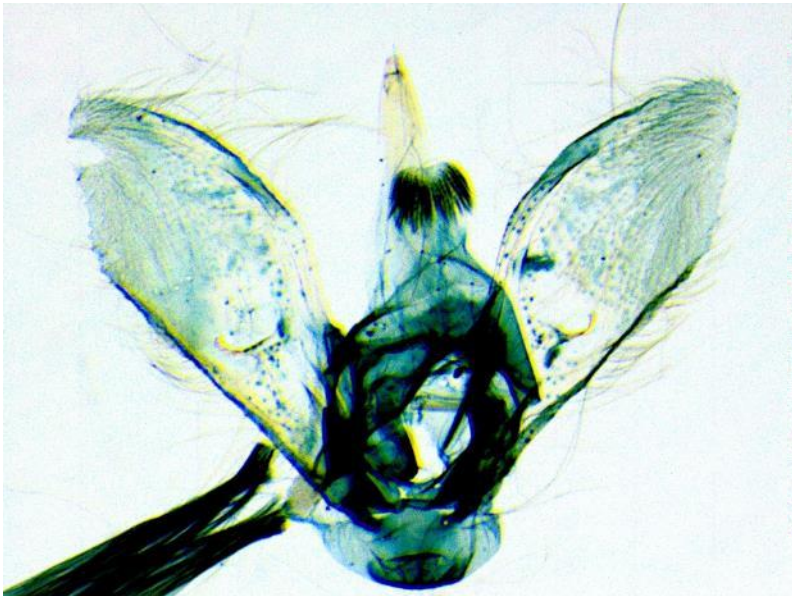
Syllepte signalis



Syllepte fuscoinvalidalis



Syllepte pallidinotalis



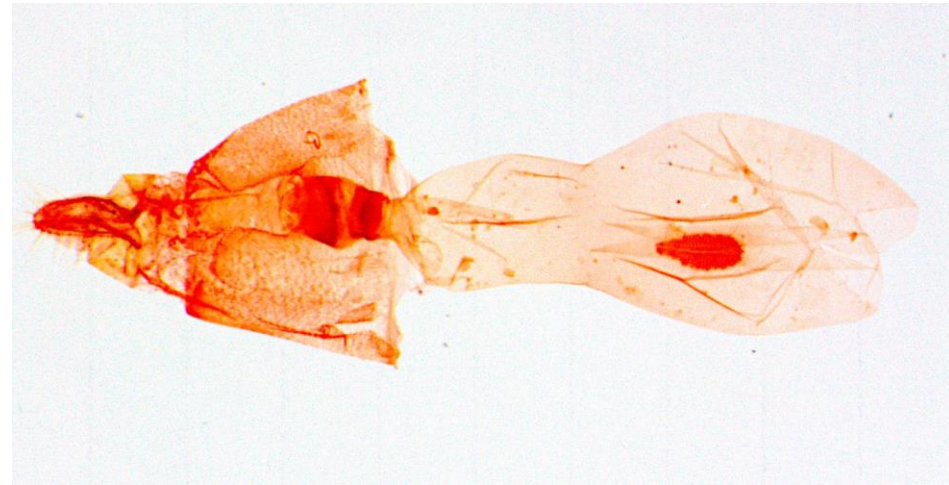
Herpetogramma luctuosalis



Goniorhynchus butyrosa



Goniorhynchus exemplaris



Lipararchis tranquillalis

