

# **The limits of mtDNA analysis for determining the provenance of invasive species: a midwife toad example**

Chris Vliegenthart<sup>1,2,\*</sup>, Maurits van de Vrede<sup>1,2,\*</sup>, Ingrid den Boer<sup>3</sup>, Maarten J. Gilbert<sup>4,5</sup>,  
Pim Lemmers<sup>6,7</sup>, James France<sup>1,2</sup>, Manon C. de Visser<sup>1,2</sup>, Richard P.J.H. Struijk<sup>4</sup>, Ben  
Wielstra<sup>1,2,\*\*</sup>

1 - Naturalis Biodiversity Center, P.O. Box 9517, 2300 RA Leiden, The Netherlands

2 - Institute of Biology Leiden, Leiden University, P.O. Box 9505, 2300 RA Leiden,  
The Netherlands

3- Independent Researcher, The Netherlands

4 - Reptile, Amphibian and Fish Conservation Netherlands (RAVON), P.O. Box 1413,  
6501 BK Nijmegen, The Netherlands

5 - Department Biomolecular Health Sciences – Infectious Diseases and Immunology,  
Faculty of Veterinary Medicine, Utrecht University, P.O. Box 80.165, 3508 TD Utrecht,  
The Netherlands

6 - Natuurbalans – Limes Divergens, Toernooiveld 1, 6525 ED Nijmegen, The  
Netherlands

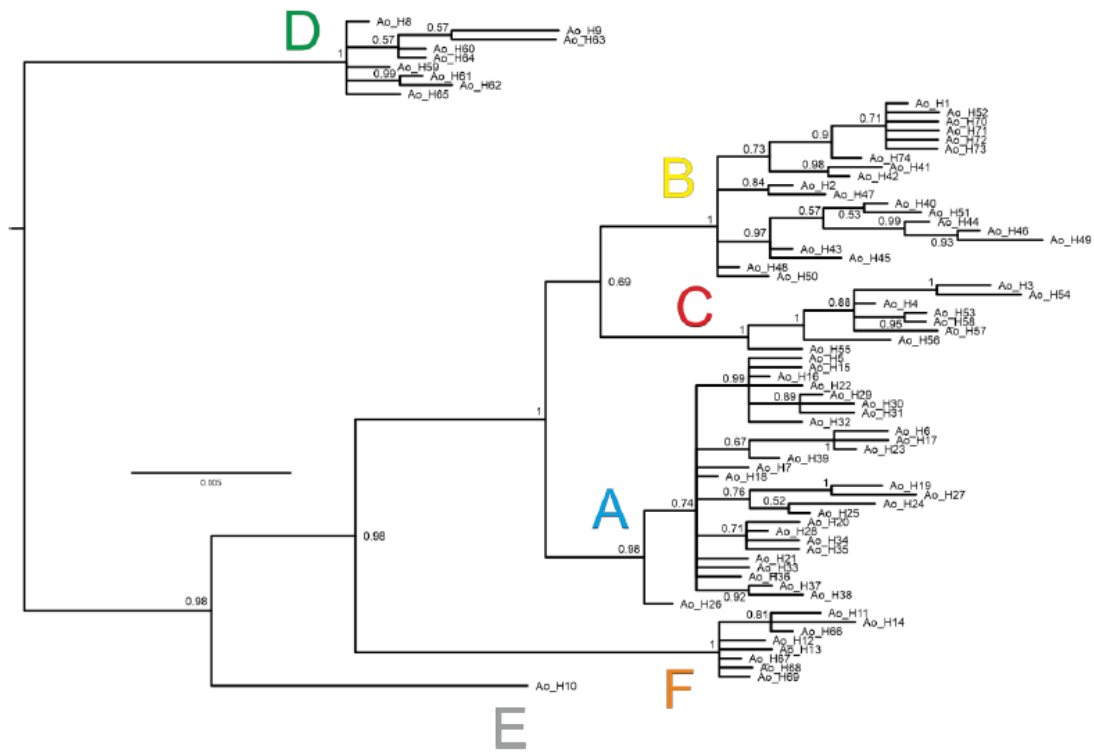
7 - Netherlands Centre of Expertise for Exotic Species (NEC-E), Nature plaza, P.O. Box  
9010, 6500 GL Nijmegen, The Netherlands

\* These authors contributed equally to this work.

\*\*Corresponding author: [ben.wielstra@naturalis.nl](mailto:ben.wielstra@naturalis.nl)

ORCID iD: Wielstra: 0000-0002-7112-5965

## **Supplementary material**



**Figure S1.** The 50% majority-rule consensus tree from the Bayesian phylogenetic analysis of 74 ND4 mtDNA haplotypes of the common midwife toad (*Alytes obstetricans*). The outgroup is not shown. The letters denote six major mtDNA clades referred to as haplogroups by Gonçalves et al. (2015). Haplotype details can be found in supplementary table S1.