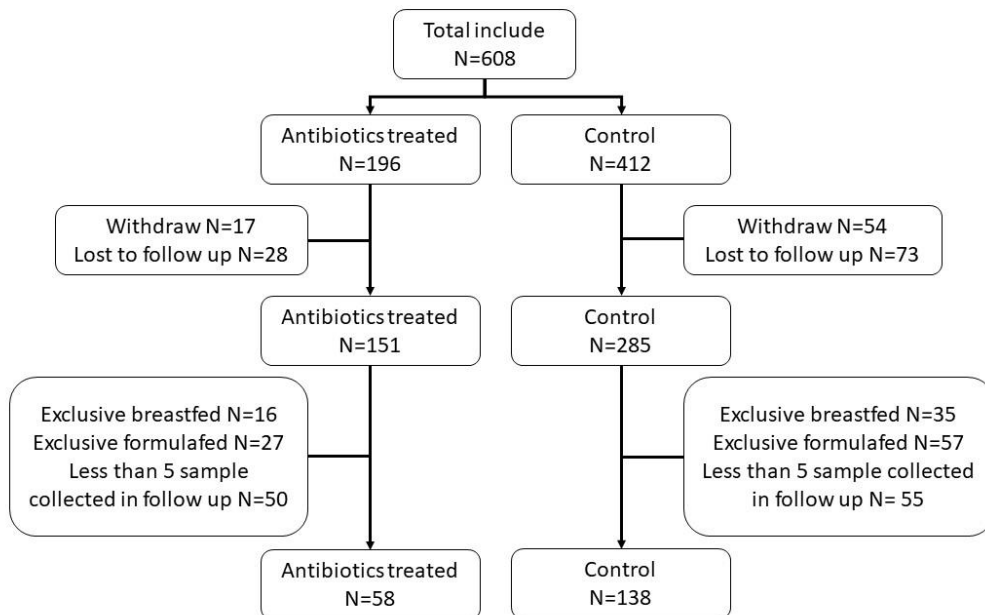
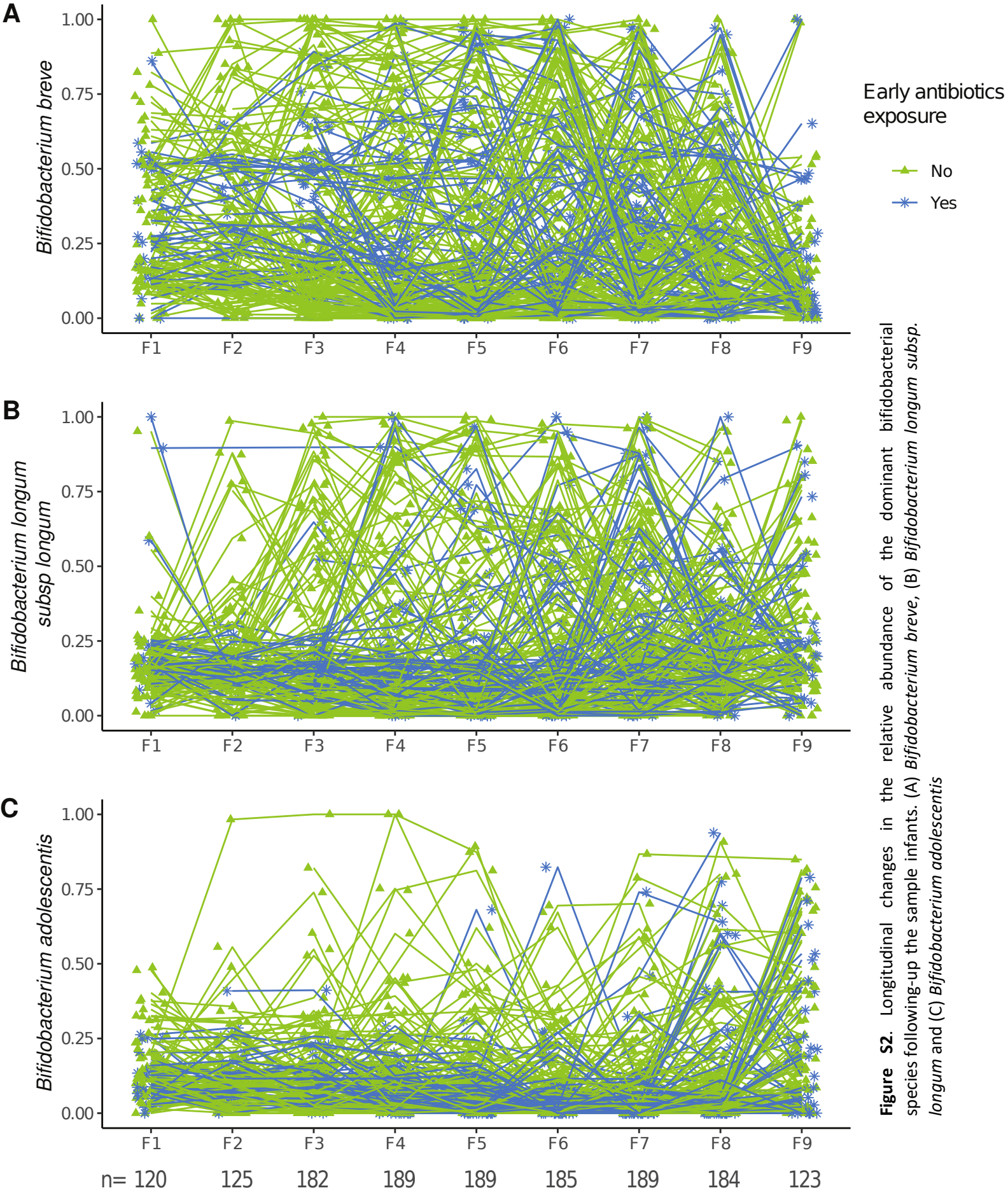


## Longitudinal changes in bifidobacterial population during the first two years of life

*R. An, F. Fontana, E. Van Daele, M. Ventura, A. Vlieger, R.M. van Elburg, J. Knol, C. Milani and C. Belzer*

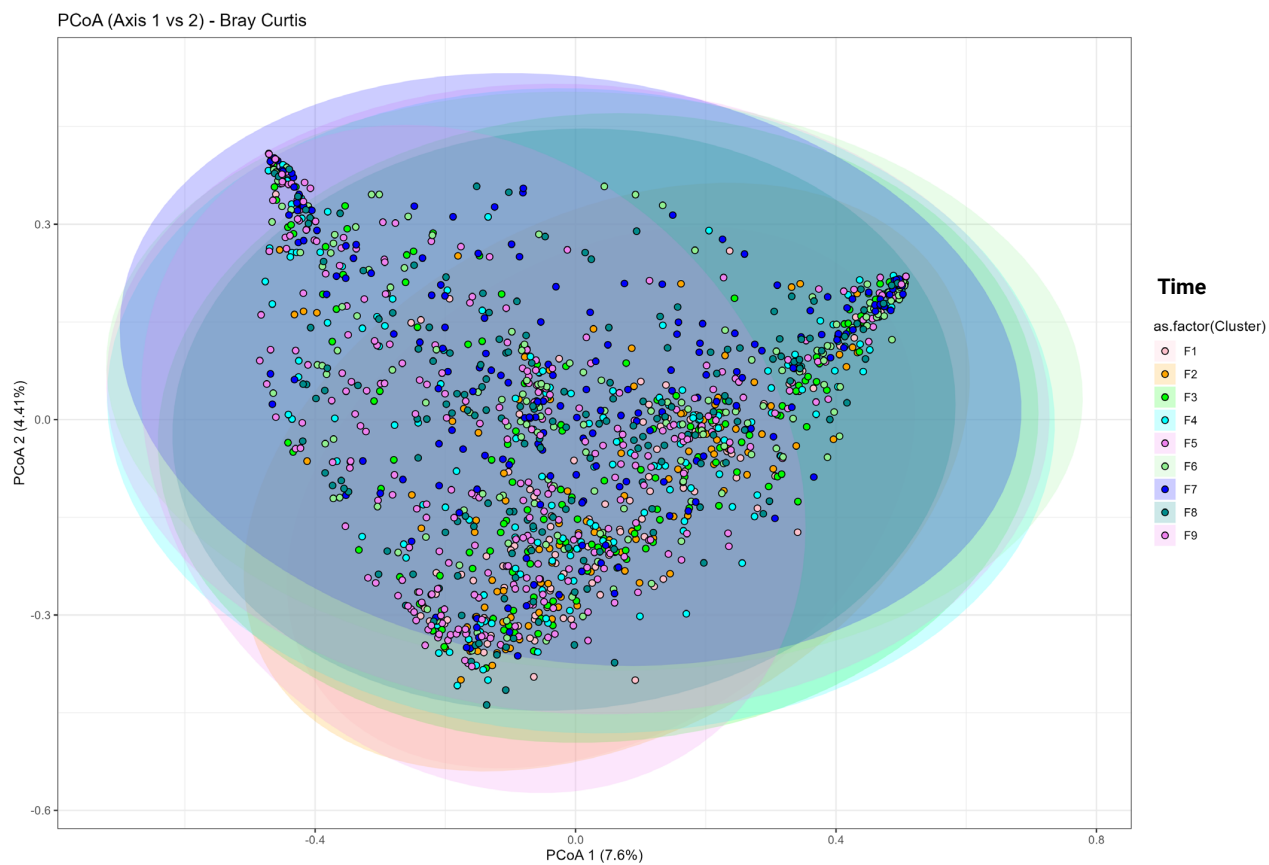
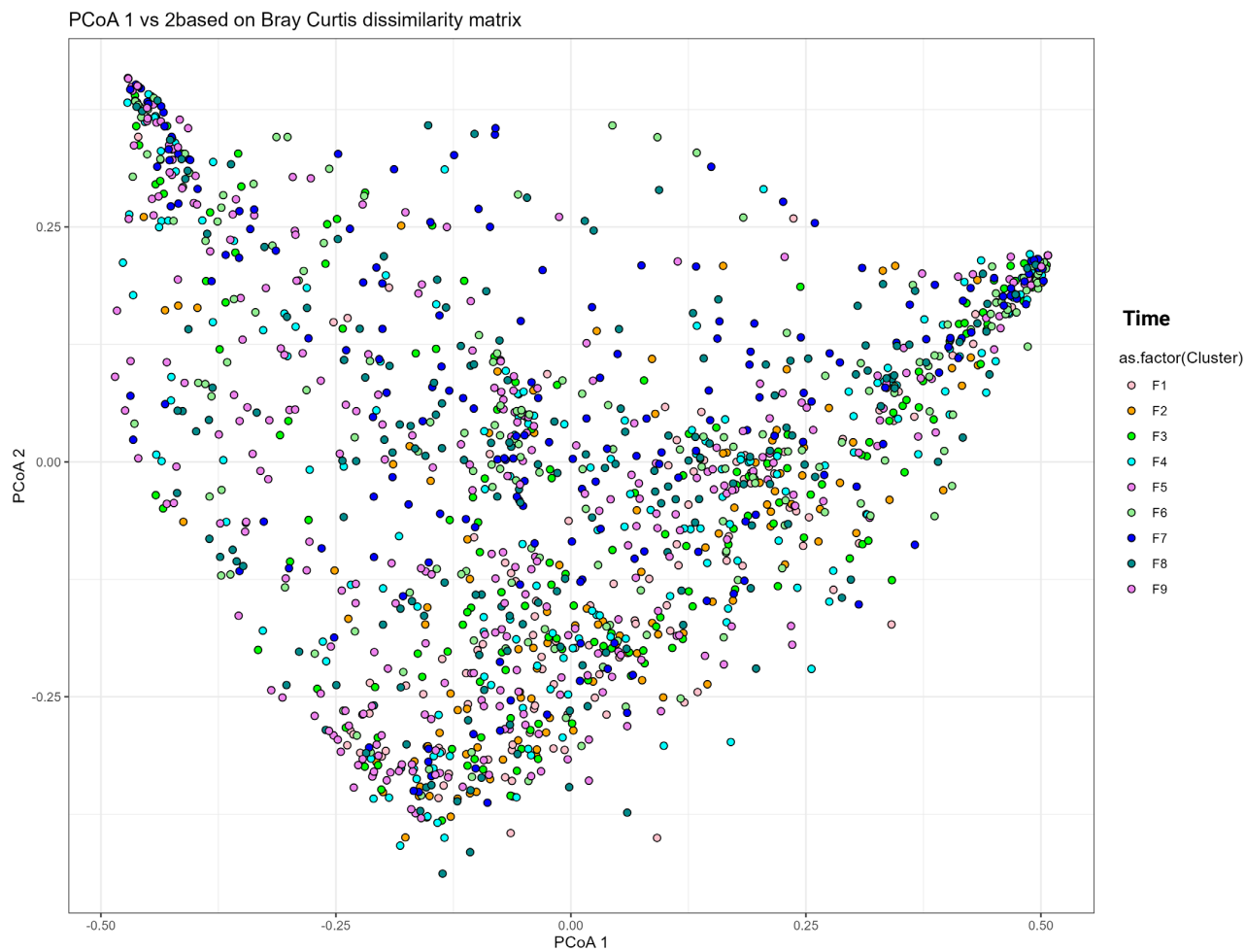


**Figure S1.** Flow diagram.

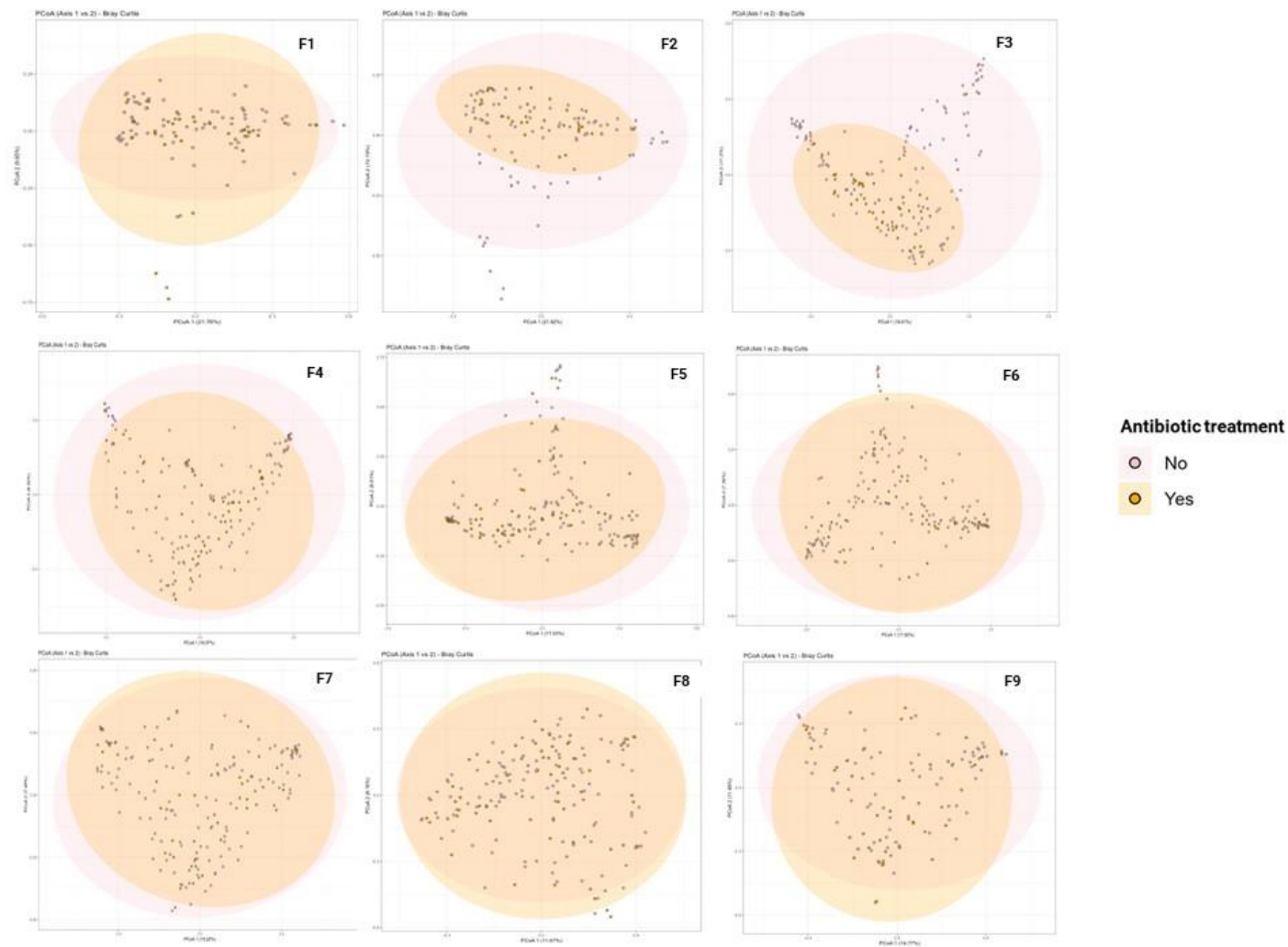


**Time**

**Time**



**Figure S3** Principal coordinate analysis of included infants over they sampling timepoints. F1-F9 refers to samples collected from infants at different timepoints, i.e. around 1 day, 2 days, 1 week, 2 weeks, 1 month, 2 months, 6 months, 1 year and 2 years after birth.



**Figure S4.** Principal coordinate analysis subdivided infants for antibiotic(s) treatment during the first two years of life. F1-F9 refers to samples collected from infants at different timepoints, i.e. around 1 day, 2 days, 1 week, 2 weeks, 1 month, 2 months, 6 months, 1 year and 2 years after birth.