

Electrophysiological Indices of Audiovisual Speech Perception: Beyond the McGurk Effect and Speech in Noise

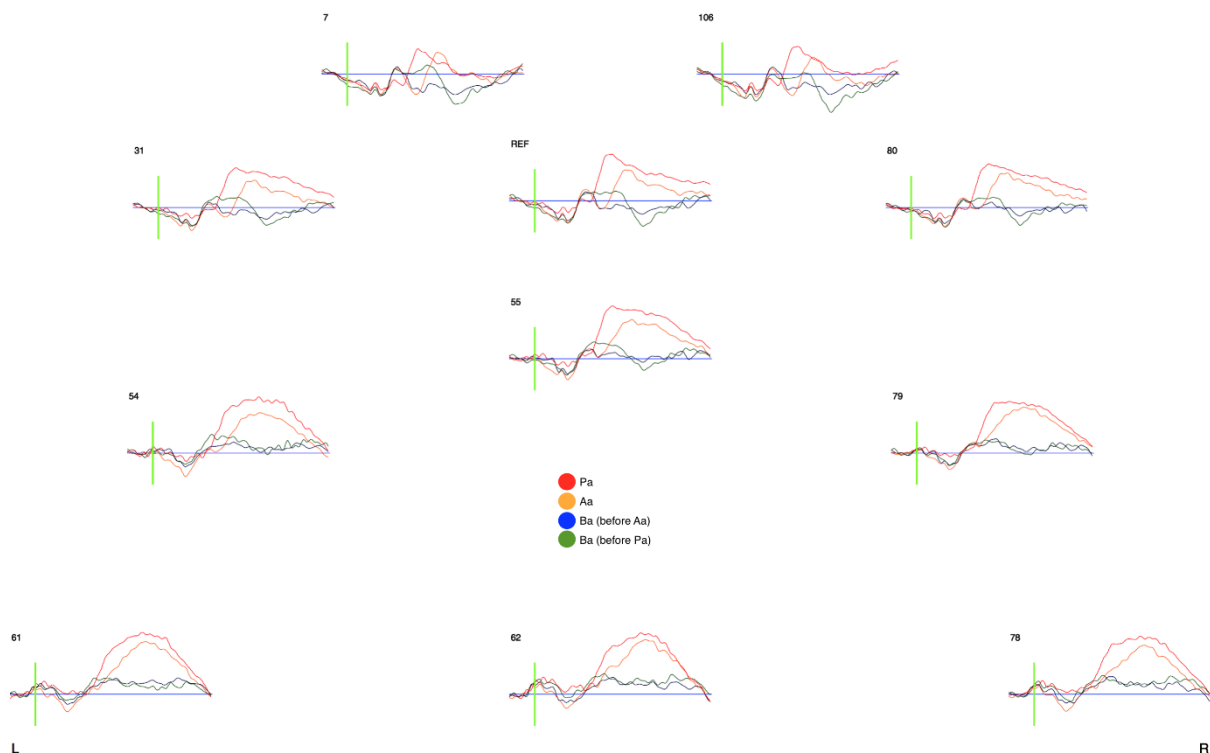
**Julia Irwin^{1,3}, Trey Avery¹, Lawrence Brancazio^{1,3}, Jacqueline Turcios^{1,3},
Kayleigh Ryherd^{1,2} and Nicole Landi^{1,2}**

¹ Haskins Laboratories, New Haven, CT, USA

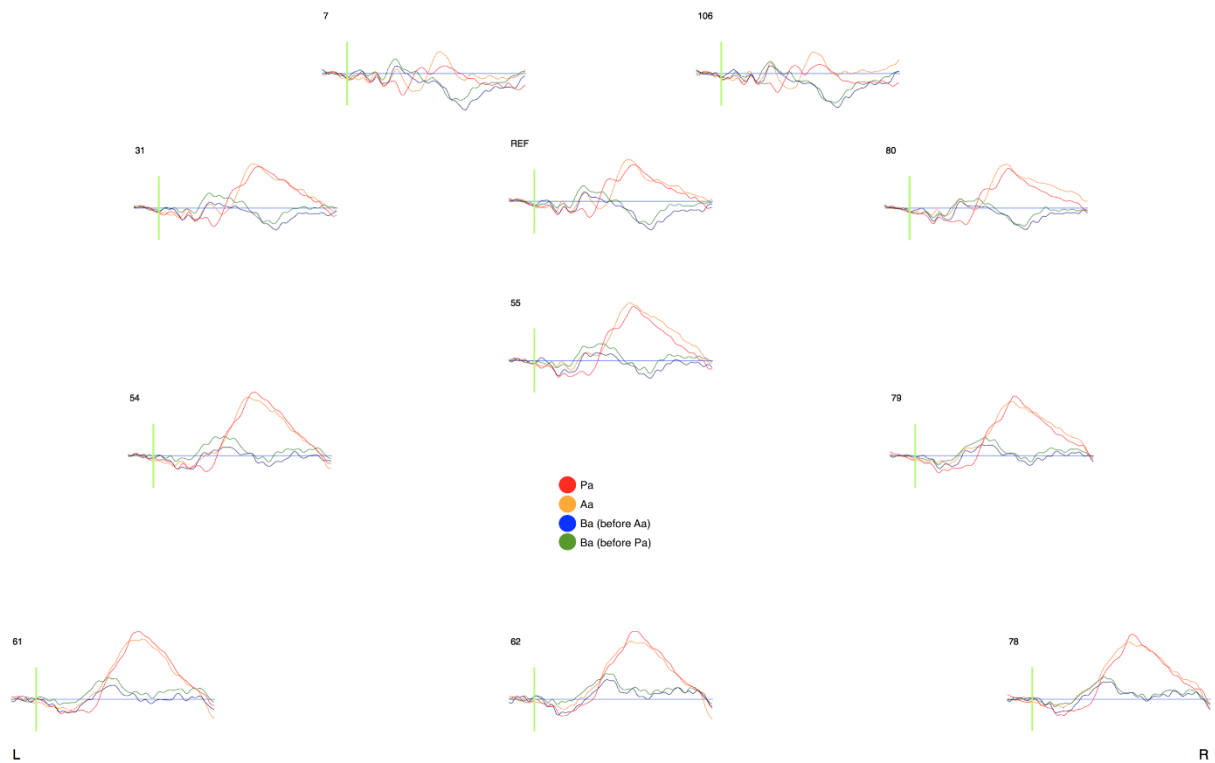
² University of Connecticut, Storrs, CT, USA

³ Southern Connecticut State University New Haven, CT, USA

Supplementary Figures



Supplementary Figure 1. Waveforms for individual channels in the averaged montage represented in Fig. 3 (center panels) for the AV condition. The ERP response for each speech sound is represented by a different color, indicated in the embedded legend.



Supplementary Figure 2. Waveforms for individual channels in the averaged montage represented in Fig. 3 (right panels) for the PX condition. The ERP response for each speech sound is represented by a different color, indicated in the embedded legend.